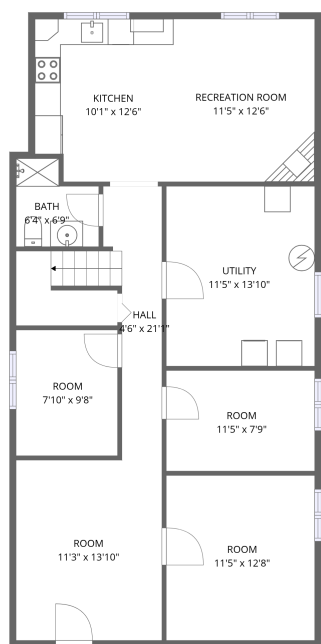
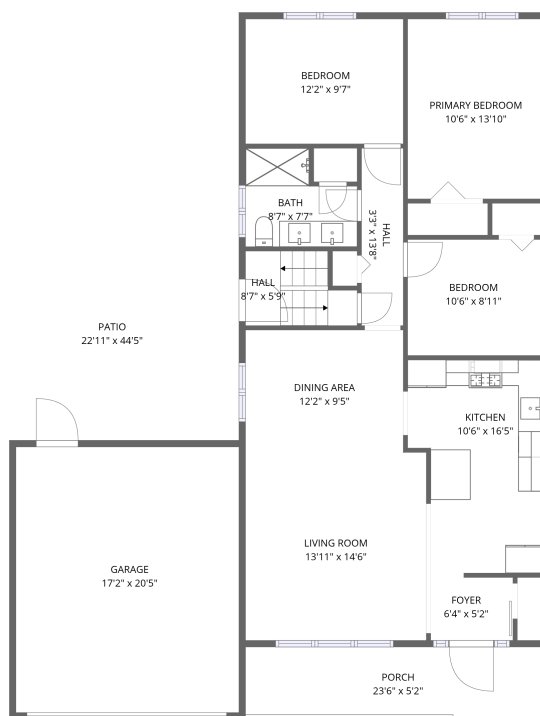


Home data report

30 Briarbluff Ave, Scarborough, ON, CA



Basement



1st floor

Total Area: 2372 sq. ft

Basement: 924 sq. ft, 1st Floor: 1448 sq. ft

Excluded: Utility 158 sq. ft, Porch 122 sq. ft, Patio 627 sq. ft, Walls: 173 sq. ft

Property summary

 **2** Floors

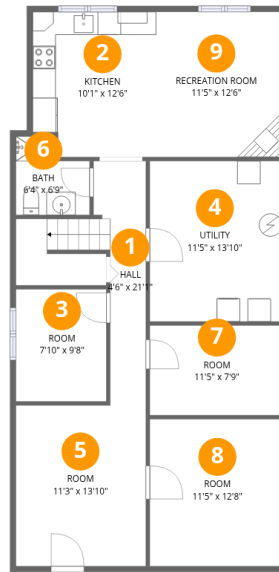
 **3** Bedrooms

 **2** Bathrooms

 **1** Garages

Home data report

30 Briarbluff Ave, Scarborough, ON, CA



Room dimensions

Floor 1 Below grade

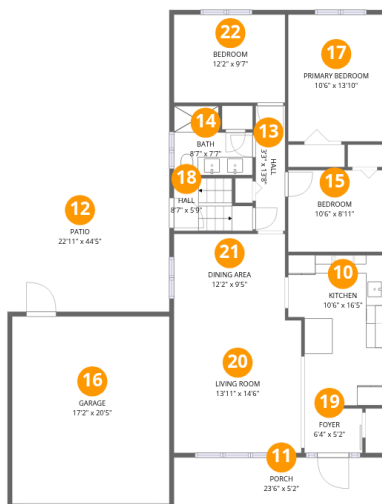
Total: 924 sqft

Excluded: 158 sqft

#		Dimensions	sqft	Counted as living area
1	Hall	4'6" x 21'1"	102 sq. ft	Yes
2	Kitchen	10'1" x 12'6"	122 sq. ft	Yes
3	Room	7'10" x 9'8"	75 sq. ft	Yes
4	Utility	11'5" x 13'10"	158 sq. ft	No
5	Room	11'3" x 13'10"	156 sq. ft	Yes
6	Bath	6'4" x 6'9"	37 sq. ft	Yes
7	Room	11'5" x 7'9"	88 sq. ft	Yes
8	Room	11'5" x 12'8"	145 sq. ft	Yes
9	Recreation Room	11'5" x 12'6"	143 sq. ft	Yes

Home data report

30 Briarbluff Ave, Scarborough, ON, CA



Room dimensions

Floor 2

Total: 1448sqft Excluded: 749sqft

#		Dimensions	sqft	Counted as living area
10	Kitchen	10'6" x 16'5"	155 sq. ft	Yes
11	Porch	23'6" x 5'2"	122 sq. ft	No
12	Patio	22'11" x 44'5"	627 sq. ft	No
13	Hall	3'3" x 13'8"	44 sq. ft	Yes
14	Bath	8'7" x 7'7"	54 sq. ft	Yes
15	Bedroom	10'6" x 8'11"	93 sq. ft	Yes
16	Garage	17'2" x 20'5"	350 sq. ft	Yes
17	Primary Bedroom	10'6" x 13'10"	145 sq. ft	Yes
18	Hall	8'7" x 5'9"	43 sq. ft	Yes
19	Foyer	6'4" x 5'2"	32 sq. ft	Yes
20	Living Room	13'11" x 14'6"	201 sq. ft	Yes

Home data report

30 Briarbluff Ave, Scarborough, ON, CA

#		Dimensions	sqft	Counted as living area
21	Dining Area	12'2" x 9'5"	114 sq. ft	Yes
22	Bedroom	12'2" x 9'7"	117 sq. ft	Yes

1 Floor 1 - Hall



Dimensions: 4'6" x 21'1"
Area: 102 sq. ft
Counted as living area: Yes

Heated: Yes
Finished: Yes
Enclosed: Yes
Contiguous: Yes
Permitted: Yes
Wet space: No
Addition: No
Conversion: No

2 Floor 1 - Kitchen



Dimensions: 10'1" x 12'6"
Area: 122 sq. ft
Counted as living area: Yes

Heated: Yes
Finished: Yes
Enclosed: Yes
Contiguous: Yes
Permitted: Yes
Wet space: No
Addition: No
Conversion: No

3 Floor 1 - Room



Dimensions: 7'10" x 9'8"
Area: 75 sq. ft
Counted as living area: Yes

Heated: Yes
Finished: Yes
Enclosed: Yes
Contiguous: Yes
Permitted: Yes
Wet space: No
Addition: No
Conversion: No

4 Floor 1 - Utility



Dimensions: 11'5" x 13'10"
Area: 158 sq. ft
Counted as living area: No

Heated: Yes
Finished: No
Enclosed: Yes
Contiguous: Yes
Permitted: Yes
Wet space: No
Addition: No
Conversion: No

5 Floor 1 - Room



Dimensions: 11'3" x 13'10"
Area: 156 sq. ft
Counted as living area: Yes

Heated: Yes
Finished: Yes
Enclosed: Yes
Contiguous: Yes
Permitted: Yes
Wet space: No
Addition: No
Conversion: No

6 Floor 1 - Bath



Dimensions: 6'4" x 6'9"
Area: 37 sq. ft
Counted as living area: Yes

Heated: Yes
Finished: Yes
Enclosed: Yes
Contiguous: Yes
Permitted: Yes
Wet space: Yes
Addition: No
Conversion: No

7 Floor 1 - Room



Dimensions: 11'5" x 7'9"
Area: 88 sq. ft
Counted as living area: Yes

Heated: Yes
Finished: Yes
Enclosed: Yes
Contiguous: Yes
Permitted: Yes
Wet space: No
Addition: No
Conversion: No

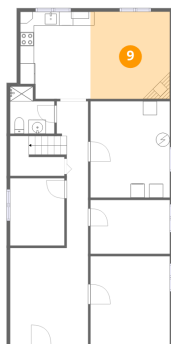
8 Floor 1 - Room



Dimensions: 11'5" x 12'8"
Area: 145 sq. ft
Counted as living area: Yes

Heated: Yes
Finished: Yes
Enclosed: Yes
Contiguous: Yes
Permitted: Yes
Wet space: No
Addition: No
Conversion: No

9 Floor 1 - Recreation Room



Dimensions: 11'5" x 12'6"
Area: 143 sq. ft
Counted as living area: Yes

Heated: Yes
Finished: Yes
Enclosed: Yes
Contiguous: Yes
Permitted: Yes
Wet space: No
Addition: No
Conversion: No

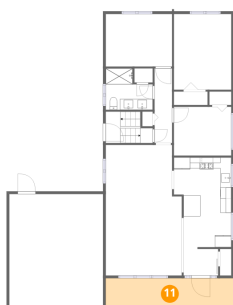
10 Floor 2 - Kitchen



Dimensions: 10'6" x 16'5"
Area: 155 sq. ft
Counted as living area: Yes

Heated: Yes
Finished: Yes
Enclosed: Yes
Contiguous: Yes
Permitted: Yes
Wet space: No
Addition: No
Conversion: No

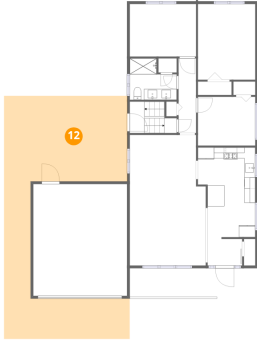
11 Floor 2 - Porch



Dimensions: 23'6" x 5'2"
Area: 122 sq. ft
Counted as living area: No

Heated: No
Finished: No
Enclosed: No
Contiguous: Yes
Permitted: Yes
Wet space: No
Addition: No
Conversion: No

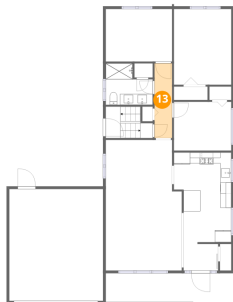
12 Floor 2 - Patio



Dimensions: 22'11" x 44'5"
Area: 627 sq. ft
Counted as living area: No

Heated: No
Finished: No
Enclosed: No
Contiguous: Yes
Permitted: Yes
Wet space: No
Addition: No
Conversion: No

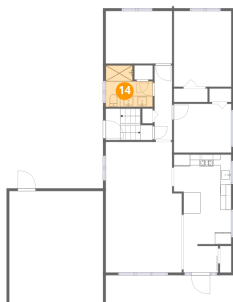
13 Floor 2 - Hall



Dimensions: 3'3" x 13'8"
Area: 44 sq. ft
Counted as living area: Yes

Heated: Yes
Finished: Yes
Enclosed: Yes
Contiguous: Yes
Permitted: Yes
Wet space: No
Addition: No
Conversion: No

14 Floor 2 - Bath



Dimensions: 8'7" x 7'7"
Area: 54 sq. ft
Counted as living area: Yes

Heated: Yes
Finished: Yes
Enclosed: Yes
Contiguous: Yes
Permitted: Yes
Wet space: Yes
Addition: No
Conversion: No

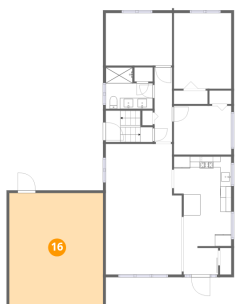
15 Floor 2 - Bedroom



Dimensions: 10'6" x 8'11"
Area: 93 sq. ft
Counted as living area: Yes

Heated: Yes
Finished: Yes
Enclosed: Yes
Contiguous: Yes
Permitted: Yes
Wet space: No
Addition: No
Conversion: No

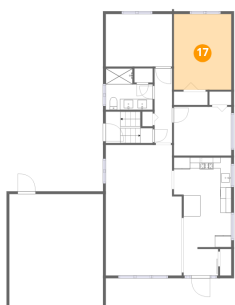
16 Floor 2 - Garage



Dimensions: 17'2" x 20'5"
Area: 350 sq. ft
Counted as living area: No

Heated: No
Finished: Yes
Enclosed: Yes
Contiguous: Yes
Permitted: Yes
Wet space: No
Addition: No
Conversion: No

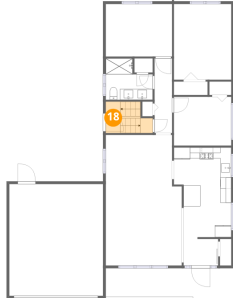
17 Floor 2 - Primary Bedroom



Dimensions: 10'6" x 13'10"
Area: 145 sq. ft
Counted as living area: Yes

Heated: Yes
Finished: Yes
Enclosed: Yes
Contiguous: Yes
Permitted: Yes
Wet space: No
Addition: No
Conversion: No

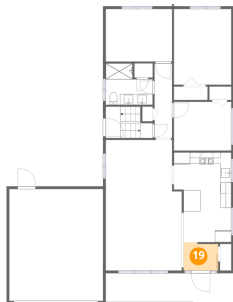
18 Floor 2 - Hall



Dimensions: 8'7" x 5'9"
Area: 43 sq. ft
Counted as living area: Yes

Heated: Yes
Finished: Yes
Enclosed: Yes
Contiguous: Yes
Permitted: Yes
Wet space: No
Addition: No
Conversion: No

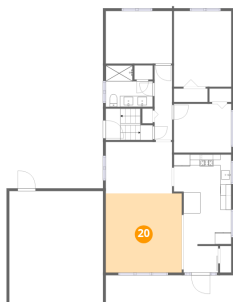
19 Floor 2 - Foyer



Dimensions: 6'4" x 5'2"
Area: 32 sq. ft
Counted as living area: Yes

Heated: Yes
Finished: Yes
Enclosed: Yes
Contiguous: Yes
Permitted: Yes
Wet space: No
Addition: No
Conversion: No

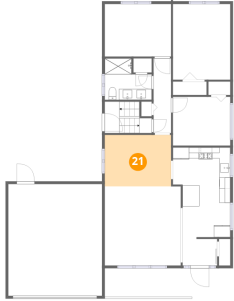
20 Floor 2 - Living Room



Dimensions: 13'11" x 14'6"
Area: 201 sq. ft
Counted as living area: Yes

Heated: Yes
Finished: Yes
Enclosed: Yes
Contiguous: Yes
Permitted: Yes
Wet space: No
Addition: No
Conversion: No

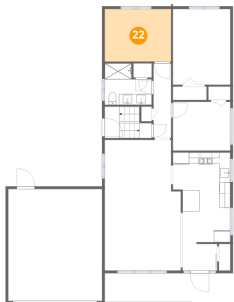
21 Floor 2 - Dining Area



Dimensions: 12'2" x 9'5"
Area: 114 sq. ft
Counted as living area: Yes

Heated: Yes
Finished: Yes
Enclosed: Yes
Contiguous: Yes
Permitted: Yes
Wet space: No
Addition: No
Conversion: No

22 Floor 2 - Bedroom



Dimensions: 12'2" x 9'7"
Area: 117 sq. ft
Counted as living area: Yes

Heated: Yes
Finished: Yes
Enclosed: Yes
Contiguous: Yes
Permitted: Yes
Wet space: No
Addition: No
Conversion: No