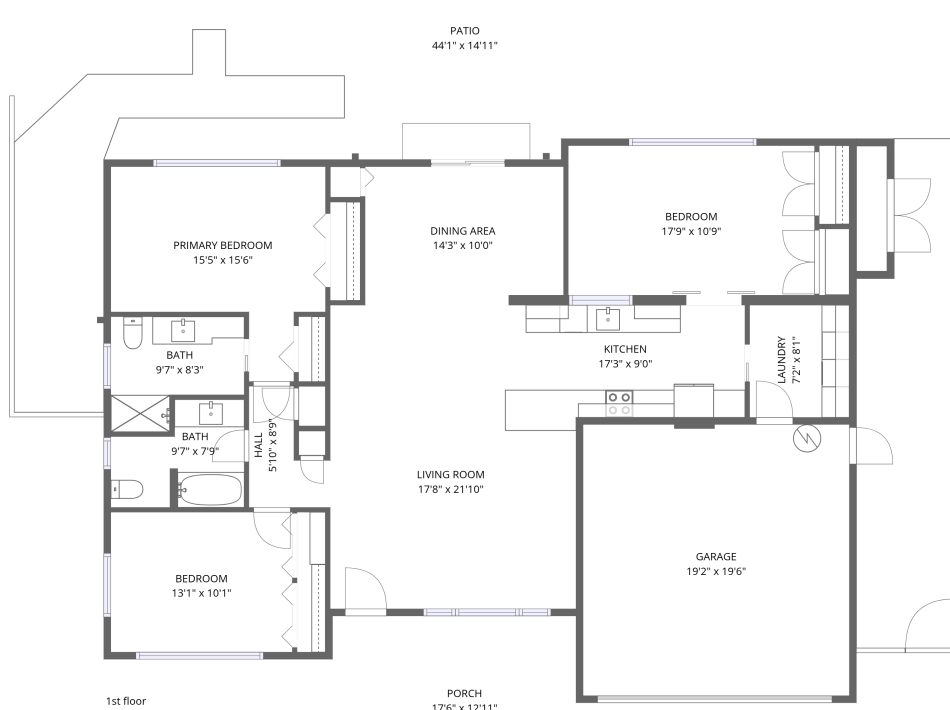


## Home data report

**1405 Embassy Drive, Imperial Park, Clearwater, Pinellas County, Florida, United States, 33764**



**Total Area: 1520 sq. ft**

1st Floor: 1520 sq. ft

Excluded: Garage 374 sq. ft, Porch 200 sq. ft, Patio 462 sq. ft, Walls: 121 sq. ft

## Property summary

 **1** Floors

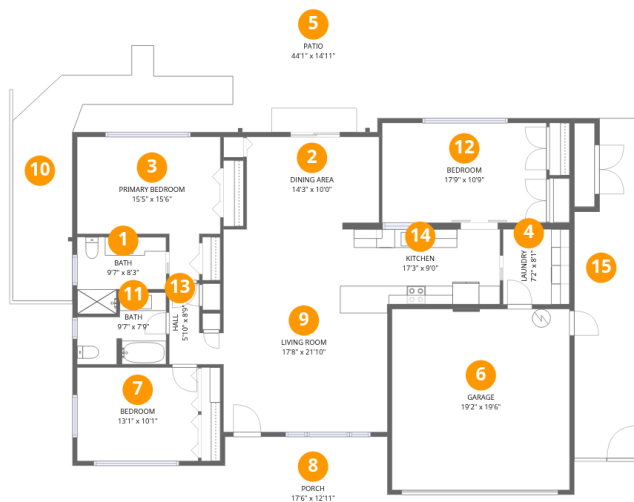
 **3** Bedrooms

 **2** Bathrooms

 **1** Garages

Home data report

1405 Embassy Drive, Imperial Park, Clearwater, Pinellas County, Florida, United States, 33764



## Room dimensions

Floor 1

Total:1520sqft

Excluded: 1036sqft

#		Dimensions	sqft	Counted as living area
1	Bath	9'7" x 8'3"	79 sq. ft	Yes
2	Dining Area	14'3" x 10'0"	142 sq. ft	Yes
3	Primary Bedroom	15'5" x 15'6"	239 sq. ft	Yes
4	Laundry	7'2" x 8'1"	58 sq. ft	Yes
5	Patio	44'1" x 14'11"	657 sq. ft	No
6	Garage	19'2" x 19'6"	374 sq. ft	No
7	Bedroom	13'1" x 10'1"	132 sq. ft	Yes
8	Porch	17'6" x 12'11"	226 sq. ft	No
9	Living Room	17'8" x 21'10"	387 sq. ft	Yes
10	Walking Path	21'5" x 24'4"	521 sq. ft	No
11	Bath	9'7" x 7'9"	75 sq. ft	Yes

Home data report

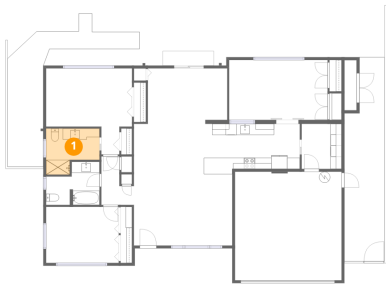
**1405 Embassy Drive, Imperial Park, Clearwater, Pinellas County,  
Florida, United States, 33764**

#		Dimensions	sqft	Counted as living area
12	Bedroom	17'9" x 10'9"	191 sq. ft	Yes
13	Hall	5'10" x 8'9"	51 sq. ft	Yes
14	Kitchen	17'3" x 9'0"	156 sq. ft	Yes
15	Walking Path	7'3" x 36'8"	265 sq. ft	No

1405 Embassy Drive, Imperial Park, Clearwater, Pinellas County,  
Florida, United States, 33764

**1** Floor 1 - Bath

---

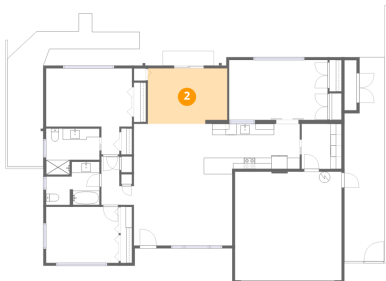


Dimensions: 9'7" x 8'3"  
Area: 79 sq. ft  
Counted as living area: Yes

Heated: Yes  
Finished: Yes  
Enclosed: Yes  
Contiguous: Yes  
Permitted: Yes  
Wet space: Yes  
Addition: No  
Conversion: No

**2** Floor 1 - Dining Area

---

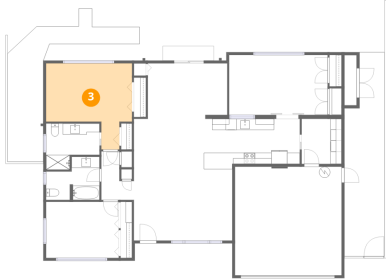


Dimensions: 14'3" x 10'0"  
Area: 142 sq. ft  
Counted as living area: Yes

Heated: Yes  
Finished: Yes  
Enclosed: Yes  
Contiguous: Yes  
Permitted: Yes  
Wet space: No  
Addition: No  
Conversion: No

1405 Embassy Drive, Imperial Park, Clearwater, Pinellas County, Florida, United States, 33764

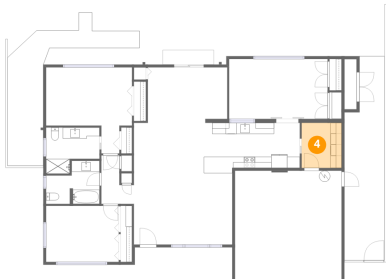
### 3 Floor 1 - Primary Bedroom



Dimensions: 15'5" x 15'6"  
Area: 239 sq. ft  
Counted as living area: Yes

Heated: Yes  
Finished: Yes  
Enclosed: Yes  
Contiguous: Yes  
Permitted: Yes  
Wet space: No  
Addition: No  
Conversion: No

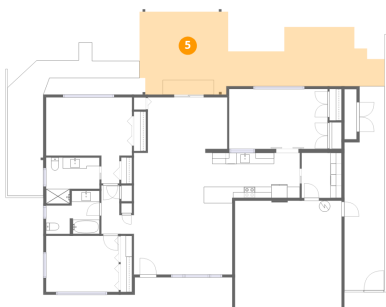
### 4 Floor 1 - Laundry



Dimensions: 7'2" x 8'1"  
Area: 58 sq. ft  
Counted as living area: Yes

Heated: Yes  
Finished: Yes  
Enclosed: Yes  
Contiguous: Yes  
Permitted: Yes  
Wet space: No  
Addition: No  
Conversion: No

### 5 Floor 1 - Patio

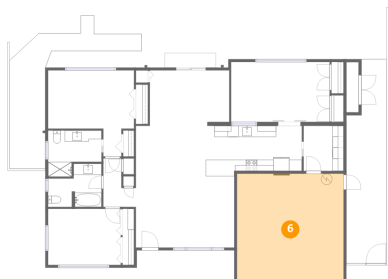


Dimensions: 44'1" x 14'11"  
Area: 657 sq. ft  
Counted as living area: No

Heated: No  
Finished: No  
Enclosed: No  
Contiguous: Yes  
Permitted: Yes  
Wet space: No  
Addition: No  
Conversion: No

1405 Embassy Drive, Imperial Park, Clearwater, Pinellas County, Florida, United States, 33764

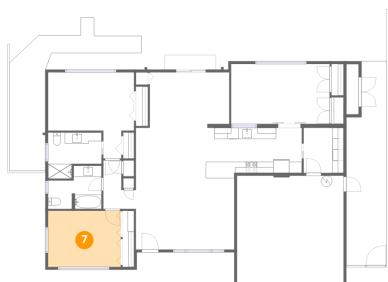
## 6 Floor 1 - Garage



Dimensions: 19'2" x 19'6"  
Area: 374 sq. ft  
Counted as living area: No

Heated: No  
Finished: No  
Enclosed: Yes  
Contiguous: Yes  
Permitted: Yes  
Wet space: No  
Addition: No  
Conversion: No

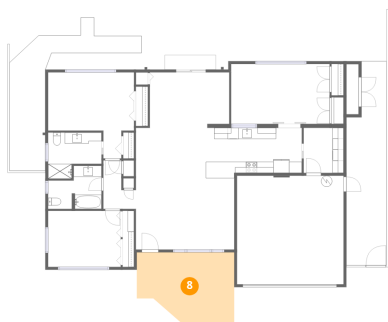
## 7 Floor 1 - Bedroom



Dimensions: 13'1" x 10'1"  
Area: 132 sq. ft  
Counted as living area: Yes

Heated: Yes  
Finished: Yes  
Enclosed: Yes  
Contiguous: Yes  
Permitted: Yes  
Wet space: No  
Addition: No  
Conversion: No

## 8 Floor 1 - Porch

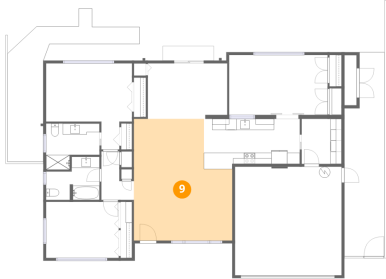


Dimensions: 17'6" x 12'11"  
Area: 226 sq. ft  
Counted as living area: No

Heated: No  
Finished: No  
Enclosed: No  
Contiguous: Yes  
Permitted: Yes  
Wet space: No  
Addition: No  
Conversion: No

1405 Embassy Drive, Imperial Park, Clearwater, Pinellas County, Florida, United States, 33764

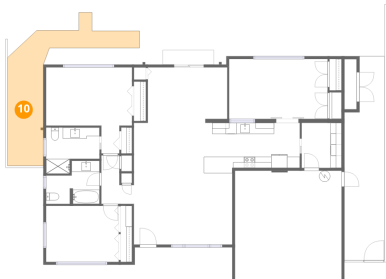
9 Floor 1 - Living Room



Dimensions: 17'8" x 21'10"  
Area: 387 sq. ft  
Counted as living area: Yes

Heated: Yes  
Finished: Yes  
Enclosed: Yes  
Contiguous: Yes  
Permitted: Yes  
Wet space: No  
Addition: No  
Conversion: No

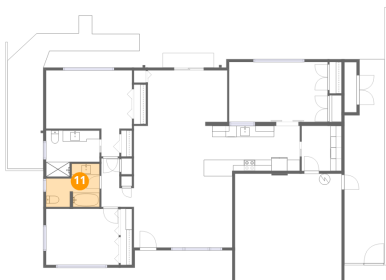
10 Floor 1 - Walking Path



Dimensions: 21'5" x 24'4"  
Area: 521 sq. ft  
Counted as living area: No

Heated: No  
Finished: No  
Enclosed: No  
Contiguous: Yes  
Permitted: No  
Wet space: No  
Addition: No  
Conversion: No

11 Floor 1 - Bath

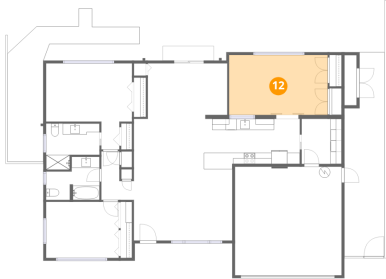


Dimensions: 9'7" x 7'9"  
Area: 75 sq. ft  
Counted as living area: Yes

Heated: Yes  
Finished: Yes  
Enclosed: Yes  
Contiguous: Yes  
Permitted: Yes  
Wet space: Yes  
Addition: No  
Conversion: No

1405 Embassy Drive, Imperial Park, Clearwater, Pinellas County, Florida, United States, 33764

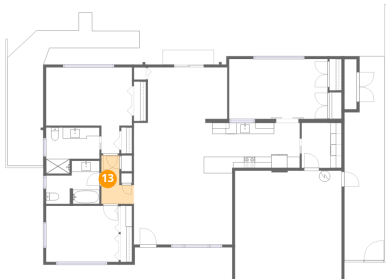
### 12 Floor 1 - Bedroom



Dimensions: 17'9" x 10'9"  
Area: 191 sq. ft  
Counted as living area: Yes

Heated: Yes  
Finished: Yes  
Enclosed: Yes  
Contiguous: Yes  
Permitted: Yes  
Wet space: No  
Addition: No  
Conversion: No

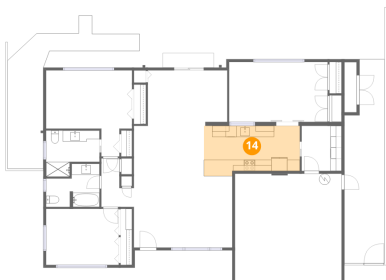
### 13 Floor 1 - Hall



Dimensions: 5'10" x 8'9"  
Area: 51 sq. ft  
Counted as living area: Yes

Heated: Yes  
Finished: Yes  
Enclosed: Yes  
Contiguous: Yes  
Permitted: Yes  
Wet space: No  
Addition: No  
Conversion: No

### 14 Floor 1 - Kitchen



Dimensions: 17'3" x 9'0"  
Area: 156 sq. ft  
Counted as living area: Yes

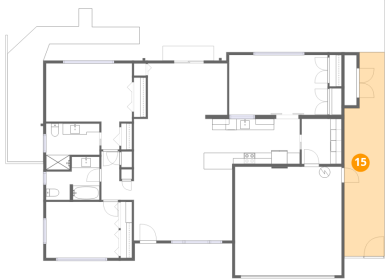
Heated: Yes  
Finished: Yes  
Enclosed: Yes  
Contiguous: Yes  
Permitted: Yes  
Wet space: No  
Addition: No  
Conversion: No



1405 Embassy Drive, Imperial Park, Clearwater, Pinellas County,  
Florida, United States, 33764

**15** Floor 1 - Walking Path

---



Dimensions: 7'3" x 36'8"  
Area: 265 sq. ft  
Counted as living area: No

Heated: No  
Finished: No  
Enclosed: No  
Contiguous: Yes  
Permitted: No  
Wet space: No  
Addition: No  
Conversion: No