

Home data report

339 Lynn rd,Rostraver,PA,US



Total Area: 2924 sq. ft

Basement 1: 601 sq. ft, 1st Floor: 1255 sq. ft, 2nd Floor: 1068 sq. ft

Excluded: Patio 149 sq. ft, Basement 652 sq. ft, Porch 17 sq. ft, Deck 270 sq. ft, Garage 645 sq. ft, Low ceiling 62 sq. ft, Attic 200 sq. ft, Open to below 91 sq. ft, Walls: 291 sq. ft

Property summary

 **3** Floors

 **4** Bedrooms

 **3** Bathrooms

Home data report

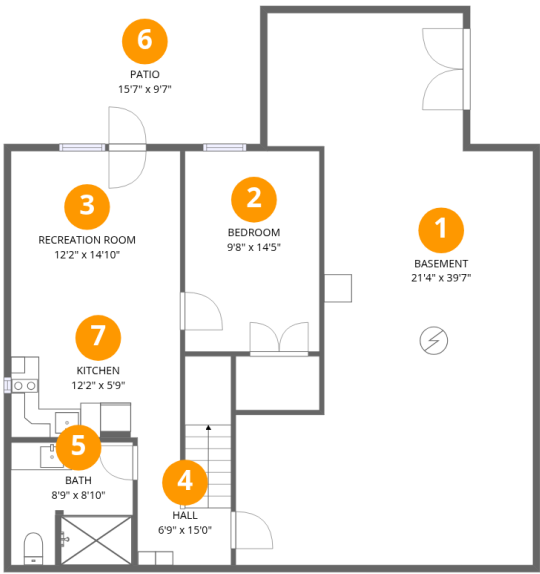
339 Lynn rd,Rostraver,PA,US

 **1**
Half baths

 **1**
Garages

Home data report

339 Lynn rd,Rostraver,PA,US



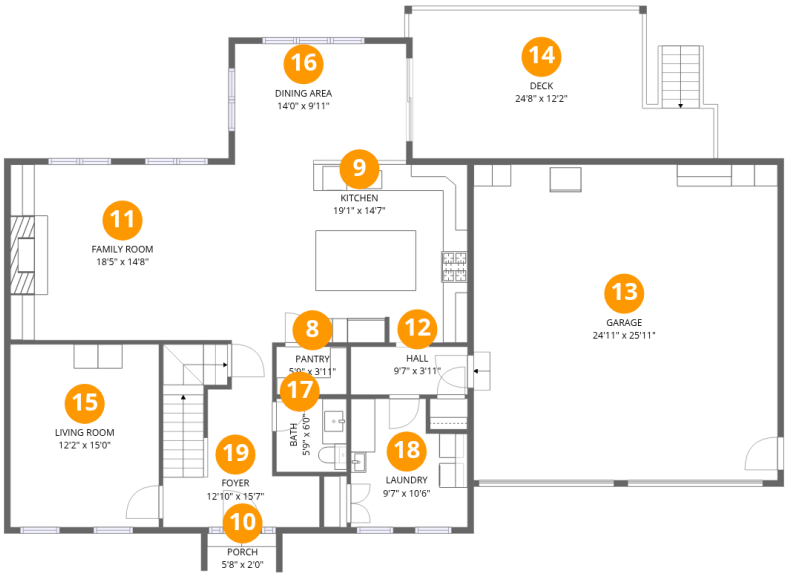
Room dimensions

Floor 1 Below grade Total:601sqft Excluded: 801sqft

#		Dimensions	sqft	Counted as living area
1	Basement	21'4" x 39'7"	846 sq. ft	No
2	Bedroom	9'8" x 14'5"	139 sq. ft	Yes
3	Recreation Room	12'2" x 14'10"	180 sq. ft	Yes
4	Hall	6'9" x 15'0"	101 sq. ft	Yes
5	Bath	8'9" x 8'10"	77 sq. ft	Yes
6	Patio	15'7" x 9'7"	149 sq. ft	No
7	Kitchen	12'2" x 5'9"	70 sq. ft	Yes

Home data report

339 Lynn rd,Rostraver,PA,US



Room dimensions

Floor 2 Total:1255sqft Excluded: 932sqft

#		Dimensions	sqft	Counted as living area
8	Pantry	5'9" x 3'11"	23 sq. ft	Yes
9	Kitchen	19'1" x 14'7"	279 sq. ft	Yes
10	Porch	5'8" x 2'0"	11 sq. ft	No
11	Family Room	18'5" x 14'8"	269 sq. ft	Yes
12	Hall	9'7" x 3'11"	38 sq. ft	Yes
13	Garage	24'11" x 25'11"	645 sq. ft	No
14	Deck	24'8" x 12'2"	300 sq. ft	No
15	Living Room	12'2" x 15'0"	183 sq. ft	Yes
16	Dining Area	14'0" x 9'11"	139 sq. ft	Yes
17	Bath	5'9" x 6'0"	35 sq. ft	Yes
18	Laundry	9'7" x 10'6"	101 sq. ft	Yes

Home data report

339 Lynn rd,Rostraver,PA,US

#		Dimensions	sqft	Counted as living area
19	Foyer	12'10" x 15'7"	201 sq. ft	Yes

Home data report

339 Lynn rd,Rostraver,PA,US

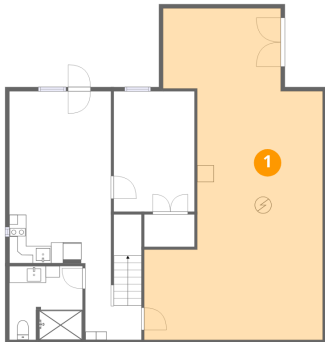


Room dimensions

Floor 3 Total:1068sqft Excluded: 353sqft

#		Dimensions	sqft	Counted as living area
20	Bedroom	12'4" x 12'5"	153 sq. ft	Yes
21	Attic	25'1" x 11'1"	277 sq. ft	No
22	Primary Bedroom	15'8" x 17'4"	271 sq. ft	Yes
23	Primary Bath	12'0" x 12'1"	144 sq. ft	Yes
24	Bath	3'0" x 4'5"	13 sq. ft	Yes
25	Open To Below	12'10" x 11'3"	145 sq. ft	No
26	Hall	12'7" x 6'5"	81 sq. ft	Yes
27	W.I.C.	6'9" x 12'1"	81 sq. ft	Yes
28	Bedroom	12'2" x 15'0"	183 sq. ft	Yes
29	Bath	6'2" x 11'4"	70 sq. ft	Yes

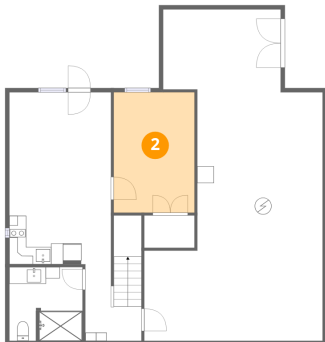
1 Floor 1 - Basement



Dimensions: 21'4" x 39'7"
Area: 846 sq. ft
Counted as living area: No

Heated: Yes
Finished: No
Enclosed: Yes
Contiguous: Yes
Permitted: Yes
Wet space: No
Addition: No
Conversion: No

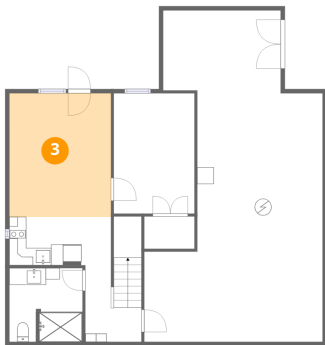
2 Floor 1 - Bedroom



Dimensions: 9'8" x 14'5"
Area: 139 sq. ft
Counted as living area: Yes

Heated: Yes
Finished: Yes
Enclosed: Yes
Contiguous: Yes
Permitted: Yes
Wet space: No
Addition: No
Conversion: No

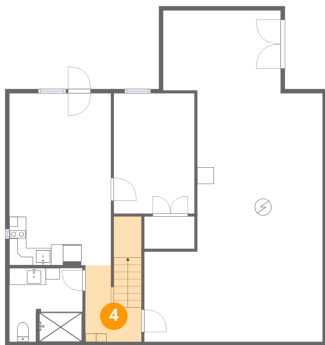
3 Floor 1 - Recreation Room



Dimensions: 12'2" x 14'10"
Area: 180 sq. ft
Counted as living area: Yes

Heated: Yes
Finished: Yes
Enclosed: Yes
Contiguous: Yes
Permitted: Yes
Wet space: No
Addition: No
Conversion: No

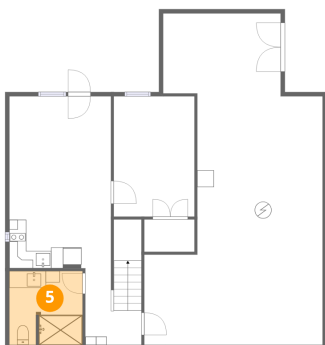
4 Floor 1 - Hall



Dimensions: 6'9" x 15'0"
Area: 101 sq. ft
Counted as living area: Yes

Heated: Yes
Finished: Yes
Enclosed: Yes
Contiguous: Yes
Permitted: Yes
Wet space: No
Addition: No
Conversion: No

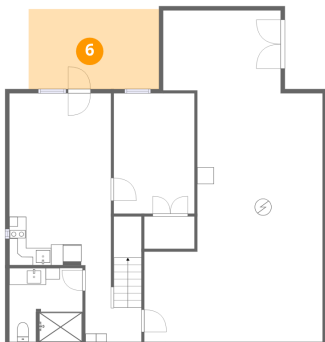
5 Floor 1 - Bath



Dimensions: 8'9" x 8'10"
Area: 77 sq. ft
Counted as living area: Yes

Heated: Yes
Finished: Yes
Enclosed: Yes
Contiguous: Yes
Permitted: Yes
Wet space: Yes
Addition: No
Conversion: No

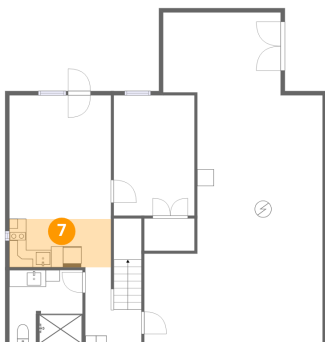
6 Floor 1 - Patio



Dimensions: 15'7" x 9'7"
Area: 149 sq. ft
Counted as living area: No

Heated: No
Finished: No
Enclosed: No
Contiguous: Yes
Permitted: Yes
Wet space: No
Addition: No
Conversion: No

7 Floor 1 - Kitchen



Dimensions: 12'2" x 5'9"
Area: 70 sq. ft
Counted as living area: Yes

Heated: Yes
Finished: Yes
Enclosed: Yes
Contiguous: Yes
Permitted: Yes
Wet space: No
Addition: No
Conversion: No

8 Floor 2 - Pantry



Dimensions: 5'9" x 3'11"
Area: 23 sq. ft
Counted as living area: Yes

Heated: Yes
Finished: Yes
Enclosed: Yes
Contiguous: Yes
Permitted: Yes
Wet space: No
Addition: No
Conversion: No

9 Floor 2 - Kitchen



Dimensions: 19'1" x 14'7"
Area: 279 sq. ft
Counted as living area: Yes

Heated: Yes
Finished: Yes
Enclosed: Yes
Contiguous: Yes
Permitted: Yes
Wet space: No
Addition: No
Conversion: No

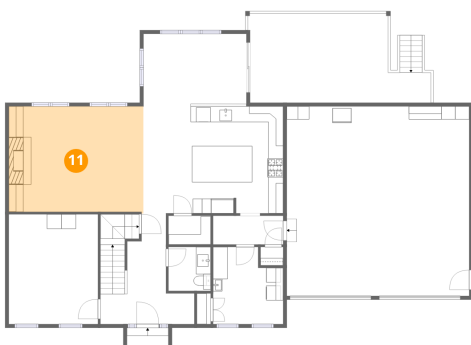
10 Floor 2 - Porch



Dimensions: 5'8" x 2'0"
Area: 11 sq. ft
Counted as living area: No

Heated: No
Finished: No
Enclosed: No
Contiguous: Yes
Permitted: Yes
Wet space: No
Addition: No
Conversion: No

11 Floor 2 - Family Room



Dimensions: 18'5" x 14'8"
Area: 269 sq. ft
Counted as living area: Yes

Heated: Yes
Finished: Yes
Enclosed: Yes
Contiguous: Yes
Permitted: Yes
Wet space: No
Addition: No
Conversion: No

12 Floor 2 - Hall



Dimensions: 9'7" x 3'11"
Area: 38 sq. ft
Counted as living area: Yes

Heated: Yes
Finished: Yes
Enclosed: Yes
Contiguous: Yes
Permitted: Yes
Wet space: No
Addition: No
Conversion: No

13 Floor 2 - Garage



Dimensions: 24'11" x 25'11"
Area: 645 sq. ft
Counted as living area: No

Heated: No
Finished: No
Enclosed: Yes
Contiguous: Yes
Permitted: Yes
Wet space: No
Addition: No
Conversion: No

14 Floor 2 - Deck



Dimensions: 24'8" x 12'2"
Area: 300 sq. ft
Counted as living area: No

Heated: No
Finished: No
Enclosed: No
Contiguous: Yes
Permitted: Yes
Wet space: No
Addition: No
Conversion: No

15 Floor 2 - Living Room



Dimensions: 12'2" x 15'0"
Area: 183 sq. ft
Counted as living area: Yes

Heated: Yes
Finished: Yes
Enclosed: Yes
Contiguous: Yes
Permitted: Yes
Wet space: No
Addition: No
Conversion: No

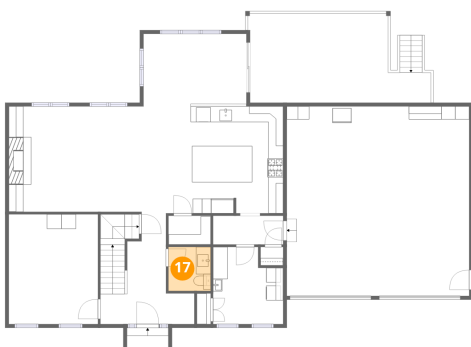
16 Floor 2 - Dining Area



Dimensions: 14'0" x 9'11"
Area: 139 sq. ft
Counted as living area: Yes

Heated: Yes
Finished: Yes
Enclosed: Yes
Contiguous: Yes
Permitted: Yes
Wet space: No
Addition: No
Conversion: No

17 Floor 2 - Bath



Dimensions: 5'9" x 6'0"
Area: 35 sq. ft
Counted as living area: Yes

Heated: Yes
Finished: Yes
Enclosed: Yes
Contiguous: Yes
Permitted: Yes
Wet space: Yes
Addition: No
Conversion: No

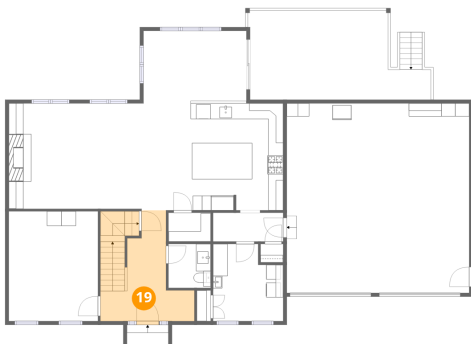
18 Floor 2 - Laundry



Dimensions: 9'7" x 10'6"
Area: 101 sq. ft
Counted as living area: Yes

Heated: Yes
Finished: Yes
Enclosed: Yes
Contiguous: Yes
Permitted: Yes
Wet space: No
Addition: No
Conversion: No

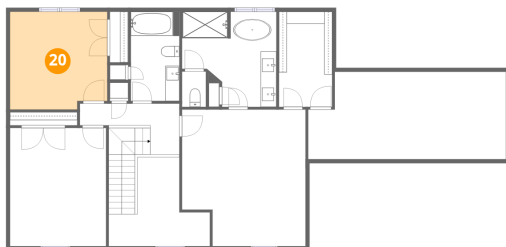
19 Floor 2 - Foyer



Dimensions: 12'10" x 15'7"
Area: 201 sq. ft
Counted as living area: Yes

Heated: Yes
Finished: Yes
Enclosed: Yes
Contiguous: Yes
Permitted: Yes
Wet space: No
Addition: No
Conversion: No

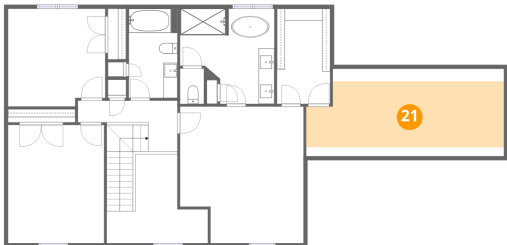
20 Floor 3 - Bedroom



Dimensions: 12'4" x 12'5"
Area: 153 sq. ft
Counted as living area: Yes

Heated: Yes
Finished: Yes
Enclosed: Yes
Contiguous: Yes
Permitted: Yes
Wet space: No
Addition: No
Conversion: No

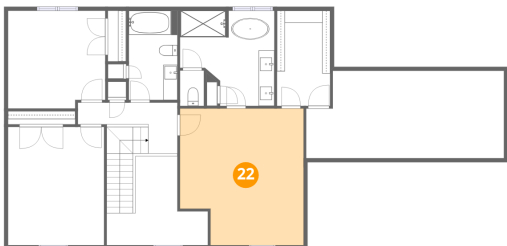
21 Floor 3 - Attic



Dimensions: 25'1" x 11'1"
Area: 277 sq. ft
Counted as living area: No

Heated: No
Finished: No
Enclosed: Yes
Contiguous: Yes
Permitted: Yes
Wet space: No
Addition: No
Conversion: No

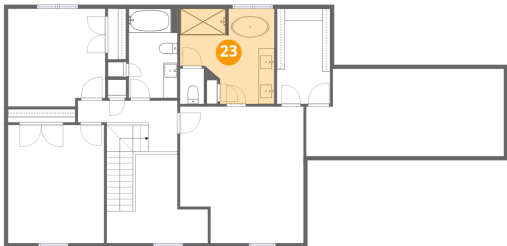
22 Floor 3 - Primary Bedroom



Dimensions: 15'8" x 17'4"
Area: 271 sq. ft
Counted as living area: Yes

Heated: Yes
Finished: Yes
Enclosed: Yes
Contiguous: Yes
Permitted: Yes
Wet space: No
Addition: No
Conversion: No

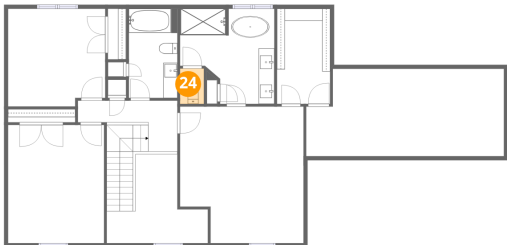
23 Floor 3 - Primary Bath



Dimensions: 12'0" x 12'1"
Area: 144 sq. ft
Counted as living area: Yes

Heated: Yes
Finished: Yes
Enclosed: Yes
Contiguous: Yes
Permitted: Yes
Wet space: Yes
Addition: No
Conversion: No

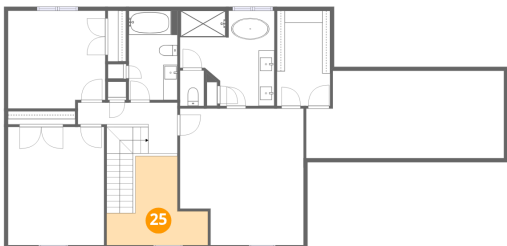
24 Floor 3 - Bath



Dimensions: 3'0" x 4'5"
Area: 13 sq. ft
Counted as living area: Yes

Heated: Yes
Finished: Yes
Enclosed: Yes
Contiguous: Yes
Permitted: Yes
Wet space: No
Addition: No
Conversion: No

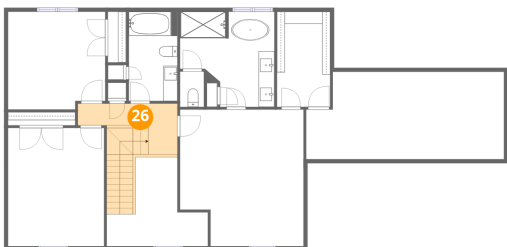
25 Floor 3 - Open To Below



Dimensions: 12'10" x 11'3"
Area: 145 sq. ft
Counted as living area: No

Heated: No
Finished: No
Enclosed: No
Contiguous: Yes
Permitted: No
Wet space: No
Addition: No
Conversion: No

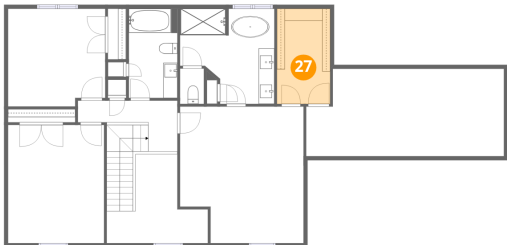
26 Floor 3 - Hall



Dimensions: 12'7" x 6'5"
Area: 81 sq. ft
Counted as living area: Yes

Heated: Yes
Finished: Yes
Enclosed: Yes
Contiguous: Yes
Permitted: Yes
Wet space: No
Addition: No
Conversion: No

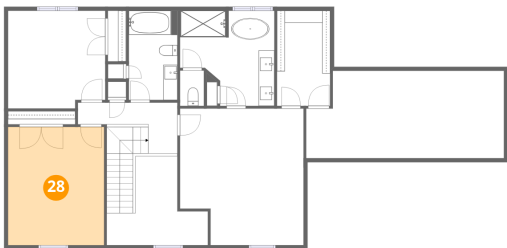
27 Floor 3 - W.I.C.



Dimensions: 6'9" x 12'1"
Area: 81 sq. ft
Counted as living area: Yes

Heated: Yes
Finished: Yes
Enclosed: Yes
Contiguous: Yes
Permitted: Yes
Wet space: No
Addition: No
Conversion: No

28 Floor 3 - Bedroom



Dimensions: 12'2" x 15'0"
Area: 183 sq. ft
Counted as living area: Yes

Heated: Yes
Finished: Yes
Enclosed: Yes
Contiguous: Yes
Permitted: Yes
Wet space: No
Addition: No
Conversion: No

29 Floor 3 - Bath



Dimensions: 6'2" x 11'4"
Area: 70 sq. ft
Counted as living area: Yes

Heated: Yes
Finished: Yes
Enclosed: Yes
Contiguous: Yes
Permitted: Yes
Wet space: Yes
Addition: No
Conversion: No