

Home data report

310 Runyan Ranch Rd, Tolar, Hood County, Texas, United States, 76476

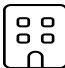



Total Area: 2785 sq. ft


1st Floor: 2785 sq. ft

Excluded: Garage 812 sq. ft, Walls: 183 sq. ft

Property summary

 **1** Floors

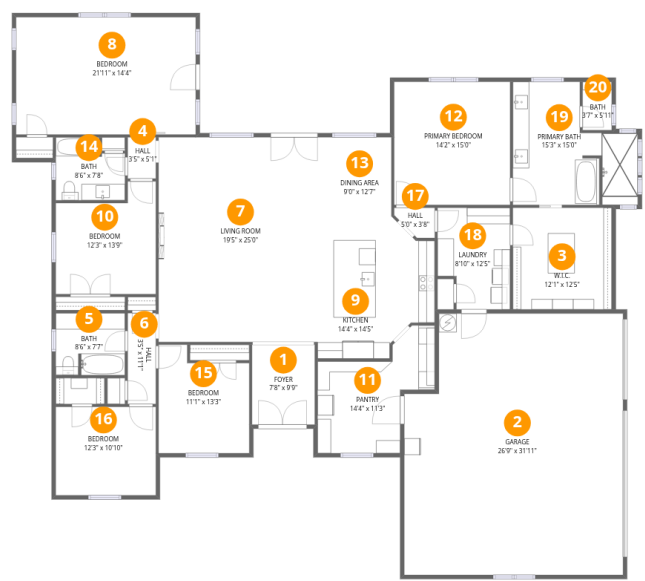
 **5** Bedrooms

 **3** Bathrooms

 **1** Garages

Home data report

310 Runyan Ranch Rd, Tolar, Hood County, Texas, United States, 76476



Room dimensions

Floor 1 Total:2785sqft Excluded: 812sqft

#		Dimensions	sqft	Counted as living area
1	Foyer	7'8" x 9'9"	75 sq. ft	Yes
2	Garage	26'9" x 31'11"	812 sq. ft	No
3	W.I.C.	12'1" x 12'5"	150 sq. ft	Yes
4	Hall	3'5" x 5'1"	17 sq. ft	Yes
5	Bath	8'6" x 7'7"	63 sq. ft	Yes
6	Hall	3'5" x 11'1"	38 sq. ft	Yes
7	Living Room	19'5" x 25'0"	485 sq. ft	Yes
8	Bedroom	21'11" x 14'4"	315 sq. ft	Yes
9	Kitchen	14'4" x 14'5"	186 sq. ft	Yes
10	Bedroom	12'3" x 13'9"	145 sq. ft	Yes
11	Pantry	14'4" x 11'3"	148 sq. ft	Yes

Home data report

310 Runyan Ranch Rd, Tolar, Hood County, Texas, United States, 76476

#		Dimensions	sqft	Counted as living area
12	Primary Bedroom	14'2" x 15'0"	213 sq. ft	Yes
13	Dining Area	9'0" x 12'7"	118 sq. ft	Yes
14	Bath	8'6" x 7'8"	59 sq. ft	Yes
15	Bedroom	11'1" x 13'3"	130 sq. ft	Yes
16	Bedroom	12'3" x 10'10"	132 sq. ft	Yes
17	Hall	5'0" x 3'8"	14 sq. ft	Yes
18	Laundry	8'10" x 12'5"	101 sq. ft	Yes
19	Primary Bath	15'3" x 15'0"	183 sq. ft	Yes
20	Bath	3'7" x 5'11"	21 sq. ft	Yes

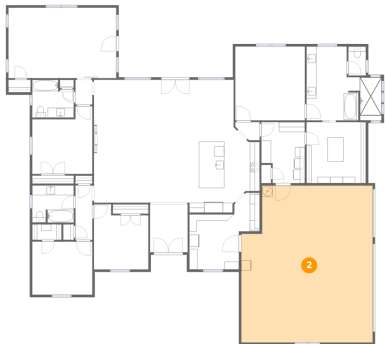
1 Floor 1 - Foyer



Dimensions: 7'8" x 9'9"
Area: 75 sq. ft
Counted as living area: Yes

Heated: Yes
Finished: Yes
Enclosed: Yes
Contiguous: Yes
Permitted: Yes
Wet space: No
Addition: No
Conversion: No

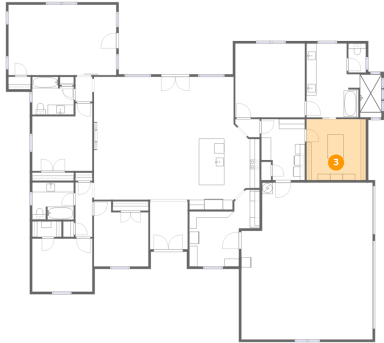
2 Floor 1 - Garage



Dimensions: 26'9" x 31'11"
Area: 812 sq. ft
Counted as living area: No

Heated: No
Finished: No
Enclosed: Yes
Contiguous: Yes
Permitted: Yes
Wet space: No
Addition: No
Conversion: No

3 Floor 1 - W.I.C.



Dimensions: 12'1" x 12'5"
Area: 150 sq. ft
Counted as living area: Yes

Heated: Yes
Finished: Yes
Enclosed: Yes
Contiguous: Yes
Permitted: Yes
Wet space: No
Addition: No
Conversion: No

4 Floor 1 - Hall



Dimensions: 3'5" x 5'1"
Area: 17 sq. ft
Counted as living area: Yes

Heated: Yes
Finished: Yes
Enclosed: Yes
Contiguous: Yes
Permitted: Yes
Wet space: No
Addition: No
Conversion: No

5 Floor 1 - Bath



Dimensions: 8'6" x 7'7"
Area: 63 sq. ft
Counted as living area: Yes

Heated: Yes
Finished: Yes
Enclosed: Yes
Contiguous: Yes
Permitted: Yes
Wet space: Yes
Addition: No
Conversion: No

310 Runyan Ranch Rd, Tolar, Hood County, Texas, United States,
76476

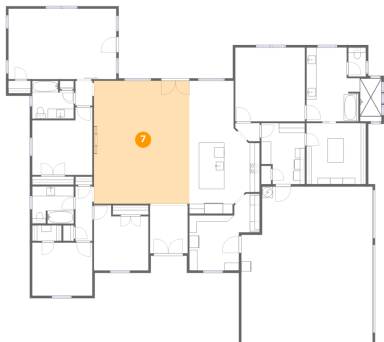
6 Floor 1 - Hall



Dimensions: 3'5" x 11'1"
Area: 38 sq. ft
Counted as living area: Yes

Heated: Yes
Finished: Yes
Enclosed: Yes
Contiguous: Yes
Permitted: Yes
Wet space: No
Addition: No
Conversion: No

7 Floor 1 - Living Room



Dimensions: 19'5" x 25'0"
Area: 485 sq. ft
Counted as living area: Yes

Heated: Yes
Finished: Yes
Enclosed: Yes
Contiguous: Yes
Permitted: Yes
Wet space: No
Addition: No
Conversion: No

8 Floor 1 - Bedroom



Dimensions: 21'11" x 14'4"
Area: 315 sq. ft
Counted as living area: Yes

Heated: Yes
Finished: Yes
Enclosed: Yes
Contiguous: Yes
Permitted: Yes
Wet space: No
Addition: No
Conversion: No

310 Runyan Ranch Rd, Tolar, Hood County, Texas, United States, 76476

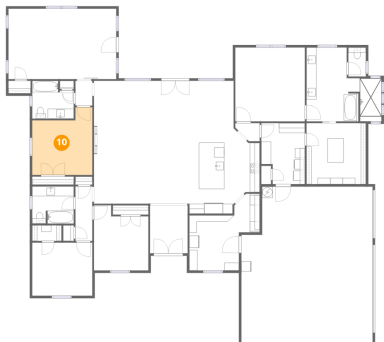
9 Floor 1 - Kitchen



Dimensions: 14'4" x 14'5"
Area: 186 sq. ft
Counted as living area: Yes

Heated: Yes
Finished: Yes
Enclosed: Yes
Contiguous: Yes
Permitted: Yes
Wet space: No
Addition: No
Conversion: No

10 Floor 1 - Bedroom



Dimensions: 12'3" x 13'9"
Area: 145 sq. ft
Counted as living area: Yes

Heated: Yes
Finished: Yes
Enclosed: Yes
Contiguous: Yes
Permitted: Yes
Wet space: No
Addition: No
Conversion: No

11 Floor 1 - Pantry



Dimensions: 14'4" x 11'3"
Area: 148 sq. ft
Counted as living area: Yes

Heated: Yes
Finished: Yes
Enclosed: Yes
Contiguous: Yes
Permitted: Yes
Wet space: No
Addition: No
Conversion: No

310 Runyan Ranch Rd, Tolar, Hood County, Texas, United States,
76476

12 Floor 1 - Primary Bedroom



Dimensions: 14'2" x 15'0"
Area: 213 sq. ft
Counted as living area: Yes

Heated: Yes
Finished: Yes
Enclosed: Yes
Contiguous: Yes
Permitted: Yes
Wet space: No
Addition: No
Conversion: No

13 Floor 1 - Dining Area



Dimensions: 9'0" x 12'7"
Area: 118 sq. ft
Counted as living area: Yes

Heated: Yes
Finished: Yes
Enclosed: Yes
Contiguous: Yes
Permitted: Yes
Wet space: No
Addition: No
Conversion: No

14 Floor 1 - Bath



Dimensions: 8'6" x 7'8"
Area: 59 sq. ft
Counted as living area: Yes

Heated: Yes
Finished: Yes
Enclosed: Yes
Contiguous: Yes
Permitted: Yes
Wet space: Yes
Addition: No
Conversion: No

15 Floor 1 - Bedroom



Dimensions: 11'1" x 13'3"
Area: 130 sq. ft
Counted as living area: Yes

Heated: Yes
Finished: Yes
Enclosed: Yes
Contiguous: Yes
Permitted: Yes
Wet space: No
Addition: No
Conversion: No

16 Floor 1 - Bedroom



Dimensions: 12'3" x 10'10"
Area: 132 sq. ft
Counted as living area: Yes

Heated: Yes
Finished: Yes
Enclosed: Yes
Contiguous: Yes
Permitted: Yes
Wet space: No
Addition: No
Conversion: No

17 Floor 1 - Hall



Dimensions: 5'0" x 3'8"
Area: 14 sq. ft
Counted as living area: Yes

Heated: Yes
Finished: Yes
Enclosed: Yes
Contiguous: Yes
Permitted: Yes
Wet space: No
Addition: No
Conversion: No

18 Floor 1 - Laundry



Dimensions: 8'10" x 12'5"
Area: 101 sq. ft
Counted as living area: Yes

Heated: Yes
Finished: Yes
Enclosed: Yes
Contiguous: Yes
Permitted: Yes
Wet space: No
Addition: No
Conversion: No

19 Floor 1 - Primary Bath



Dimensions: 15'3" x 15'0"
Area: 183 sq. ft
Counted as living area: Yes

Heated: Yes
Finished: Yes
Enclosed: Yes
Contiguous: Yes
Permitted: Yes
Wet space: Yes
Addition: No
Conversion: No

20 Floor 1 - Bath



Dimensions: 3'7" x 5'11"
Area: 21 sq. ft
Counted as living area: Yes

Heated: Yes
Finished: Yes
Enclosed: Yes
Contiguous: Yes
Permitted: Yes
Wet space: Yes
Addition: No
Conversion: No