



**Total Area: 5034 sq. ft**

Basement: 1303 sq. ft, 1st Floor: 1620 sq. ft, 2nd Floor: 2111 sq. ft

Excluded: Utility 374 sq. ft, Patio 326 sq. ft, Covered patio 276 sq. ft, Stairwell 182 sq. ft, Open to below 91 sq. ft, Garage 635 sq. ft, Walls: 342 sq. ft

## Property summary



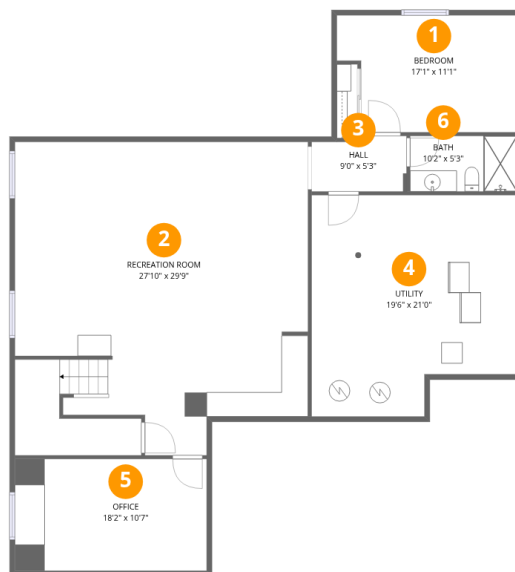
Home data report

**16036 Swan Mountain Dr, Broomfield, CO, US**

 **1**  
Half baths

 **1**  
Garages

# 16036 Swan Mountain Dr, Broomfield, CO, US



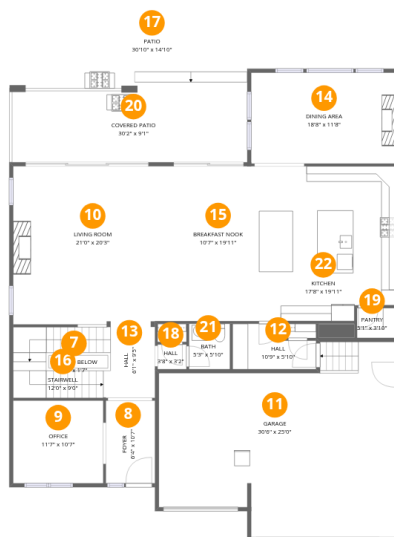
## Room dimensions

Floor 1 Below grade

Total: 1303 sqft

Excluded: 374 sqft

#		Dimensions	sqft	Counted as living area
1	Bedroom	17'1" x 11'1"	190 sq. ft	Yes
2	Recreation Room	27'10" x 29'9"	827 sq. ft	Yes
3	Hall	9'0" x 5'3"	48 sq. ft	Yes
4	Utility	19'6" x 21'0"	409 sq. ft	No
5	Office	18'2" x 10'7"	192 sq. ft	Yes
6	Bath	10'2" x 5'3"	54 sq. ft	Yes



## Room dimensions

Floor 2

Total: 1620sqft

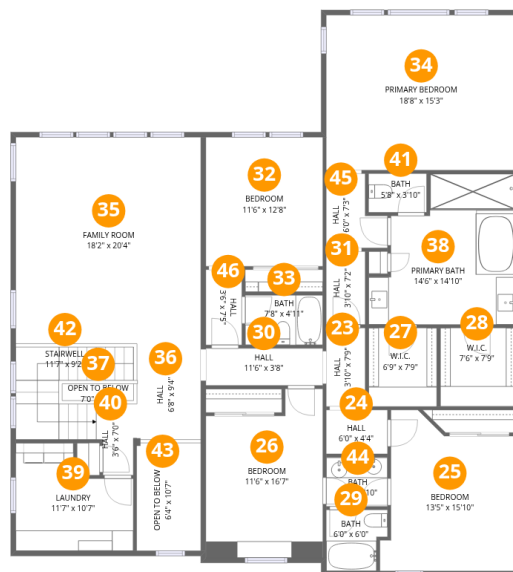
Excluded: 1348sqft

#		Dimensions	sqft	Counted as living area
7	Open To Below	7'7" x 1'7"	12 sq. ft	No
8	Foyer	6'4" x 10'7"	67 sq. ft	Yes
9	Office	11'7" x 10'7"	123 sq. ft	Yes
10	Living Room	21'0" x 20'3"	426 sq. ft	Yes
11	Garage	30'6" x 25'0"	763 sq. ft	No
12	Hall	10'9" x 5'10"	62 sq. ft	Yes
13	Hall	6'1" x 9'5"	57 sq. ft	Yes
14	Dining Area	18'8" x 11'8"	218 sq. ft	Yes
15	Breakfast Nook	10'7" x 19'11"	210 sq. ft	Yes
16	Stairwell	12'0" x 9'0"	108 sq. ft	No
17	Patio	30'10" x 14'10"	456 sq. ft	No

Home data report

**16036 Swan Mountain Dr,Broomfield,CO,US**

#		Dimensions	sqft	Counted as living area
18	Hall	3'8" x 3'2"	12 sq. ft	Yes
19	Pantry	5'1" x 3'10"	20 sq. ft	Yes
20	Covered Patio	30'2" x 9'1"	274 sq. ft	No
21	Bath	5'3" x 5'10"	30 sq. ft	Yes
22	Kitchen	17'8" x 19'11"	351 sq. ft	Yes



## Room dimensions

Floor 3

Total: 2111 sqft Excluded: 162 sqft

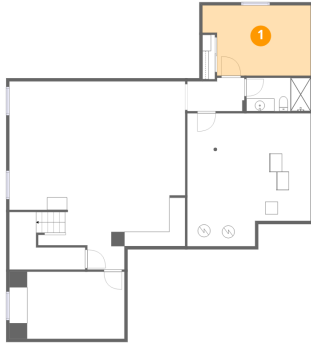
#		Dimensions	sqft	Counted as living area
23	Hall	3'10" x 7'9"	30 sq. ft	Yes
24	Hall	6'0" x 4'4"	26 sq. ft	Yes
25	Bedroom	13'5" x 15'10"	212 sq. ft	Yes
26	Bedroom	11'6" x 16'7"	191 sq. ft	Yes
27	W.I.C.	6'9" x 7'9"	52 sq. ft	Yes
28	W.I.C.	7'6" x 7'9"	58 sq. ft	Yes
29	Bath	6'0" x 6'0"	36 sq. ft	Yes
30	Hall	11'6" x 3'8"	42 sq. ft	Yes
31	Hall	3'10" x 7'2"	28 sq. ft	Yes
32	Bedroom	11'6" x 12'8"	146 sq. ft	Yes
33	Bath	7'8" x 4'11"	37 sq. ft	Yes

Home data report

16036 Swan Mountain Dr,Broomfield,CO,US

#		Dimensions	sqft	Counted as living area
34	Primary Bedroom	18'8" x 15'3"	285 sq. ft	Yes
35	Family Room	18'2" x 20'4"	370 sq. ft	Yes
36	Hall	6'8" x 9'4"	62 sq. ft	Yes
37	Open To Below	7'0" x 1'8"	12 sq. ft	No
38	Primary Bath	14'6" x 14'10"	216 sq. ft	Yes
39	Laundry	11'7" x 10'7"	122 sq. ft	Yes
40	Hall	3'6" x 7'0"	24 sq. ft	Yes
41	Bath	5'8" x 3'10"	22 sq. ft	Yes
42	Stairwell	11'7" x 9'2"	106 sq. ft	No
43	Open To Below	6'4" x 10'7"	67 sq. ft	No
44	Bath	6'0" x 4'10"	29 sq. ft	Yes
45	Hall	6'0" x 7'3"	44 sq. ft	Yes
46	Hall	3'6" x 7'5"	26 sq. ft	Yes

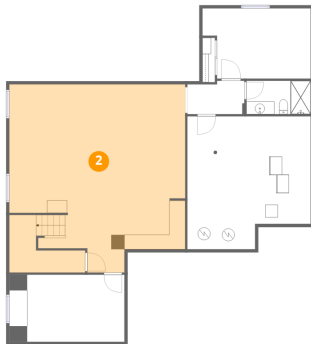
## 1 Floor 1 - Bedroom



Dimensions: 17'1" x 11'1"  
Area: 190 sq. ft  
Counted as living area: Yes

Heated: Yes  
Finished: Yes  
Enclosed: Yes  
Contiguous: Yes  
Permitted: Yes  
Wet space: No  
Addition: No  
Conversion: No

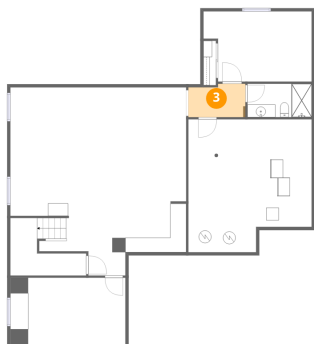
## 2 Floor 1 - Recreation Room



Dimensions: 27'10" x 29'9"  
Area: 827 sq. ft  
Counted as living area: Yes

Heated: Yes  
Finished: Yes  
Enclosed: Yes  
Contiguous: Yes  
Permitted: Yes  
Wet space: No  
Addition: No  
Conversion: No

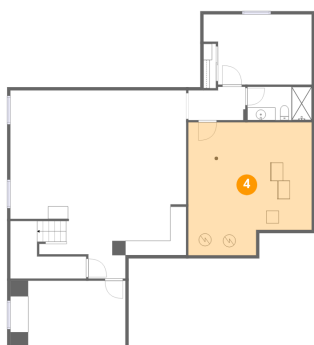
### 3 Floor 1 - Hall



Dimensions: 9'0" x 5'3"  
Area: 48 sq. ft  
Counted as living area: Yes

Heated: Yes  
Finished: Yes  
Enclosed: Yes  
Contiguous: Yes  
Permitted: Yes  
Wet space: No  
Addition: No  
Conversion: No

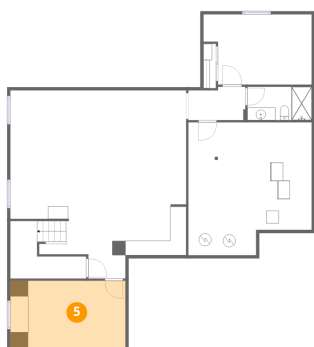
### 4 Floor 1 - Utility



Dimensions: 19'6" x 21'0"  
Area: 409 sq. ft  
Counted as living area: No

Heated: Yes  
Finished: No  
Enclosed: Yes  
Contiguous: Yes  
Permitted: Yes  
Wet space: No  
Addition: No  
Conversion: No

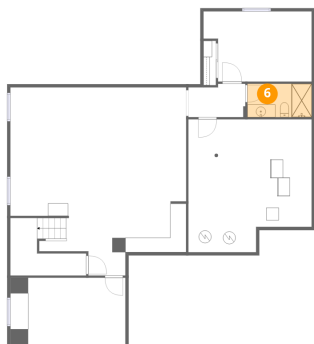
### 5 Floor 1 - Office



Dimensions: 18'2" x 10'7"  
Area: 192 sq. ft  
Counted as living area: Yes

Heated: Yes  
Finished: Yes  
Enclosed: Yes  
Contiguous: Yes  
Permitted: Yes  
Wet space: No  
Addition: No  
Conversion: No

## 6 Floor 1 - Bath



Dimensions: 10'2" x 5'3"  
Area: 54 sq. ft  
Counted as living area: Yes

Heated: Yes  
Finished: Yes  
Enclosed: Yes  
Contiguous: Yes  
Permitted: Yes  
Wet space: Yes  
Addition: No  
Conversion: No

## 7 Floor 2 - Open To Below



Dimensions: 7'7" x 1'7"  
Area: 12 sq. ft  
Counted as living area: No

Heated: No  
Finished: No  
Enclosed: No  
Contiguous: Yes  
Permitted: No  
Wet space: No  
Addition: No  
Conversion: No

## 8 Floor 2 - Foyer



Dimensions: 6'4" x 10'7"  
Area: 67 sq. ft  
Counted as living area: Yes

Heated: Yes  
Finished: Yes  
Enclosed: Yes  
Contiguous: Yes  
Permitted: Yes  
Wet space: No  
Addition: No  
Conversion: No

### 9 Floor 2 - Office



Dimensions: 11'7" x 10'7"  
Area: 123 sq. ft  
Counted as living area: Yes

Heated: Yes  
Finished: Yes  
Enclosed: Yes  
Contiguous: Yes  
Permitted: Yes  
Wet space: No  
Addition: No  
Conversion: No

### 10 Floor 2 - Living Room



Dimensions: 21'0" x 20'3"  
Area: 426 sq. ft  
Counted as living area: Yes

Heated: Yes  
Finished: Yes  
Enclosed: Yes  
Contiguous: Yes  
Permitted: Yes  
Wet space: No  
Addition: No  
Conversion: No

### 11 Floor 2 - Garage



Dimensions: 30'6" x 25'0"  
Area: 763 sq. ft  
Counted as living area: No

Heated: No  
Finished: No  
Enclosed: Yes  
Contiguous: Yes  
Permitted: Yes  
Wet space: No  
Addition: No  
Conversion: No

**12** Floor 2 - Hall



Dimensions: 10'9" x 5'10"  
Area: 62 sq. ft  
Counted as living area: Yes

Heated: Yes  
Finished: Yes  
Enclosed: Yes  
Contiguous: Yes  
Permitted: Yes  
Wet space: No  
Addition: No  
Conversion: No

**13** Floor 2 - Hall



Dimensions: 6'1" x 9'5"  
Area: 57 sq. ft  
Counted as living area: Yes

Heated: Yes  
Finished: Yes  
Enclosed: Yes  
Contiguous: Yes  
Permitted: Yes  
Wet space: No  
Addition: No  
Conversion: No

**14** Floor 2 - Dining Area



Dimensions: 18'8" x 11'8"  
Area: 218 sq. ft  
Counted as living area: Yes

Heated: Yes  
Finished: Yes  
Enclosed: Yes  
Contiguous: Yes  
Permitted: Yes  
Wet space: No  
Addition: No  
Conversion: No

### 15 Floor 2 - Breakfast Nook



Dimensions: 10'7" x 19'11"  
Area: 210 sq. ft  
Counted as living area: Yes

Heated: Yes  
Finished: Yes  
Enclosed: Yes  
Contiguous: Yes  
Permitted: Yes  
Wet space: No  
Addition: No  
Conversion: No

### 16 Floor 2 - Stairwell



Dimensions: 12'0" x 9'0"  
Area: 108 sq. ft  
Counted as living area: No

Heated: No  
Finished: No  
Enclosed: No  
Contiguous: Yes  
Permitted: No  
Wet space: No  
Addition: No  
Conversion: No

### 17 Floor 2 - Patio



Dimensions: 30'10" x 14'10"  
Area: 456 sq. ft  
Counted as living area: No

Heated: No  
Finished: No  
Enclosed: No  
Contiguous: Yes  
Permitted: Yes  
Wet space: No  
Addition: No  
Conversion: No

**18** Floor 2 - Hall



Dimensions: 3'8" x 3'2"  
Area: 12 sq. ft  
Counted as living area: Yes

Heated: Yes  
Finished: Yes  
Enclosed: Yes  
Contiguous: Yes  
Permitted: Yes  
Wet space: No  
Addition: No  
Conversion: No

**19** Floor 2 - Pantry



Dimensions: 5'1" x 3'10"  
Area: 20 sq. ft  
Counted as living area: Yes

Heated: Yes  
Finished: Yes  
Enclosed: Yes  
Contiguous: Yes  
Permitted: Yes  
Wet space: No  
Addition: No  
Conversion: No

**20** Floor 2 - Covered Patio



Dimensions: 30'2" x 9'1"  
Area: 274 sq. ft  
Counted as living area: No

Heated: No  
Finished: No  
Enclosed: No  
Contiguous: Yes  
Permitted: Yes  
Wet space: No  
Addition: No  
Conversion: No

### 21 Floor 2 - Bath



Dimensions: 5'3" x 5'10"  
Area: 30 sq. ft  
Counted as living area: Yes

Heated: Yes  
Finished: Yes  
Enclosed: Yes  
Contiguous: Yes  
Permitted: Yes  
Wet space: Yes  
Addition: No  
Conversion: No

### 22 Floor 2 - Kitchen



Dimensions: 17'8" x 19'11"  
Area: 351 sq. ft  
Counted as living area: Yes

Heated: Yes  
Finished: Yes  
Enclosed: Yes  
Contiguous: Yes  
Permitted: Yes  
Wet space: No  
Addition: No  
Conversion: No

### 23 Floor 3 - Hall



Dimensions: 3'10" x 7'9"  
Area: 30 sq. ft  
Counted as living area: Yes

Heated: Yes  
Finished: Yes  
Enclosed: Yes  
Contiguous: Yes  
Permitted: Yes  
Wet space: No  
Addition: No  
Conversion: No

**24** Floor 3 - Hall



Dimensions: 6'0" x 4'4"  
Area: 26 sq. ft  
Counted as living area: Yes

Heated: Yes  
Finished: Yes  
Enclosed: Yes  
Contiguous: Yes  
Permitted: Yes  
Wet space: No  
Addition: No  
Conversion: No

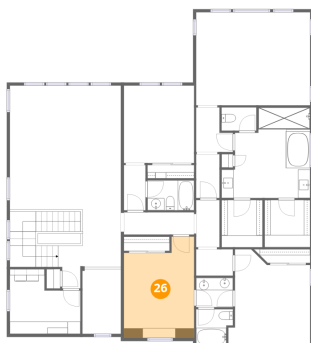
**25** Floor 3 - Bedroom



Dimensions: 13'5" x 15'10"  
Area: 212 sq. ft  
Counted as living area: Yes

Heated: Yes  
Finished: Yes  
Enclosed: Yes  
Contiguous: Yes  
Permitted: Yes  
Wet space: No  
Addition: No  
Conversion: No

**26** Floor 3 - Bedroom



Dimensions: 11'6" x 16'7"  
Area: 191 sq. ft  
Counted as living area: Yes

Heated: Yes  
Finished: Yes  
Enclosed: Yes  
Contiguous: Yes  
Permitted: Yes  
Wet space: No  
Addition: No  
Conversion: No

**27** Floor 3 - W.I.C.



Dimensions: 6'9" x 7'9"  
Area: 52 sq. ft  
Counted as living area: Yes

Heated: Yes  
Finished: Yes  
Enclosed: Yes  
Contiguous: Yes  
Permitted: Yes  
Wet space: No  
Addition: No  
Conversion: No

**28** Floor 3 - W.I.C.



Dimensions: 7'6" x 7'9"  
Area: 58 sq. ft  
Counted as living area: Yes

Heated: Yes  
Finished: Yes  
Enclosed: Yes  
Contiguous: Yes  
Permitted: Yes  
Wet space: No  
Addition: No  
Conversion: No

**29** Floor 3 - Bath



Dimensions: 6'0" x 6'0"  
Area: 36 sq. ft  
Counted as living area: Yes

Heated: Yes  
Finished: Yes  
Enclosed: Yes  
Contiguous: Yes  
Permitted: Yes  
Wet space: Yes  
Addition: No  
Conversion: No

**30** Floor 3 - Hall

---



Dimensions: 11'6" x 3'8"  
Area: 42 sq. ft  
Counted as living area: Yes

Heated: Yes  
Finished: Yes  
Enclosed: Yes  
Contiguous: Yes  
Permitted: Yes  
Wet space: No  
Addition: No  
Conversion: No

**31** Floor 3 - Hall

---



Dimensions: 3'10" x 7'2"  
Area: 28 sq. ft  
Counted as living area: Yes

Heated: Yes  
Finished: Yes  
Enclosed: Yes  
Contiguous: Yes  
Permitted: Yes  
Wet space: No  
Addition: No  
Conversion: No

**32** Floor 3 - Bedroom

---



Dimensions: 11'6" x 12'8"  
Area: 146 sq. ft  
Counted as living area: Yes

Heated: Yes  
Finished: Yes  
Enclosed: Yes  
Contiguous: Yes  
Permitted: Yes  
Wet space: No  
Addition: No  
Conversion: No

**33** Floor 3 - Bath



Dimensions: 7'8" x 4'11"  
Area: 37 sq. ft  
Counted as living area: Yes

Heated: Yes  
Finished: Yes  
Enclosed: Yes  
Contiguous: Yes  
Permitted: Yes  
Wet space: Yes  
Addition: No  
Conversion: No

**34** Floor 3 - Primary Bedroom



Dimensions: 18'8" x 15'3"  
Area: 285 sq. ft  
Counted as living area: Yes

Heated: Yes  
Finished: Yes  
Enclosed: Yes  
Contiguous: Yes  
Permitted: Yes  
Wet space: No  
Addition: No  
Conversion: No

**35** Floor 3 - Family Room



Dimensions: 18'2" x 20'4"  
Area: 370 sq. ft  
Counted as living area: Yes

Heated: Yes  
Finished: Yes  
Enclosed: Yes  
Contiguous: Yes  
Permitted: Yes  
Wet space: No  
Addition: No  
Conversion: No

**36** Floor 3 - Hall



Dimensions: 6'8" x 9'4"  
Area: 62 sq. ft  
Counted as living area: Yes

Heated: Yes  
Finished: Yes  
Enclosed: Yes  
Contiguous: Yes  
Permitted: Yes  
Wet space: No  
Addition: No  
Conversion: No

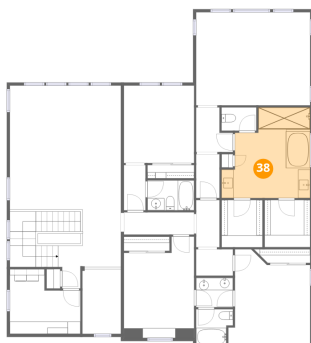
**37** Floor 3 - Open To Below



Dimensions: 7'0" x 1'8"  
Area: 12 sq. ft  
Counted as living area: No

Heated: No  
Finished: No  
Enclosed: No  
Contiguous: Yes  
Permitted: No  
Wet space: No  
Addition: No  
Conversion: No

**38** Floor 3 - Primary Bath



Dimensions: 14'6" x 14'10"  
Area: 216 sq. ft  
Counted as living area: Yes

Heated: Yes  
Finished: Yes  
Enclosed: Yes  
Contiguous: Yes  
Permitted: Yes  
Wet space: Yes  
Addition: No  
Conversion: No

### 39 Floor 3 - Laundry



Dimensions: 11'7" x 10'7"  
Area: 122 sq. ft  
Counted as living area: Yes

Heated: Yes  
Finished: Yes  
Enclosed: Yes  
Contiguous: Yes  
Permitted: Yes  
Wet space: No  
Addition: No  
Conversion: No

### 40 Floor 3 - Hall



Dimensions: 3'6" x 7'0"  
Area: 24 sq. ft  
Counted as living area: Yes

Heated: Yes  
Finished: Yes  
Enclosed: Yes  
Contiguous: Yes  
Permitted: Yes  
Wet space: No  
Addition: No  
Conversion: No

### 41 Floor 3 - Bath



Dimensions: 5'8" x 3'10"  
Area: 22 sq. ft  
Counted as living area: Yes

Heated: Yes  
Finished: Yes  
Enclosed: Yes  
Contiguous: Yes  
Permitted: Yes  
Wet space: Yes  
Addition: No  
Conversion: No

### 42 Floor 3 - Stairwell



Dimensions: 11'7" x 9'2"  
Area: 106 sq. ft  
Counted as living area: No

Heated: No  
Finished: No  
Enclosed: No  
Contiguous: Yes  
Permitted: No  
Wet space: No  
Addition: No  
Conversion: No

### 43 Floor 3 - Open To Below



Dimensions: 6'4" x 10'7"  
Area: 67 sq. ft  
Counted as living area: No

Heated: No  
Finished: No  
Enclosed: No  
Contiguous: Yes  
Permitted: No  
Wet space: No  
Addition: No  
Conversion: No

### 44 Floor 3 - Bath



Dimensions: 6'0" x 4'10"  
Area: 29 sq. ft  
Counted as living area: Yes

Heated: Yes  
Finished: Yes  
Enclosed: Yes  
Contiguous: Yes  
Permitted: Yes  
Wet space: Yes  
Addition: No  
Conversion: No

**45** Floor 3 - Hall

---



Dimensions: 6'0" x 7'3"  
Area: 44 sq. ft  
Counted as living area: Yes

Heated: Yes  
Finished: Yes  
Enclosed: Yes  
Contiguous: Yes  
Permitted: Yes  
Wet space: No  
Addition: No  
Conversion: No

**46** Floor 3 - Hall

---



Dimensions: 3'6" x 7'5"  
Area: 26 sq. ft  
Counted as living area: Yes

Heated: Yes  
Finished: Yes  
Enclosed: Yes  
Contiguous: Yes  
Permitted: Yes  
Wet space: No  
Addition: No  
Conversion: No