

Home data report

104 Stonewood Drive, Carleton Place, Lanark County, Ontario, Canada, K7C 3P2



Total Area: 3317 sq. ft

Basement: 1040 sq. ft, 1st Floor: 1268 sq. ft, 2nd Floor: 1009 sq. ft

Excluded: Storage 142 sq. ft, Hall 46 sq. ft, Utility 72 sq. ft, Garage 828 sq. ft, Balcony 186 sq. ft, Walls: 297 sq. ft

Property summary



Home data report

**104 Stonewood Drive, Carleton Place, Lanark County, Ontario,
Canada, K7C 3P2**



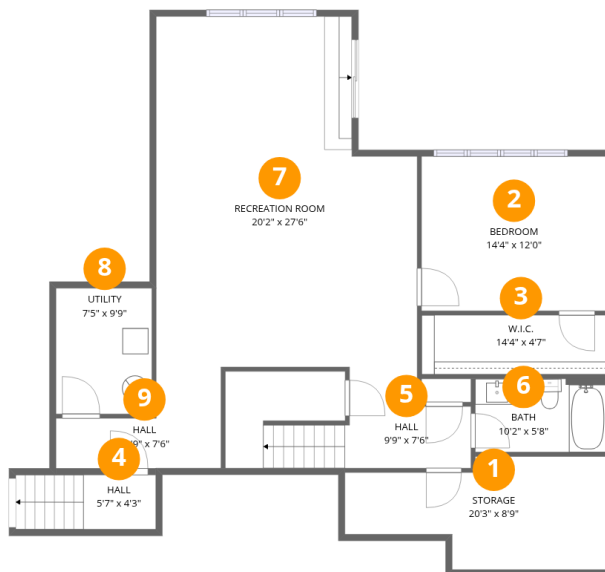
1
Half baths



1
Garages

Home data report

104 Stonewood Drive, Carleton Place, Lanark County, Ontario, Canada, K7C 3P2



Room dimensions

Floor 1 Below grade

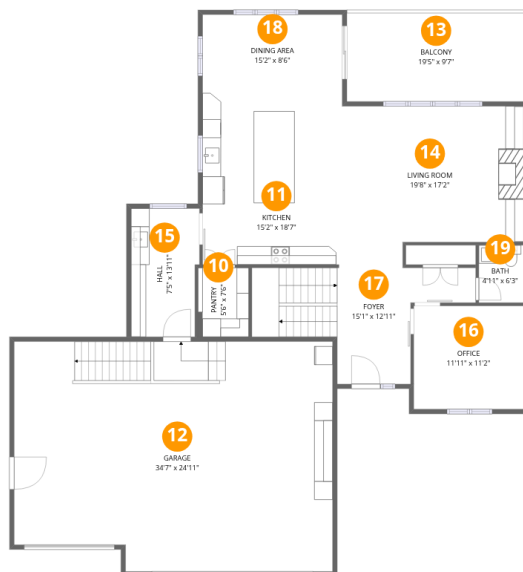
Total:1040sqft

Excluded: 260sqft

#		Dimensions	sqft	Counted as living area
1	Storage	20'3" x 8'9"	142 sq. ft	No
2	Bedroom	14'4" x 12'0"	171 sq. ft	Yes
3	W.I.C.	14'4" x 4'7"	66 sq. ft	Yes
4	Hall	5'7" x 4'3"	46 sq. ft	No
5	Hall	9'9" x 7'6"	128 sq. ft	Yes
6	Bath	10'2" x 5'8"	58 sq. ft	Yes
7	Recreation Room	20'2" x 27'6"	497 sq. ft	Yes
8	Utility	7'5" x 9'9"	72 sq. ft	No
9	Hall	12'9" x 7'6"	68 sq. ft	Yes

Home data report

104 Stonewood Drive, Carleton Place, Lanark County, Ontario, Canada, K7C 3P2



Room dimensions

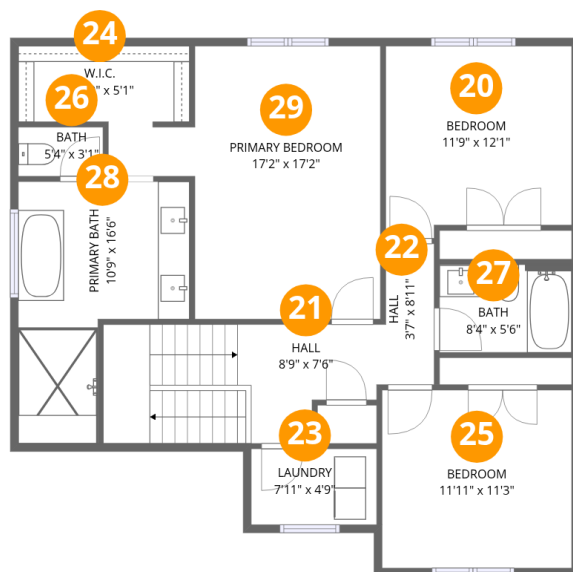
Floor 2

Total:1268sqft

Excluded: 1014sqft

#		Dimensions	sqft	Counted as living area
10	Pantry	5'6" x 7'6"	41 sq. ft	Yes
11	Kitchen	15'2" x 18'7"	282 sq. ft	Yes
12	Garage	34'7" x 24'11"	828 sq. ft	No
13	Balcony	19'5" x 9'7"	186 sq. ft	No
14	Living Room	19'8" x 17'2"	307 sq. ft	Yes
15	Hall	7'5" x 13'11"	100 sq. ft	Yes
16	Office	11'11" x 11'2"	134 sq. ft	Yes
17	Foyer	15'1" x 12'11"	200 sq. ft	Yes
18	Dining Area	15'2" x 8'6"	129 sq. ft	Yes
19	Bath	4'11" x 6'3"	31 sq. ft	Yes

104 Stonewood Drive, Carleton Place, Lanark County, Ontario, Canada, K7C 3P2



Room dimensions

Floor 3

Total:1009sqft Excluded: 0sqft

#		Dimensions	sqft	Counted as living area
20	Bedroom	11'9" x 12'1"	135 sq. ft	Yes
21	Hall	8'9" x 7'6"	118 sq. ft	Yes
22	Hall	3'7" x 8'11"	29 sq. ft	Yes
23	Laundry	7'11" x 4'9"	38 sq. ft	Yes
24	W.I.C.	10'10" x 5'1"	52 sq. ft	Yes
25	Bedroom	11'11" x 11'3"	134 sq. ft	Yes
26	Bath	5'4" x 3'1"	17 sq. ft	Yes
27	Bath	8'4" x 5'6"	46 sq. ft	Yes
28	Primary Bath	10'9" x 16'6"	133 sq. ft	Yes
29	Primary Bedroom	17'2" x 17'2"	218 sq. ft	Yes

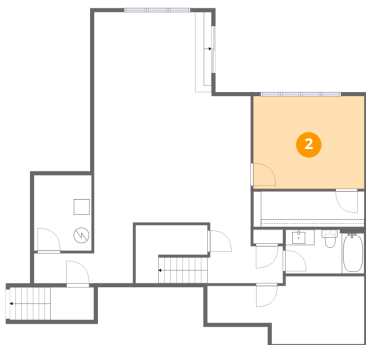
1 Floor 1 - Storage



Dimensions: 20'3" x 8'9"
Area: 142 sq. ft
Counted as living area: No

Heated: No
Finished: No
Enclosed: No
Contiguous: Yes
Permitted: Yes
Wet space: No
Addition: No
Conversion: No

2 Floor 1 - Bedroom

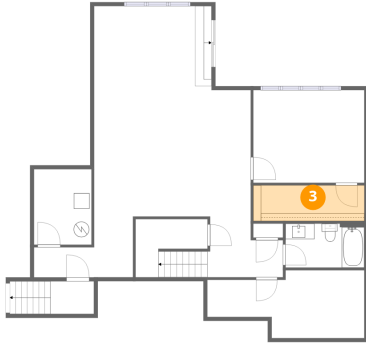


Dimensions: 14'4" x 12'0"
Area: 171 sq. ft
Counted as living area: Yes

Heated: Yes
Finished: Yes
Enclosed: Yes
Contiguous: Yes
Permitted: Yes
Wet space: No
Addition: No
Conversion: No

104 Stonewood Drive, Carleton Place, Lanark County, Ontario, Canada, K7C 3P2

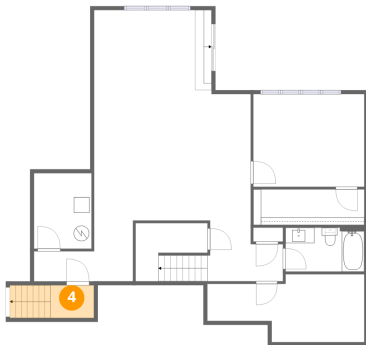
3 Floor 1 - W.I.C.



Dimensions: 14'4" x 4'7"
Area: 66 sq. ft
Counted as living area: Yes

Heated: Yes
Finished: Yes
Enclosed: Yes
Contiguous: Yes
Permitted: Yes
Wet space: No
Addition: No
Conversion: No

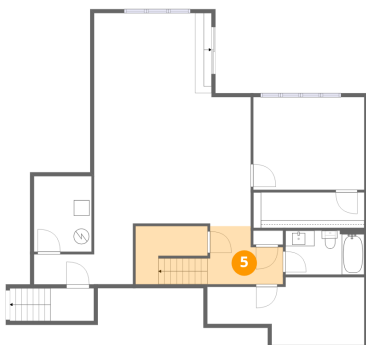
4 Floor 1 - Hall



Dimensions: 5'7" x 4'3"
Area: 46 sq. ft
Counted as living area: No

Heated: Yes
Finished: No
Enclosed: Yes
Contiguous: Yes
Permitted: Yes
Wet space: No
Addition: No
Conversion: No

5 Floor 1 - Hall

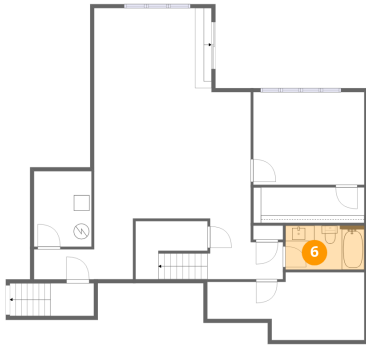


Dimensions: 9'9" x 7'6"
Area: 128 sq. ft
Counted as living area: Yes

Heated: Yes
Finished: Yes
Enclosed: Yes
Contiguous: Yes
Permitted: Yes
Wet space: No
Addition: No
Conversion: No

104 Stonewood Drive, Carleton Place, Lanark County, Ontario, Canada, K7C 3P2

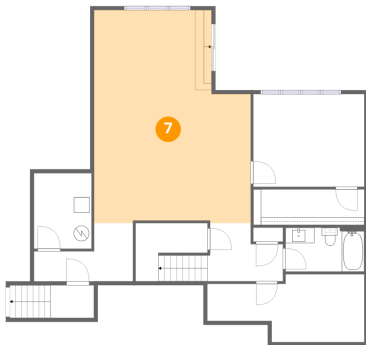
6 Floor 1 - Bath



Dimensions: 10'2" x 5'8"
Area: 58 sq. ft
Counted as living area: Yes

Heated: Yes
Finished: Yes
Enclosed: Yes
Contiguous: Yes
Permitted: Yes
Wet space: Yes
Addition: No
Conversion: No

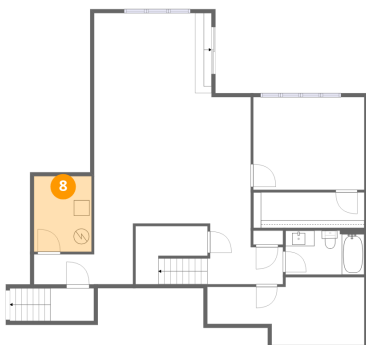
7 Floor 1 - Recreation Room



Dimensions: 20'2" x 27'6"
Area: 497 sq. ft
Counted as living area: Yes

Heated: Yes
Finished: Yes
Enclosed: Yes
Contiguous: Yes
Permitted: Yes
Wet space: No
Addition: No
Conversion: No

8 Floor 1 - Utility

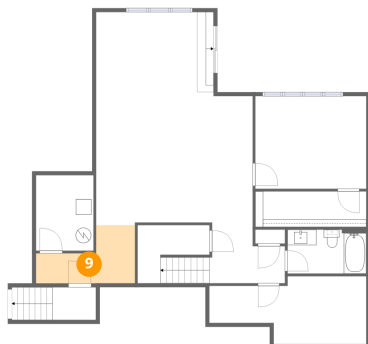


Dimensions: 7'5" x 9'9"
Area: 72 sq. ft
Counted as living area: No

Heated: Yes
Finished: No
Enclosed: Yes
Contiguous: Yes
Permitted: Yes
Wet space: No
Addition: No
Conversion: No

104 Stonewood Drive, Carleton Place, Lanark County, Ontario, Canada, K7C 3P2

9 Floor 1 - Hall



Dimensions: 12'9" x 7'6"
Area: 68 sq. ft
Counted as living area: Yes

Heated: Yes
Finished: Yes
Enclosed: Yes
Contiguous: Yes
Permitted: Yes
Wet space: No
Addition: No
Conversion: No

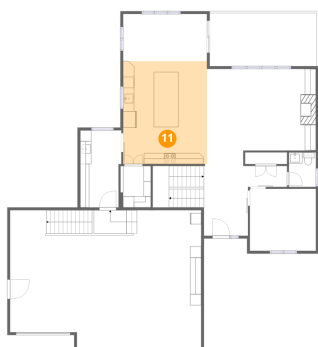
10 Floor 2 - Pantry



Dimensions: 5'6" x 7'6"
Area: 41 sq. ft
Counted as living area: Yes

Heated: Yes
Finished: Yes
Enclosed: Yes
Contiguous: Yes
Permitted: Yes
Wet space: No
Addition: No
Conversion: No

11 Floor 2 - Kitchen

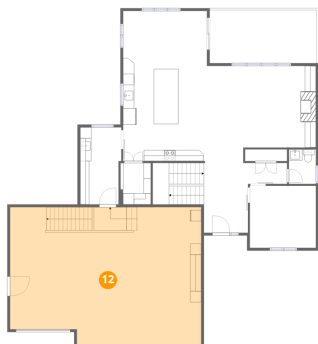


Dimensions: 15'2" x 18'7"
Area: 282 sq. ft
Counted as living area: Yes

Heated: Yes
Finished: Yes
Enclosed: Yes
Contiguous: Yes
Permitted: Yes
Wet space: No
Addition: No
Conversion: No

104 Stonewood Drive, Carleton Place, Lanark County, Ontario, Canada, K7C 3P2

12 Floor 2 - Garage



Dimensions: 34'7" x 24'11"

Area: 828 sq. ft

Counted as living area: No

Heated: No

Finished: No

Enclosed: Yes

Contiguous: Yes

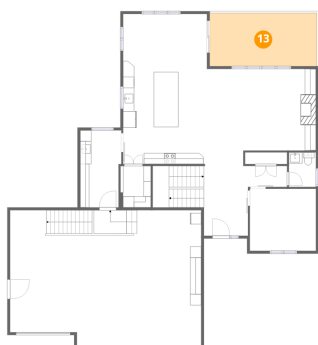
Permitted: Yes

Wet space: No

Addition: No

Conversion: No

13 Floor 2 - Balcony



Dimensions: 19'5" x 9'7"

Area: 186 sq. ft

Counted as living area: No

Heated: No

Finished: No

Enclosed: No

Contiguous: Yes

Permitted: Yes

Wet space: No

Addition: No

Conversion: No

14 Floor 2 - Living Room



Dimensions: 19'8" x 17'2"

Area: 307 sq. ft

Counted as living area: Yes

Heated: Yes

Finished: Yes

Enclosed: Yes

Contiguous: Yes

Permitted: Yes

Wet space: No

Addition: No

Conversion: No

104 Stonewood Drive, Carleton Place, Lanark County, Ontario, Canada, K7C 3P2

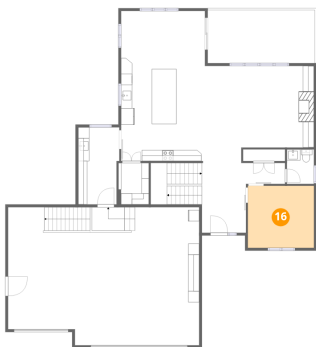
15 Floor 2 - Hall



Dimensions: 7'5" x 13'11"
Area: 100 sq. ft
Counted as living area: Yes

Heated: Yes
Finished: Yes
Enclosed: Yes
Contiguous: Yes
Permitted: Yes
Wet space: No
Addition: No
Conversion: No

16 Floor 2 - Office



Dimensions: 11'11" x 11'2"
Area: 134 sq. ft
Counted as living area: Yes

Heated: Yes
Finished: Yes
Enclosed: Yes
Contiguous: Yes
Permitted: Yes
Wet space: No
Addition: No
Conversion: No

17 Floor 2 - Foyer



Dimensions: 15'1" x 12'11"
Area: 200 sq. ft
Counted as living area: Yes

Heated: Yes
Finished: Yes
Enclosed: Yes
Contiguous: Yes
Permitted: Yes
Wet space: No
Addition: No
Conversion: No

18 Floor 2 - Dining Area



Dimensions: 15'2" x 8'6"
Area: 129 sq. ft
Counted as living area: Yes

Heated: Yes
Finished: Yes
Enclosed: Yes
Contiguous: Yes
Permitted: Yes
Wet space: No
Addition: No
Conversion: No

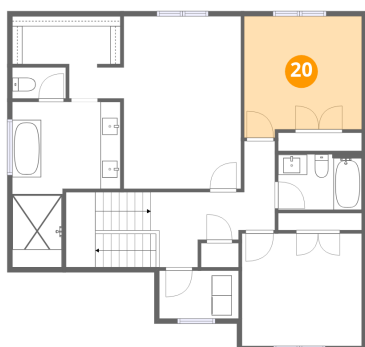
19 Floor 2 - Bath



Dimensions: 4'11" x 6'3"
Area: 31 sq. ft
Counted as living area: Yes

Heated: Yes
Finished: Yes
Enclosed: Yes
Contiguous: Yes
Permitted: Yes
Wet space: Yes
Addition: No
Conversion: No

20 Floor 3 - Bedroom



Dimensions: 11'9" x 12'1"
Area: 135 sq. ft
Counted as living area: Yes

Heated: Yes
Finished: Yes
Enclosed: Yes
Contiguous: Yes
Permitted: Yes
Wet space: No
Addition: No
Conversion: No

104 Stonewood Drive, Carleton Place, Lanark County, Ontario, Canada, K7C 3P2

21 Floor 3 - Hall



Dimensions: 8'9" x 7'6"
Area: 118 sq. ft
Counted as living area: Yes

Heated: Yes
Finished: Yes
Enclosed: Yes
Contiguous: Yes
Permitted: Yes
Wet space: No
Addition: No
Conversion: No

22 Floor 3 - Hall



Dimensions: 3'7" x 8'11"
Area: 29 sq. ft
Counted as living area: Yes

Heated: Yes
Finished: Yes
Enclosed: Yes
Contiguous: Yes
Permitted: Yes
Wet space: No
Addition: No
Conversion: No

23 Floor 3 - Laundry



Dimensions: 7'11" x 4'9"
Area: 38 sq. ft
Counted as living area: Yes

Heated: Yes
Finished: Yes
Enclosed: Yes
Contiguous: Yes
Permitted: Yes
Wet space: No
Addition: No
Conversion: No

24 Floor 3 - W.I.C.



Dimensions: 10'10" x 5'1"
Area: 52 sq. ft
Counted as living area: Yes

Heated: Yes
Finished: Yes
Enclosed: Yes
Contiguous: Yes
Permitted: Yes
Wet space: No
Addition: No
Conversion: No

25 Floor 3 - Bedroom



Dimensions: 11'11" x 11'3"
Area: 134 sq. ft
Counted as living area: Yes

Heated: Yes
Finished: Yes
Enclosed: Yes
Contiguous: Yes
Permitted: Yes
Wet space: No
Addition: No
Conversion: No

26 Floor 3 - Bath



Dimensions: 5'4" x 3'1"
Area: 17 sq. ft
Counted as living area: Yes

Heated: Yes
Finished: Yes
Enclosed: Yes
Contiguous: Yes
Permitted: Yes
Wet space: Yes
Addition: No
Conversion: No

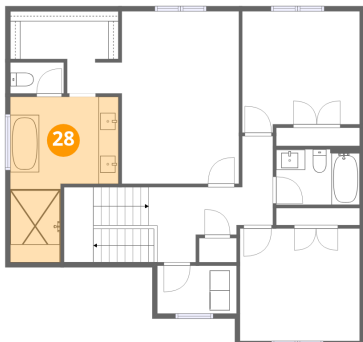
27 Floor 3 - Bath



Dimensions: 8'4" x 5'6"
Area: 46 sq. ft
Counted as living area: Yes

Heated: Yes
Finished: Yes
Enclosed: Yes
Contiguous: Yes
Permitted: Yes
Wet space: Yes
Addition: No
Conversion: No

28 Floor 3 - Primary Bath



Dimensions: 10'9" x 16'6"
Area: 133 sq. ft
Counted as living area: Yes

Heated: Yes
Finished: Yes
Enclosed: Yes
Contiguous: Yes
Permitted: Yes
Wet space: Yes
Addition: No
Conversion: No

29 Floor 3 - Primary Bedroom



Dimensions: 17'2" x 17'2"
Area: 218 sq. ft
Counted as living area: Yes

Heated: Yes
Finished: Yes
Enclosed: Yes
Contiguous: Yes
Permitted: Yes
Wet space: No
Addition: No
Conversion: No