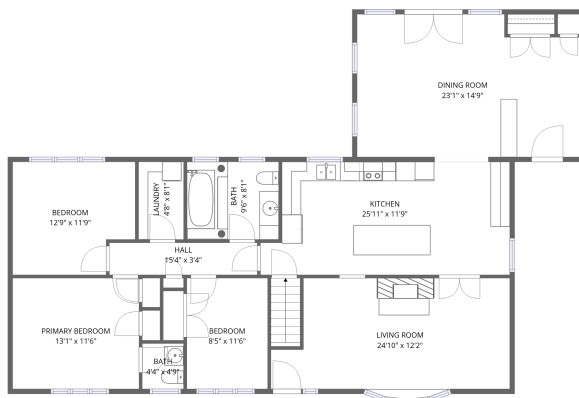
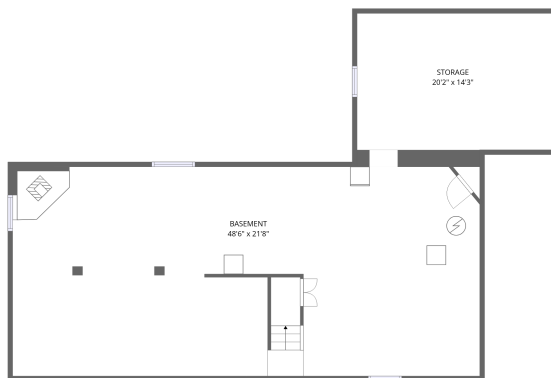


Home data report

4841 Torbolton Ridge Road, Fitzroy, Woodlawn, Ontario, Canada,
K0A 3M0



1st floor



Basement

Total Area: 1573 sq. ft

Basement: 0 sq. ft, 1st Floor: 1573 sq. ft

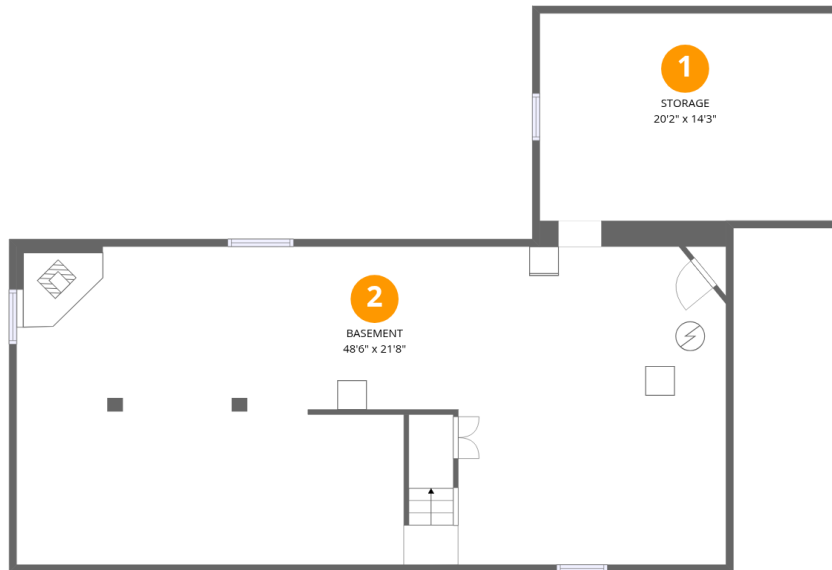
Excluded: Basement 1075 sq. ft, Storage 287 sq. ft, Walls: 193 sq. ft

Property summary



Home data report

4841 Torbolton Ridge Road, Fitzroy, Woodlawn, Ontario, Canada, K0A 3M0



Room dimensions

Floor 1 Below grade

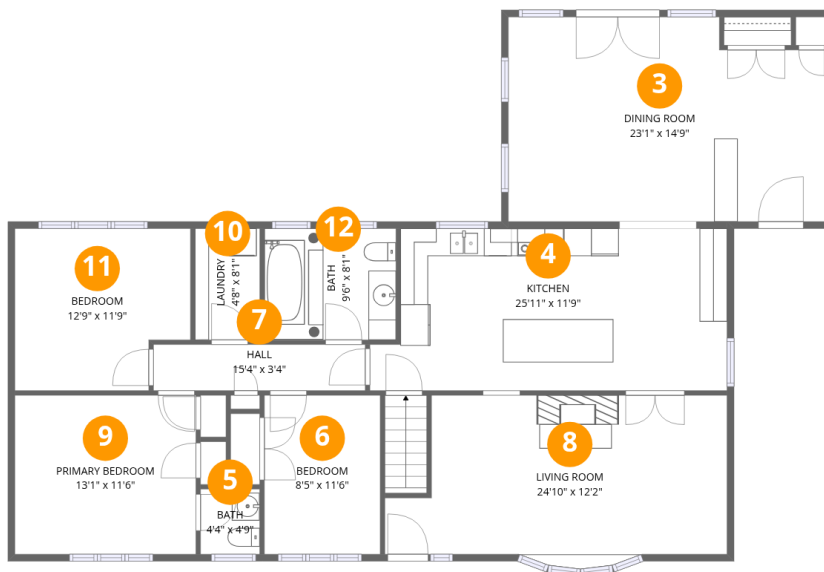
Total:0sqft

Excluded: 1362sqft

#		Dimensions	sqft	Counted as living area
1	Storage	20'2" x 14'3"	287 sq. ft	No
2	Basement	48'6" x 21'8"	1047 sq. ft	No

Home data report

4841 Torbolton Ridge Road, Fitzroy, Woodlawn, Ontario, Canada, K0A 3M0



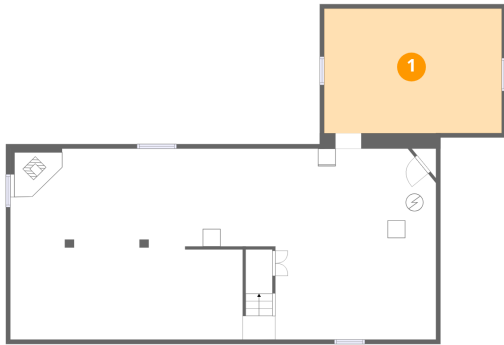
Room dimensions

Floor 2

Total:1573sqft Excluded: 0sqft

#		Dimensions	sqft	Counted as living area
3	Dining Room	23'1" x 14'9"	324 sq. ft	Yes
4	Kitchen	25'11" x 11'9"	285 sq. ft	Yes
5	Bath	4'4" x 4'9"	20 sq. ft	Yes
6	Bedroom	8'5" x 11'6"	97 sq. ft	Yes
7	Hall	15'4" x 3'4"	51 sq. ft	Yes
8	Living Room	24'10" x 12'2"	267 sq. ft	Yes
9	Primary Bedroom	13'1" x 11'6"	151 sq. ft	Yes
10	Laundry	4'8" x 8'1"	38 sq. ft	Yes
11	Bedroom	12'9" x 11'9"	138 sq. ft	Yes
12	Bath	9'6" x 8'1"	77 sq. ft	Yes

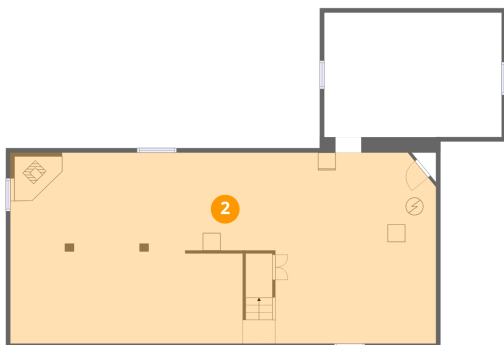
1 Floor 1 - Storage



Dimensions: 20'2" x 14'3"
Area: 287 sq. ft
Counted as living area: No

Heated: No
Finished: No
Enclosed: No
Contiguous: Yes
Permitted: Yes
Wet space: No
Addition: No
Conversion: No

2 Floor 1 - Basement



Dimensions: 48'6" x 21'8"
Area: 1047 sq. ft
Counted as living area: No

Heated: Yes
Finished: No
Enclosed: Yes
Contiguous: Yes
Permitted: Yes
Wet space: No
Addition: No
Conversion: No

3 Floor 2 - Dining Room



Dimensions: 23'1" x 14'9"
Area: 324 sq. ft
Counted as living area: Yes

Heated: Yes
Finished: Yes
Enclosed: Yes
Contiguous: Yes
Permitted: Yes
Wet space: No
Addition: No
Conversion: No

4 Floor 2 - Kitchen



Dimensions: 25'11" x 11'9"
Area: 285 sq. ft
Counted as living area: Yes

Heated: Yes
Finished: Yes
Enclosed: Yes
Contiguous: Yes
Permitted: Yes
Wet space: No
Addition: No
Conversion: No

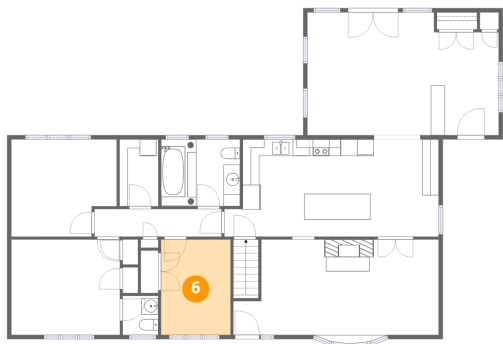
5 Floor 2 - Bath



Dimensions: 4'4" x 4'9"
Area: 20 sq. ft
Counted as living area: Yes

Heated: Yes
Finished: Yes
Enclosed: Yes
Contiguous: Yes
Permitted: Yes
Wet space: Yes
Addition: No
Conversion: No

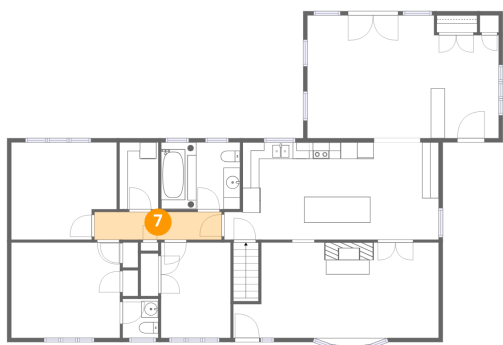
6 Floor 2 - Bedroom



Dimensions: 8'5" x 11'6"
Area: 97 sq. ft
Counted as living area: Yes

Heated: Yes
Finished: Yes
Enclosed: Yes
Contiguous: Yes
Permitted: Yes
Wet space: No
Addition: No
Conversion: No

7 Floor 2 - Hall



Dimensions: 15'4" x 3'4"
Area: 51 sq. ft
Counted as living area: Yes

Heated: Yes
Finished: Yes
Enclosed: Yes
Contiguous: Yes
Permitted: Yes
Wet space: No
Addition: No
Conversion: No

8 Floor 2 - Living Room



Dimensions: 24'10" x 12'2"
Area: 267 sq. ft
Counted as living area: Yes

Heated: Yes
Finished: Yes
Enclosed: Yes
Contiguous: Yes
Permitted: Yes
Wet space: No
Addition: No
Conversion: No

4841 Torbolton Ridge Road, Fitzroy, Woodlawn, Ontario, Canada,
K0A 3M0

9 Floor 2 - Primary Bedroom



Dimensions: 13'1" x 11'6"
Area: 151 sq. ft
Counted as living area: Yes

Heated: Yes
Finished: Yes
Enclosed: Yes
Contiguous: Yes
Permitted: Yes
Wet space: No
Addition: No
Conversion: No

10 Floor 2 - Laundry



Dimensions: 4'8" x 8'1"
Area: 38 sq. ft
Counted as living area: Yes

Heated: Yes
Finished: Yes
Enclosed: Yes
Contiguous: Yes
Permitted: Yes
Wet space: No
Addition: No
Conversion: No

11 Floor 2 - Bedroom



Dimensions: 12'9" x 11'9"
Area: 138 sq. ft
Counted as living area: Yes

Heated: Yes
Finished: Yes
Enclosed: Yes
Contiguous: Yes
Permitted: Yes
Wet space: No
Addition: No
Conversion: No

12 Floor 2 - Bath



Dimensions: 9'6" x 8'1"
Area: 77 sq. ft
Counted as living area: Yes

Heated: Yes
Finished: Yes
Enclosed: Yes
Contiguous: Yes
Permitted: Yes
Wet space: Yes
Addition: No
Conversion: No