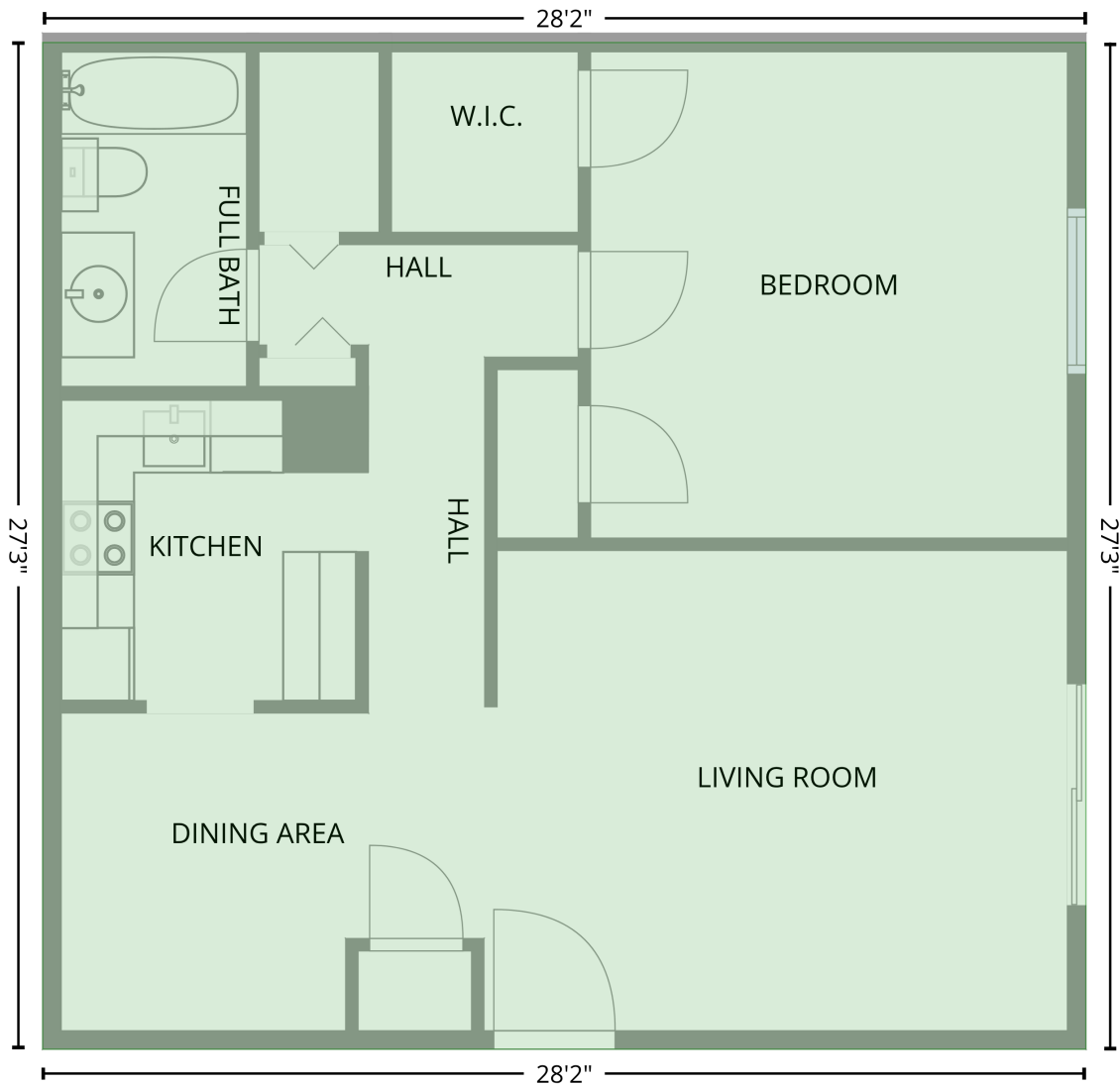


8005 Montero Drive, Prospect, Jefferson County, Kentucky, United States, 40059

Gross Living Area: 767 sq. ft

Level 1

1st floor
[AREA: 767]



Space	Area (sq. ft)	Calculation
1st floor (Living area)	767	Coordinate Polygon Area Algorithm using inches $-((367.3 + 367.3) * (56.8 - 383.5) + (367.3 + 29) * (383.5 - 383.5) + (29 + 29) * (383.5 - 56.8) + (29 + 367.3) * (56.8 - 56.8)) * 0.5 * 0.00694$