

Home data report

8462 Everett Way, Timber Cove, Arvada, Jefferson County, Colorado, United States, 80005, C




Total Area: 1114 sq. ft

1st Floor: 581 sq. ft, 2nd Floor: 533 sq. ft

Excluded: Garage 214 sq. ft, Storage 37 sq. ft, Porch 104 sq. ft, Walls: 106 sq. ft

Property summary

 2 Floors

 2 Bedrooms

 1 Bathrooms

Home data report

**8462 Everett Way, Timber Cove, Arvada, Jefferson County,
Colorado, United States, 80005, C**



1
Half baths



1
Garages

8462 Everett Way, Timber Cove, Arvada, Jefferson County, Colorado, United States, 80005, C



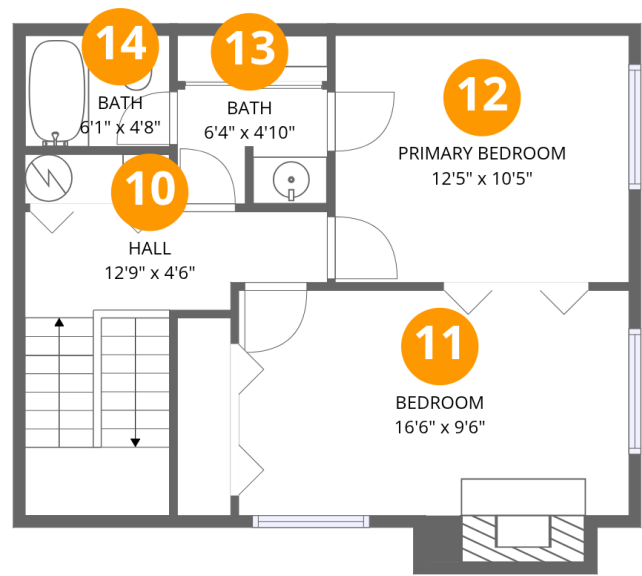
Room dimensions

Floor 1 Total:581sqft Excluded: 355sqft

#		Dimensions	sqft	Counted as living area
1	Dining Area	9'9" x 7'2"	69 sq. ft	Yes
2	Foyer	7'4" x 4'7"	34 sq. ft	Yes
3	Storage	5'6" x 6'8"	37 sq. ft	No
4	Bath	5'0" x 6'8"	33 sq. ft	Yes
5	Porch	9'7" x 11'5"	104 sq. ft	No
6	Kitchen	7'2" x 8'4"	60 sq. ft	Yes
7	Garage	21'3" x 10'0"	214 sq. ft	No
8	Hall	10'9" x 6'3"	93 sq. ft	Yes
9	Living Room	19'5" x 13'1"	254 sq. ft	Yes

Home data report

8462 Everett Way, Timber Cove, Arvada, Jefferson County,
Colorado, United States, 80005, C



Room dimensions

Floor 2 Total:533sqft Excluded: 0sqft

#		Dimensions	sqft	Counted as living area
10	Hall	12'9" x 4'6"	102 sq. ft	Yes
11	Bedroom	16'6" x 9'6"	171 sq. ft	Yes
12	Primary Bedroom	12'5" x 10'5"	130 sq. ft	Yes
13	Bath	6'4" x 4'10"	30 sq. ft	Yes
14	Bath	6'1" x 4'8"	29 sq. ft	Yes

8462 Everett Way, Timber Cove, Arvada, Jefferson County,
Colorado, United States, 80005, C

1 Floor 1 - Dining Area



Dimensions: 9'9" x 7'2"
Area: 69 sq. ft
Counted as living area: Yes

Heated: Yes
Finished: Yes
Enclosed: Yes
Contiguous: Yes
Permitted: Yes
Wet space: No
Addition: No
Conversion: No

2 Floor 1 - Foyer



Dimensions: 7'4" x 4'7"
Area: 34 sq. ft
Counted as living area: Yes

Heated: Yes
Finished: Yes
Enclosed: Yes
Contiguous: Yes
Permitted: Yes
Wet space: No
Addition: No
Conversion: No

8462 Everett Way, Timber Cove, Arvada, Jefferson County,
Colorado, United States, 80005, C

3 Floor 1 - Storage



Dimensions: 5'6" x 6'8"
Area: 37 sq. ft
Counted as living area: No

Heated: No
Finished: Yes
Enclosed: No
Contiguous: Yes
Permitted: Yes
Wet space: No
Addition: No
Conversion: No

4 Floor 1 - Bath



Dimensions: 5'0" x 6'8"
Area: 33 sq. ft
Counted as living area: Yes

Heated: Yes
Finished: Yes
Enclosed: Yes
Contiguous: Yes
Permitted: Yes
Wet space: Yes
Addition: No
Conversion: No

5 Floor 1 - Porch



Dimensions: 9'7" x 11'5"
Area: 104 sq. ft
Counted as living area: No

Heated: No
Finished: No
Enclosed: No
Contiguous: Yes
Permitted: Yes
Wet space: No
Addition: No
Conversion: No

8462 Everett Way, Timber Cove, Arvada, Jefferson County,
Colorado, United States, 80005, C

6 Floor 1 - Kitchen



Dimensions: 7'2" x 8'4"
Area: 60 sq. ft
Counted as living area: Yes

Heated: Yes
Finished: Yes
Enclosed: Yes
Contiguous: Yes
Permitted: Yes
Wet space: No
Addition: No
Conversion: No

7 Floor 1 - Garage



Dimensions: 21'3" x 10'0"
Area: 214 sq. ft
Counted as living area: No

Heated: No
Finished: No
Enclosed: Yes
Contiguous: Yes
Permitted: Yes
Wet space: No
Addition: No
Conversion: No

8 Floor 1 - Hall



Dimensions: 10'9" x 6'3"
Area: 93 sq. ft
Counted as living area: Yes

Heated: Yes
Finished: Yes
Enclosed: Yes
Contiguous: Yes
Permitted: Yes
Wet space: No
Addition: No
Conversion: No

8462 Everett Way, Timber Cove, Arvada, Jefferson County,
Colorado, United States, 80005, C

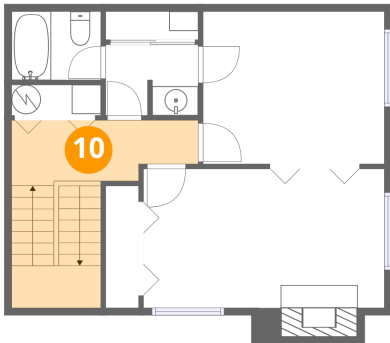
9 Floor 1 - Living Room



Dimensions: 19'5" x 13'1"
Area: 254 sq. ft
Counted as living area: Yes

Heated: Yes
Finished: Yes
Enclosed: Yes
Contiguous: Yes
Permitted: Yes
Wet space: No
Addition: No
Conversion: No

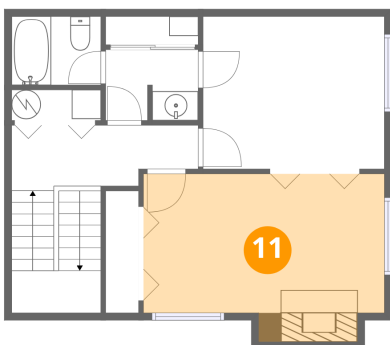
10 Floor 2 - Hall



Dimensions: 12'9" x 4'6"
Area: 102 sq. ft
Counted as living area: Yes

Heated: Yes
Finished: Yes
Enclosed: Yes
Contiguous: Yes
Permitted: Yes
Wet space: No
Addition: No
Conversion: No

11 Floor 2 - Bedroom

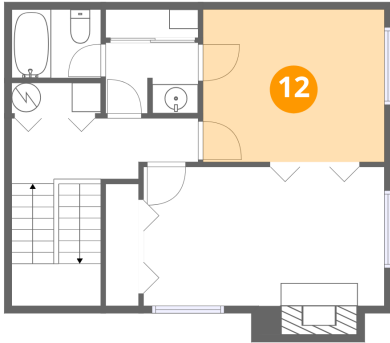


Dimensions: 16'6" x 9'6"
Area: 171 sq. ft
Counted as living area: Yes

Heated: Yes
Finished: Yes
Enclosed: Yes
Contiguous: Yes
Permitted: Yes
Wet space: No
Addition: No
Conversion: No

8462 Everett Way, Timber Cove, Arvada, Jefferson County,
Colorado, United States, 80005, C

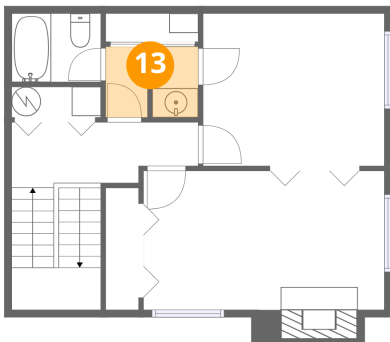
12 Floor 2 - Primary Bedroom



Dimensions: 12'5" x 10'5"
Area: 130 sq. ft
Counted as living area: Yes

Heated: Yes
Finished: Yes
Enclosed: Yes
Contiguous: Yes
Permitted: Yes
Wet space: No
Addition: No
Conversion: No

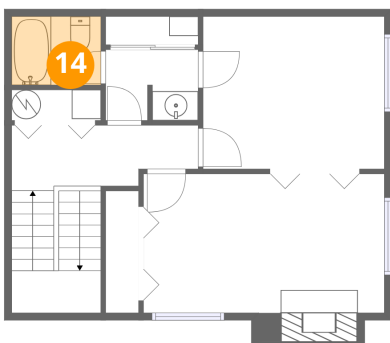
13 Floor 2 - Bath



Dimensions: 6'4" x 4'10"
Area: 30 sq. ft
Counted as living area: Yes

Heated: Yes
Finished: Yes
Enclosed: Yes
Contiguous: Yes
Permitted: Yes
Wet space: Yes
Addition: No
Conversion: No

14 Floor 2 - Bath



Dimensions: 6'1" x 4'8"
Area: 29 sq. ft
Counted as living area: Yes

Heated: Yes
Finished: Yes
Enclosed: Yes
Contiguous: Yes
Permitted: Yes
Wet space: Yes
Addition: No
Conversion: No