

Home report

11 Ventnor Way, Barrhaven, Nepean, Ontario, Canada, K2J 1M2



**Total Area: 1731 sq. ft**  
Below Ground: 677 sq. ft, Floor 2: 1054 sq. ft  
Excluded: Room 215 sq. ft, Utility 112 sq. ft, Embedded window 7 sq. ft, Walls: 138 sq. ft

Property summary

 **2** Floors

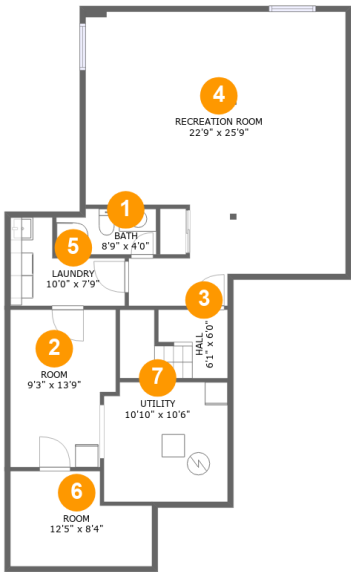
 **3** Bedrooms

 **2** Bathrooms

 **1** Half baths

Home report

11 Ventnor Way, Barrhaven, Nepean, Ontario, Canada, K2J 1M2



Room dimensions

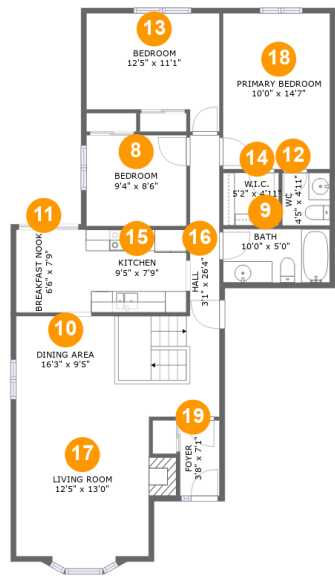
Floor 1 Below ground

Total:677sqft    Excluded: 327sqft

#		Max Dimensions	sqft	Included
1	Bath	8'9" x 4'0"	33 sq. ft	Yes
2	Room	9'3" x 13'9"	118 sq. ft	No
3	Hall	6'1" x 6'0"	55 sq. ft	Yes
4	Recreation Room	22'9" x 25'9"	498 sq. ft	Yes
5	Laundry	10'0" x 7'9"	55 sq. ft	Yes
6	Room	12'5" x 8'4"	90 sq. ft	No
7	Utility	10'10" x 10'6"	112 sq. ft	No

Home report

11 Ventnor Way, Barrhaven, Nepean, Ontario, Canada, K2J 1M2



Room dimensions

Floor 2

Total:1054sqft

Excluded: 7sqft

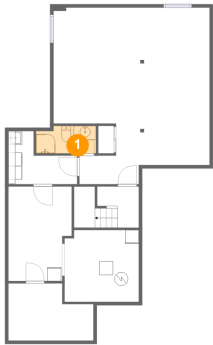
#		Max Dimensions	sqft	Included
8	Bedroom	9'4" x 8'6"	79 sq. ft	Yes
9	Bath	10'0" x 5'0"	50 sq. ft	Yes
10	Dining Area	16'3" x 9'5"	152 sq. ft	Yes
11	Breakfast Nook	6'6" x 7'9"	51 sq. ft	Yes
12	WC	4'5" x 4'11"	22 sq. ft	Yes
13	Bedroom	12'5" x 11'1"	117 sq. ft	Yes
14	W.I.C.	5'2" x 4'11"	26 sq. ft	Yes
15	Kitchen	9'5" x 7'9"	73 sq. ft	Yes
16	Hall	3'1" x 26'4"	73 sq. ft	Yes
17	Living Room	12'5" x 13'0"	171 sq. ft	Yes
18	Primary Bedroom	10'0" x 14'7"	145 sq. ft	Yes

Home report

11 Ventnor Way, Barrhaven, Nepean, Ontario, Canada, K2J 1M2

#		Max Dimensions	sqft	Included
19	Foyer	3'8" x 7'1"	26 sq. ft	Yes

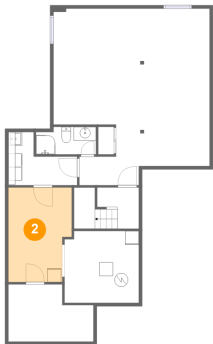
1 Floor 1 - Bath



Max Dimensions: 8'9" x 4'0"  
Calculated Area: 33 sq. ft  
Included: Yes

Heated: Yes  
Finished: Yes  
Enclosed: Yes  
Contiguous: Yes  
Permitted: Yes  
Wet space: Yes  
Addition: No  
Conversion: No

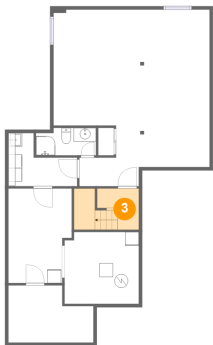
2 Floor 1 - Room



Max Dimensions: 9'3" x 13'9"  
Calculated Area: 118 sq. ft  
Included: No

Heated: Yes  
Finished: No  
Enclosed: Yes  
Contiguous: Yes  
Permitted: Yes  
Wet space: No  
Addition: No  
Conversion: No

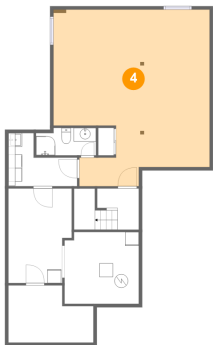
3 Floor 1 - Hall



Max Dimensions: 6'1" x 6'0"  
Calculated Area: 55 sq. ft  
Included: Yes

Heated: Yes  
Finished: Yes  
Enclosed: Yes  
Contiguous: Yes  
Permitted: Yes  
Wet space: No  
Addition: No  
Conversion: No

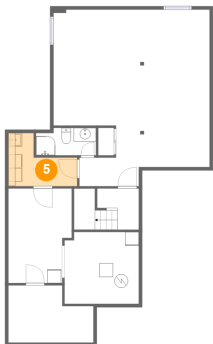
4 Floor 1 - Recreation Room



Max Dimensions: 22'9" x 25'9"  
Calculated Area: 498 sq. ft  
Included: Yes

Heated: Yes  
Finished: Yes  
Enclosed: Yes  
Contiguous: Yes  
Permitted: Yes  
Wet space: No  
Addition: No  
Conversion: No

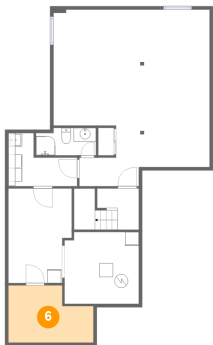
5 Floor 1 - Laundry



Max Dimensions: 10'0" x 7'9"  
Calculated Area: 55 sq. ft  
Included: Yes

Heated: Yes  
Finished: Yes  
Enclosed: Yes  
Contiguous: Yes  
Permitted: Yes  
Wet space: No  
Addition: No  
Conversion: No

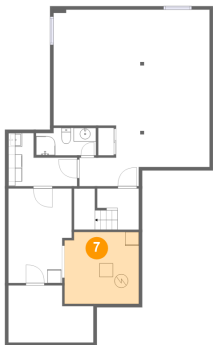
6 Floor 1 - Room



Max Dimensions: 12'5" x 8'4"  
Calculated Area: 90 sq. ft  
Included: No

Heated: Yes  
Finished: No  
Enclosed: Yes  
Contiguous: Yes  
Permitted: Yes  
Wet space: No  
Addition: No  
Conversion: No

7 Floor 1 - Utility



Max Dimensions: 10'10" x 10'6"  
Calculated Area: 112 sq. ft  
Included: No

Heated: Yes  
Finished: No  
Enclosed: Yes  
Contiguous: Yes  
Permitted: Yes  
Wet space: No  
Addition: No  
Conversion: No

8 Floor 2 - Bedroom



Max Dimensions: 9'4" x 8'6"  
Calculated Area: 79 sq. ft  
Included: Yes

Heated: Yes  
Finished: Yes  
Enclosed: Yes  
Contiguous: Yes  
Permitted: Yes  
Wet space: No  
Addition: No  
Conversion: No

9 Floor 2 - Bath



Max Dimensions: 10'0" x 5'0"  
Calculated Area: 50 sq. ft  
Included: Yes

Heated: Yes  
Finished: Yes  
Enclosed: Yes  
Contiguous: Yes  
Permitted: Yes  
Wet space: Yes  
Addition: No  
Conversion: No

10 Floor 2 - Dining Area



Max Dimensions: 16'3" x 9'5"  
Calculated Area: 152 sq. ft  
Included: Yes

Heated: Yes  
Finished: Yes  
Enclosed: Yes  
Contiguous: Yes  
Permitted: Yes  
Wet space: No  
Addition: No  
Conversion: No

11 Floor 2 - Breakfast Nook



Max Dimensions: 6'6" x 7'9"  
Calculated Area: 51 sq. ft  
Included: Yes

Heated: Yes  
Finished: Yes  
Enclosed: Yes  
Contiguous: Yes  
Permitted: Yes  
Wet space: No  
Addition: No  
Conversion: No



12 Floor 2 - WC



Max Dimensions: 4'5" x 4'11"  
Calculated Area: 22 sq. ft  
Included: Yes

Heated: Yes  
Finished: Yes  
Enclosed: Yes  
Contiguous: Yes  
Permitted: Yes  
Wet space: Yes  
Addition: No  
Conversion: No

13 Floor 2 - Bedroom



Max Dimensions: 12'5" x 11'1"  
Calculated Area: 117 sq. ft  
Included: Yes

Heated: Yes  
Finished: Yes  
Enclosed: Yes  
Contiguous: Yes  
Permitted: Yes  
Wet space: No  
Addition: No  
Conversion: No

14 Floor 2 - W.I.C.



Max Dimensions: 5'2" x 4'11"  
Calculated Area: 26 sq. ft  
Included: Yes

Heated: Yes  
Finished: Yes  
Enclosed: Yes  
Contiguous: Yes  
Permitted: Yes  
Wet space: No  
Addition: No  
Conversion: No

15 Floor 2 - Kitchen



Max Dimensions: 9'5" x 7'9"  
Calculated Area: 73 sq. ft  
Included: Yes

Heated: Yes  
Finished: Yes  
Enclosed: Yes  
Contiguous: Yes  
Permitted: Yes  
Wet space: No  
Addition: No  
Conversion: No

16 Floor 2 - Hall



Max Dimensions: 3'1" x 26'4"  
Calculated Area: 73 sq. ft  
Included: Yes

Heated: Yes  
Finished: Yes  
Enclosed: Yes  
Contiguous: Yes  
Permitted: Yes  
Wet space: No  
Addition: No  
Conversion: No

17 Floor 2 - Living Room



Max Dimensions: 12'5" x 13'0"  
Calculated Area: 171 sq. ft  
Included: Yes

Heated: Yes  
Finished: Yes  
Enclosed: Yes  
Contiguous: Yes  
Permitted: Yes  
Wet space: No  
Addition: No  
Conversion: No

18 Floor 2 - Primary Bedroom



Max Dimensions: 10'0" x 14'7"  
Calculated Area: 145 sq. ft  
Included: Yes

Heated: Yes  
Finished: Yes  
Enclosed: Yes  
Contiguous: Yes  
Permitted: Yes  
Wet space: No  
Addition: No  
Conversion: No

19 Floor 2 - Foyer



Max Dimensions: 3'8" x 7'1"  
Calculated Area: 26 sq. ft  
Included: Yes

Heated: Yes  
Finished: Yes  
Enclosed: Yes  
Contiguous: Yes  
Permitted: Yes  
Wet space: No  
Addition: No  
Conversion: No