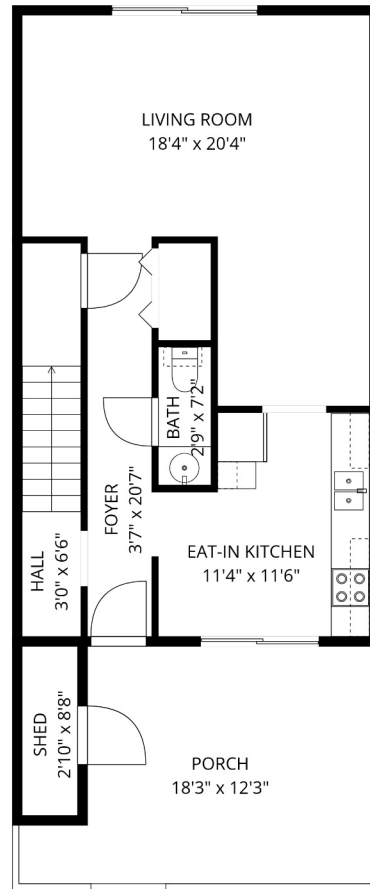
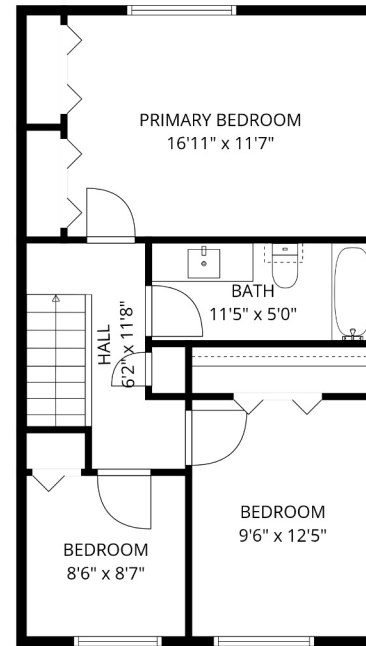


# Floor Plan



MAIN FLOOR



ABOVE MAIN

## Estimated Area:

Main Floor: 618 sq. ft

Above Main: 618 sq. ft

Total: 1236 sq. ft

9342 Hazel Street, 2  
Chilliwack, BC V2P 5N2



Lukas Matheson PREC

Cell: 604-819-7441

Office: 604-393-7880

Email: lukas@lukasmatheson.com

