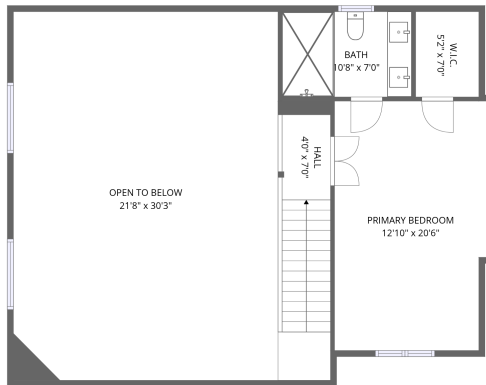
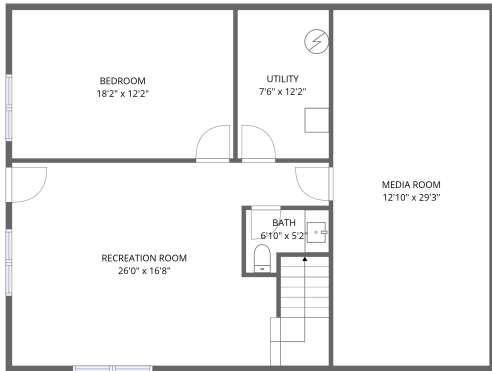


2nd floor



3rd floor



1st floor

Total Area: 2721 sq. ft

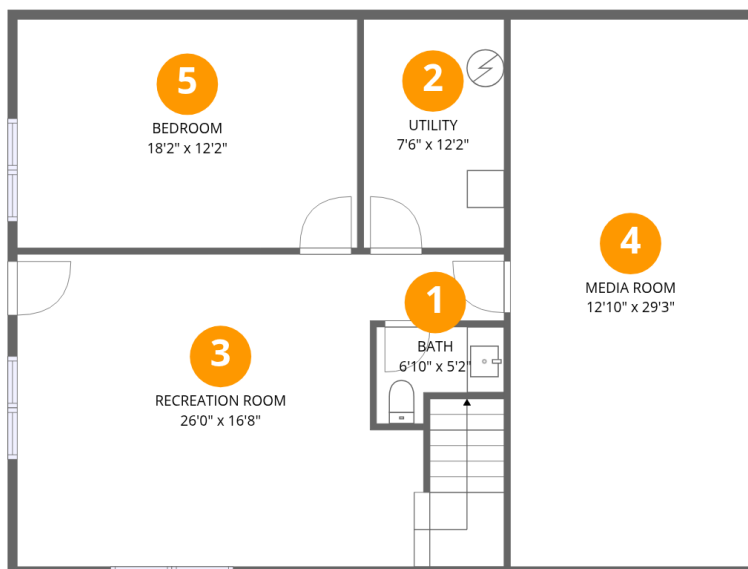
1st Floor: 1053 sq. ft, 2nd Floor: 1186 sq. ft, 3rd Floor: 482 sq. ft

Excluded: Utility 92 sq. ft, Open to below 657 sq. ft, Walls: 209 sq. ft

Property summary



**3024 Quarry Road, Port Austin Township, Port Austin,
Huron County, Michigan, United States, 48467**



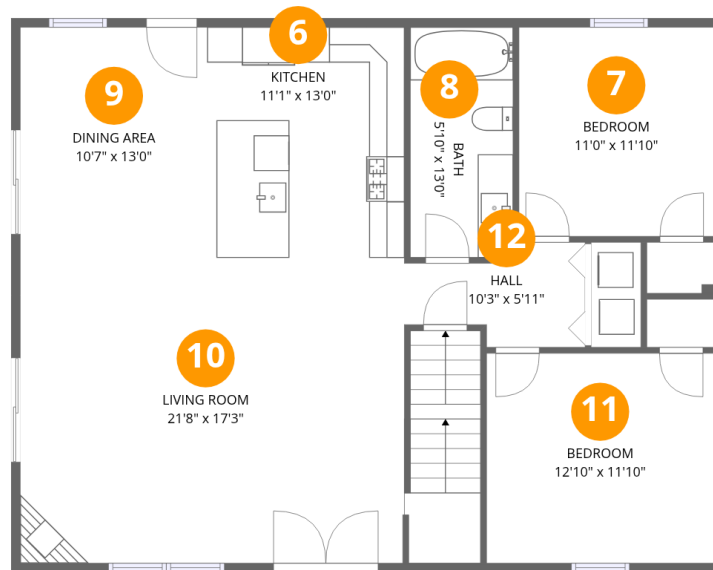
Room dimensions

Floor 1

Total:1053sqft Excluded: 92sqft

#		Dimensions	sqft	Counted as living area
1	Bath	6'10" x 5'2"	35 sq. ft	Yes
2	Utility	7'6" x 12'2"	92 sq. ft	No
3	Recreation Room	26'0" x 16'8"	434 sq. ft	Yes
4	Media Room	12'10" x 29'3"	375 sq. ft	Yes
5	Bedroom	18'2" x 12'2"	222 sq. ft	Yes

3024 Quarry Road, Port Austin Township, Port Austin, Huron County, Michigan, United States, 48467



Room dimensions

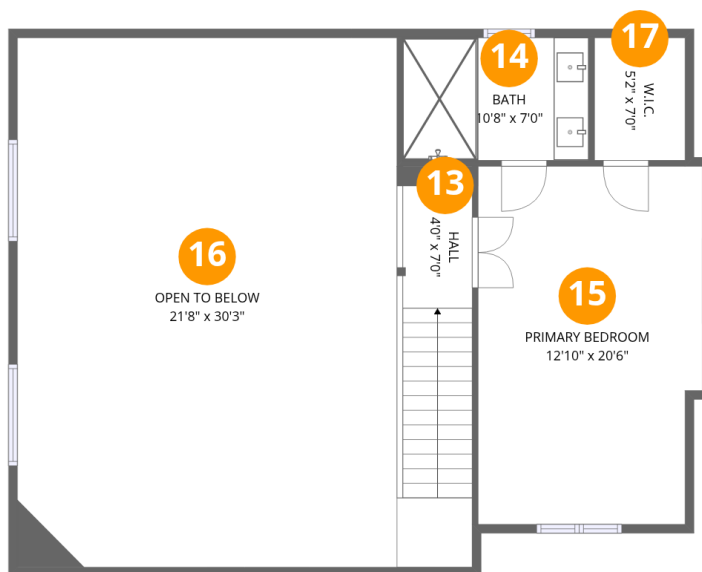
Floor 2

Total:1186sqft

Excluded: 0sqft

#		Dimensions	sqft	Counted as living area
6	Kitchen	11'1" x 13'0"	145 sq. ft	Yes
7	Bedroom	11'0" x 11'10"	130 sq. ft	Yes
8	Bath	5'10" x 13'0"	75 sq. ft	Yes
9	Dining Area	10'7" x 13'0"	137 sq. ft	Yes
10	Living Room	21'8" x 17'3"	375 sq. ft	Yes
11	Bedroom	12'10" x 11'10"	152 sq. ft	Yes
12	Hall	10'3" x 5'11"	61 sq. ft	Yes

**3024 Quarry Road, Port Austin Township, Port Austin,
Huron County, Michigan, United States, 48467**



Room dimensions

Floor 3

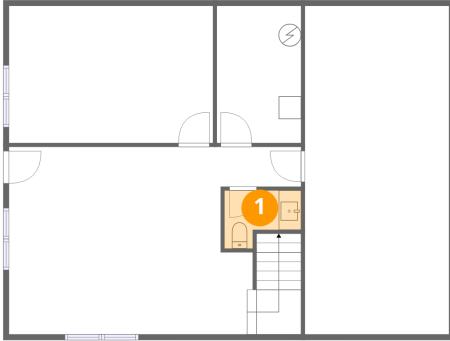
Total:482sqft

Excluded: 657sqft

#		Dimensions	sqft	Counted as living area
13	Hall	4'0" x 7'0"	28 sq. ft	Yes
14	Bath	10'8" x 7'0"	74 sq. ft	Yes
15	Primary Bedroom	12'10" x 20'6"	263 sq. ft	Yes
16	Open To Below	21'8" x 30'3"	657 sq. ft	No
17	W.I.C.	5'2" x 7'0"	36 sq. ft	Yes

**3024 Quarry Road, Port Austin Township, Port Austin,
Huron County, Michigan, United States, 48467**

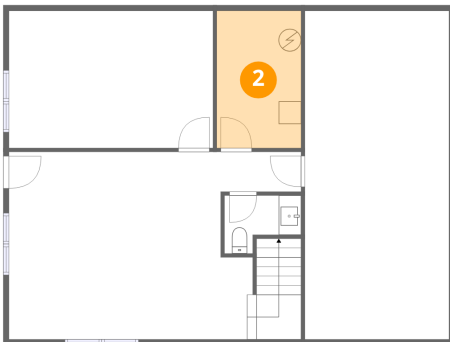
1 Floor 1 - Bath



Dimensions: 6'10" x 5'2"
Area: 35 sq. ft
Counted as living area: Yes

Heated: Yes
Finished: Yes
Enclosed: Yes
Contiguous: Yes
Permitted: Yes
Wet space: Yes
Addition: No
Conversion: No

2 Floor 1 - Utility

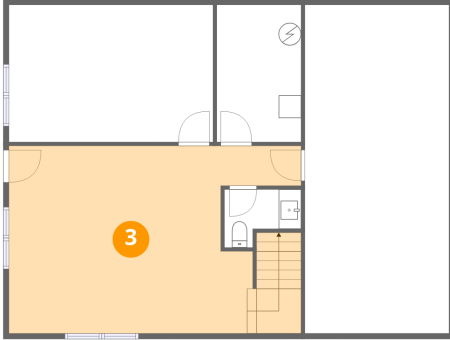


Dimensions: 7'6" x 12'2"
Area: 92 sq. ft
Counted as living area: No

Heated: Yes
Finished: No
Enclosed: Yes
Contiguous: Yes
Permitted: Yes
Wet space: No
Addition: No
Conversion: No

3024 Quarry Road, Port Austin Township, Port Austin,
Huron County, Michigan, United States, 48467

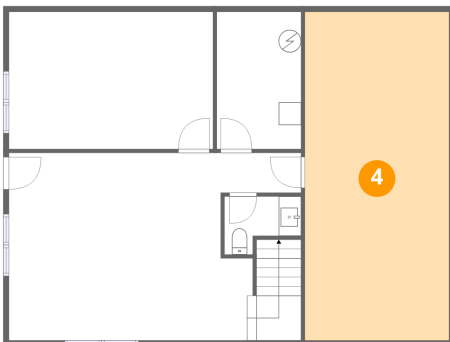
3 Floor 1 - Recreation Room



Dimensions: 26'0" x 16'8"
Area: 434 sq. ft
Counted as living area: Yes

Heated: Yes
Finished: Yes
Enclosed: Yes
Contiguous: Yes
Permitted: Yes
Wet space: No
Addition: No
Conversion: No

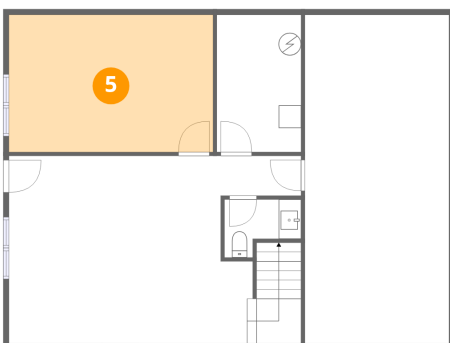
4 Floor 1 - Media Room



Dimensions: 12'10" x 29'3"
Area: 375 sq. ft
Counted as living area: Yes

Heated: Yes
Finished: Yes
Enclosed: Yes
Contiguous: Yes
Permitted: Yes
Wet space: No
Addition: No
Conversion: No

5 Floor 1 - Bedroom

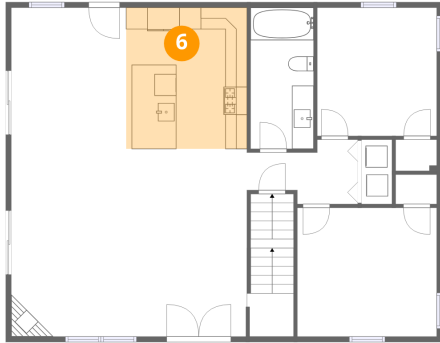


Dimensions: 18'2" x 12'2"
Area: 222 sq. ft
Counted as living area: Yes

Heated: Yes
Finished: Yes
Enclosed: Yes
Contiguous: Yes
Permitted: Yes
Wet space: No
Addition: No
Conversion: No

3024 Quarry Road, Port Austin Township, Port Austin,
Huron County, Michigan, United States, 48467

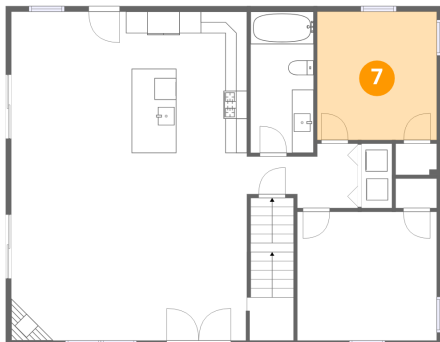
6 Floor 2 - Kitchen



Dimensions: 11'1" x 13'0"
Area: 145 sq. ft
Counted as living area: Yes

Heated: Yes
Finished: Yes
Enclosed: Yes
Contiguous: Yes
Permitted: Yes
Wet space: No
Addition: No
Conversion: No

7 Floor 2 - Bedroom



Dimensions: 11'0" x 11'10"
Area: 130 sq. ft
Counted as living area: Yes

Heated: Yes
Finished: Yes
Enclosed: Yes
Contiguous: Yes
Permitted: Yes
Wet space: No
Addition: No
Conversion: No

8 Floor 2 - Bath



Dimensions: 5'10" x 13'0"
Area: 75 sq. ft
Counted as living area: Yes

Heated: Yes
Finished: Yes
Enclosed: Yes
Contiguous: Yes
Permitted: Yes
Wet space: Yes
Addition: No
Conversion: No

3024 Quarry Road, Port Austin Township, Port Austin,
Huron County, Michigan, United States, 48467

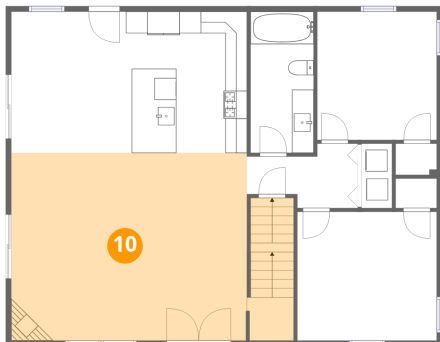
9 Floor 2 - Dining Area



Dimensions: 10'7" x 13'0"
Area: 137 sq. ft
Counted as living area: Yes

Heated: Yes
Finished: Yes
Enclosed: Yes
Contiguous: Yes
Permitted: Yes
Wet space: No
Addition: No
Conversion: No

10 Floor 2 - Living Room



Dimensions: 21'8" x 17'3"
Area: 375 sq. ft
Counted as living area: Yes

Heated: Yes
Finished: Yes
Enclosed: Yes
Contiguous: Yes
Permitted: Yes
Wet space: No
Addition: No
Conversion: No

11 Floor 2 - Bedroom

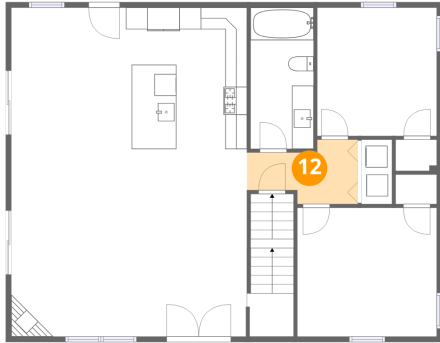


Dimensions: 12'10" x 11'10"
Area: 152 sq. ft
Counted as living area: Yes

Heated: Yes
Finished: Yes
Enclosed: Yes
Contiguous: Yes
Permitted: Yes
Wet space: No
Addition: No
Conversion: No

3024 Quarry Road, Port Austin Township, Port Austin,
Huron County, Michigan, United States, 48467

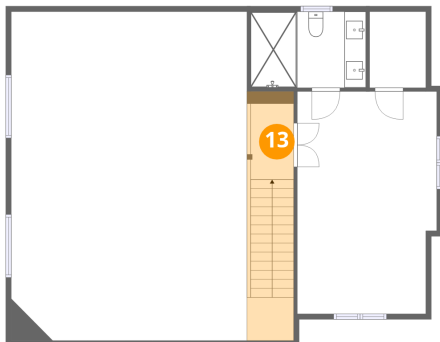
12 Floor 2 - Hall



Dimensions: 10'3" x 5'11"
Area: 61 sq. ft
Counted as living area: Yes

Heated: Yes
Finished: Yes
Enclosed: Yes
Contiguous: Yes
Permitted: Yes
Wet space: No
Addition: No
Conversion: No

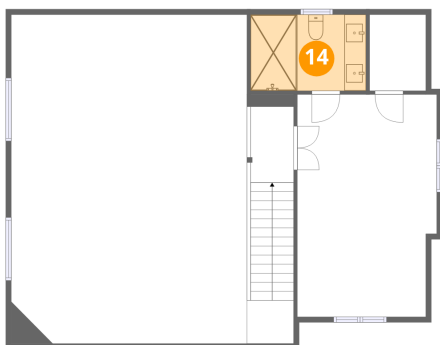
13 Floor 3 - Hall



Dimensions: 4'0" x 7'0"
Area: 28 sq. ft
Counted as living area: Yes

Heated: Yes
Finished: Yes
Enclosed: Yes
Contiguous: Yes
Permitted: Yes
Wet space: No
Addition: No
Conversion: No

14 Floor 3 - Bath

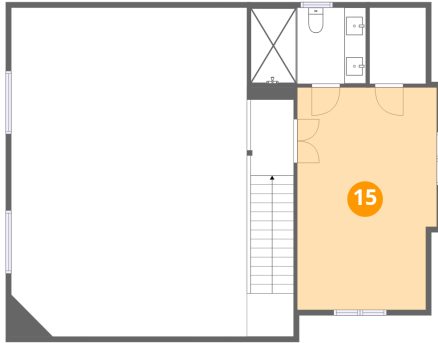


Dimensions: 10'8" x 7'0"
Area: 74 sq. ft
Counted as living area: Yes

Heated: Yes
Finished: Yes
Enclosed: Yes
Contiguous: Yes
Permitted: Yes
Wet space: Yes
Addition: No
Conversion: No

3024 Quarry Road, Port Austin Township, Port Austin,
Huron County, Michigan, United States, 48467

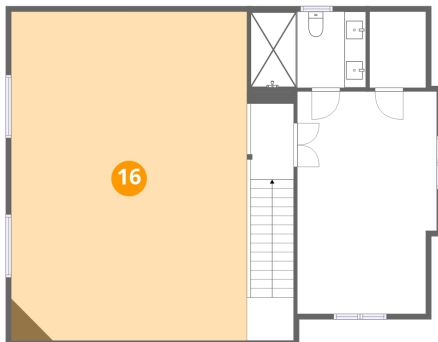
15 Floor 3 - Primary Bedroom



Dimensions: 12'10" x 20'6"
Area: 263 sq. ft
Counted as living area: Yes

Heated: Yes
Finished: Yes
Enclosed: Yes
Contiguous: Yes
Permitted: Yes
Wet space: No
Addition: No
Conversion: No

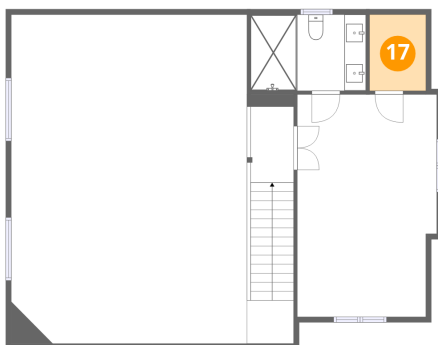
16 Floor 3 - Open To Below



Dimensions: 21'8" x 30'3"
Area: 657 sq. ft
Counted as living area: No

Heated: No
Finished: No
Enclosed: No
Contiguous: Yes
Permitted: No
Wet space: No
Addition: No
Conversion: No

17 Floor 3 - W.I.C.



Dimensions: 5'2" x 7'0"
Area: 36 sq. ft
Counted as living area: Yes

Heated: Yes
Finished: Yes
Enclosed: Yes
Contiguous: Yes
Permitted: Yes
Wet space: No
Addition: No
Conversion: No