

Home data report

7042 Autumn Wood Dr, Brighton, MI, US




Total Area: 2773 sq. ft

Basement: 790 sq. ft, 1st Floor: 1031 sq. ft, 2nd Floor: 952 sq. ft

Excluded: Utility 183 sq. ft, Open to below 334 sq. ft, Walls: 263 sq. ft

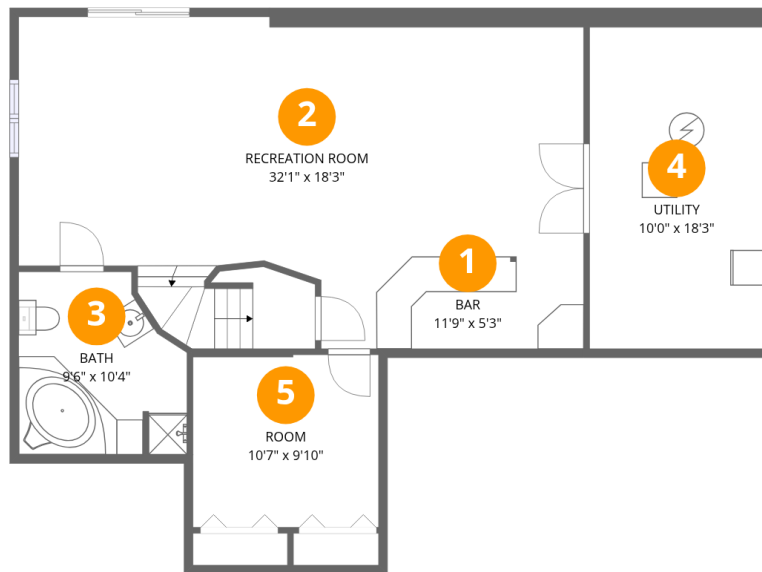
Property summary

 **3** Floors

 **3** Bedrooms

 **3** Bathrooms

 **1** Half baths



Room dimensions

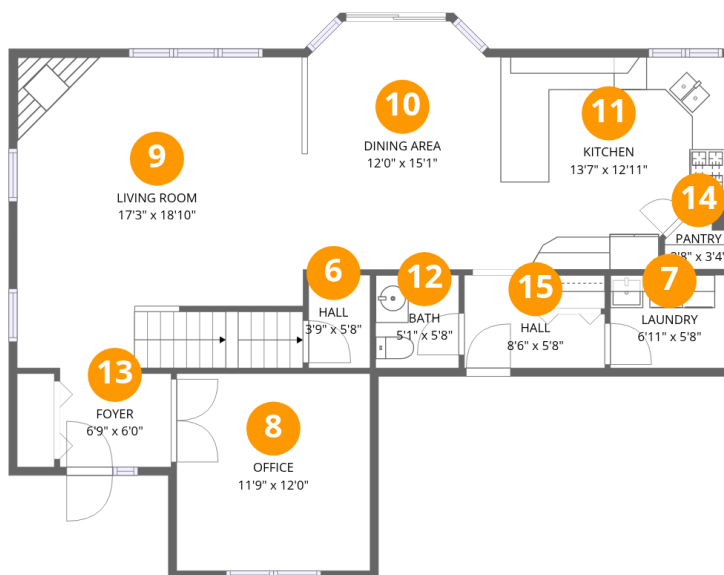
Floor 1 Below grade

Total: 790 sqft

Excluded: 183 sqft

#		Dimensions	sqft	Counted as living area
1	Bar	11'9" x 5'3"	61 sq. ft	Yes
2	Recreation Room	32'1" x 18'3"	585 sq. ft	Yes
3	Bath	9'6" x 10'4"	99 sq. ft	Yes
4	Utility	10'0" x 18'3"	183 sq. ft	No
5	Room	10'7" x 9'10"	104 sq. ft	Yes

7042 Autumn Wood Dr, Brighton, MI, US

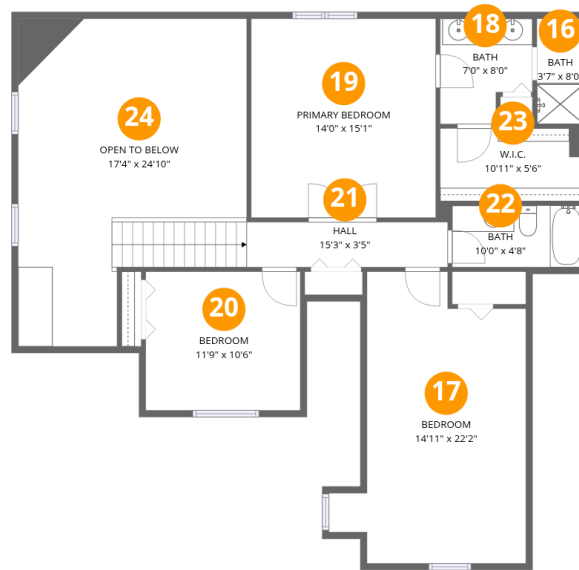


Room dimensions

Floor 2

Total: 1031 sqft Excluded: 0 sqft

#		Dimensions	sqft	Counted as living area
6	Hall	3'9" x 5'8"	21 sq. ft	Yes
7	Laundry	6'11" x 5'8"	39 sq. ft	Yes
8	Office	11'9" x 12'0"	140 sq. ft	Yes
9	Living Room	17'3" x 18'10"	325 sq. ft	Yes
10	Dining Area	12'0" x 15'1"	181 sq. ft	Yes
11	Kitchen	13'7" x 12'11"	175 sq. ft	Yes
12	Bath	5'1" x 5'8"	28 sq. ft	Yes
13	Foyer	6'9" x 6'0"	40 sq. ft	Yes
14	Pantry	3'8" x 3'4"	12 sq. ft	Yes
15	Hall	8'6" x 5'8"	48 sq. ft	Yes



Room dimensions

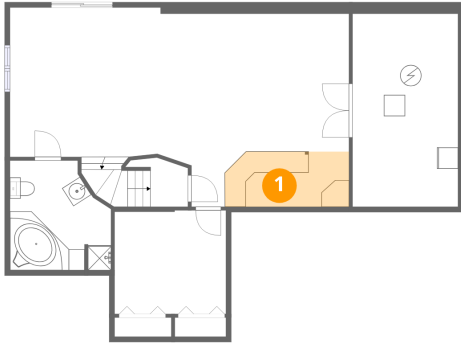
Floor 3

Total:952sqft

Excluded: 334sqft

#		Dimensions	sqft	Counted as living area
16	Bath	3'7" x 8'0"	29 sq. ft	Yes
17	Bedroom	14'11" x 22'2"	331 sq. ft	Yes
18	Bath	7'0" x 8'0"	56 sq. ft	Yes
19	Primary Bedroom	14'0" x 15'1"	212 sq. ft	Yes
20	Bedroom	11'9" x 10'6"	124 sq. ft	Yes
21	Hall	15'3" x 3'5"	52 sq. ft	Yes
22	Bath	10'0" x 4'8"	47 sq. ft	Yes
23	W.I.C.	10'11" x 5'6"	60 sq. ft	Yes
24	Open To Below	17'4" x 24'10"	431 sq. ft	No

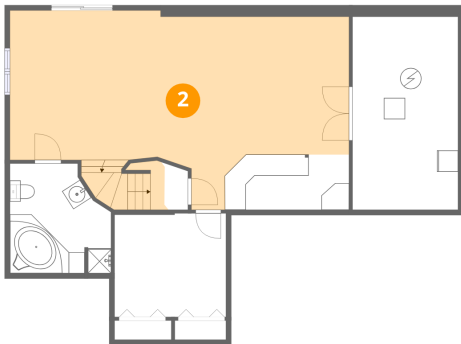
1 Floor 1 - Bar



Dimensions: 11'9" x 5'3"
Area: 61 sq. ft
Counted as living area: Yes

Heated: Yes
Finished: Yes
Enclosed: Yes
Contiguous: Yes
Permitted: Yes
Wet space: No
Addition: No
Conversion: No

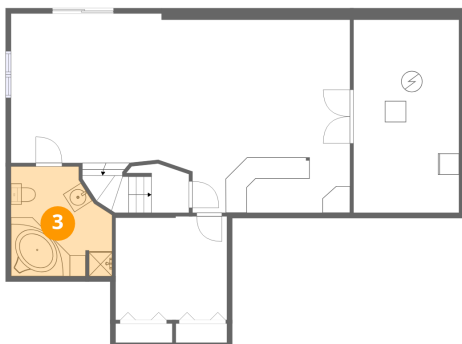
2 Floor 1 - Recreation Room



Dimensions: 32'1" x 18'3"
Area: 585 sq. ft
Counted as living area: Yes

Heated: Yes
Finished: Yes
Enclosed: Yes
Contiguous: Yes
Permitted: Yes
Wet space: No
Addition: No
Conversion: No

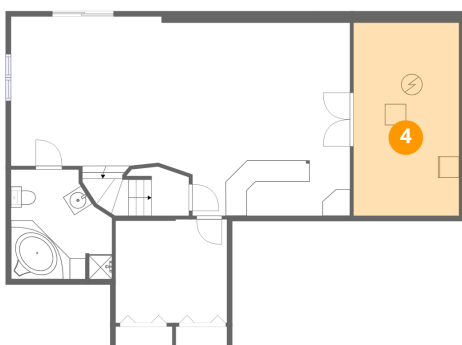
3 Floor 1 - Bath



Dimensions: 9'6" x 10'4"
Area: 99 sq. ft
Counted as living area: Yes

Heated: Yes
Finished: Yes
Enclosed: Yes
Contiguous: Yes
Permitted: Yes
Wet space: Yes
Addition: No
Conversion: No

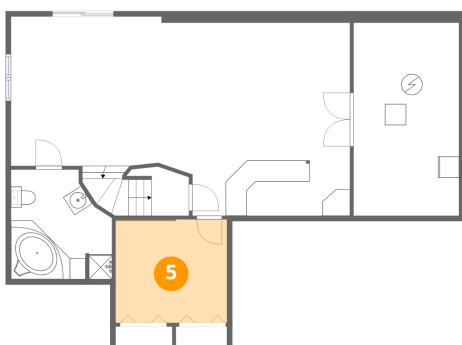
4 Floor 1 - Utility



Dimensions: 10'0" x 18'3"
Area: 183 sq. ft
Counted as living area: No

Heated: Yes
Finished: No
Enclosed: Yes
Contiguous: Yes
Permitted: Yes
Wet space: No
Addition: No
Conversion: No

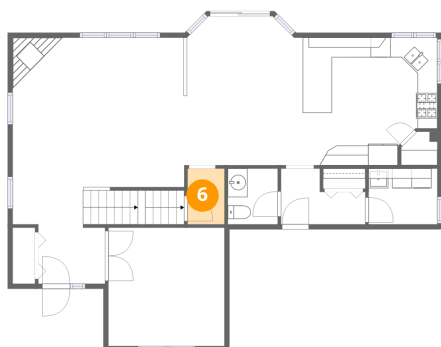
5 Floor 1 - Room



Dimensions: 10'7" x 9'10"
Area: 104 sq. ft
Counted as living area: Yes

Heated: Yes
Finished: Yes
Enclosed: Yes
Contiguous: Yes
Permitted: Yes
Wet space: No
Addition: No
Conversion: No

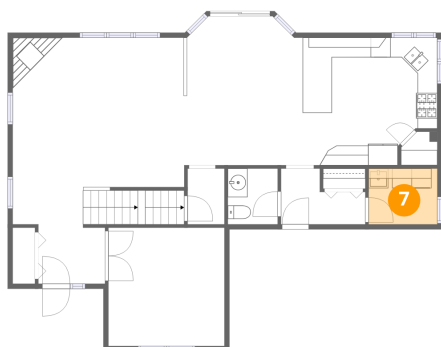
6 Floor 2 - Hall



Dimensions: 3'9" x 5'8"
Area: 21 sq. ft
Counted as living area: Yes

Heated: Yes
Finished: Yes
Enclosed: Yes
Contiguous: Yes
Permitted: Yes
Wet space: No
Addition: No
Conversion: No

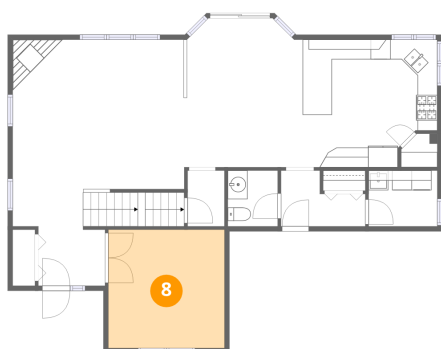
7 Floor 2 - Laundry



Dimensions: 6'11" x 5'8"
Area: 39 sq. ft
Counted as living area: Yes

Heated: Yes
Finished: Yes
Enclosed: Yes
Contiguous: Yes
Permitted: Yes
Wet space: No
Addition: No
Conversion: No

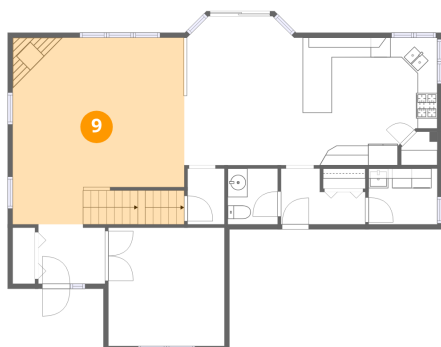
8 Floor 2 - Office



Dimensions: 11'9" x 12'0"
Area: 140 sq. ft
Counted as living area: Yes

Heated: Yes
Finished: Yes
Enclosed: Yes
Contiguous: Yes
Permitted: Yes
Wet space: No
Addition: No
Conversion: No

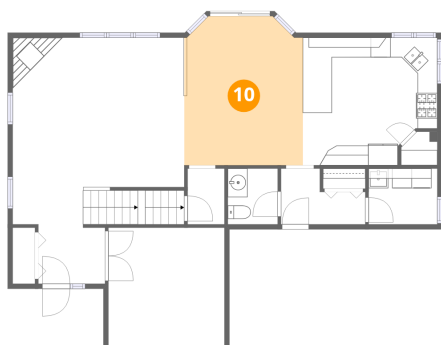
9 Floor 2 - Living Room



Dimensions: 17'3" x 18'10"
Area: 325 sq. ft
Counted as living area: Yes

Heated: Yes
Finished: Yes
Enclosed: Yes
Contiguous: Yes
Permitted: Yes
Wet space: No
Addition: No
Conversion: No

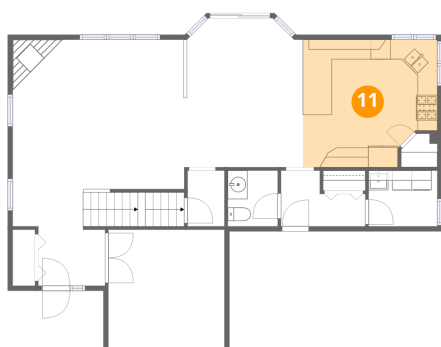
10 Floor 2 - Dining Area



Dimensions: 12'0" x 15'1"
Area: 181 sq. ft
Counted as living area: Yes

Heated: Yes
Finished: Yes
Enclosed: Yes
Contiguous: Yes
Permitted: Yes
Wet space: No
Addition: No
Conversion: No

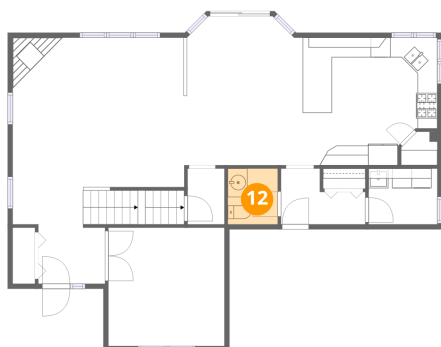
11 Floor 2 - Kitchen



Dimensions: 13'7" x 12'11"
Area: 175 sq. ft
Counted as living area: Yes

Heated: Yes
Finished: Yes
Enclosed: Yes
Contiguous: Yes
Permitted: Yes
Wet space: No
Addition: No
Conversion: No

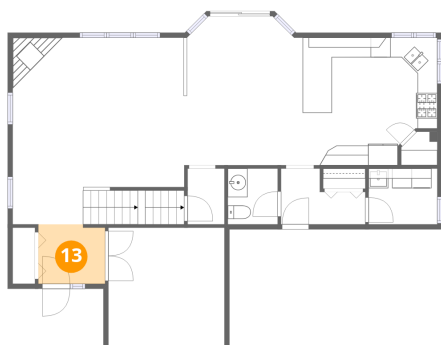
12 Floor 2 - Bath



Dimensions: 5'1" x 5'8"
Area: 28 sq. ft
Counted as living area: Yes

Heated: Yes
Finished: Yes
Enclosed: Yes
Contiguous: Yes
Permitted: Yes
Wet space: Yes
Addition: No
Conversion: No

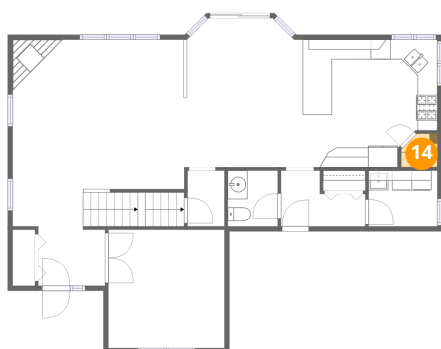
13 Floor 2 - Foyer



Dimensions: 6'9" x 6'0"
Area: 40 sq. ft
Counted as living area: Yes

Heated: Yes
Finished: Yes
Enclosed: Yes
Contiguous: Yes
Permitted: Yes
Wet space: No
Addition: No
Conversion: No

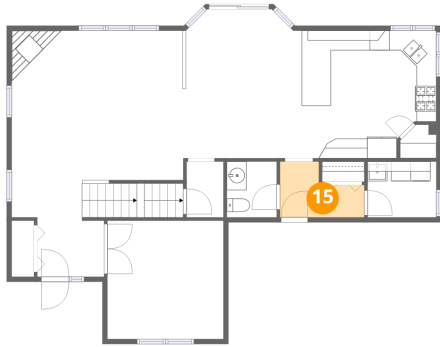
14 Floor 2 - Pantry



Dimensions: 3'8" x 3'4"
Area: 12 sq. ft
Counted as living area: Yes

Heated: Yes
Finished: Yes
Enclosed: Yes
Contiguous: Yes
Permitted: Yes
Wet space: No
Addition: No
Conversion: No

15 Floor 2 - Hall



Dimensions: 8'6" x 5'8"
Area: 48 sq. ft
Counted as living area: Yes

Heated: Yes
Finished: Yes
Enclosed: Yes
Contiguous: Yes
Permitted: Yes
Wet space: No
Addition: No
Conversion: No

16 Floor 3 - Bath



Dimensions: 3'7" x 8'0"
Area: 29 sq. ft
Counted as living area: Yes

Heated: Yes
Finished: Yes
Enclosed: Yes
Contiguous: Yes
Permitted: Yes
Wet space: Yes
Addition: No
Conversion: No

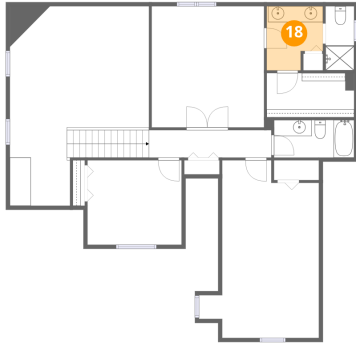
17 Floor 3 - Bedroom



Dimensions: 14'11" x 22'2"
Area: 331 sq. ft
Counted as living area: Yes

Heated: Yes
Finished: Yes
Enclosed: Yes
Contiguous: Yes
Permitted: Yes
Wet space: No
Addition: No
Conversion: No

18 Floor 3 - Bath



Dimensions: 7'0" x 8'0"
Area: 56 sq. ft
Counted as living area: Yes

Heated: Yes
Finished: Yes
Enclosed: Yes
Contiguous: Yes
Permitted: Yes
Wet space: Yes
Addition: No
Conversion: No

19 Floor 3 - Primary Bedroom



Dimensions: 14'0" x 15'1"
Area: 212 sq. ft
Counted as living area: Yes

Heated: Yes
Finished: Yes
Enclosed: Yes
Contiguous: Yes
Permitted: Yes
Wet space: No
Addition: No
Conversion: No

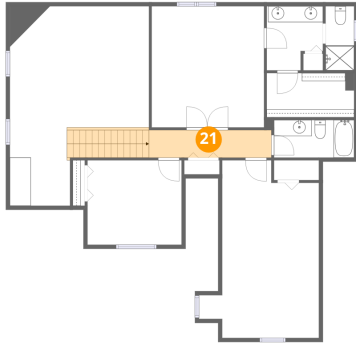
20 Floor 3 - Bedroom



Dimensions: 11'9" x 10'6"
Area: 124 sq. ft
Counted as living area: Yes

Heated: Yes
Finished: Yes
Enclosed: Yes
Contiguous: Yes
Permitted: Yes
Wet space: No
Addition: No
Conversion: No

21 Floor 3 - Hall



Dimensions: 15'3" x 3'5"
Area: 52 sq. ft
Counted as living area: Yes

Heated: Yes
Finished: Yes
Enclosed: Yes
Contiguous: Yes
Permitted: Yes
Wet space: No
Addition: No
Conversion: No

22 Floor 3 - Bath



Dimensions: 10'0" x 4'8"
Area: 47 sq. ft
Counted as living area: Yes

Heated: Yes
Finished: Yes
Enclosed: Yes
Contiguous: Yes
Permitted: Yes
Wet space: Yes
Addition: No
Conversion: No

23 Floor 3 - W.I.C.



Dimensions: 10'11" x 5'6"
Area: 60 sq. ft
Counted as living area: Yes

Heated: Yes
Finished: Yes
Enclosed: Yes
Contiguous: Yes
Permitted: Yes
Wet space: No
Addition: No
Conversion: No

24 Floor 3 - Open To Below



Dimensions: 17'4" x 24'10"
Area: 431 sq. ft
Counted as living area: No

Heated: No
Finished: No
Enclosed: No
Contiguous: Yes
Permitted: No
Wet space: No
Addition: No
Conversion: No