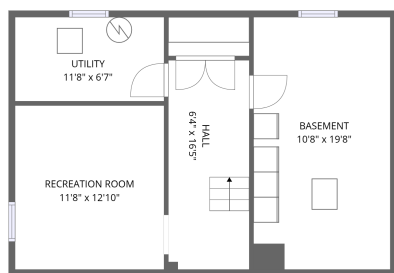
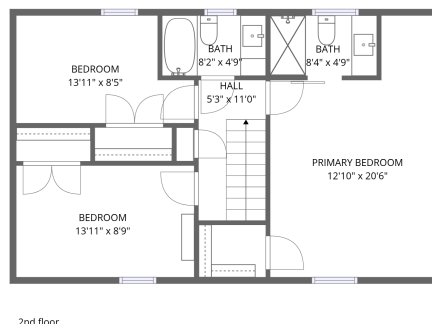
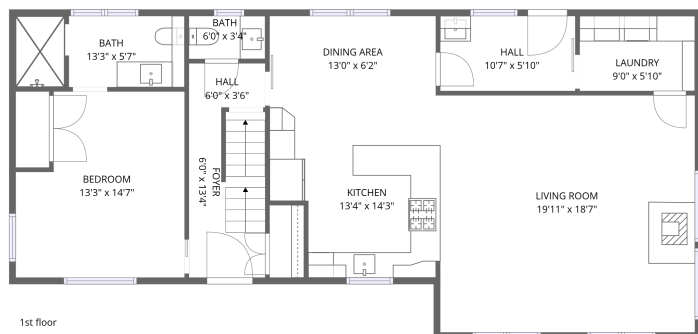


Home data report

**9636 Second Line Nassagaweya, Campbellville, Halton County,
Ontario, Canada, L0P 1B0, 9658 Second Line Nassagaweya**



Total Area: 2139 sq. ft

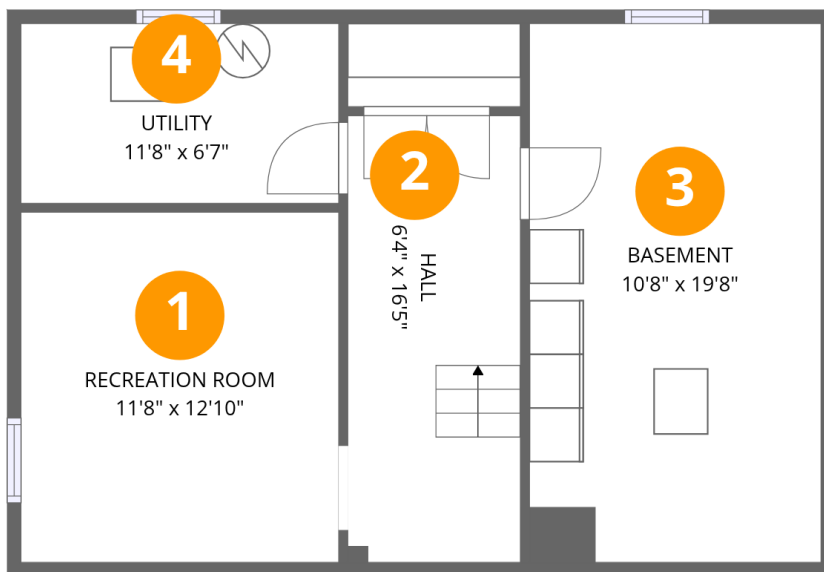
Below Ground: 292 sq. ft, 1st Floor: 1176 sq. ft, 2nd Floor: 671 sq. ft

Excluded: Basement 212 sq. ft, Utility 77 sq. ft, Walls: 183 sq. ft

Property summary



9636 Second Line Nassagaweya, Campbellville, Halton County, Ontario, Canada, L0P 1B0, 9658 Second Line Nassagaweya



Room dimensions

Floor 1 Below grade

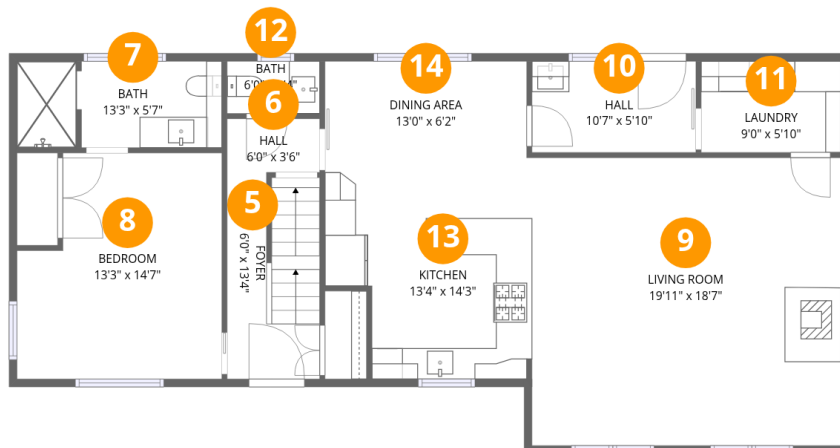
Total:292sqft

Excluded: 289sqft

#		Dimensions	sqft	Counted as living area
1	Recreation Room	11'8" x 12'10"	150 sq. ft	Yes
2	Hall	6'4" x 16'5"	104 sq. ft	Yes
3	Basement	10'8" x 19'8"	212 sq. ft	No
4	Utility	11'8" x 6'7"	77 sq. ft	No

Home data report

9636 Second Line Nassagaweya, Campbellville, Halton County, Ontario, Canada, L0P 1B0, 9658 Second Line Nassagaweya



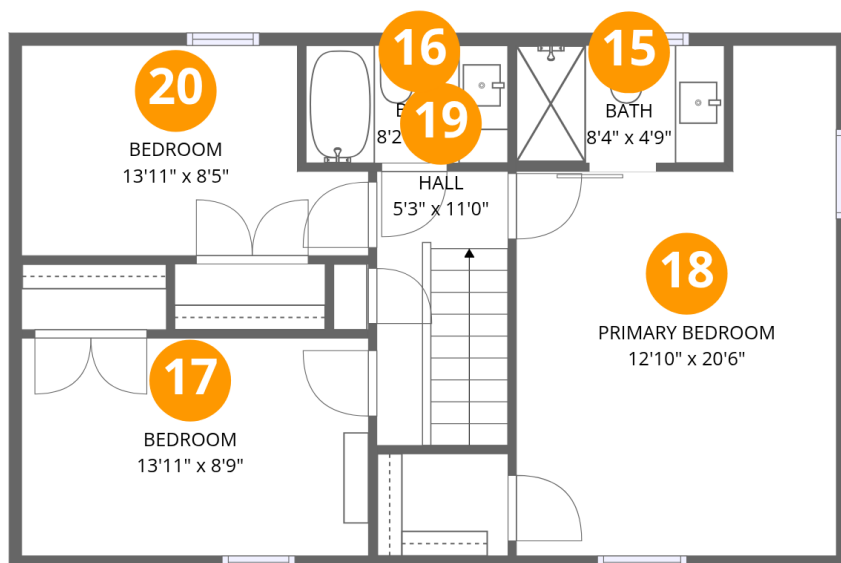
Room dimensions

Floor 2

Total:1176sqft Excluded: 0sqft

#		Dimensions	sqft	Counted as living area
5	Foyer	6'0" x 13'4"	77 sq. ft	Yes
6	Hall	6'0" x 3'6"	21 sq. ft	Yes
7	Bath	13'3" x 5'7"	73 sq. ft	Yes
8	Bedroom	13'3" x 14'7"	174 sq. ft	Yes
9	Living Room	19'11" x 18'7"	371 sq. ft	Yes
10	Hall	10'7" x 5'10"	62 sq. ft	Yes
11	Laundry	9'0" x 5'10"	53 sq. ft	Yes
12	Bath	6'0" x 3'4"	20 sq. ft	Yes
13	Kitchen	13'4" x 14'3"	172 sq. ft	Yes
14	Dining Area	13'0" x 6'2"	81 sq. ft	Yes

9636 Second Line Nassagaweya, Campbellville, Halton County, Ontario, Canada, L0P 1B0, 9658 Second Line Nassagaweya



Room dimensions

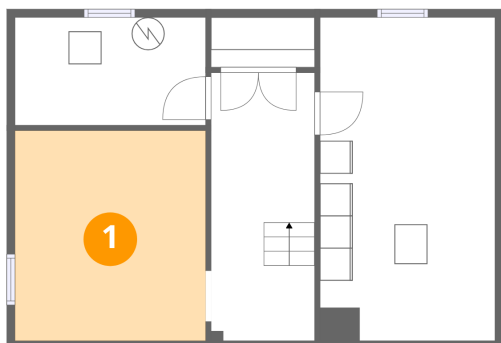
Floor 3

Total:671sqft Excluded: 0sqft

#		Dimensions	sqft	Counted as living area
15	Bath	8'4" x 4'9"	40 sq. ft	Yes
16	Bath	8'2" x 4'9"	38 sq. ft	Yes
17	Bedroom	13'11" x 8'9"	122 sq. ft	Yes
18	Primary Bedroom	12'10" x 20'6"	220 sq. ft	Yes
19	Hall	5'3" x 11'0"	58 sq. ft	Yes
20	Bedroom	13'11" x 8'5"	103 sq. ft	Yes

9636 Second Line Nassagaweya, Campbellville, Halton County,
Ontario, Canada, L0P 1B0, 9658 Second Line Nassagaweya

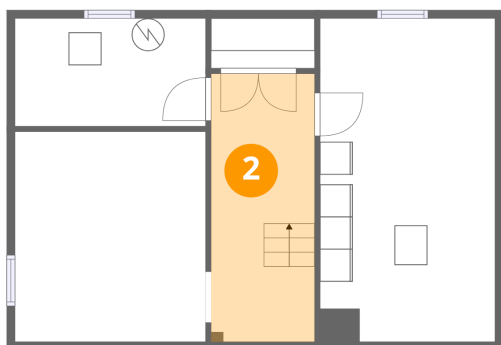
1 Floor 1 - Recreation Room



Dimensions: 11'8" x 12'10"
Area: 150 sq. ft
Counted as living area: Yes

Heated: Yes
Finished: Yes
Enclosed: Yes
Contiguous: Yes
Permitted: Yes
Wet space: No
Addition: No
Conversion: No

2 Floor 1 - Hall

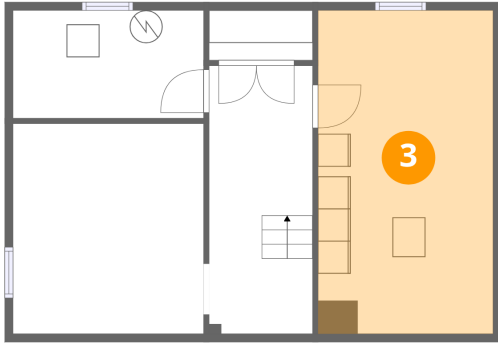


Dimensions: 6'4" x 16'5"
Area: 104 sq. ft
Counted as living area: Yes

Heated: Yes
Finished: Yes
Enclosed: Yes
Contiguous: Yes
Permitted: Yes
Wet space: No
Addition: No
Conversion: No

9636 Second Line Nassagaweya, Campbellville, Halton County,
Ontario, Canada, L0P 1B0, 9658 Second Line Nassagaweya

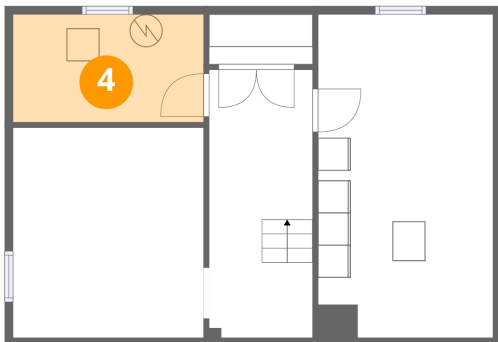
3 Floor 1 - Basement



Dimensions: 10'8" x 19'8"
Area: 212 sq. ft
Counted as living area: No

Heated: Yes
Finished: No
Enclosed: Yes
Contiguous: Yes
Permitted: Yes
Wet space: No
Addition: No
Conversion: No

4 Floor 1 - Utility



Dimensions: 11'8" x 6'7"
Area: 77 sq. ft
Counted as living area: No

Heated: Yes
Finished: No
Enclosed: Yes
Contiguous: Yes
Permitted: Yes
Wet space: No
Addition: No
Conversion: No

5 Floor 2 - Foyer

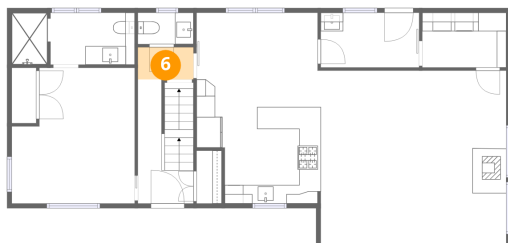


Dimensions: 6'0" x 13'4"
Area: 77 sq. ft
Counted as living area: Yes

Heated: Yes
Finished: Yes
Enclosed: Yes
Contiguous: Yes
Permitted: Yes
Wet space: No
Addition: No
Conversion: No

9636 Second Line Nassagaweya, Campbellville, Halton County, Ontario, Canada, L0P 1B0, 9658 Second Line Nassagaweya

6 Floor 2 - Hall



Dimensions: 6'0" x 3'6"
Area: 21 sq. ft
Counted as living area: Yes

Heated: Yes
Finished: Yes
Enclosed: Yes
Contiguous: Yes
Permitted: Yes
Wet space: No
Addition: No
Conversion: No

7 Floor 2 - Bath



Dimensions: 13'3" x 5'7"
Area: 73 sq. ft
Counted as living area: Yes

Heated: Yes
Finished: Yes
Enclosed: Yes
Contiguous: Yes
Permitted: Yes
Wet space: Yes
Addition: No
Conversion: No

8 Floor 2 - Bedroom

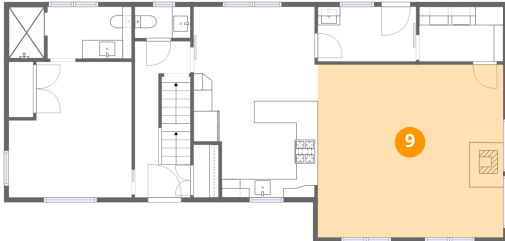


Dimensions: 13'3" x 14'7"
Area: 174 sq. ft
Counted as living area: Yes

Heated: Yes
Finished: Yes
Enclosed: Yes
Contiguous: Yes
Permitted: Yes
Wet space: No
Addition: No
Conversion: No

**9636 Second Line Nassagaweya, Campbellville, Halton County,
Ontario, Canada, L0P 1B0, 9658 Second Line Nassagaweya**

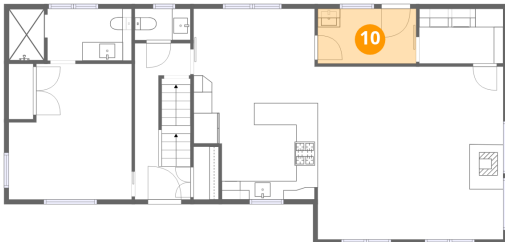
9 Floor 2 - Living Room



Dimensions: 19'11" x 18'7"
Area: 371 sq. ft
Counted as living area: Yes

Heated: Yes
Finished: Yes
Enclosed: Yes
Contiguous: Yes
Permitted: Yes
Wet space: No
Addition: No
Conversion: No

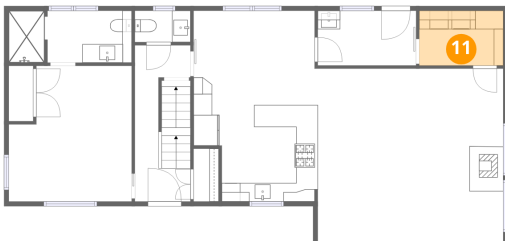
10 Floor 2 - Hall



Dimensions: 10'7" x 5'10"
Area: 62 sq. ft
Counted as living area: Yes

Heated: Yes
Finished: Yes
Enclosed: Yes
Contiguous: Yes
Permitted: Yes
Wet space: No
Addition: No
Conversion: No

11 Floor 2 - Laundry

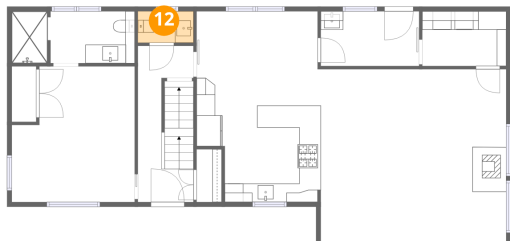


Dimensions: 9'0" x 5'10"
Area: 53 sq. ft
Counted as living area: Yes

Heated: Yes
Finished: Yes
Enclosed: Yes
Contiguous: Yes
Permitted: Yes
Wet space: No
Addition: No
Conversion: No

9636 Second Line Nassagaweya, Campbellville, Halton County, Ontario, Canada, L0P 1B0, 9658 Second Line Nassagaweya

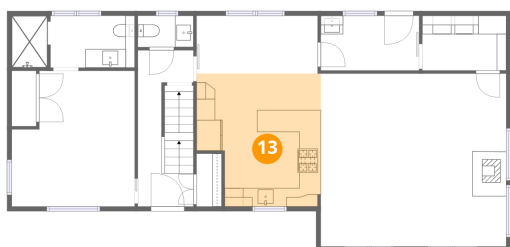
12 Floor 2 - Bath



Dimensions: 6'0" x 3'4"
Area: 20 sq. ft
Counted as living area: Yes

Heated: Yes
Finished: Yes
Enclosed: Yes
Contiguous: Yes
Permitted: Yes
Wet space: No
Addition: No
Conversion: No

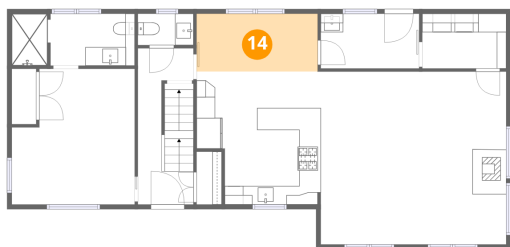
13 Floor 2 - Kitchen



Dimensions: 13'4" x 14'3"
Area: 172 sq. ft
Counted as living area: Yes

Heated: Yes
Finished: Yes
Enclosed: Yes
Contiguous: Yes
Permitted: Yes
Wet space: No
Addition: No
Conversion: No

14 Floor 2 - Dining Area

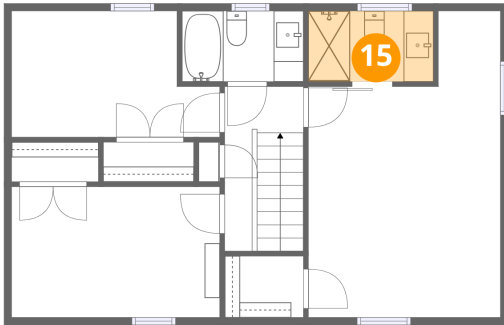


Dimensions: 13'0" x 6'2"
Area: 81 sq. ft
Counted as living area: Yes

Heated: Yes
Finished: Yes
Enclosed: Yes
Contiguous: Yes
Permitted: Yes
Wet space: No
Addition: No
Conversion: No

9636 Second Line Nassagaweya, Campbellville, Halton County,
Ontario, Canada, L0P 1B0, 9658 Second Line Nassagaweya

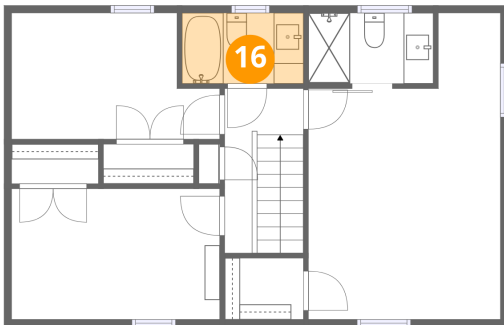
15 Floor 3 - Bath



Dimensions: 8'4" x 4'9"
Area: 40 sq. ft
Counted as living area: Yes

Heated: Yes
Finished: Yes
Enclosed: Yes
Contiguous: Yes
Permitted: Yes
Wet space: Yes
Addition: No
Conversion: No

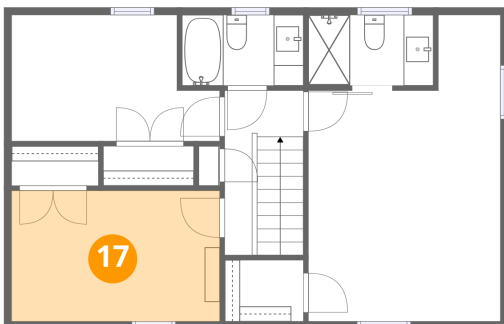
16 Floor 3 - Bath



Dimensions: 8'2" x 4'9"
Area: 38 sq. ft
Counted as living area: Yes

Heated: Yes
Finished: Yes
Enclosed: Yes
Contiguous: Yes
Permitted: Yes
Wet space: Yes
Addition: No
Conversion: No

17 Floor 3 - Bedroom

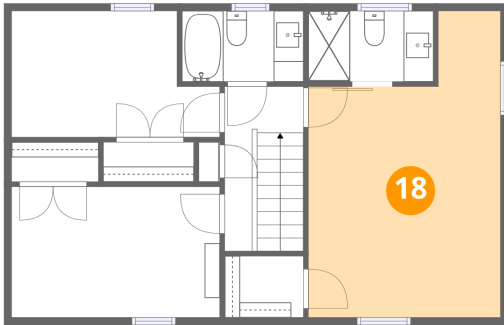


Dimensions: 13'11" x 8'9"
Area: 122 sq. ft
Counted as living area: Yes

Heated: Yes
Finished: Yes
Enclosed: Yes
Contiguous: Yes
Permitted: Yes
Wet space: No
Addition: No
Conversion: No

9636 Second Line Nassagaweya, Campbellville, Halton County,
Ontario, Canada, L0P 1B0, 9658 Second Line Nassagaweya

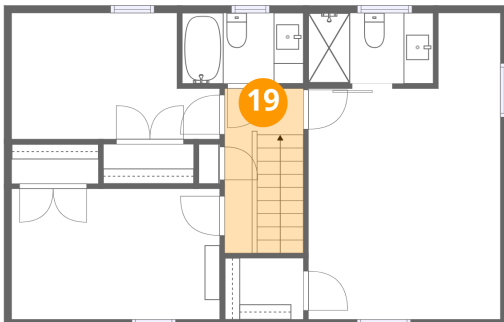
18 Floor 3 - Primary Bedroom



Dimensions: 12'10" x 20'6"
Area: 220 sq. ft
Counted as living area: Yes

Heated: Yes
Finished: Yes
Enclosed: Yes
Contiguous: Yes
Permitted: Yes
Wet space: No
Addition: No
Conversion: No

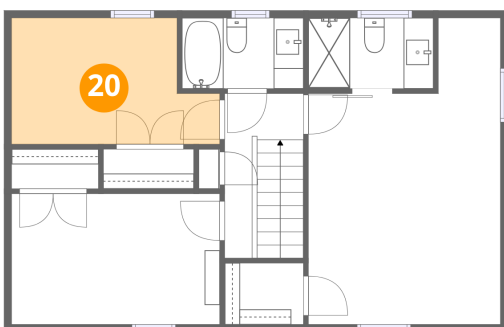
19 Floor 3 - Hall



Dimensions: 5'3" x 11'0"
Area: 58 sq. ft
Counted as living area: Yes

Heated: Yes
Finished: Yes
Enclosed: Yes
Contiguous: Yes
Permitted: Yes
Wet space: No
Addition: No
Conversion: No

20 Floor 3 - Bedroom



Dimensions: 13'11" x 8'5"
Area: 103 sq. ft
Counted as living area: Yes

Heated: Yes
Finished: Yes
Enclosed: Yes
Contiguous: Yes
Permitted: Yes
Wet space: No
Addition: No
Conversion: No