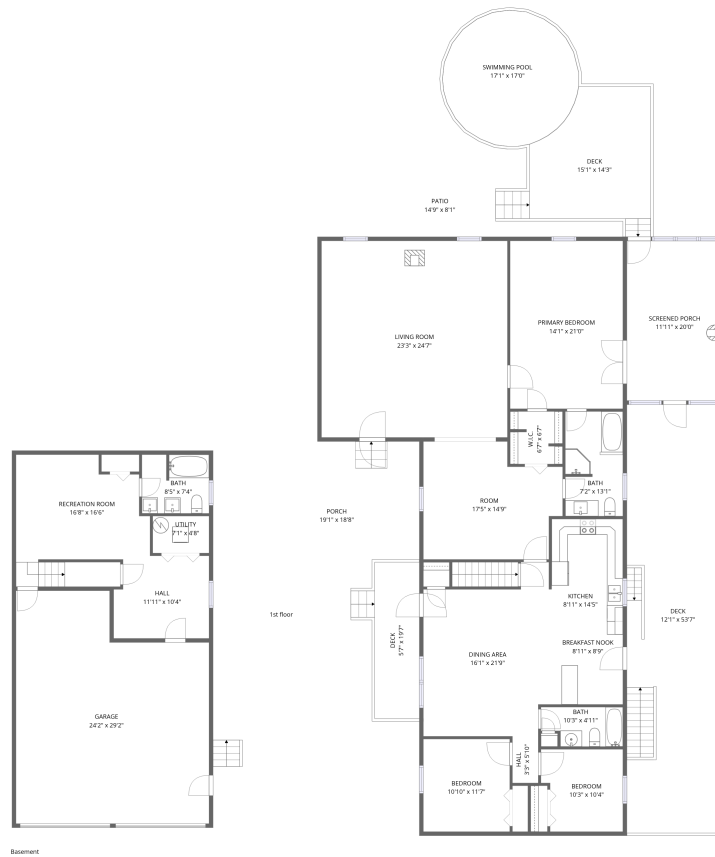


320 Shawnee Trail, Winchester, VA, US



Total Area: 2599 sq. ft

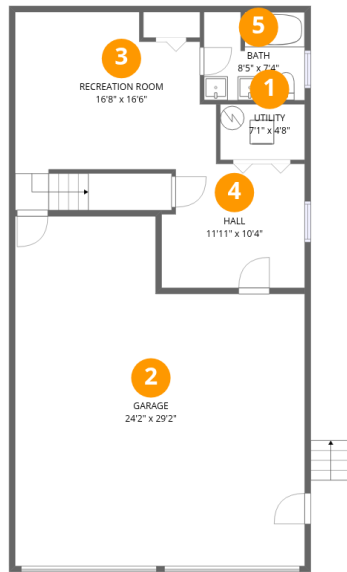
Basement: 443 sq. ft, 1st Floor: 2156 sq. ft

Excluded: Garage 623 sq. ft, Utility 33 sq. ft, Screened porch 238 sq. ft, Porch 337 sq. ft, Deck 976 sq. ft, Patio 135 sq. ft, Walls: 221 sq. ft

Property summary



320 Shawnee Trail, Winchester, VA, US



Room dimensions

Floor 1 Below grade

Total:443sqft

Excluded: 656sqft

#		Dimensions	sqft	Counted as living area
1	Utility	7'1" x 4'8"	33 sq. ft	No
2	Garage	24'2" x 29'2"	703 sq. ft	No
3	Recreation Room	16'8" x 16'6"	276 sq. ft	Yes
4	Hall	11'11" x 10'4"	123 sq. ft	Yes
5	Bath	8'5" x 7'4"	62 sq. ft	Yes

320 Shawnee Trail, Winchester, VA, US



Room dimensions

Floor 2

Total: 2156 sqft

Excluded: 1686 sqft

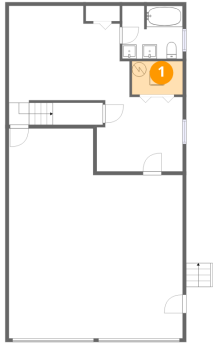
#		Dimensions	sqft	Counted as living area
6	Deck	5'7" x 19'7"	109 sq. ft	No
7	Dining Area	16'1" x 21'9"	350 sq. ft	Yes
8	Primary Bedroom	14'1" x 21'0"	296 sq. ft	Yes
9	Kitchen	8'11" x 14'5"	128 sq. ft	Yes
10	Patio	14'9" x 8'1"	120 sq. ft	No
11	Bath	10'3" x 4'11"	51 sq. ft	Yes
12	Deck	15'1" x 14'3"	216 sq. ft	No
13	Screened Porch	11'11" x 20'0"	238 sq. ft	No
14	Living Room	23'3" x 24'7"	571 sq. ft	Yes
15	W.I.C.	6'7" x 6'7"	43 sq. ft	Yes
16	Breakfast Nook	8'11" x 8'9"	78 sq. ft	Yes

Home data report

320 Shawnee Trail, Winchester, VA, US

#		Dimensions	sqft	Counted as living area
17	Deck	12'1" x 53'7"	649 sq. ft	No
18	Swimming Pool	17'1" x 17'0"	289 sq. ft	No
19	Hall	3'3" x 5'10"	19 sq. ft	Yes
20	Porch	19'1" x 18'8"	356 sq. ft	No
21	Bedroom	10'10" x 11'7"	125 sq. ft	Yes
22	Room	17'5" x 14'9"	257 sq. ft	Yes
23	Bath	7'2" x 13'1"	94 sq. ft	Yes
24	Bedroom	10'3" x 10'4"	106 sq. ft	Yes

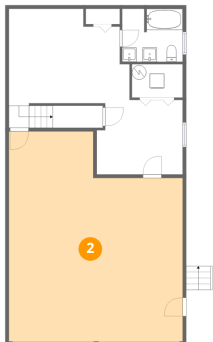
1 Floor 1 - Utility



Dimensions: 7'1" x 4'8"
Area: 33 sq. ft
Counted as living area: No

Heated: Yes
Finished: No
Enclosed: Yes
Contiguous: Yes
Permitted: Yes
Wet space: No
Addition: No
Conversion: No

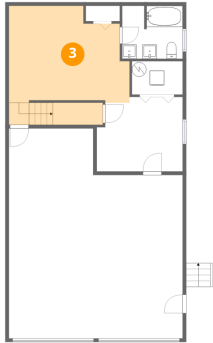
2 Floor 1 - Garage



Dimensions: 24'2" x 29'2"
Area: 703 sq. ft
Counted as living area: No

Heated: No
Finished: No
Enclosed: Yes
Contiguous: Yes
Permitted: Yes
Wet space: No
Addition: No
Conversion: No

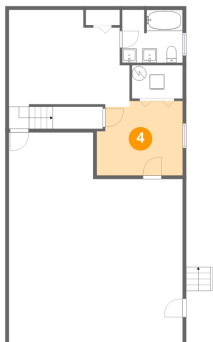
3 Floor 1 - Recreation Room



Dimensions: 16'8" x 16'6"
Area: 276 sq. ft
Counted as living area: Yes

Heated: Yes
Finished: Yes
Enclosed: Yes
Contiguous: Yes
Permitted: Yes
Wet space: No
Addition: No
Conversion: No

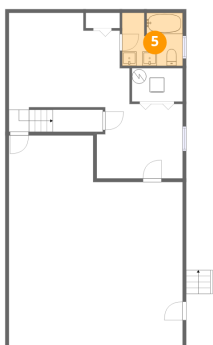
4 Floor 1 - Hall



Dimensions: 11'11" x 10'4"
Area: 123 sq. ft
Counted as living area: Yes

Heated: Yes
Finished: Yes
Enclosed: Yes
Contiguous: Yes
Permitted: Yes
Wet space: No
Addition: No
Conversion: No

5 Floor 1 - Bath



Dimensions: 8'5" x 7'4"
Area: 62 sq. ft
Counted as living area: Yes

Heated: Yes
Finished: Yes
Enclosed: Yes
Contiguous: Yes
Permitted: Yes
Wet space: Yes
Addition: No
Conversion: No

6 Floor 2 - Deck



Dimensions: 5'7" x 19'7"
Area: 109 sq. ft
Counted as living area: No

Heated: No
Finished: No
Enclosed: No
Contiguous: Yes
Permitted: Yes
Wet space: No
Addition: No
Conversion: No

7 Floor 2 - Dining Area



Dimensions: 16'1" x 21'9"
Area: 350 sq. ft
Counted as living area: Yes

Heated: Yes
Finished: Yes
Enclosed: Yes
Contiguous: Yes
Permitted: Yes
Wet space: No
Addition: No
Conversion: No

8 Floor 2 - Primary Bedroom



Dimensions: 14'1" x 21'0"
Area: 296 sq. ft
Counted as living area: Yes

Heated: Yes
Finished: Yes
Enclosed: Yes
Contiguous: Yes
Permitted: Yes
Wet space: No
Addition: No
Conversion: No

9 Floor 2 - Kitchen



Dimensions: 8'11" x 14'5"
Area: 128 sq. ft
Counted as living area: Yes

Heated: Yes
Finished: Yes
Enclosed: Yes
Contiguous: Yes
Permitted: Yes
Wet space: No
Addition: No
Conversion: No

10 Floor 2 - Patio



Dimensions: 14'9" x 8'1"
Area: 120 sq. ft
Counted as living area: No

Heated: No
Finished: No
Enclosed: No
Contiguous: Yes
Permitted: Yes
Wet space: No
Addition: No
Conversion: No

11 Floor 2 - Bath



Dimensions: 10'3" x 4'11"
Area: 51 sq. ft
Counted as living area: Yes

Heated: Yes
Finished: Yes
Enclosed: Yes
Contiguous: Yes
Permitted: Yes
Wet space: Yes
Addition: No
Conversion: No

12 Floor 2 - Deck



Dimensions: 15'1" x 14'3"
Area: 216 sq. ft
Counted as living area: No

Heated: No
Finished: No
Enclosed: No
Contiguous: Yes
Permitted: Yes
Wet space: No
Addition: No
Conversion: No

13 Floor 2 - Screened Porch



Dimensions: 11'11" x 20'0"
Area: 238 sq. ft
Counted as living area: No

Heated: No
Finished: No
Enclosed: No
Contiguous: Yes
Permitted: Yes
Wet space: No
Addition: No
Conversion: No

14 Floor 2 - Living Room



Dimensions: 23'3" x 24'7"
Area: 571 sq. ft
Counted as living area: Yes

Heated: Yes
Finished: Yes
Enclosed: Yes
Contiguous: Yes
Permitted: Yes
Wet space: No
Addition: No
Conversion: No

15 Floor 2 - W.I.C.



Dimensions: 6'7" x 6'7"
Area: 43 sq. ft
Counted as living area: Yes

Heated: Yes
Finished: Yes
Enclosed: Yes
Contiguous: Yes
Permitted: Yes
Wet space: No
Addition: No
Conversion: No

16 Floor 2 - Breakfast Nook



Dimensions: 8'11" x 8'9"
Area: 78 sq. ft
Counted as living area: Yes

Heated: Yes
Finished: Yes
Enclosed: Yes
Contiguous: Yes
Permitted: Yes
Wet space: No
Addition: No
Conversion: No

17 Floor 2 - Deck



Dimensions: 12'1" x 53'7"
Area: 649 sq. ft
Counted as living area: No

Heated: No
Finished: No
Enclosed: No
Contiguous: Yes
Permitted: Yes
Wet space: No
Addition: No
Conversion: No

18 Floor 2 - Swimming Pool



Dimensions: 17'1" x 17'0"
Area: 289 sq. ft
Counted as living area: No

Heated: No
Finished: No
Enclosed: No
Contiguous: Yes
Permitted: No
Wet space: No
Addition: No
Conversion: No

19 Floor 2 - Hall



Dimensions: 3'3" x 5'10"
Area: 19 sq. ft
Counted as living area: Yes

Heated: Yes
Finished: Yes
Enclosed: Yes
Contiguous: Yes
Permitted: Yes
Wet space: No
Addition: No
Conversion: No

20 Floor 2 - Porch



Dimensions: 19'1" x 18'8"
Area: 356 sq. ft
Counted as living area: No

Heated: No
Finished: No
Enclosed: No
Contiguous: Yes
Permitted: Yes
Wet space: No
Addition: No
Conversion: No

21 Floor 2 - Bedroom



Dimensions: 10'10" x 11'7"
Area: 125 sq. ft
Counted as living area: Yes

Heated: Yes
Finished: Yes
Enclosed: Yes
Contiguous: Yes
Permitted: Yes
Wet space: No
Addition: No
Conversion: No

22 Floor 2 - Room



Dimensions: 17'5" x 14'9"
Area: 257 sq. ft
Counted as living area: Yes

Heated: Yes
Finished: Yes
Enclosed: Yes
Contiguous: Yes
Permitted: Yes
Wet space: No
Addition: No
Conversion: No

23 Floor 2 - Bath



Dimensions: 7'2" x 13'1"
Area: 94 sq. ft
Counted as living area: Yes

Heated: Yes
Finished: Yes
Enclosed: Yes
Contiguous: Yes
Permitted: Yes
Wet space: Yes
Addition: No
Conversion: No

24 Floor 2 - Bedroom



Dimensions: 10'3" x 10'4"
Area: 106 sq. ft
Counted as living area: Yes

Heated: Yes
Finished: Yes
Enclosed: Yes
Contiguous: Yes
Permitted: Yes
Wet space: No
Addition: No
Conversion: No