

Home report

8283 Cross Canyon Road, San Miguel, San Luis Obispo County, California, United States, 93451, Main Home



Total Area: 6585 sq. ft

Floor 1: 4353 sq. ft, Floor 2: 2232 sq. ft

Excluded: Garage 776 sq. ft, Fireplace 11 sq. ft, Open to below 1116 sq. ft, Walls: 336 sq. ft

Property summary

 **2** Floors

 **5** Bedrooms

 **4** Bathrooms

Home report

8283 Cross Canyon Road, San Miguel, San Luis Obispo County,
California, United States, 93451, Main Home

 **1**
Half baths

 **1**
Garages

Home report

8283 Cross Canyon Road, San Miguel, San Luis Obispo County,
California, United States, 93451, Main Home



Room dimensions

Floor 1

Total:4353sqft Excluded: 787sqft

#		Max Dimensions	sqft	Included
1	Living Room	29'1" x 23'6"	585 sq. ft	Yes
2	Laundry	11'7" x 14'3"	152 sq. ft	Yes
3	Pantry	9'0" x 18'0"	129 sq. ft	Yes
4	Dining Room	9'9" x 22'0"	208 sq. ft	Yes
5	WC	5'1" x 4'7"	21 sq. ft	Yes
6	Garage	26'8" x 35'2"	776 sq. ft	No
7	Office	12'3" x 12'3"	135 sq. ft	Yes
8	Primary Bedroom	22'9" x 25'3"	520 sq. ft	Yes
9	Kitchen	18'2" x 16'5"	292 sq. ft	Yes
10	Hall	41'9" x 19'4"	366 sq. ft	Yes
11	Hall	33'1" x 29'3"	875 sq. ft	Yes

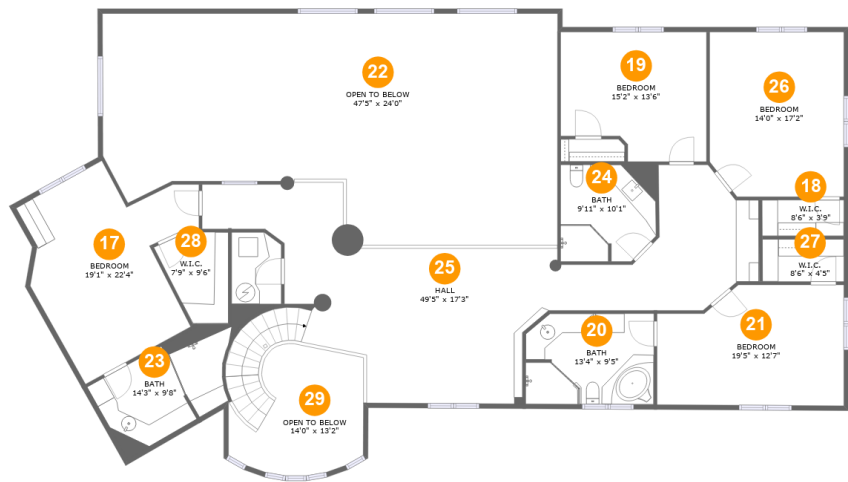
Home report

**8283 Cross Canyon Road, San Miguel, San Luis Obispo County,
California, United States, 93451, Main Home**

#		Max Dimensions	sqft	Included
12	W.I.C.	19'0" x 8'10"	146 sq. ft	Yes
13	WC	10'2" x 13'1"	109 sq. ft	Yes
14	Primary Bath	23'7" x 19'4"	318 sq. ft	Yes
15	W.I.C.	15'7" x 10'6"	81 sq. ft	Yes
16	Family Room	20'3" x 33'5"	687 sq. ft	Yes

Home report

8283 Cross Canyon Road, San Miguel, San Luis Obispo County,
California, United States, 93451, Main Home



Room dimensions

Floor 2 Total:2232sqft Excluded: 1116sqft

#		Max Dimensions	sqft	Included
17	Bedroom	19'1" x 22'4"	265 sq. ft	Yes
18	W.I.C.	8'6" x 3'9"	32 sq. ft	Yes
19	Bedroom	15'2" x 13'6"	187 sq. ft	Yes
20	Bath	13'4" x 9'5"	122 sq. ft	Yes
21	Bedroom	19'5" x 12'7"	224 sq. ft	Yes
22	Open To Below	47'5" x 24'0"	971 sq. ft	No
23	Bath	14'3" x 9'8"	121 sq. ft	Yes
24	Bath	9'11" x 10'1"	96 sq. ft	Yes
25	Hall	49'5" x 17'3"	714 sq. ft	Yes
26	Bedroom	14'0" x 17'2"	235 sq. ft	Yes
27	W.I.C.	8'6" x 4'5"	37 sq. ft	Yes

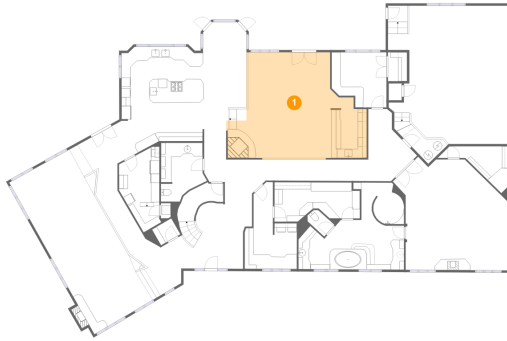
Home report

8283 Cross Canyon Road, San Miguel, San Luis Obispo County,
California, United States, 93451, Main Home

#		Max Dimensions	sqft	Included
28	W.I.C.	7'9" x 9'6"	55 sq. ft	Yes
29	Open To Below	14'0" x 13'2"	146 sq. ft	No

8283 Cross Canyon Road, San Miguel, San Luis Obispo County,
California, United States, 93451, Main Home

1 Floor 1 - Living Room



Max Dimensions: 29'1" x
23'6"
Calculated Area: 585 sq. ft
Included: Yes

Heated: Yes
Finished: Yes
Enclosed: Yes
Contiguous:
Yes
Permitted: Yes
Wet space: No
Addition: No
Conversion: No

2 Floor 1 - Laundry



Max Dimensions: 11'7" x
14'3"
Calculated Area: 152 sq. ft
Included: Yes

Heated: Yes
Finished: Yes
Enclosed: Yes
Contiguous:
Yes
Permitted: Yes
Wet space: No
Addition: No
Conversion: No

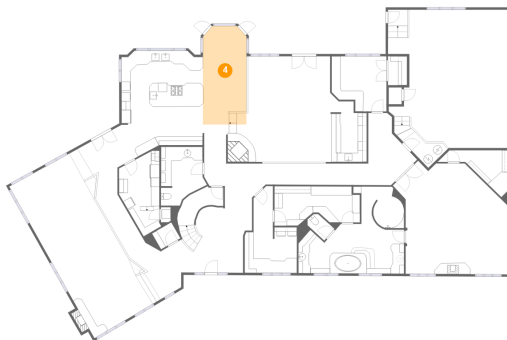
3 Floor 1 - Pantry



Max Dimensions: 9'0" x 18'0"
Calculated Area: 129 sq. ft
Included: Yes

Heated: Yes
Finished: Yes
Enclosed: Yes
Contiguous: Yes
Permitted: Yes
Wet space: No
Addition: No
Conversion: No

4 Floor 1 - Dining Room



Max Dimensions: 9'9" x 22'0"
Calculated Area: 208 sq. ft
Included: Yes

Heated: Yes
Finished: Yes
Enclosed: Yes
Contiguous: Yes
Permitted: Yes
Wet space: No
Addition: No
Conversion: No

5 Floor 1 - WC

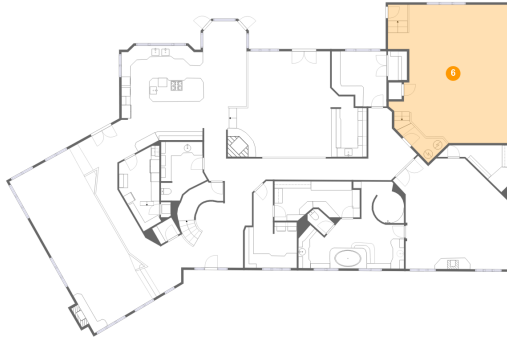


Max Dimensions: 5'1" x 4'7"
Calculated Area: 21 sq. ft
Included: Yes

Heated: Yes
Finished: Yes
Enclosed: Yes
Contiguous: Yes
Permitted: Yes
Wet space: Yes
Addition: No
Conversion: No

8283 Cross Canyon Road, San Miguel, San Luis Obispo County,
California, United States, 93451, Main Home

6 Floor 1 - Garage



Max Dimensions: 26'8" x 35'2"
Calculated Area: 776 sq. ft
Included: No

Heated: No
Finished: No
Enclosed: Yes
Contiguous: Yes
Permitted: Yes
Wet space: No
Addition: No
Conversion: No

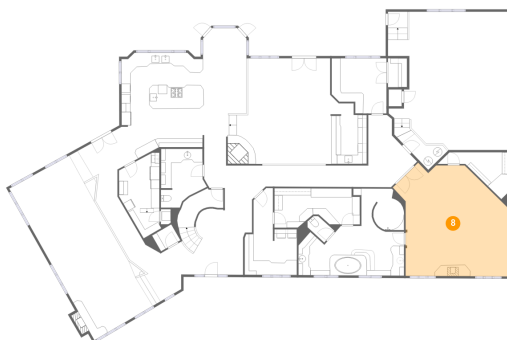
7 Floor 1 - Office



Max Dimensions: 12'3" x 12'3"
Calculated Area: 135 sq. ft
Included: Yes

Heated: Yes
Finished: Yes
Enclosed: Yes
Contiguous: Yes
Permitted: Yes
Wet space: No
Addition: No
Conversion: No

8 Floor 1 - Primary Bedroom



Max Dimensions: 22'9" x 25'3"
Calculated Area: 520 sq. ft
Included: Yes

Heated: Yes
Finished: Yes
Enclosed: Yes
Contiguous: Yes
Permitted: Yes
Wet space: No
Addition: No
Conversion: No

8283 Cross Canyon Road, San Miguel, San Luis Obispo County,
California, United States, 93451, Main Home

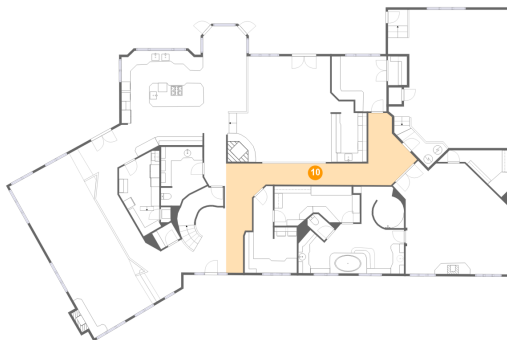
9 Floor 1 - Kitchen



Max Dimensions: 18'2" x 16'5"
Calculated Area: 292 sq. ft
Included: Yes

Heated: Yes
Finished: Yes
Enclosed: Yes
Contiguous: Yes
Permitted: Yes
Wet space: No
Addition: No
Conversion: No

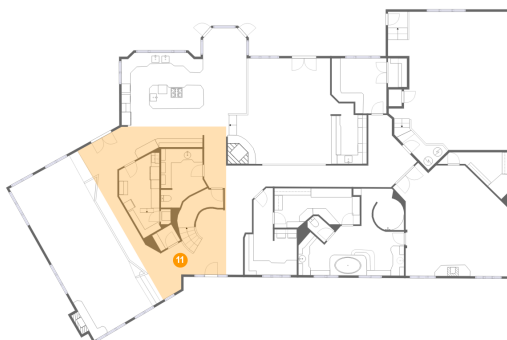
10 Floor 1 - Hall



Max Dimensions: 41'9" x 19'4"
Calculated Area: 366 sq. ft
Included: Yes

Heated: Yes
Finished: Yes
Enclosed: Yes
Contiguous: Yes
Permitted: Yes
Wet space: No
Addition: No
Conversion: No

11 Floor 1 - Hall



Max Dimensions: 33'1" x 29'3"
Calculated Area: 875 sq. ft
Included: Yes

Heated: Yes
Finished: Yes
Enclosed: Yes
Contiguous: Yes
Permitted: Yes
Wet space: No
Addition: No
Conversion: No

8283 Cross Canyon Road, San Miguel, San Luis Obispo County,
California, United States, 93451, Main Home

12 Floor 1 - W.I.C.



Max Dimensions: 19'0" x 8'10"
Calculated Area: 146 sq. ft
Included: Yes

Heated: Yes
Finished: Yes
Enclosed: Yes
Contiguous: Yes
Permitted: Yes
Wet space: No
Addition: No
Conversion: No

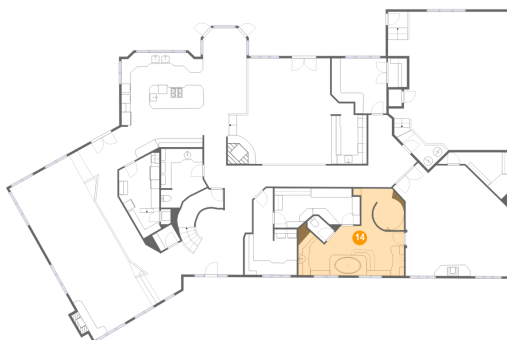
13 Floor 1 - WC



Max Dimensions: 10'2" x 13'1"
Calculated Area: 109 sq. ft
Included: Yes

Heated: Yes
Finished: Yes
Enclosed: Yes
Contiguous: Yes
Permitted: Yes
Wet space: No
Addition: No
Conversion: No

14 Floor 1 - Primary Bath

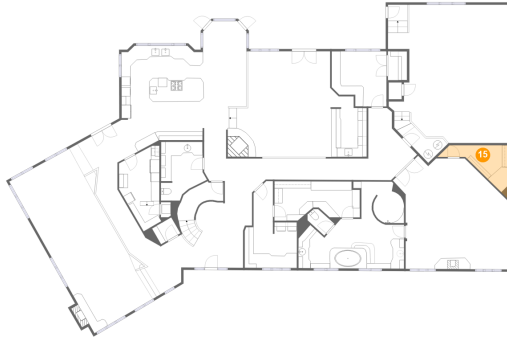


Max Dimensions: 23'7" x 19'4"
Calculated Area: 318 sq. ft
Included: Yes

Heated: Yes
Finished: Yes
Enclosed: Yes
Contiguous: Yes
Permitted: Yes
Wet space: Yes
Addition: No
Conversion: No

8283 Cross Canyon Road, San Miguel, San Luis Obispo County,
California, United States, 93451, Main Home

15 Floor 1 - W.I.C.



Max Dimensions: 15'7" x 10'6"
Calculated Area: 81 sq. ft
Included: Yes

Heated: Yes
Finished: Yes
Enclosed: Yes
Contiguous: Yes
Permitted: Yes
Wet space: No
Addition: No
Conversion: No

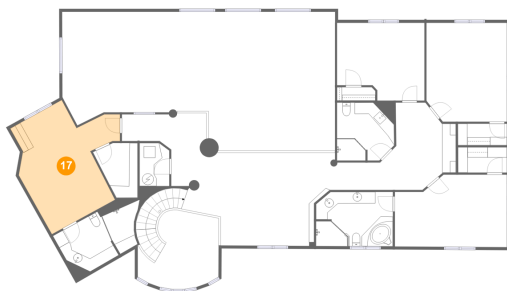
16 Floor 1 - Family Room



Max Dimensions: 20'3" x 33'5"
Calculated Area: 687 sq. ft
Included: Yes

Heated: Yes
Finished: Yes
Enclosed: Yes
Contiguous: Yes
Permitted: Yes
Wet space: No
Addition: No
Conversion: No

17 Floor 2 - Bedroom

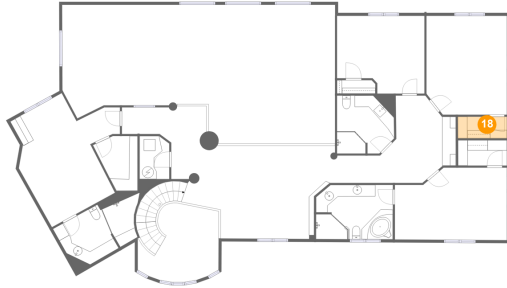


Max Dimensions: 19'1" x 22'4"
Calculated Area: 265 sq. ft
Included: Yes

Heated: Yes
Finished: Yes
Enclosed: Yes
Contiguous: Yes
Permitted: Yes
Wet space: No
Addition: No
Conversion: No

8283 Cross Canyon Road, San Miguel, San Luis Obispo County,
California, United States, 93451, Main Home

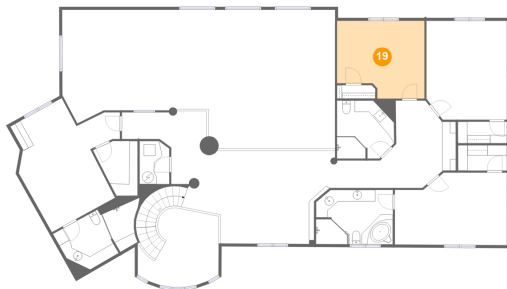
18 Floor 2 - W.I.C.



Max Dimensions: 8'6" x 3'9"
Calculated Area: 32 sq. ft
Included: Yes

Heated: Yes
Finished: Yes
Enclosed: Yes
Contiguous: Yes
Permitted: Yes
Wet space: No
Addition: No
Conversion: No

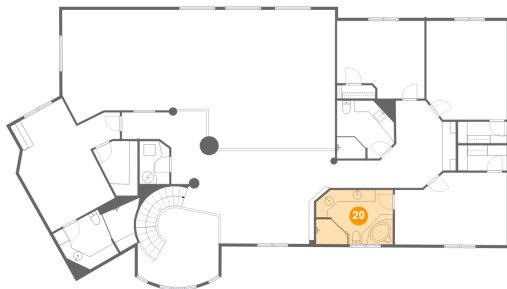
19 Floor 2 - Bedroom



Max Dimensions: 15'2" x 13'6"
Calculated Area: 187 sq. ft
Included: Yes

Heated: Yes
Finished: Yes
Enclosed: Yes
Contiguous: Yes
Permitted: Yes
Wet space: No
Addition: No
Conversion: No

20 Floor 2 - Bath

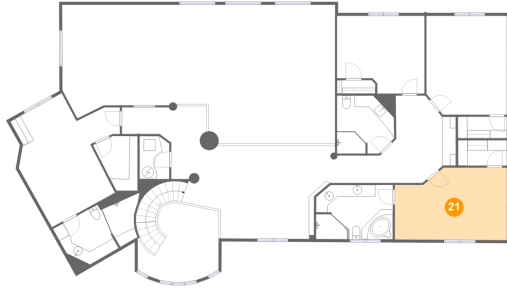


Max Dimensions: 13'4" x 9'5"
Calculated Area: 122 sq. ft
Included: Yes

Heated: Yes
Finished: Yes
Enclosed: Yes
Contiguous: Yes
Permitted: Yes
Wet space: Yes
Addition: No
Conversion: No

8283 Cross Canyon Road, San Miguel, San Luis Obispo County,
California, United States, 93451, Main Home

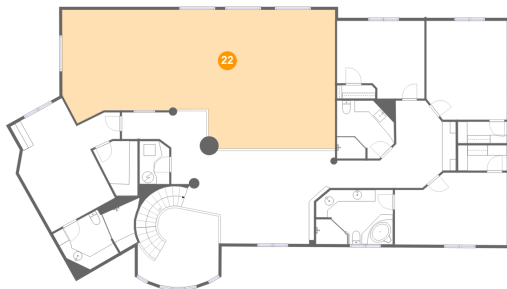
21 Floor 2 - Bedroom



Max Dimensions: 19'5" x 12'7"
Calculated Area: 224 sq. ft
Included: Yes

Heated: Yes
Finished: Yes
Enclosed: Yes
Contiguous: Yes
Permitted: Yes
Wet space: No
Addition: No
Conversion: No

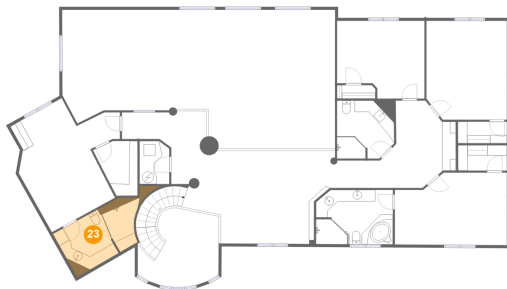
22 Floor 2 - Open To Below



Max Dimensions: 47'5" x 24'0"
Calculated Area: 971 sq. ft
Included: No

Heated: No
Finished: No
Enclosed: No
Contiguous: Yes
Permitted: No
Wet space: No
Addition: No
Conversion: No

23 Floor 2 - Bath

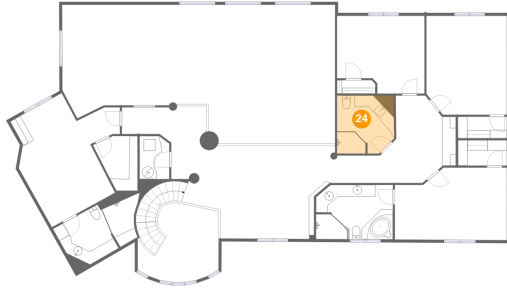


Max Dimensions: 14'3" x 9'8"
Calculated Area: 121 sq. ft
Included: Yes

Heated: Yes
Finished: Yes
Enclosed: Yes
Contiguous: Yes
Permitted: Yes
Wet space: Yes
Addition: No
Conversion: No

8283 Cross Canyon Road, San Miguel, San Luis Obispo County,
California, United States, 93451, Main Home

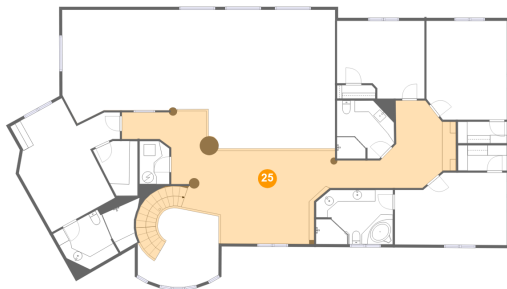
24 Floor 2 - Bath



Max Dimensions: 9'11" x 10'1"
Calculated Area: 96 sq. ft
Included: Yes

Heated: Yes
Finished: Yes
Enclosed: Yes
Contiguous: Yes
Permitted: Yes
Wet space: Yes
Addition: No
Conversion: No

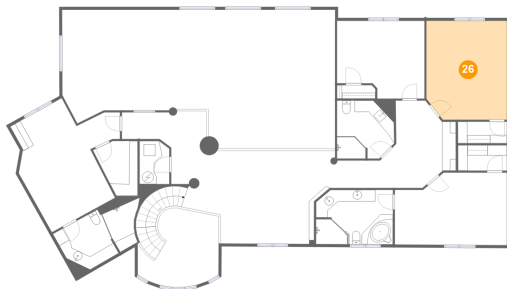
25 Floor 2 - Hall



Max Dimensions: 49'5" x 17'3"
Calculated Area: 714 sq. ft
Included: Yes

Heated: Yes
Finished: Yes
Enclosed: Yes
Contiguous: Yes
Permitted: Yes
Wet space: No
Addition: No
Conversion: No

26 Floor 2 - Bedroom



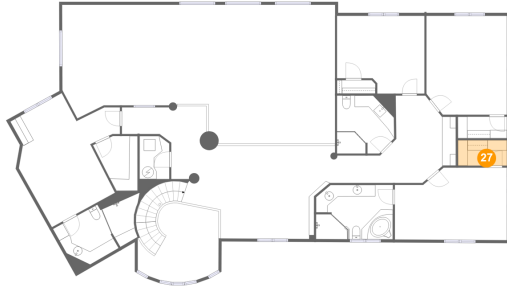
Max Dimensions: 14'0" x 17'2"
Calculated Area: 235 sq. ft
Included: Yes

Heated: Yes
Finished: Yes
Enclosed: Yes
Contiguous: Yes
Permitted: Yes
Wet space: No
Addition: No
Conversion: No

Home report

8283 Cross Canyon Road, San Miguel, San Luis Obispo County, California, United States, 93451, Main Home

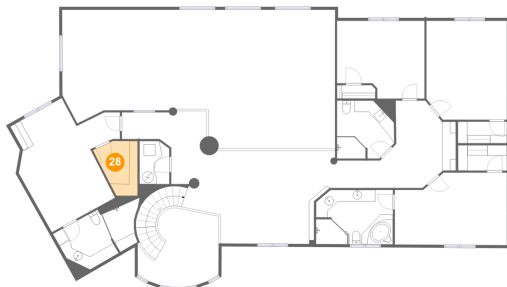
27 Floor 2 - W.I.C.



Max Dimensions: 8'6" x 4'5"
Calculated Area: 37 sq. ft
Included: Yes

Heated: Yes
Finished: Yes
Enclosed: Yes
Contiguous: Yes
Permitted: Yes
Wet space: No
Addition: No
Conversion: No

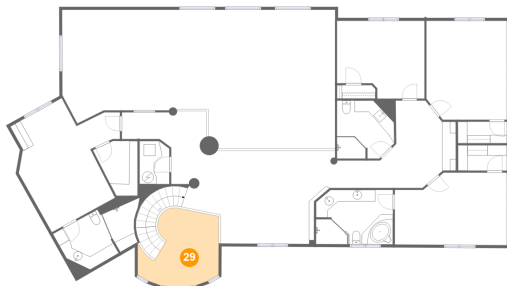
28 Floor 2 - W.I.C.



Max Dimensions: 7'9" x 9'6"
Calculated Area: 55 sq. ft
Included: Yes

Heated: Yes
Finished: Yes
Enclosed: Yes
Contiguous: Yes
Permitted: Yes
Wet space: No
Addition: No
Conversion: No

29 Floor 2 - Open To Below



Max Dimensions: 14'0" x 13'2"
Calculated Area: 146 sq. ft
Included: No

Heated: No
Finished: No
Enclosed: No
Contiguous: Yes
Permitted: No
Wet space: No
Addition: No
Conversion: No