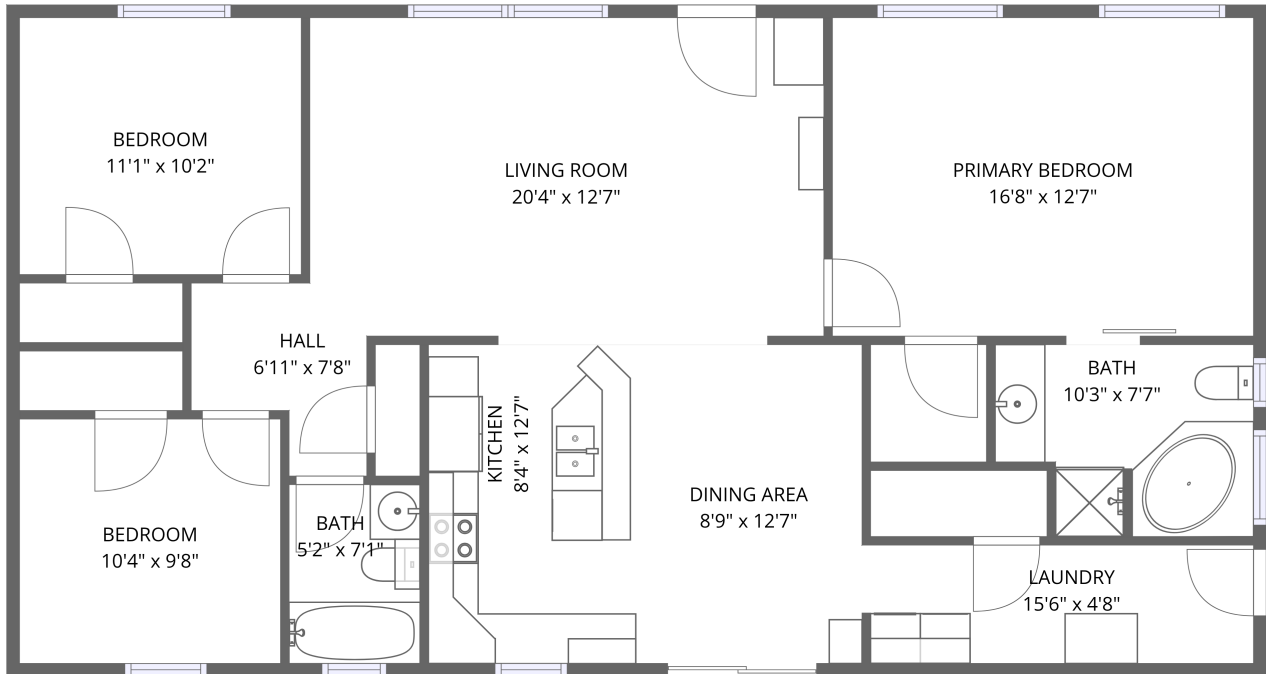


Home data report

57 Rail Trl Ln, St Albans City, VT, US



1st floor

Total Area: 1247 sq. ft

1st Floor: 1247 sq. ft

Excluded: Walls: 75 sq. ft

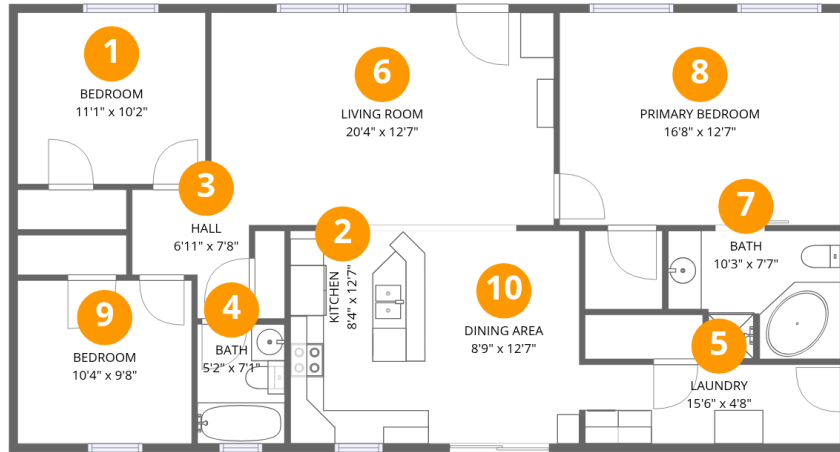
Property summary

 **1** Floors

 **3** Bedrooms

 **2** Bathrooms

57 Rail Trl Ln, St Albans City, VT, US



Room dimensions

Floor 1

Total: 1247 sqft Excluded: 0 sqft

#		Dimensions	sqft	Counted as living area
1	Bedroom	11'1" x 10'2"	112 sq. ft	Yes
2	Kitchen	8'4" x 12'7"	105 sq. ft	Yes
3	Hall	6'11" x 7'8"	53 sq. ft	Yes
4	Bath	5'2" x 7'1"	37 sq. ft	Yes
5	Laundry	15'6" x 4'8"	73 sq. ft	Yes
6	Living Room	20'4" x 12'7"	256 sq. ft	Yes
7	Bath	10'3" x 7'7"	78 sq. ft	Yes
8	Primary Bedroom	16'8" x 12'7"	210 sq. ft	Yes
9	Bedroom	10'4" x 9'8"	99 sq. ft	Yes
10	Dining Area	8'9" x 12'7"	110 sq. ft	Yes

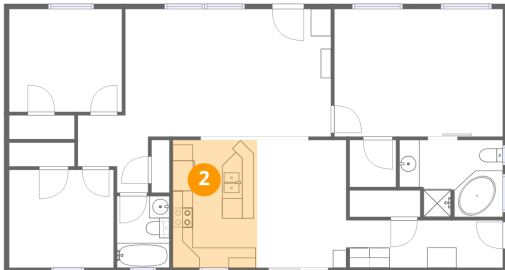
1 Floor 1 - Bedroom



Dimensions: 11'1" x 10'2"
Area: 112 sq. ft
Counted as living area: Yes

Heated: Yes
Finished: Yes
Enclosed: Yes
Contiguous: Yes
Permitted: Yes
Wet space: No
Addition: No
Conversion: No

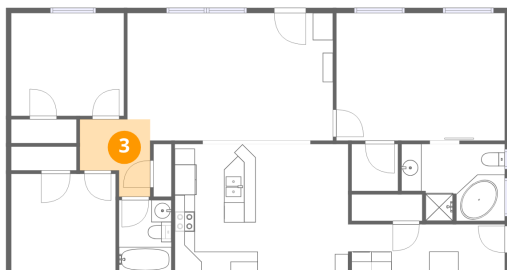
2 Floor 1 - Kitchen



Dimensions: 8'4" x 12'7"
Area: 105 sq. ft
Counted as living area: Yes

Heated: Yes
Finished: Yes
Enclosed: Yes
Contiguous: Yes
Permitted: Yes
Wet space: No
Addition: No
Conversion: No

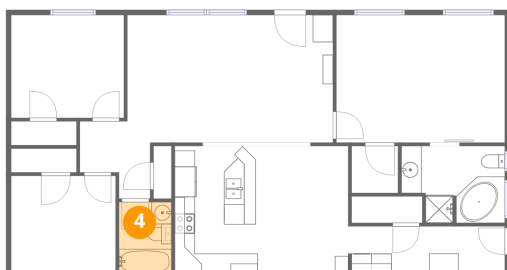
3 Floor 1 - Hall



Dimensions: 6'11" x 7'8"
Area: 53 sq. ft
Counted as living area: Yes

Heated: Yes
Finished: Yes
Enclosed: Yes
Contiguous: Yes
Permitted: Yes
Wet space: No
Addition: No
Conversion: No

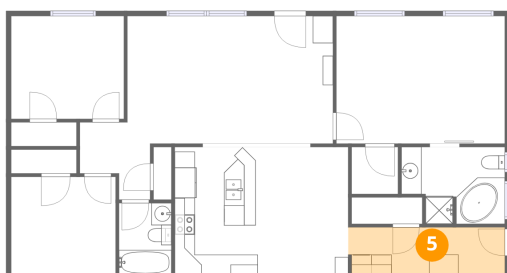
4 Floor 1 - Bath



Dimensions: 5'2" x 7'1"
Area: 37 sq. ft
Counted as living area: Yes

Heated: Yes
Finished: Yes
Enclosed: Yes
Contiguous: Yes
Permitted: Yes
Wet space: Yes
Addition: No
Conversion: No

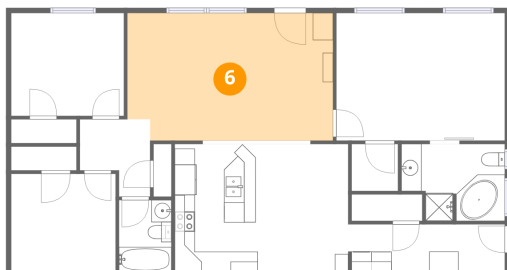
5 Floor 1 - Laundry



Dimensions: 15'6" x 4'8"
Area: 73 sq. ft
Counted as living area: Yes

Heated: Yes
Finished: Yes
Enclosed: Yes
Contiguous: Yes
Permitted: Yes
Wet space: No
Addition: No
Conversion: No

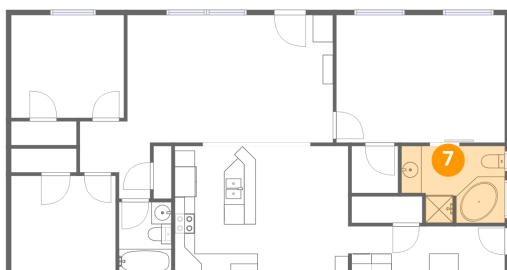
6 Floor 1 - Living Room



Dimensions: 20'4" x 12'7"
Area: 256 sq. ft
Counted as living area: Yes

Heated: Yes
Finished: Yes
Enclosed: Yes
Contiguous: Yes
Permitted: Yes
Wet space: No
Addition: No
Conversion: No

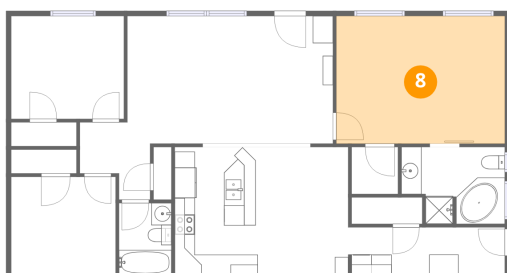
7 Floor 1 - Bath



Dimensions: 10'3" x 7'7"
Area: 78 sq. ft
Counted as living area: Yes

Heated: Yes
Finished: Yes
Enclosed: Yes
Contiguous: Yes
Permitted: Yes
Wet space: Yes
Addition: No
Conversion: No

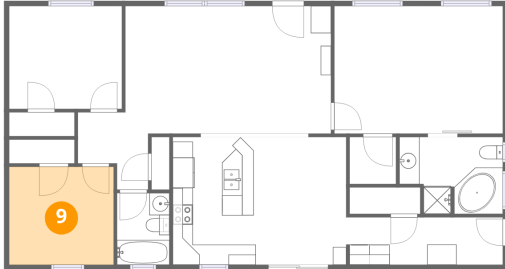
8 Floor 1 - Primary Bedroom



Dimensions: 16'8" x 12'7"
Area: 210 sq. ft
Counted as living area: Yes

Heated: Yes
Finished: Yes
Enclosed: Yes
Contiguous: Yes
Permitted: Yes
Wet space: No
Addition: No
Conversion: No

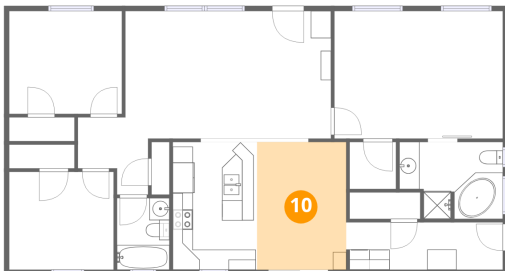
9 Floor 1 - Bedroom



Dimensions: 10'4" x 9'8"
Area: 99 sq. ft
Counted as living area: Yes

Heated: Yes
Finished: Yes
Enclosed: Yes
Contiguous: Yes
Permitted: Yes
Wet space: No
Addition: No
Conversion: No

10 Floor 1 - Dining Area



Dimensions: 8'9" x 12'7"
Area: 110 sq. ft
Counted as living area: Yes

Heated: Yes
Finished: Yes
Enclosed: Yes
Contiguous: Yes
Permitted: Yes
Wet space: No
Addition: No
Conversion: No