

Home data report

119 Sanibell Circle, Madison, Madison County, Alabama, United States, 35757



1st floor

Total Area: 1905 sq. ft

1st Floor: 1905 sq. ft

Excluded: Garage 399 sq. ft, Embedded window 7 sq. ft, Fireplace 41 sq. ft, Walls: 137 sq. ft

Property summary



1 Floors



3 Bedrooms



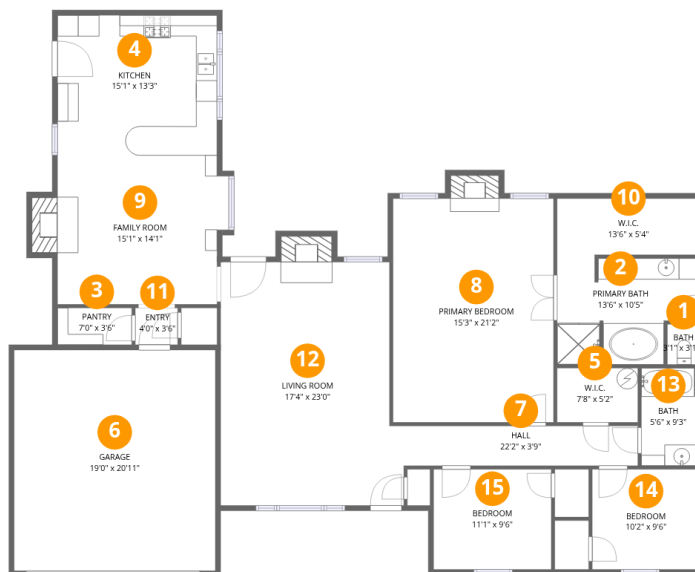
2 Bathrooms



1 Garages

Home data report

119 Sanibell Circle, Madison, Madison County, Alabama, United States, 35757



Room dimensions

Floor 1

Total:1905sqft Excluded: 447sqft

#		Dimensions	sqft	Counted as living area
1	Bath	3'1" x 3'10"	12 sq. ft	Yes
2	Primary Bath	13'6" x 10'5"	141 sq. ft	Yes
3	Pantry	7'0" x 3'6"	25 sq. ft	Yes
4	Kitchen	15'1" x 13'3"	199 sq. ft	Yes
5	W.I.C.	7'8" x 5'2"	39 sq. ft	Yes
6	Garage	19'0" x 20'11"	397 sq. ft	No
7	Hall	22'2" x 3'9"	84 sq. ft	Yes
8	Primary Bedroom	15'3" x 21'2"	322 sq. ft	Yes
9	Family Room	15'1" x 14'1"	213 sq. ft	Yes
10	W.I.C.	13'6" x 5'4"	72 sq. ft	Yes
11	Entry	4'0" x 3'6"	14 sq. ft	Yes

Home data report

119 Sanibell Circle, Madison, Madison County, Alabama, United States, 35757

#		Dimensions	sqft	Counted as living area
12	Living Room	17'4" x 23'0"	399 sq. ft	Yes
13	Bath	5'6" x 9'3"	51 sq. ft	Yes
14	Bedroom	10'2" x 9'6"	97 sq. ft	Yes
15	Bedroom	11'1" x 9'6"	106 sq. ft	Yes

1 Floor 1 - Bath



Dimensions: 3'1" x 3'10"
Area: 12 sq. ft
Counted as living area: Yes

Heated: Yes
Finished: Yes
Enclosed: Yes
Contiguous: Yes
Permitted: Yes
Wet space: Yes
Addition: No
Conversion: No

2 Floor 1 - Primary Bath



Dimensions: 13'6" x 10'5"
Area: 141 sq. ft
Counted as living area: Yes

Heated: Yes
Finished: Yes
Enclosed: Yes
Contiguous: Yes
Permitted: Yes
Wet space: Yes
Addition: No
Conversion: No

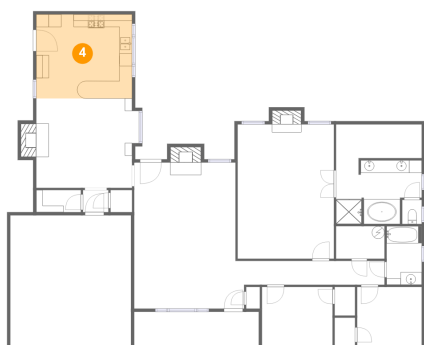
3 Floor 1 - Pantry



Dimensions: 7'0" x 3'6"
Area: 25 sq. ft
Counted as living area: Yes

Heated: Yes
Finished: Yes
Enclosed: Yes
Contiguous: Yes
Permitted: Yes
Wet space: No
Addition: No
Conversion: No

4 Floor 1 - Kitchen



Dimensions: 15'1" x 13'3"
Area: 199 sq. ft
Counted as living area: Yes

Heated: Yes
Finished: Yes
Enclosed: Yes
Contiguous: Yes
Permitted: Yes
Wet space: No
Addition: No
Conversion: No

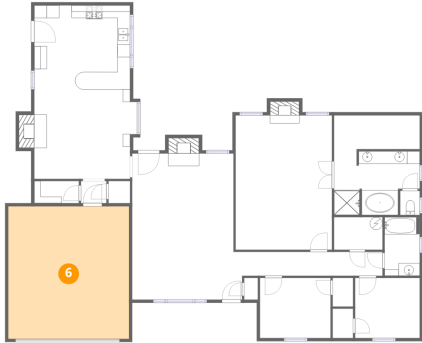
5 Floor 1 - W.I.C.



Dimensions: 7'8" x 5'2"
Area: 39 sq. ft
Counted as living area: Yes

Heated: Yes
Finished: Yes
Enclosed: Yes
Contiguous: Yes
Permitted: Yes
Wet space: No
Addition: No
Conversion: No

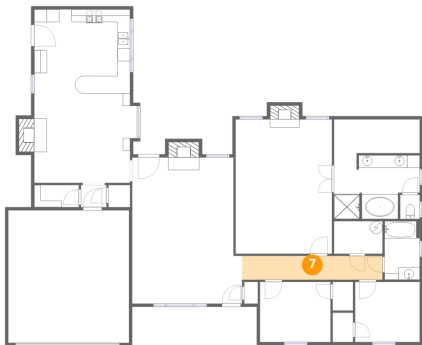
6 Floor 1 - Garage



Dimensions: 19'0" x 20'11"
Area: 397 sq. ft
Counted as living area: No

Heated: No
Finished: No
Enclosed: Yes
Contiguous: Yes
Permitted: Yes
Wet space: No
Addition: No
Conversion: No

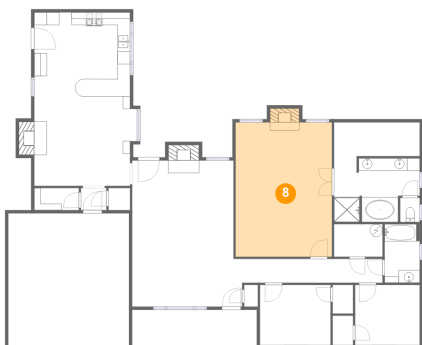
7 Floor 1 - Hall



Dimensions: 22'2" x 3'9"
Area: 84 sq. ft
Counted as living area: Yes

Heated: Yes
Finished: Yes
Enclosed: Yes
Contiguous: Yes
Permitted: Yes
Wet space: No
Addition: No
Conversion: No

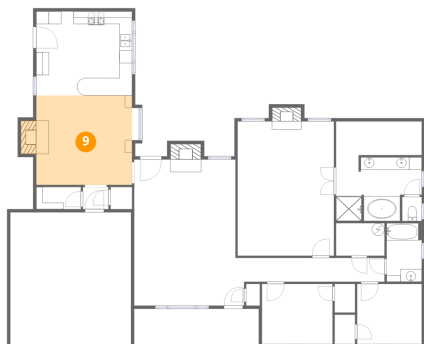
8 Floor 1 - Primary Bedroom



Dimensions: 15'3" x 21'2"
Area: 322 sq. ft
Counted as living area: Yes

Heated: Yes
Finished: Yes
Enclosed: Yes
Contiguous: Yes
Permitted: Yes
Wet space: No
Addition: No
Conversion: No

9 Floor 1 - Family Room



Dimensions: 15'1" x 14'1"
Area: 213 sq. ft
Counted as living area: Yes

Heated: Yes
Finished: Yes
Enclosed: Yes
Contiguous: Yes
Permitted: Yes
Wet space: No
Addition: No
Conversion: No

10 Floor 1 - W.I.C.



Dimensions: 13'6" x 5'4"
Area: 72 sq. ft
Counted as living area: Yes

Heated: Yes
Finished: Yes
Enclosed: Yes
Contiguous: Yes
Permitted: Yes
Wet space: No
Addition: No
Conversion: No

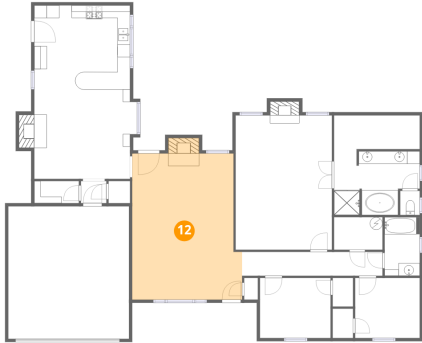
11 Floor 1 - Entry



Dimensions: 4'0" x 3'6"
Area: 14 sq. ft
Counted as living area: Yes

Heated: Yes
Finished: Yes
Enclosed: Yes
Contiguous: Yes
Permitted: Yes
Wet space: No
Addition: No
Conversion: No

12 Floor 1 - Living Room



Dimensions: 17'4" x 23'0"
Area: 399 sq. ft
Counted as living area: Yes

Heated: Yes
Finished: Yes
Enclosed: Yes
Contiguous: Yes
Permitted: Yes
Wet space: No
Addition: No
Conversion: No

13 Floor 1 - Bath



Dimensions: 5'6" x 9'3"
Area: 51 sq. ft
Counted as living area: Yes

Heated: Yes
Finished: Yes
Enclosed: Yes
Contiguous: Yes
Permitted: Yes
Wet space: Yes
Addition: No
Conversion: No

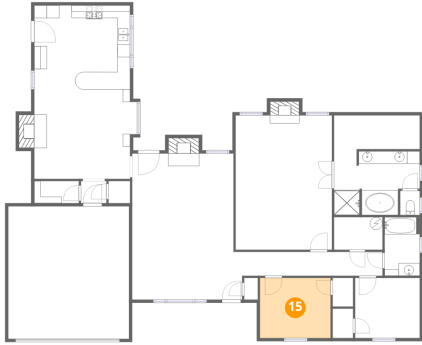
14 Floor 1 - Bedroom



Dimensions: 10'2" x 9'6"
Area: 97 sq. ft
Counted as living area: Yes

Heated: Yes
Finished: Yes
Enclosed: Yes
Contiguous: Yes
Permitted: Yes
Wet space: No
Addition: No
Conversion: No

15 Floor 1 - Bedroom



Dimensions: 11'1" x 9'6"
Area: 106 sq. ft
Counted as living area: Yes

Heated: Yes
Finished: Yes
Enclosed: Yes
Contiguous: Yes
Permitted: Yes
Wet space: No
Addition: No
Conversion: No