

Home report

13750 Falcon Road, Atascadero, San Luis Obispo County,  
California, United States, 93422




Total Area: 1963 sq. ft


Floor 1: 1963 sq. ft

Excluded: Garage 616 sq. ft, Walls: 151 sq. ft

Property summary

 1 Floors

 3 Bedrooms

 2 Bathrooms

Home report

**13750 Falcon Road, Atascadero, San Luis Obispo County,  
California, United States, 93422**



**1**  
Half baths



**1**  
Garages

Home report

13750 Falcon Road, Atascadero, San Luis Obispo County,  
California, United States, 93422



Room dimensions

Floor 1 Total:1963sqft Excluded: 616sqft

#		Max Dimensions	sqft	Included
1	Kitchen	14'11" x 12'11"	179 sq. ft	Yes
2	W.I.C.	5'10" x 9'2"	54 sq. ft	Yes
3	WC	5'2" x 5'3"	20 sq. ft	Yes
4	Bedroom	16'7" x 11'5"	179 sq. ft	Yes
5	Garage	26'9" x 25'3"	616 sq. ft	No
6	Family Room	15'2" x 13'9"	178 sq. ft	Yes
7	Bedroom	12'1" x 11'6"	139 sq. ft	Yes
8	Bath	8'1" x 9'2"	65 sq. ft	Yes
9	Breakfast Nook	14'11" x 15'2"	226 sq. ft	Yes
10	WC	2'11" x 5'9"	17 sq. ft	Yes
11	Hall	3'10" x 6'0"	23 sq. ft	Yes

## Home report

**13750 Falcon Road, Atascadero, San Luis Obispo County,  
California, United States, 93422**

#		Max Dimensions	sqft	Included
12	Primary Bedroom	19'6" x 13'9"	267 sq. ft	Yes
13	Laundry	9'9" x 6'0"	58 sq. ft	Yes
14	Living Room	11'11" x 14'7"	173 sq. ft	Yes
15	Dining Area	11'11" x 12'9"	151 sq. ft	Yes
16	Primary Bath	13'3" x 9'2"	102 sq. ft	Yes

## Home report

13750 Falcon Road, Atascadero, San Luis Obispo County,  
California, United States, 93422

### 1 Floor 1 - Kitchen

---



Max Dimensions: 14'11" x 12'11"  
Calculated Area: 179 sq. ft  
Included: Yes

Heated: Yes  
Finished: Yes  
Enclosed: Yes  
Contiguous: Yes  
Permitted: Yes  
Wet space: No  
Addition: No  
Conversion: No

### 2 Floor 1 - W.I.C.

---



Max Dimensions: 5'10" x 9'2"  
Calculated Area: 54 sq. ft  
Included: Yes

Heated: Yes  
Finished: Yes  
Enclosed: Yes  
Contiguous: Yes  
Permitted: Yes  
Wet space: No  
Addition: No  
Conversion: No

## Home report

13750 Falcon Road, Atascadero, San Luis Obispo County,  
California, United States, 93422

### 3 Floor 1 - WC



Max Dimensions: 5'2" x 5'3"  
Calculated Area: 20 sq. ft  
Included: Yes

Heated: Yes  
Finished: Yes  
Enclosed: Yes  
Contiguous: Yes  
Permitted: Yes  
Wet space: Yes  
Addition: No  
Conversion: No

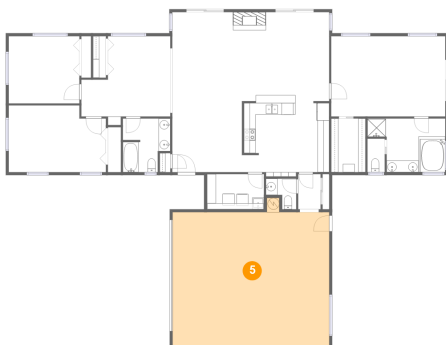
### 4 Floor 1 - Bedroom



Max Dimensions: 16'7" x 11'5"  
Calculated Area: 179 sq. ft  
Included: Yes

Heated: Yes  
Finished: Yes  
Enclosed: Yes  
Contiguous: Yes  
Permitted: Yes  
Wet space: No  
Addition: No  
Conversion: No

### 5 Floor 1 - Garage



Max Dimensions: 26'9" x 25'3"  
Calculated Area: 616 sq. ft  
Included: No

Heated: No  
Finished: No  
Enclosed: Yes  
Contiguous: Yes  
Permitted: Yes  
Wet space: No  
Addition: No  
Conversion: No

## Home report

13750 Falcon Road, Atascadero, San Luis Obispo County,  
California, United States, 93422

### 6 Floor 1 - Family Room



Max Dimensions: 15'2" x 13'9"  
Calculated Area: 178 sq. ft  
Included: Yes

Heated: Yes  
Finished: Yes  
Enclosed: Yes  
Contiguous: Yes  
Permitted: Yes  
Wet space: No  
Addition: No  
Conversion: No

### 7 Floor 1 - Bedroom



Max Dimensions: 12'1" x 11'6"  
Calculated Area: 139 sq. ft  
Included: Yes

Heated: Yes  
Finished: Yes  
Enclosed: Yes  
Contiguous: Yes  
Permitted: Yes  
Wet space: No  
Addition: No  
Conversion: No

### 8 Floor 1 - Bath



Max Dimensions: 8'1" x 9'2"  
Calculated Area: 65 sq. ft  
Included: Yes

Heated: Yes  
Finished: Yes  
Enclosed: Yes  
Contiguous: Yes  
Permitted: Yes  
Wet space: Yes  
Addition: No  
Conversion: No

## Home report

13750 Falcon Road, Atascadero, San Luis Obispo County,  
California, United States, 93422

### 9 Floor 1 - Breakfast Nook



Max Dimensions: 14'11" x 15'2"  
Calculated Area: 226 sq. ft  
Included: Yes

Heated: Yes  
Finished: Yes  
Enclosed: Yes  
Contiguous: Yes  
Permitted: Yes  
Wet space: No  
Addition: No  
Conversion: No

### 10 Floor 1 - WC



Max Dimensions: 2'11" x 5'9"  
Calculated Area: 17 sq. ft  
Included: Yes

Heated: Yes  
Finished: Yes  
Enclosed: Yes  
Contiguous: Yes  
Permitted: Yes  
Wet space: Yes  
Addition: No  
Conversion: No

### 11 Floor 1 - Hall



Max Dimensions: 3'10" x 6'0"  
Calculated Area: 23 sq. ft  
Included: Yes

Heated: Yes  
Finished: Yes  
Enclosed: Yes  
Contiguous: Yes  
Permitted: Yes  
Wet space: No  
Addition: No  
Conversion: No



## Home report

13750 Falcon Road, Atascadero, San Luis Obispo County,  
California, United States, 93422

### 12 Floor 1 - Primary Bedroom



Max Dimensions: 19'6" x 13'9"  
Calculated Area: 267 sq. ft  
Included: Yes

Heated: Yes  
Finished: Yes  
Enclosed: Yes  
Contiguous: Yes  
Permitted: Yes  
Wet space: No  
Addition: No  
Conversion: No

### 13 Floor 1 - Laundry



Max Dimensions: 9'9" x 6'0"  
Calculated Area: 58 sq. ft  
Included: Yes

Heated: Yes  
Finished: Yes  
Enclosed: Yes  
Contiguous: Yes  
Permitted: Yes  
Wet space: No  
Addition: No  
Conversion: No

### 14 Floor 1 - Living Room



Max Dimensions: 11'11" x 14'7"  
Calculated Area: 173 sq. ft  
Included: Yes

Heated: Yes  
Finished: Yes  
Enclosed: Yes  
Contiguous: Yes  
Permitted: Yes  
Wet space: No  
Addition: No  
Conversion: No

13750 Falcon Road, Atascadero, San Luis Obispo County,  
California, United States, 93422

15 Floor 1 - Dining Area



Max Dimensions: 11'11" x 12'9"  
Calculated Area: 151 sq. ft  
Included: Yes

Heated: Yes  
Finished: Yes  
Enclosed: Yes  
Contiguous: Yes  
Permitted: Yes  
Wet space: No  
Addition: No  
Conversion: No

16 Floor 1 - Primary Bath



Max Dimensions: 13'3" x 9'2"  
Calculated Area: 102 sq. ft  
Included: Yes

Heated: Yes  
Finished: Yes  
Enclosed: Yes  
Contiguous: Yes  
Permitted: Yes  
Wet space: Yes  
Addition: No  
Conversion: No