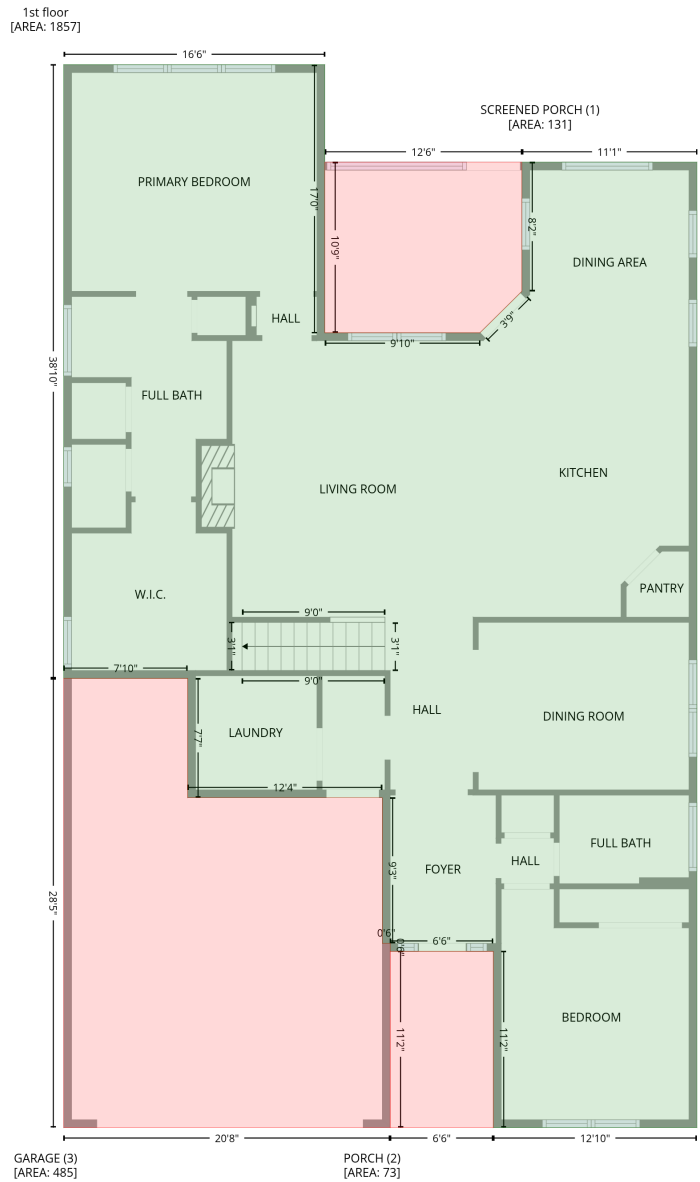


4048 Home Grown Way, Five Points, Clover, York County, South Carolina, United States, 29710

Gross Living Area: 2622 sq. ft

Level 1



Space	Area (sq. ft)	Calculation
1st floor (Living area)	1857	Coordinate Polygon Area Algorithm using inches $-((209.9 + 209.9) * (9 - 212.5) + (209.9 + 327.6) * (212.5 - 212.5) + (327.6 + 359.4) * (212.5 - 181) + (359.4 + 359.4) * (181 - 83) + (359.4 + 492.2) * (83 - 83) + (492.2 + 492.2) * (83 - 815.7) + (492.2 + 337.8) * (815.7 - 815.7) + (337.8 + 337.8) * (815.7 - 681.9) + (337.8 + 259.5) * (681.9 - 681.9) + (259.5 + 259.5) * (681.9 - 675.9) + (259.5 + 253.5) * (675.9 - 675.9) + (253.5 + 253.5) * (675.9 - 565.4) + (253.5 + 105.9) * (565.4 - 565.4) + (105.9 + 105.9) * (565.4 - 474.8) + (105.9 + 11.8) * (474.8 - 474.8) + (11.8 + 11.8) * (474.8 - 9) + (11.8 + 209.9) * (9 - 9)) * 0.5 * 0.00694$

4048 Home Grown Way, Five Points, Clover, York County, South Carolina, United States, 29710

Gross Living Area: 2622 sq. ft

Level 1

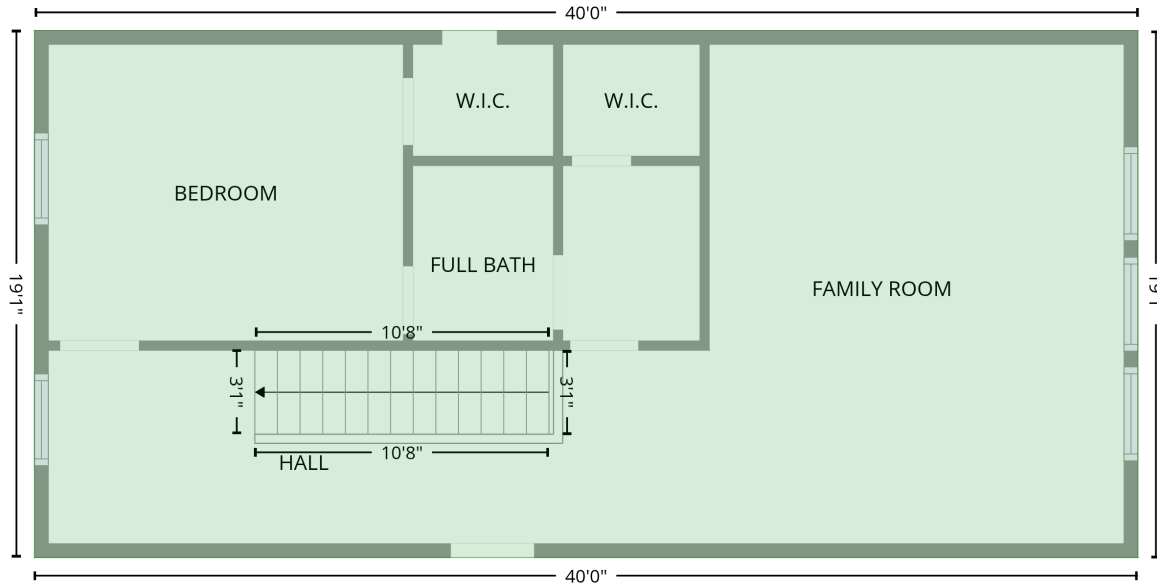
Space	Area (sq. ft)	Calculation <small>Coordinate Polygon Area Algorithm using inches</small>
SCREENED PORCH (Non-living area)	131	$-((359.4 + 359.4) * (83 - 181) + (359.4 + 327.6) * (181 - 212.5) + (327.6 + 209.9) * (212.5 - 212.5) + (209.9 + 209.9) * (212.5 - 83) + (209.9 + 359.4) * (83 - 83)) * 0.5 * 0.00694$
PORCH (Non-living area)	73	$-((337.8 + 337.8) * (681.9 - 815.7) + (337.8 + 259.5) * (815.7 - 815.7) + (259.5 + 259.5) * (815.7 - 681.9) + (259.5 + 337.8) * (681.9 - 681.9)) * 0.5 * 0.00694$
GARAGE (Non-living area)	485	$-((105.9 + 105.9) * (474.8 - 565.4) + (105.9 + 253.5) * (565.4 - 565.4) + (253.5 + 253.5) * (565.4 - 675.9) + (253.5 + 259.5) * (675.9 - 675.9) + (259.5 + 259.5) * (675.9 - 815.7) + (259.5 + 11.8) * (815.7 - 815.7) + (11.8 + 11.8) * (815.7 - 474.8) + (11.8 + 105.9) * (474.8 - 474.8)) * 0.5 * 0.00694$

4048 Home Grown Way, Five Points, Clover, York County, South Carolina, United States, 29710

Gross Living Area: 2622 sq. ft

Level 2

2nd floor
[AREA: 765]



Space	Area (sq. ft)	Calculation <small>Coordinate Polygon Area Algorithm using inches</small>
2nd floor (Living area)	765	$-((492.2 + 492.2) * (293.2 - 522.4) + (492.2 + 11.8) * (522.4 - 522.4) + (11.8 + 11.8) * (522.4 - 293.2) + (11.8 + 492.2) * (293.2 - 293.2)) * 0.5 * 0.00694$