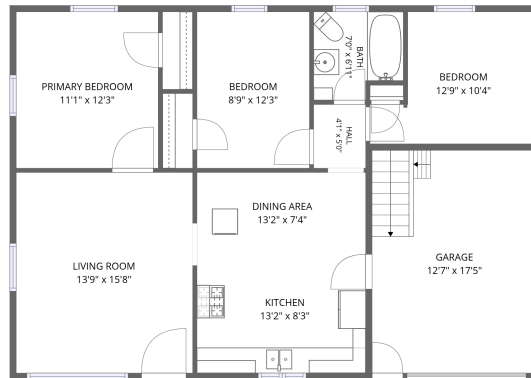
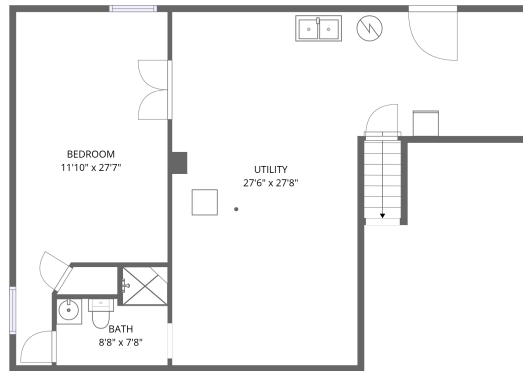


Home data report

214 Osborn St, Newark, NY, US



1st floor



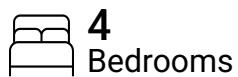
Basement

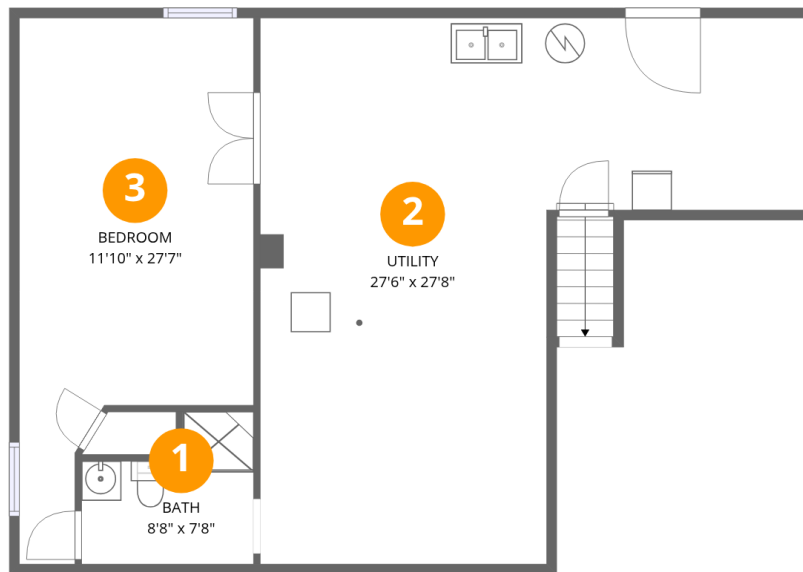
Total Area: 905 sq. ft

Basement: 0 sq. ft, 1st Floor: 905 sq. ft

Excluded: Bedroom 280 sq. ft, Undefined 22 sq. ft, Bath 57 sq. ft, Utility 528 sq. ft, Garage 219 sq. ft, Walls: 153 sq. ft

Property summary





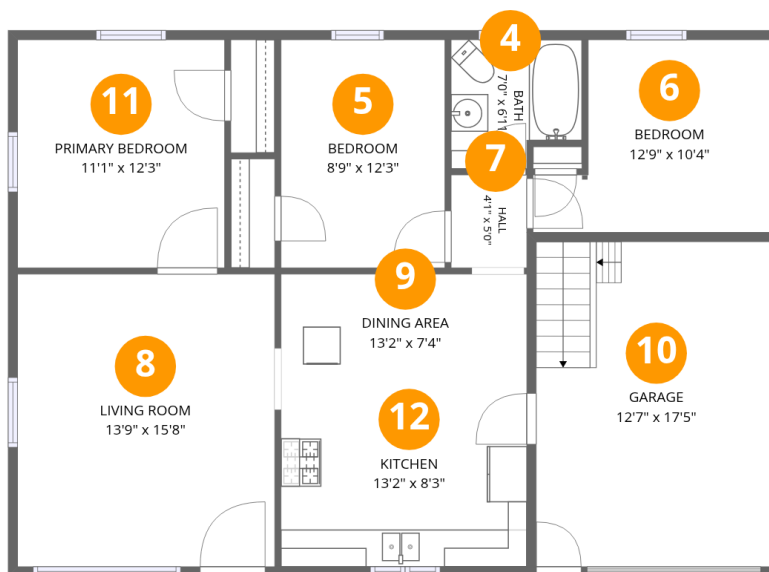
Room dimensions

Floor 1 Below grade

Total: 0 sqft

Excluded: 887 sqft

#		Dimensions	sqft	Counted as living area
1	Bath	8'8" x 7'8"	54 sq. ft	No
2	Utility	27'6" x 27'8"	528 sq. ft	No
3	Bedroom	11'10" x 27'7"	257 sq. ft	No



Room dimensions

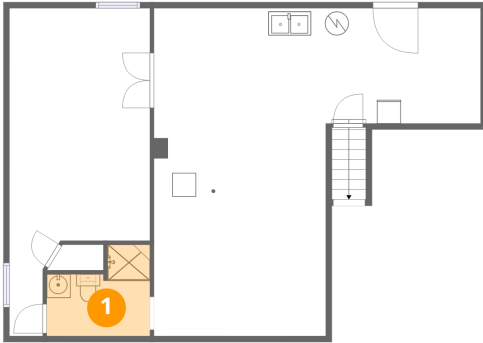
Floor 2

Total:905sqft

Excluded: 219sqft

#		Dimensions	sqft	Counted as living area
4	Bath	7'0" x 6'11"	44 sq. ft	Yes
5	Bedroom	8'9" x 12'3"	107 sq. ft	Yes
6	Bedroom	12'9" x 10'4"	110 sq. ft	Yes
7	Hall	4'1" x 5'0"	20 sq. ft	Yes
8	Living Room	13'9" x 15'8"	216 sq. ft	Yes
9	Dining Area	13'2" x 7'4"	97 sq. ft	Yes
10	Garage	12'7" x 17'5"	219 sq. ft	No
11	Primary Bedroom	11'1" x 12'3"	136 sq. ft	Yes
12	Kitchen	13'2" x 8'3"	109 sq. ft	Yes

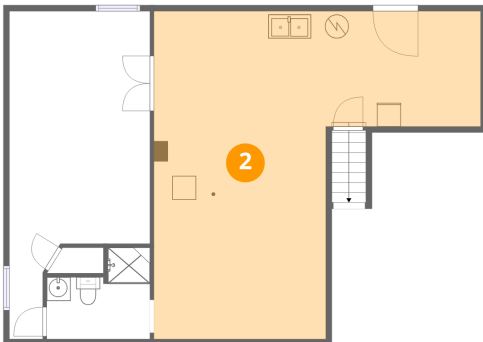
1 Floor 1 - Bath



Dimensions: 8'8" x 7'8"
Area: 54 sq. ft
Counted as living area: No

Heated: Yes
Finished: No
Enclosed: Yes
Contiguous: Yes
Permitted: Yes
Wet space: Yes
Addition: No
Conversion: No

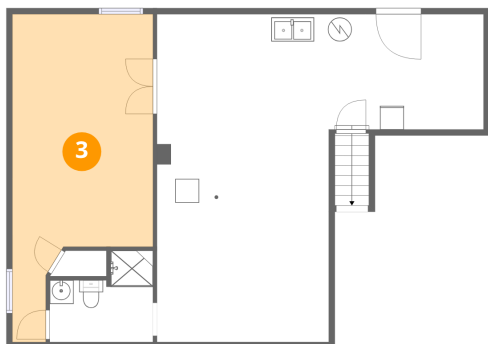
2 Floor 1 - Utility



Dimensions: 27'6" x 27'8"
Area: 528 sq. ft
Counted as living area: No

Heated: Yes
Finished: No
Enclosed: Yes
Contiguous: Yes
Permitted: Yes
Wet space: No
Addition: No
Conversion: No

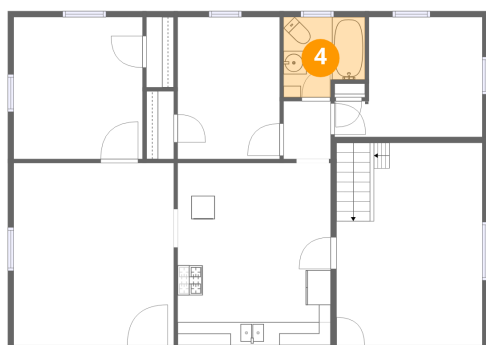
3 Floor 1 - Bedroom



Dimensions: 11'10" x 27'7"
Area: 257 sq. ft
Counted as living area: No

Heated: Yes
Finished: No
Enclosed: Yes
Contiguous: Yes
Permitted: Yes
Wet space: No
Addition: No
Conversion: No

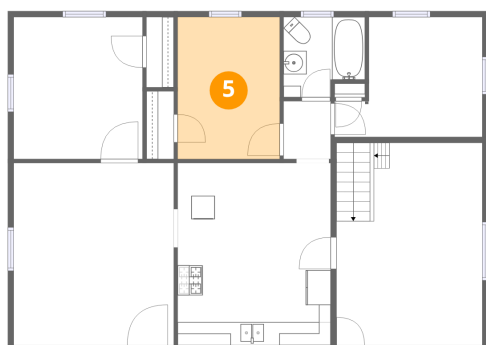
4 Floor 2 - Bath



Dimensions: 7'0" x 6'11"
Area: 44 sq. ft
Counted as living area: Yes

Heated: Yes
Finished: Yes
Enclosed: Yes
Contiguous: Yes
Permitted: Yes
Wet space: Yes
Addition: No
Conversion: No

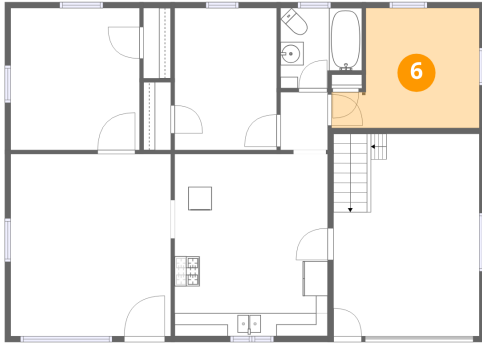
5 Floor 2 - Bedroom



Dimensions: 8'9" x 12'3"
Area: 107 sq. ft
Counted as living area: Yes

Heated: Yes
Finished: Yes
Enclosed: Yes
Contiguous: Yes
Permitted: Yes
Wet space: No
Addition: No
Conversion: No

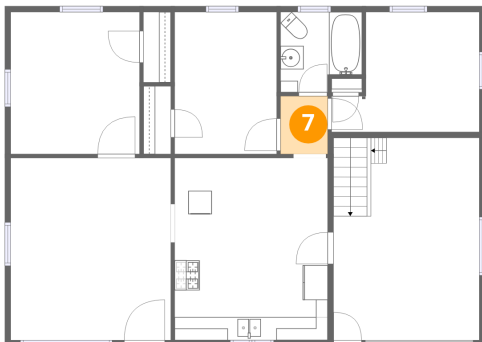
6 Floor 2 - Bedroom



Dimensions: 12'9" x 10'4"
Area: 110 sq. ft
Counted as living area: Yes

Heated: Yes
Finished: Yes
Enclosed: Yes
Contiguous: Yes
Permitted: Yes
Wet space: No
Addition: No
Conversion: No

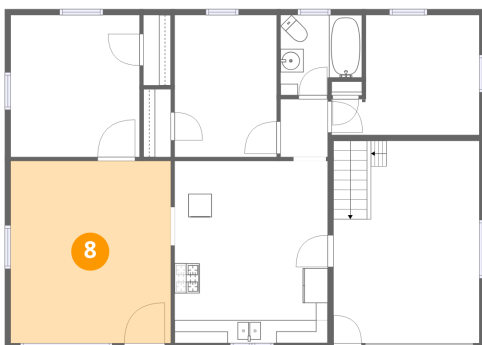
7 Floor 2 - Hall



Dimensions: 4'1" x 5'0"
Area: 20 sq. ft
Counted as living area: Yes

Heated: Yes
Finished: Yes
Enclosed: Yes
Contiguous: Yes
Permitted: Yes
Wet space: No
Addition: No
Conversion: No

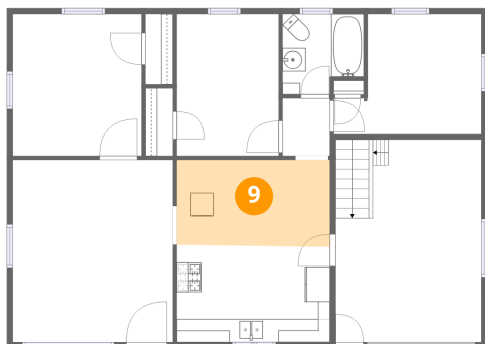
8 Floor 2 - Living Room



Dimensions: 13'9" x 15'8"
Area: 216 sq. ft
Counted as living area: Yes

Heated: Yes
Finished: Yes
Enclosed: Yes
Contiguous: Yes
Permitted: Yes
Wet space: No
Addition: No
Conversion: No

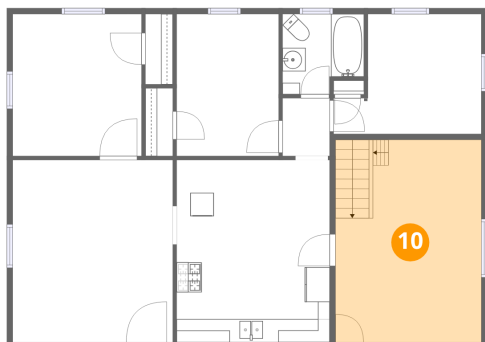
9 Floor 2 - Dining Area



Dimensions: 13'2" x 7'4"
Area: 97 sq. ft
Counted as living area: Yes

Heated: Yes
Finished: Yes
Enclosed: Yes
Contiguous: Yes
Permitted: Yes
Wet space: No
Addition: No
Conversion: No

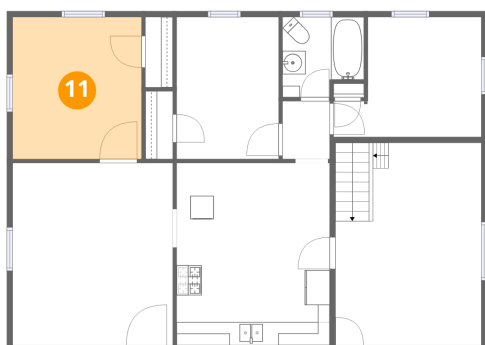
10 Floor 2 - Garage



Dimensions: 12'7" x 17'5"
Area: 219 sq. ft
Counted as living area: No

Heated: No
Finished: No
Enclosed: Yes
Contiguous: Yes
Permitted: Yes
Wet space: No
Addition: No
Conversion: No

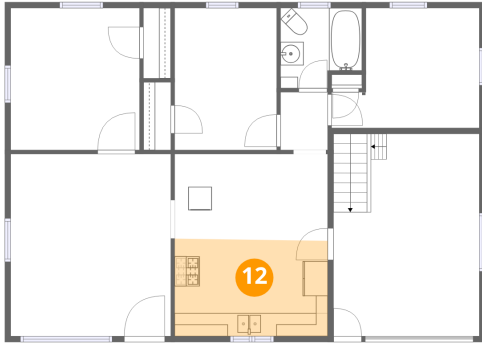
11 Floor 2 - Primary Bedroom



Dimensions: 11'1" x 12'3"
Area: 136 sq. ft
Counted as living area: Yes

Heated: Yes
Finished: Yes
Enclosed: Yes
Contiguous: Yes
Permitted: Yes
Wet space: No
Addition: No
Conversion: No

12 Floor 2 - Kitchen



Dimensions: 13'2" x 8'3"
Area: 109 sq. ft
Counted as living area: Yes

Heated: Yes
Finished: Yes
Enclosed: Yes
Contiguous: Yes
Permitted: Yes
Wet space: No
Addition: No
Conversion: No