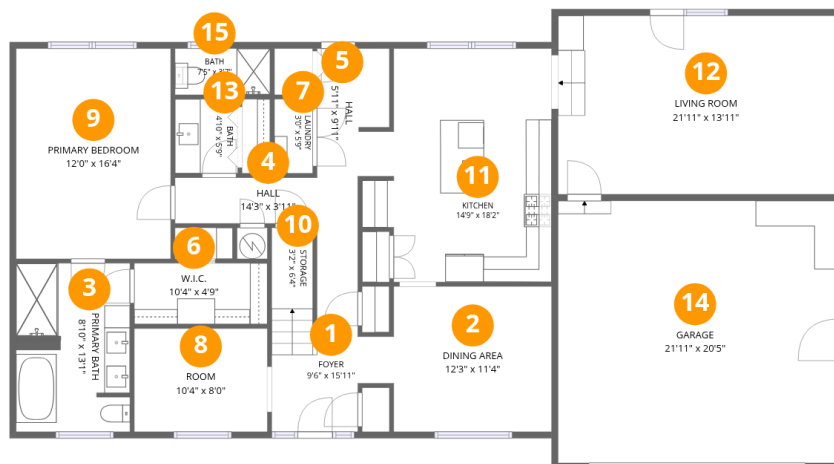




Home data report

500 8th Street, Lawrenceburg, Lawrence County, Tennessee, United States, 38464



## Room dimensions

Floor 1

Total:1533sqft Excluded: 468sqft

#		Dimensions	sqft	Counted as living area
1	Foyer	9'6" x 15'11"	95 sq. ft	Yes
2	Dining Area	12'3" x 11'4"	139 sq. ft	Yes
3	Primary Bath	8'10" x 13'1"	114 sq. ft	Yes
4	Hall	14'3" x 3'11"	52 sq. ft	Yes
5	Hall	5'11" x 9'11"	56 sq. ft	Yes
6	W.I.C.	10'4" x 4'9"	49 sq. ft	Yes
7	Laundry	3'0" x 5'9"	17 sq. ft	Yes
8	Room	10'4" x 8'0"	83 sq. ft	Yes
9	Primary Bedroom	12'0" x 16'4"	197 sq. ft	Yes
10	Storage	3'2" x 6'4"	20 sq. ft	No
11	Kitchen	14'9" x 18'2"	232 sq. ft	Yes

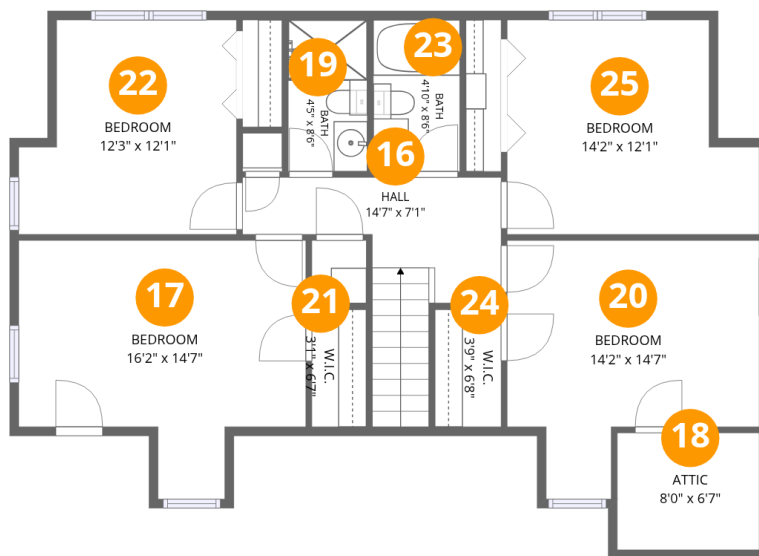
Home data report

**500 8th Street, Lawrenceburg, Lawrence County, Tennessee,  
United States, 38464**

#		Dimensions	sqft	Counted as living area
12	Living Room	21'11" x 13'11"	305 sq. ft	Yes
13	Bath	4'10" x 5'9"	28 sq. ft	Yes
14	Garage	21'11" x 20'5"	448 sq. ft	No
15	Bath	7'5" x 3'7"	27 sq. ft	Yes

Home data report

500 8th Street, Lawrenceburg, Lawrence County, Tennessee, United States, 38464



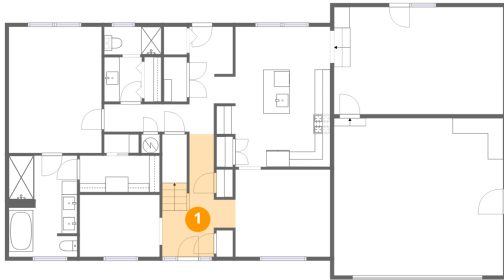
## Room dimensions

Floor 2

Total:953sqft Excluded: 53sqft

#		Dimensions	sqft	Counted as living area
16	Hall	14'7" x 7'1"	97 sq. ft	Yes
17	Bedroom	16'2" x 14'7"	185 sq. ft	Yes
18	Attic	8'0" x 6'7"	53 sq. ft	No
19	Bath	4'5" x 8'6"	38 sq. ft	Yes
20	Bedroom	14'2" x 14'7"	164 sq. ft	Yes
21	W.I.C.	3'1" x 6'7"	20 sq. ft	Yes
22	Bedroom	12'3" x 12'1"	133 sq. ft	Yes
23	Bath	4'10" x 8'6"	42 sq. ft	Yes
24	W.I.C.	3'9" x 6'8"	25 sq. ft	Yes
25	Bedroom	14'2" x 12'1"	151 sq. ft	Yes

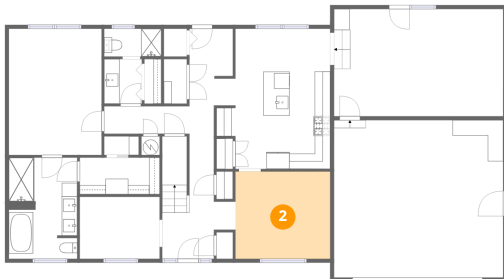
## 1 Floor 1 - Foyer



Dimensions: 9'6" x 15'11"  
Area: 95 sq. ft  
Counted as living area: Yes

Heated: Yes  
Finished: Yes  
Enclosed: Yes  
Contiguous: Yes  
Permitted: Yes  
Wet space: No  
Addition: No  
Conversion: No

## 2 Floor 1 - Dining Area



Dimensions: 12'3" x 11'4"  
Area: 139 sq. ft  
Counted as living area: Yes

Heated: Yes  
Finished: Yes  
Enclosed: Yes  
Contiguous: Yes  
Permitted: Yes  
Wet space: No  
Addition: No  
Conversion: No

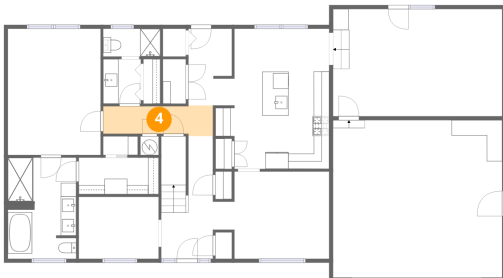
**3** Floor 1 - Primary Bath



Dimensions: 8'10" x 13'1"  
Area: 114 sq. ft  
Counted as living area: Yes

Heated: Yes  
Finished: Yes  
Enclosed: Yes  
Contiguous: Yes  
Permitted: Yes  
Wet space: Yes  
Addition: No  
Conversion: No

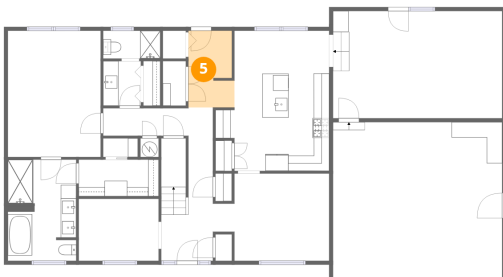
**4** Floor 1 - Hall



Dimensions: 14'3" x 3'11"  
Area: 52 sq. ft  
Counted as living area: Yes

Heated: Yes  
Finished: Yes  
Enclosed: Yes  
Contiguous: Yes  
Permitted: Yes  
Wet space: No  
Addition: No  
Conversion: No

**5** Floor 1 - Hall

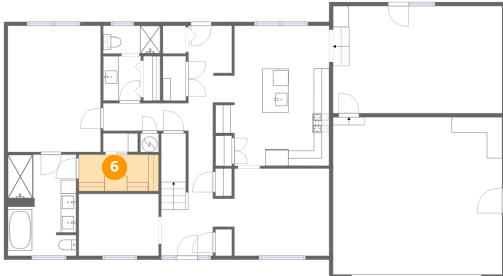


Dimensions: 5'11" x 9'11"  
Area: 56 sq. ft  
Counted as living area: Yes

Heated: Yes  
Finished: Yes  
Enclosed: Yes  
Contiguous: Yes  
Permitted: Yes  
Wet space: No  
Addition: No  
Conversion: No

500 8th Street, Lawrenceburg, Lawrence County, Tennessee,  
United States, 38464

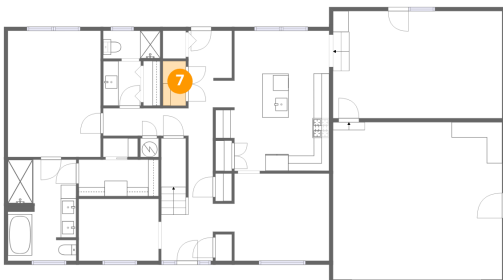
### 6 Floor 1 - W.I.C.



Dimensions: 10'4" x 4'9"  
Area: 49 sq. ft  
Counted as living area: Yes

Heated: Yes  
Finished: Yes  
Enclosed: Yes  
Contiguous: Yes  
Permitted: Yes  
Wet space: No  
Addition: No  
Conversion: No

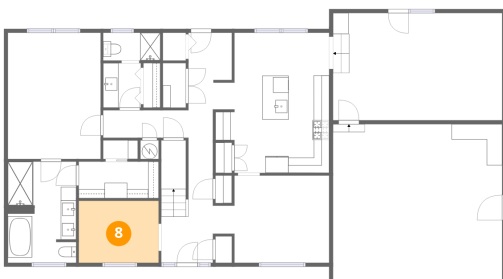
### 7 Floor 1 - Laundry



Dimensions: 3'0" x 5'9"  
Area: 17 sq. ft  
Counted as living area: Yes

Heated: Yes  
Finished: Yes  
Enclosed: Yes  
Contiguous: Yes  
Permitted: Yes  
Wet space: No  
Addition: No  
Conversion: No

### 8 Floor 1 - Room



Dimensions: 10'4" x 8'0"  
Area: 83 sq. ft  
Counted as living area: Yes

Heated: Yes  
Finished: Yes  
Enclosed: Yes  
Contiguous: Yes  
Permitted: Yes  
Wet space: No  
Addition: No  
Conversion: No

500 8th Street, Lawrenceburg, Lawrence County, Tennessee,  
United States, 38464

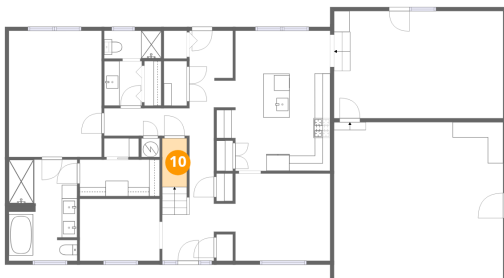
### 9 Floor 1 - Primary Bedroom



Dimensions: 12'0" x 16'4"  
Area: 197 sq. ft  
Counted as living area: Yes

Heated: Yes  
Finished: Yes  
Enclosed: Yes  
Contiguous: Yes  
Permitted: Yes  
Wet space: No  
Addition: No  
Conversion: No

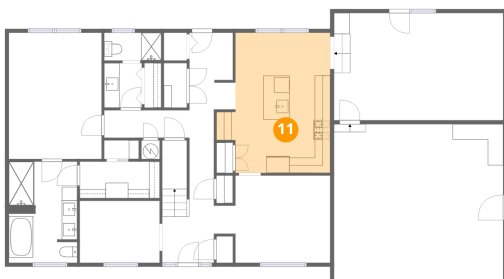
### 10 Floor 1 - Storage



Dimensions: 3'2" x 6'4"  
Area: 20 sq. ft  
Counted as living area: No

Heated: No  
Finished: Yes  
Enclosed: No  
Contiguous: Yes  
Permitted: Yes  
Wet space: No  
Addition: No  
Conversion: No

### 11 Floor 1 - Kitchen



Dimensions: 14'9" x 18'2"  
Area: 232 sq. ft  
Counted as living area: Yes

Heated: Yes  
Finished: Yes  
Enclosed: Yes  
Contiguous: Yes  
Permitted: Yes  
Wet space: No  
Addition: No  
Conversion: No

## 12 Floor 1 - Living Room



Dimensions: 21'11" x 13'11"

Area: 305 sq. ft

Counted as living area: Yes

Heated: Yes

Finished: Yes

Enclosed: Yes

Contiguous: Yes

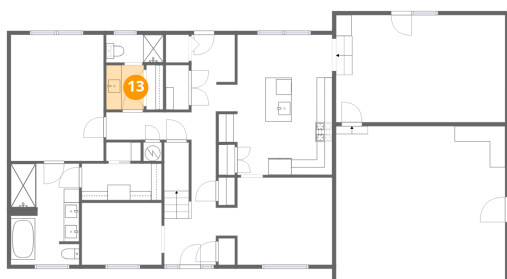
Permitted: Yes

Wet space: No

Addition: No

Conversion: No

## 13 Floor 1 - Bath



Dimensions: 4'10" x 5'9"

Area: 28 sq. ft

Counted as living area: Yes

Heated: Yes

Finished: Yes

Enclosed: Yes

Contiguous: Yes

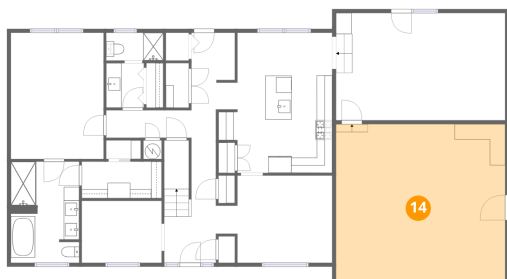
Permitted: Yes

Wet space: Yes

Addition: No

Conversion: No

## 14 Floor 1 - Garage



Dimensions: 21'11" x 20'5"

Area: 448 sq. ft

Counted as living area: No

Heated: No

Finished: No

Enclosed: Yes

Contiguous: Yes

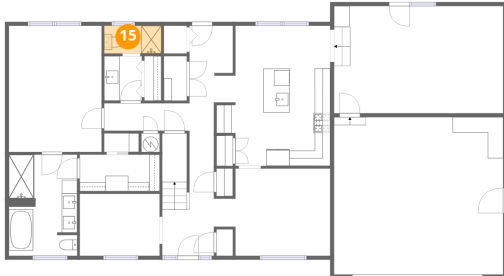
Permitted: Yes

Wet space: No

Addition: No

Conversion: No

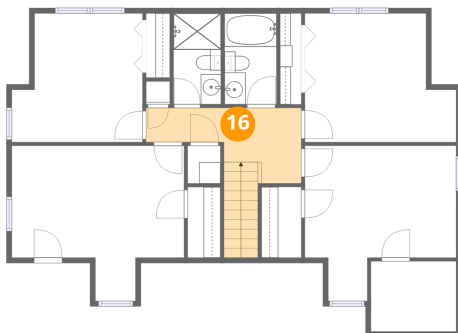
**15** Floor 1 - Bath



Dimensions: 7'5" x 3'7"  
Area: 27 sq. ft  
Counted as living area: Yes

Heated: Yes  
Finished: Yes  
Enclosed: Yes  
Contiguous: Yes  
Permitted: Yes  
Wet space: Yes  
Addition: No  
Conversion: No

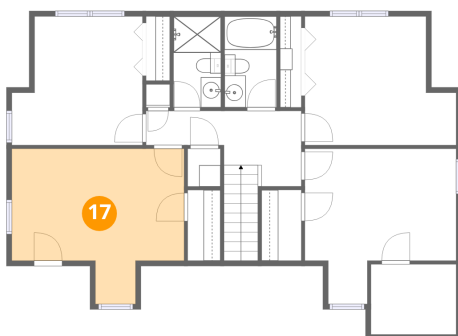
**16** Floor 2 - Hall



Dimensions: 14'7" x 7'1"  
Area: 97 sq. ft  
Counted as living area: Yes

Heated: Yes  
Finished: Yes  
Enclosed: Yes  
Contiguous: Yes  
Permitted: Yes  
Wet space: No  
Addition: No  
Conversion: No

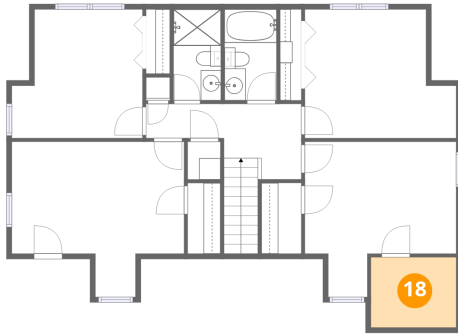
**17** Floor 2 - Bedroom



Dimensions: 16'2" x 14'7"  
Area: 185 sq. ft  
Counted as living area: Yes

Heated: Yes  
Finished: Yes  
Enclosed: Yes  
Contiguous: Yes  
Permitted: Yes  
Wet space: No  
Addition: No  
Conversion: No

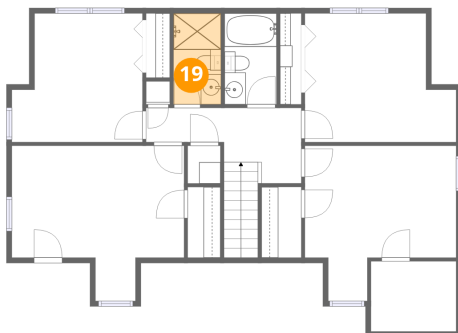
**18** Floor 2 - Attic



Dimensions: 8'0" x 6'7"  
Area: 53 sq. ft  
Counted as living area: No

Heated: No  
Finished: No  
Enclosed: Yes  
Contiguous: Yes  
Permitted: Yes  
Wet space: No  
Addition: No  
Conversion: No

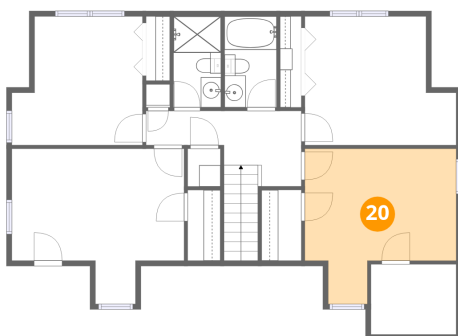
**19** Floor 2 - Bath



Dimensions: 4'5" x 8'6"  
Area: 38 sq. ft  
Counted as living area: Yes

Heated: Yes  
Finished: Yes  
Enclosed: Yes  
Contiguous: Yes  
Permitted: Yes  
Wet space: Yes  
Addition: No  
Conversion: No

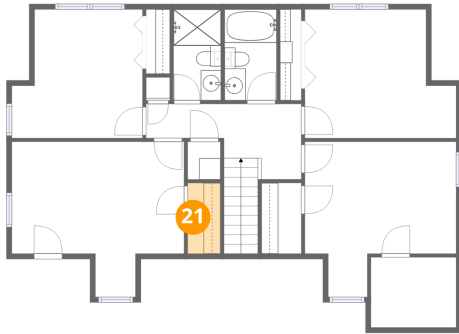
**20** Floor 2 - Bedroom



Dimensions: 14'2" x 14'7"  
Area: 164 sq. ft  
Counted as living area: Yes

Heated: Yes  
Finished: Yes  
Enclosed: Yes  
Contiguous: Yes  
Permitted: Yes  
Wet space: No  
Addition: No  
Conversion: No

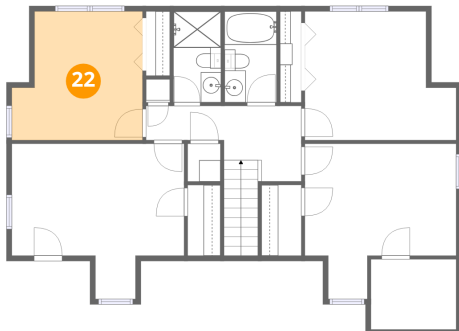
**21** Floor 2 - W.I.C.



Dimensions: 3'1" x 6'7"  
Area: 20 sq. ft  
Counted as living area: No

Heated: Yes  
Finished: Yes  
Enclosed: Yes  
Contiguous: Yes  
Permitted: Yes  
Wet space: No  
Addition: No  
Conversion: No

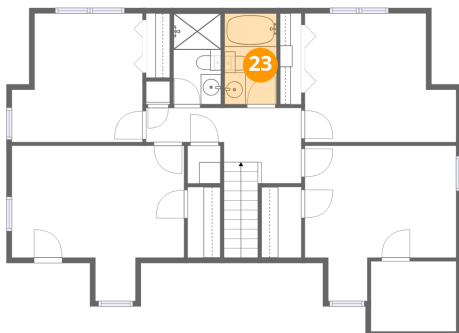
**22** Floor 2 - Bedroom



Dimensions: 12'3" x 12'1"  
Area: 133 sq. ft  
Counted as living area: Yes

Heated: Yes  
Finished: Yes  
Enclosed: Yes  
Contiguous: Yes  
Permitted: Yes  
Wet space: No  
Addition: No  
Conversion: No

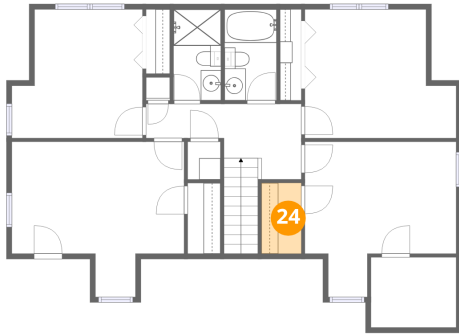
**23** Floor 2 - Bath



Dimensions: 4'10" x 8'6"  
Area: 42 sq. ft  
Counted as living area: Yes

Heated: Yes  
Finished: Yes  
Enclosed: Yes  
Contiguous: Yes  
Permitted: Yes  
Wet space: Yes  
Addition: No  
Conversion: No

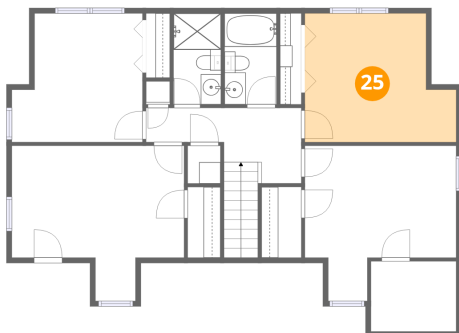
**24** Floor 2 - W.I.C.



Dimensions: 3'9" x 6'8"  
Area: 25 sq. ft  
Counted as living area: No

Heated: Yes  
Finished: Yes  
Enclosed: Yes  
Contiguous: Yes  
Permitted: Yes  
Wet space: No  
Addition: No  
Conversion: No

**25** Floor 2 - Bedroom



Dimensions: 14'2" x 12'1"  
Area: 151 sq. ft  
Counted as living area: Yes

Heated: Yes  
Finished: Yes  
Enclosed: Yes  
Contiguous: Yes  
Permitted: Yes  
Wet space: No  
Addition: No  
Conversion: No