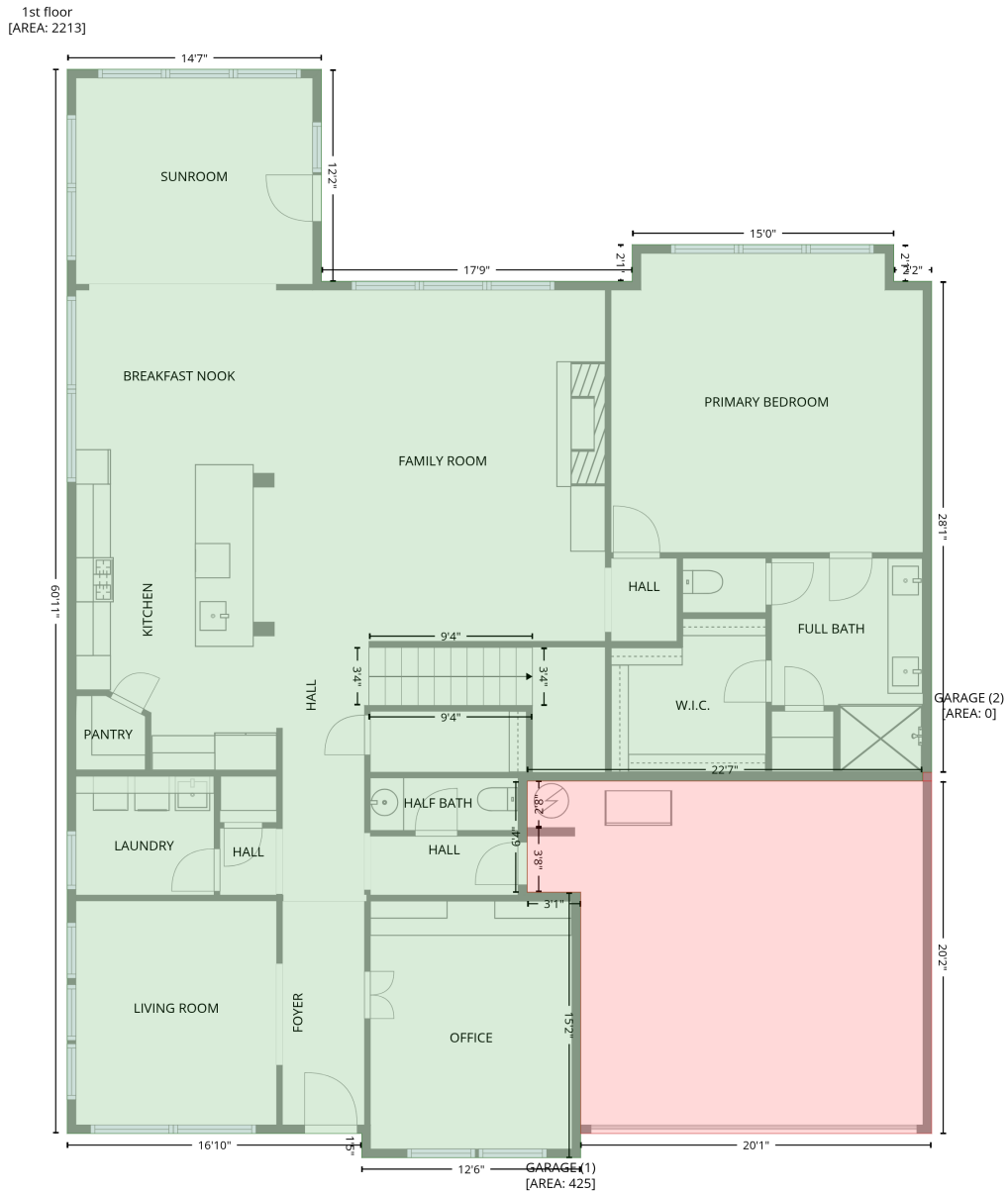


# 1548 Afton Way, Brayden, Fort Mill, York County, South Carolina, United States, 29708

Gross Living Area: 3627 sq. ft

## Level 1



| Space                      | Area (sq. ft) | Calculation  |
|----------------------------|---------------|--|
| 1st floor<br>(Living area) | 2213          | Coordinate Polygon Area Algorithm using inches<br>$-((-1.3 + 173.2) * (-4 - -4) + (173.2 + 173.2) * (-4 - 141.6) + (173.2 + 386.5) * (141.6 - 141.6) + (386.5 + 386.5) * (141.6 - 116.4) + (386.5 + 566.1) * (116.4 - 116.4) + (566.1 + 566.1) * (116.4 - 141.6) + (566.1 + 592.1) * (141.6 - 141.6) + (592.1 + 592.1) * (141.6 - 479) + (592.1 + 586.1) * (479 - 479) + (586.1 + 585.8) * (479 - 479) + (585.8 + 585.8) * (479 - 484.9) + (585.8 + 314.6) * (484.9 - 484.9) + (314.6 + 314.5) * (484.9 - 561.4) + (314.5 + 351.2) * (561.4 - 561.4) + (351.2 + 351.2) * (561.4 - 743.7) + (351.2 + 200.9) * (743.7 - 743.7) + (200.9 + 200.9) * (743.7 - 727.2) + (200.9 + -1.3) * (727.2 - 727.2) + (-1.3 + -1.3) * (727.2 - -4)) * 0.5 * 0.00694$ |

# 1548 Afton Way, Brayden, Fort Mill, York County, South Carolina, United States, 29708

Gross Living Area: 3627 sq. ft

## Level 1

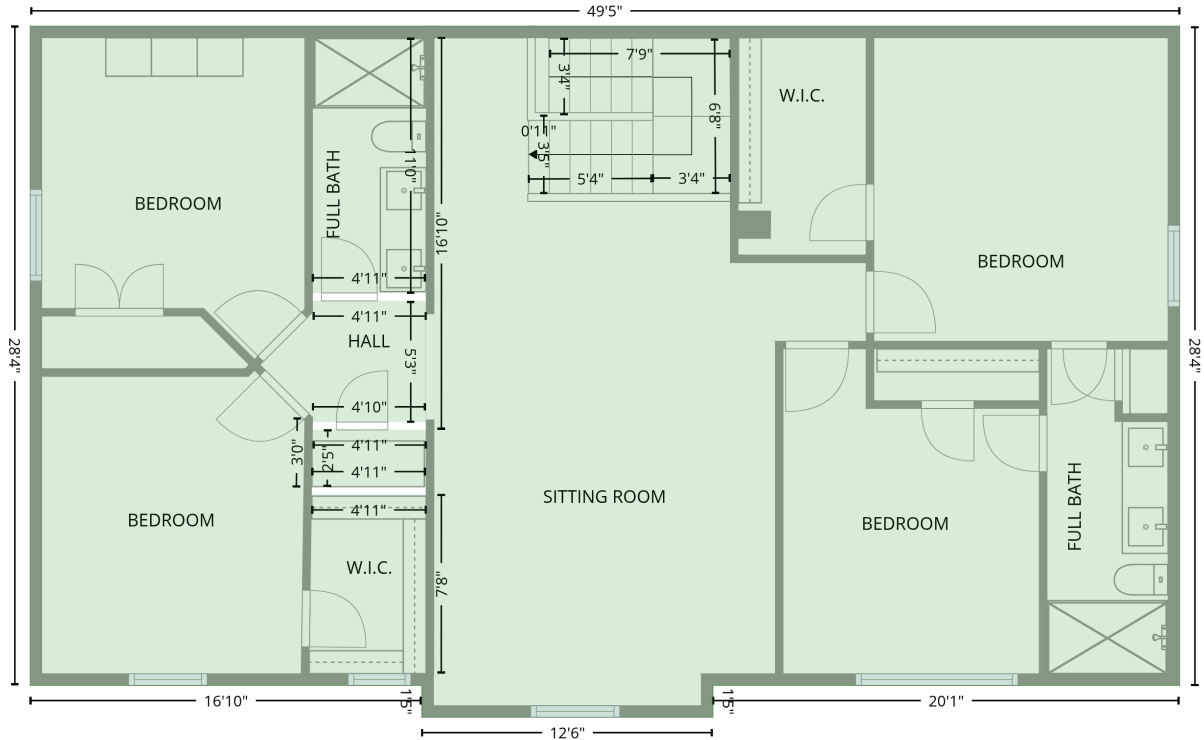
| Space                       | Area (sq. ft) | Calculation <small>Coordinate Polygon Area Algorithm using inches</small>   |
|-----------------------------|---------------|---|
| GARAGE<br>(Non-living area) | 425           | $-\left((592.1 + 592.1) * (484.9 - 727.2) + (592.1 + 351.2) * (727.2 - 727.2) + (351.2 + 351.2) * (727.2 - 561.4) + (351.2 + 314.5) * (561.4 - 561.4) + (314.5 + 314.5) * (561.4 - 516.9) + (314.5 + 314.6) * (516.9 - 484.9) + (314.6 + 592.1) * (484.9 - 484.9)\right) * 0.5 * 0.00694$ |
| GARAGE<br>(Non-living area) | 0             | $-\left((592.1 + 592.1) * (479 - 484.9) + (592.1 + 586.1) * (484.9 - 484.9) + (586.1 + 586.1) * (484.9 - 479) + (586.1 + 592.1) * (479 - 479)\right) * 0.5 * 0.00694$   |

# 1548 Afton Way, Brayden, Fort Mill, York County, South Carolina, United States, 29708

Gross Living Area: 3627 sq. ft

## Level 2

2nd floor  
[AREA: 1414]



| Space                      | Area (sq. ft) | Calculation   |
|----------------------------|---------------|---|
| 2nd floor<br>(Living area) | 1414          | Coordinate Polygon Area Algorithm using inches<br>$-((592.1 + 592.1) * (386.9 - 727.2) + (592.1 + 351.2) * (727.2 - 727.2) + (351.2 + 351.2) * (727.2 - 743.7) + (351.2 + 200.9) * (743.7 - 743.7) + (200.9 + 200.9) * (743.7 - 727.2) + (200.9 + -1.3) * (727.2 - 727.2) + (-1.3 + -1.3) * (727.2 - 386.9) + (-1.3 + 592.1) * (386.9 - 386.9)) * 0.5 * 0.00694 +$ $-((203.1 + 203.1) * (721.1 - 628.7) + (203.1 + 203.1) * (628.7 - 624.7) + (203.1 + 144.2) * (624.7 - 624.7) + (144.2 + 144.5) * (624.7 - 595.3) + (144.5 + 203.1) * (595.3 - 595.3) + (203.1 + 203.2) * (595.3 - 392.9) + (203.2 + 203.1) * (392.9 - 392.9) + (203.1 + 203.1) * (392.9 - 524.7) + (203.1 + 144.5) * (524.7 - 524.7) + (144.5 + 144.5) * (524.7 - 528.7) + (144.5 + 203.1) * (528.7 - 528.7) + (203.1 + 203.1) * (528.7 - 591.3) + (203.1 + 144.6) * (591.3 - 591.3) + (144.6 + 144.6) * (591.3 - 588.9) + (144.6 + 144.5) * (588.9 - 589) + (144.5 + 144) * (589 - 624.8) + (144 + 144) * (624.8 - 626.8) + (144 + 143.8) * (626.8 - 628.7) + (143.8 + 203.1) * (628.7 - 628.7) + (203.1 + 203.1) * (628.7 - 721.1)) * 0.5 * 0.00694$ |