

# 142 Oak Brook Circle, Madison, Madison County, Alabama, United States, 35758

Gross Living Area: 2894 sq. ft

## Level 1



Space	Area (sq. ft)	Calculation
1st floor (Living area)	1864	Coordinate Polygon Area Algorithm using inches $-((626.3 + 626.3) * (142.4 - 548.9) + (626.3 + 366.8) * (548.9 - 548.9) + (366.8 + 366.8) * (548.9 - 553.4) + (366.8 + 357.3) * (553.4 - 553.4) + (357.3 + 357.3) * (553.4 - 563) + (357.3 + 176.3) * (563 - 563) + (176.3 + 176.3) * (563 - 604.7) + (176.3 + -3) * (604.7 - 604.7) + (-3 + -3) * (604.7 - 142.4) + (-3 + 626.3) * (142.4 - 142.4)) * 0.5 * 0.00694$
GARAGE (Non-living area)	483	$-((626.3 + 626.3) * (548.9 - 807.9) + (626.3 + 357.3) * (807.9 - 807.9) + (357.3 + 357.3) * (807.9 - 553.4) + (357.3 + 366.8) * (553.4 - 553.4) + (366.8 + 366.8) * (553.4 - 548.9) + (366.8 + 626.3) * (548.9 - 548.9)) * 0.5 * 0.00694$

# 142 Oak Brook Circle, Madison, Madison County, Alabama, United States, 35758

Gross Living Area: 2894 sq. ft

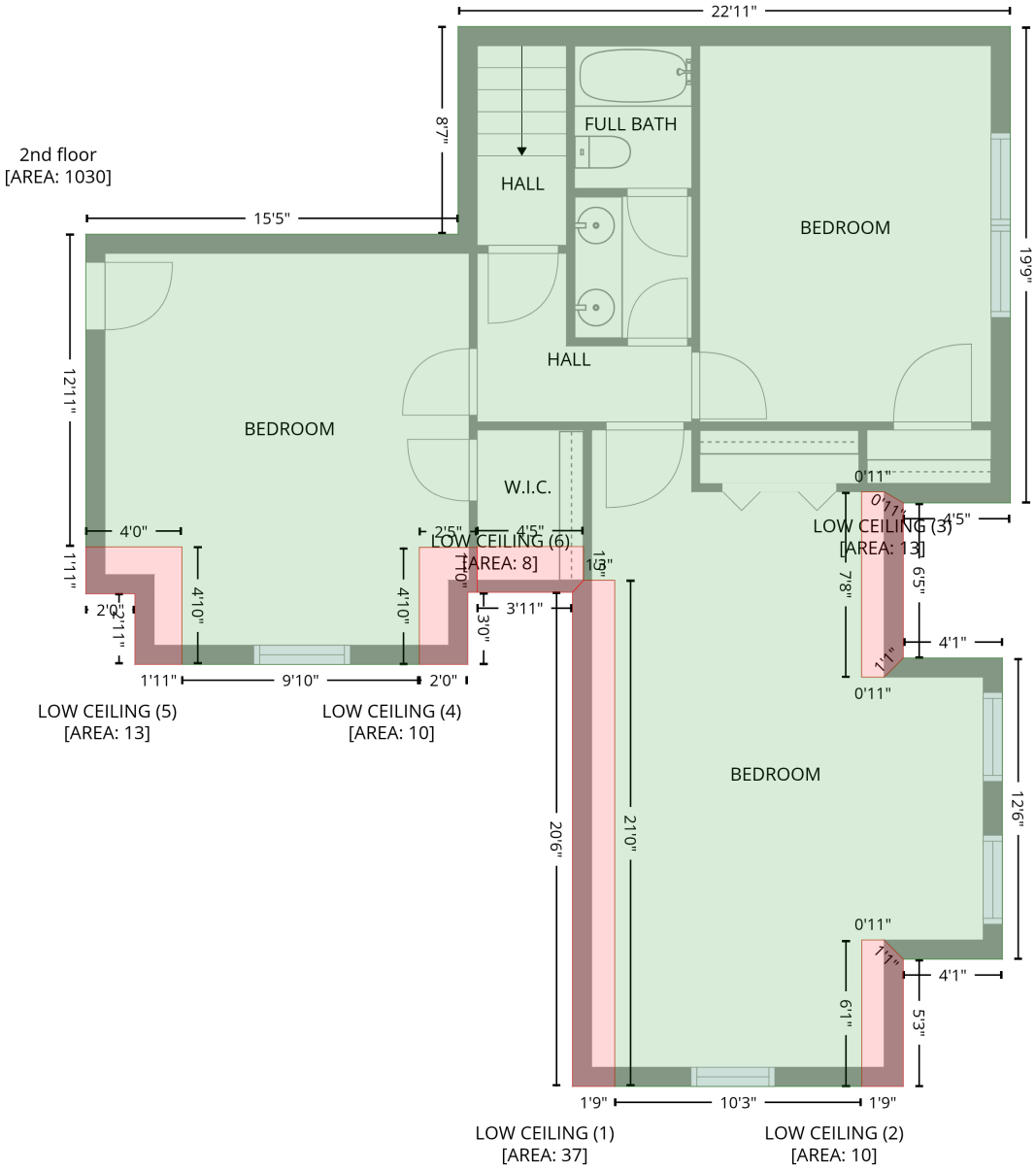
## Level 1

Space	Area (sq. ft)	Calculation <small>Coordinate Polygon Area Algorithm using inches</small>
DECK (Non-living area)	250	$-\left((421.1 + 421.1) * (-12.2 - 142.4) + (421.1 + 302.7) * (142.4 - 142.4) + (302.7 + 302.7) * (142.4 - 105.5) + (302.7 + 228.2) * (105.5 - 105.5) + (228.2 + 228.2) * (105.5 - 142.4) + (228.2 + 170.7) * (142.4 - 142.4) + (170.7 + 170.7) * (142.4 - -12.2) + (170.7 + 421.1) * (-12.2 - -12.2)\right) * 0.5 * 0.00694$
PORCH (Non-living area)	121	$-\left((176.3 + 357.4) * (563 - 563.1) + (357.4 + 357.4) * (563.1 - 650.3) + (357.4 + 138.9) * (650.3 - 650.3) + (138.9 + 138.9) * (650.3 - 604.7) + (138.9 + 176.3) * (604.7 - 604.7) + (176.3 + 176.3) * (604.7 - 563)\right) * 0.5 * 0.00694$
FIREPLACE (Non-living area)	19	$-\left((302.7 + 302.7) * (105.5 - 142.4) + (302.7 + 228.2) * (142.4 - 142.4) + (228.2 + 228.2) * (142.4 - 105.5) + (228.2 + 302.7) * (105.5 - 105.5)\right) * 0.5 * 0.00694$

# 142 Oak Brook Circle, Madison, Madison County, Alabama, United States, 35758

Gross Living Area: 2894 sq. ft

## Level 2



# 142 Oak Brook Circle, Madison, Madison County, Alabama, United States, 35758

Gross Living Area: 2894 sq. ft

## Level 2

Space	Area (sq. ft)	Calculation <small>Coordinate Polygon Area Algorithm using inches</small>
2nd floor (Living area)	1030	$-\left((626.3 + 626.3) * (280.9 - 517.7) + (626.3 + 573.1) * (517.7 - 517.7) + (573.1 + 563.6) * (517.7 - 512.2) + (563.6 + 552.4) * (512.2 - 512.2) + (552.4 + 552.4) * (512.2 - 604.4) + (552.4 + 563.6) * (604.4 - 604.4) + (563.6 + 573.1) * (604.4 - 594.8) + (573.1 + 622.4) * (594.8 - 594.8) + (622.4 + 622.4) * (594.8 - 744.6) + (622.4 + 573.1) * (744.6 - 744.6) + (573.1 + 563.6) * (744.6 - 735.1) + (563.6 + 552.5) * (735.1 - 735.1) + (552.5 + 552.5) * (735.1 - 807.9) + (552.5 + 429.7) * (807.9 - 807.9) + (429.7 + 429.7) * (807.9 - 556.2) + (429.7 + 414.2) * (556.2 - 556.2) + (414.2 + 414.2) * (556.2 - 539.4) + (414.2 + 361.3) * (539.4 - 539.4) + (361.3 + 361.3) * (539.4 - 539.9) + (361.3 + 332.5) * (539.9 - 539.9) + (332.5 + 332.5) * (539.9 - 598.1) + (332.5 + 214.5) * (598.1 - 598.1) + (214.5 + 214.5) * (598.1 - 539.6) + (214.5 + 166.7) * (539.6 - 539.6) + (166.7 + 166.7) * (539.6 - 384.1) + (166.7 + 351.8) * (384.1 - 384.1) + (351.8 + 351.8) * (384.1 - 280.9) + (351.8 + 626.3) * (280.9 - 280.9)) * 0.5 * 0.00694$
LOW CEILING (Non-living area)	37	$-\left((429.7 + 429.7) * (556.2 - 807.9) + (429.7 + 408.6) * (807.9 - 807.9) + (408.6 + 408.6) * (807.9 - 562.2) + (408.6 + 414.2) * (562.2 - 556.2) + (414.2 + 429.7) * (556.2 - 556.2)) * 0.5 * 0.00694$
LOW CEILING (Non-living area)	10	$-\left((563.6 + 573.1) * (735.1 - 744.6) + (573.1 + 573.1) * (744.6 - 807.9) + (573.1 + 552.5) * (807.9 - 807.9) + (552.5 + 552.5) * (807.9 - 735.1) + (552.5 + 563.6) * (735.1 - 735.1)) * 0.5 * 0.00694$
LOW CEILING (Non-living area)	13	$-\left((563.6 + 573.1) * (512.2 - 517.7) + (573.1 + 573.1) * (517.7 - 594.8) + (573.1 + 563.6) * (594.8 - 604.4) + (563.6 + 552.4) * (604.4 - 604.4) + (552.4 + 552.4) * (604.4 - 512.2) + (552.4 + 563.6) * (512.2 - 512.2)) * 0.5 * 0.00694$
LOW CEILING (Non-living area)	10	$-\left((361.3 + 361.3) * (539.9 - 562.2) + (361.3 + 356.6) * (562.2 - 562.2) + (356.6 + 356.6) * (562.2 - 598.1) + (356.6 + 332.5) * (598.1 - 598.1) + (332.5 + 332.5) * (598.1 - 539.9) + (332.5 + 361.3) * (539.9 - 539.9)) * 0.5 * 0.00694$
LOW CEILING (Non-living area)	13	$-\left((214.5 + 214.5) * (539.6 - 598.1) + (214.5 + 191.2) * (598.1 - 598.1) + (191.2 + 191.2) * (598.1 - 563) + (191.2 + 166.7) * (563 - 563) + (166.7 + 166.7) * (563 - 539.6) + (166.7 + 214.5) * (539.6 - 539.6)) * 0.5 * 0.00694$
LOW CEILING (Non-living area)	8	$-\left((414.2 + 414.2) * (539.4 - 556.2) + (414.2 + 408.6) * (556.2 - 562.2) + (408.6 + 361.3) * (562.2 - 562.2) + (361.3 + 361.3) * (562.2 - 539.4) + (361.3 + 414.2) * (539.4 - 539.4)) * 0.5 * 0.00694$