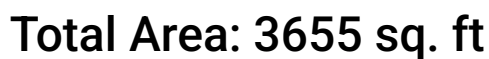


**15740 Saint Peters Church Road, Montpelier, Hanover County,  
Virginia, United States, 23192**



Excluded: Garage 617 sq. ft, Porch 446 sq. ft, Low ceiling 169 sq. ft, Walls: 311 sq. ft

## Property summary



## 2 Floors



## 4 Bedrooms



### 3 Bathrooms

Home report

**15740 Saint Peters Church Road, Montpelier, Hanover County,  
Virginia, United States, 23192**



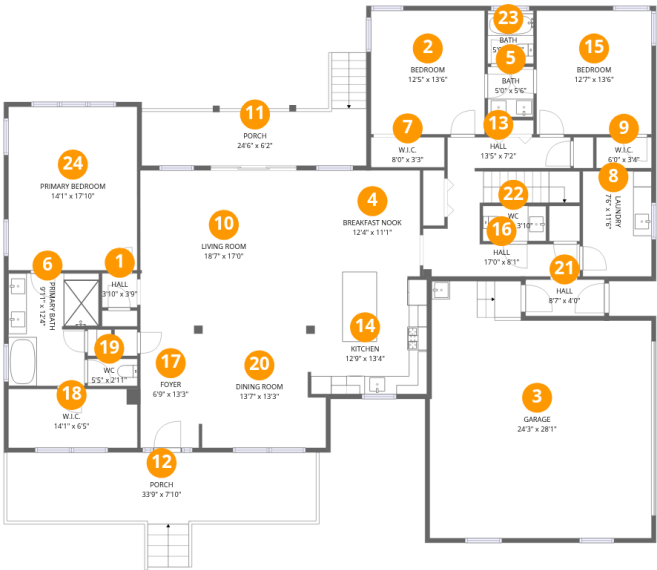
**1**  
Half baths



**1**  
Garages

Home report

15740 Saint Peters Church Road, Montpelier, Hanover County,  
Virginia, United States, 23192



Room dimensions

Floor 1

Total:2278sqft

Excluded: 1063sqft

#		Max Dimensions	sqft	Included
1	Hall	3'10" x 3'9"	14 sq. ft	Yes
2	Bedroom	12'5" x 13'6"	168 sq. ft	Yes
3	Garage	24'3" x 28'1"	617 sq. ft	No
4	Breakfast Nook	12'4" x 11'1"	136 sq. ft	Yes
5	Bath	5'0" x 5'6"	28 sq. ft	Yes
6	Primary Bath	9'11" x 12'4"	111 sq. ft	Yes
7	W.I.C.	8'0" x 3'3"	26 sq. ft	Yes
8	Laundry	7'6" x 11'6"	86 sq. ft	Yes
9	W.I.C.	6'0" x 3'4"	20 sq. ft	Yes
10	Living Room	18'7" x 17'0"	317 sq. ft	Yes
11	Porch	24'6" x 6'2"	170 sq. ft	No

## Home report

**15740 Saint Peters Church Road, Montpelier, Hanover County,  
Virginia, United States, 23192**

#		Max Dimensions	sqft	Included
12	Porch	33'9" x 7'10"	276 sq. ft	No
13	Hall	13'5" x 7'2"	96 sq. ft	Yes
14	Kitchen	12'9" x 13'4"	169 sq. ft	Yes
15	Bedroom	12'7" x 13'6"	170 sq. ft	Yes
16	Hall	17'0" x 8'1"	81 sq. ft	Yes
17	Foyer	6'9" x 13'3"	88 sq. ft	Yes
18	W.I.C.	14'1" x 6'5"	91 sq. ft	Yes
19	WC	5'5" x 2'11"	16 sq. ft	Yes
20	Dining Room	13'7" x 13'3"	166 sq. ft	Yes
21	Hall	8'7" x 4'0"	34 sq. ft	Yes
22	WC	6'11" x 3'10"	27 sq. ft	Yes
23	Bath	5'0" x 5'5"	29 sq. ft	Yes
24	Primary Bedroom	14'1" x 17'10"	252 sq. ft	Yes

Home report

15740 Saint Peters Church Road, Montpelier, Hanover County,  
Virginia, United States, 23192



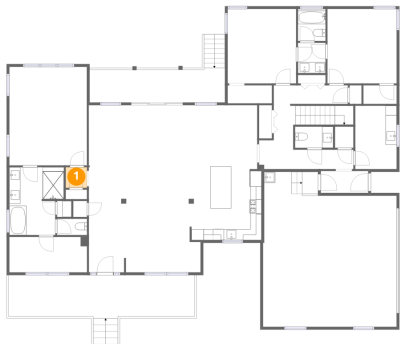
Room dimensions

Floor 2 Total:1377sqft    Excluded: 169sqft

#		Max Dimensions	sqft	Included
25	Room	19'2" x 32'1"	401 sq. ft	Yes
26	Room	23'3" x 17'3"	342 sq. ft	Yes
27	Hall	17'6" x 3'11"	68 sq. ft	Yes
28	Bath	4'11" x 8'8"	39 sq. ft	Yes
29	Room	8'11" x 12'9"	93 sq. ft	Yes
30	Room	10'6" x 14'7"	129 sq. ft	Yes
31	W.I.C.	3'9" x 10'1"	29 sq. ft	Yes
32	Bedroom	15'5" x 12'9"	167 sq. ft	Yes

15740 Saint Peters Church Road, Montpelier, Hanover County,  
Virginia, United States, 23192

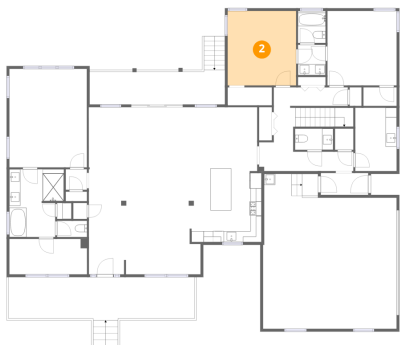
1 Floor 1 - Hall



Max Dimensions: 3'10" x 3'9"  
Calculated Area: 14 sq. ft  
Included: Yes

Heated: Yes  
Finished: Yes  
Enclosed: Yes  
Contiguous: Yes  
Permitted: Yes  
Wet space: No  
Addition: No  
Conversion: No

2 Floor 1 - Bedroom

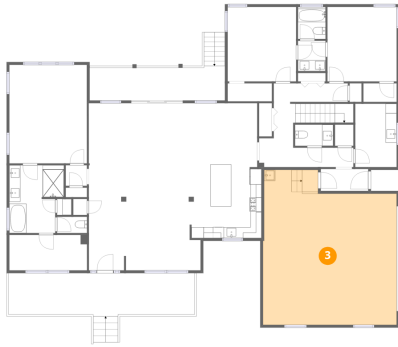


Max Dimensions: 12'5" x 13'6"  
Calculated Area: 168 sq. ft  
Included: Yes

Heated: Yes  
Finished: Yes  
Enclosed: Yes  
Contiguous: Yes  
Permitted: Yes  
Wet space: No  
Addition: No  
Conversion: No

15740 Saint Peters Church Road, Montpelier, Hanover County,  
Virginia, United States, 23192

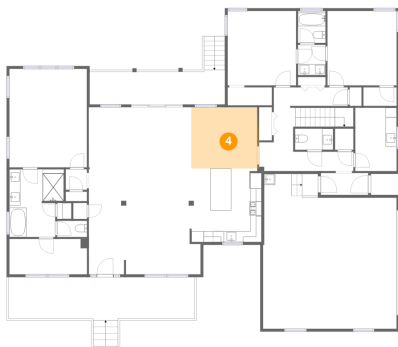
### 3 Floor 1 - Garage



Max Dimensions: 24'3" x 28'1"  
Calculated Area: 617 sq. ft  
Included: No

Heated: No  
Finished: No  
Enclosed: Yes  
Contiguous: Yes  
Permitted: Yes  
Wet space: No  
Addition: No  
Conversion: No

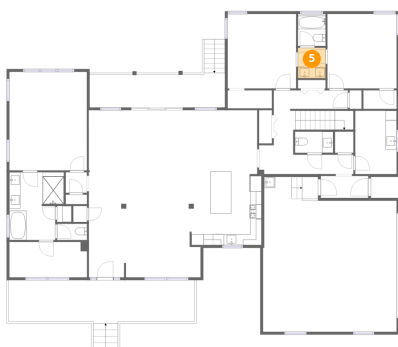
### 4 Floor 1 - Breakfast Nook



Max Dimensions: 12'4" x 11'1"  
Calculated Area: 136 sq. ft  
Included: Yes

Heated: Yes  
Finished: Yes  
Enclosed: Yes  
Contiguous: Yes  
Permitted: Yes  
Wet space: No  
Addition: No  
Conversion: No

### 5 Floor 1 - Bath

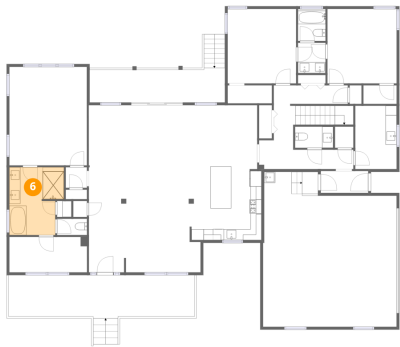


Max Dimensions: 5'0" x 5'6"  
Calculated Area: 28 sq. ft  
Included: Yes

Heated: Yes  
Finished: Yes  
Enclosed: Yes  
Contiguous: Yes  
Permitted: Yes  
Wet space: Yes  
Addition: No  
Conversion: No

15740 Saint Peters Church Road, Montpelier, Hanover County,  
Virginia, United States, 23192

6 Floor 1 - Primary Bath



Max Dimensions: 9'11" x 12'4"  
Calculated Area: 111 sq. ft  
Included: Yes

Heated: Yes  
Finished: Yes  
Enclosed: Yes  
Contiguous: Yes  
Permitted: Yes  
Wet space: Yes  
Addition: No  
Conversion: No

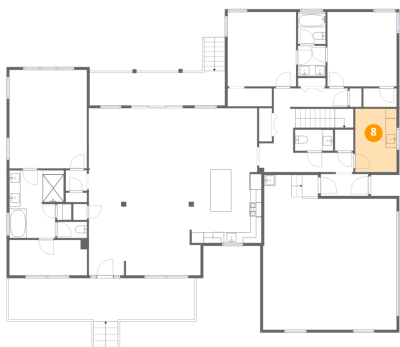
7 Floor 1 - W.I.C.



Max Dimensions: 8'0" x 3'3"  
Calculated Area: 26 sq. ft  
Included: Yes

Heated: Yes  
Finished: Yes  
Enclosed: Yes  
Contiguous: Yes  
Permitted: Yes  
Wet space: No  
Addition: No  
Conversion: No

8 Floor 1 - Laundry



Max Dimensions: 7'6" x 11'6"  
Calculated Area: 86 sq. ft  
Included: Yes

Heated: Yes  
Finished: Yes  
Enclosed: Yes  
Contiguous: Yes  
Permitted: Yes  
Wet space: No  
Addition: No  
Conversion: No



15740 Saint Peters Church Road, Montpelier, Hanover County,  
Virginia, United States, 23192

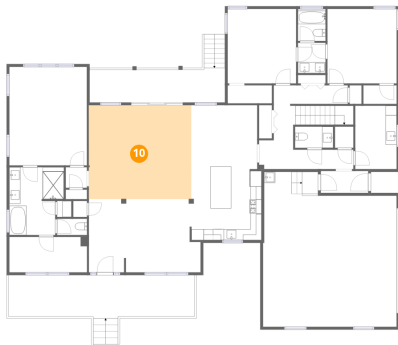
## 9 Floor 1 - W.I.C.



Max Dimensions: 6'0" x 3'4"  
Calculated Area: 20 sq. ft  
Included: Yes

Heated: Yes  
Finished: Yes  
Enclosed: Yes  
Contiguous: Yes  
Permitted: Yes  
Wet space: No  
Addition: No  
Conversion: No

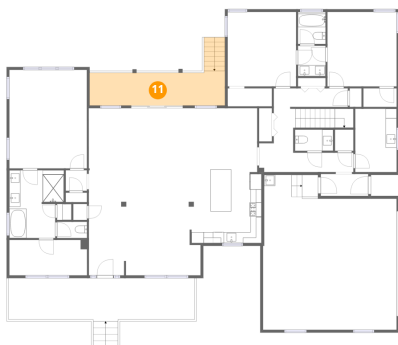
## 10 Floor 1 - Living Room



Max Dimensions: 18'7" x 17'0"  
Calculated Area: 317 sq. ft  
Included: Yes

Heated: Yes  
Finished: Yes  
Enclosed: Yes  
Contiguous: Yes  
Permitted: Yes  
Wet space: No  
Addition: No  
Conversion: No

## 11 Floor 1 - Porch

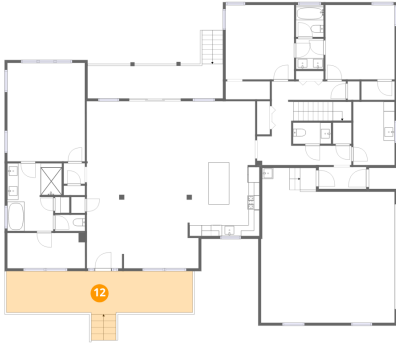


Max Dimensions: 24'6" x 6'2"  
Calculated Area: 170 sq. ft  
Included: No

Heated: No  
Finished: No  
Enclosed: No  
Contiguous: Yes  
Permitted: Yes  
Wet space: No  
Addition: No  
Conversion: No

15740 Saint Peters Church Road, Montpelier, Hanover County,  
Virginia, United States, 23192

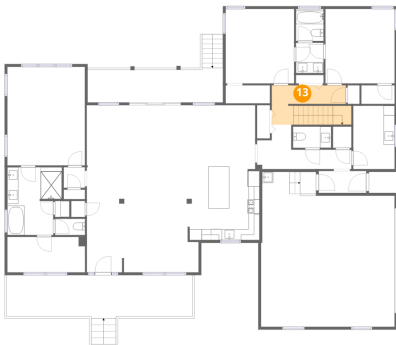
## 12 Floor 1 - Porch



Max Dimensions: 33'9" x 7'10"  
Calculated Area: 276 sq. ft  
Included: No

Heated: No  
Finished: No  
Enclosed: No  
Contiguous: Yes  
Permitted: Yes  
Wet space: No  
Addition: No  
Conversion: No

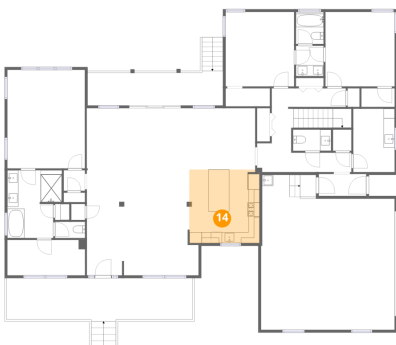
## 13 Floor 1 - Hall



Max Dimensions: 13'5" x 7'2"  
Calculated Area: 96 sq. ft  
Included: Yes

Heated: Yes  
Finished: Yes  
Enclosed: Yes  
Contiguous: Yes  
Permitted: Yes  
Wet space: No  
Addition: No  
Conversion: No

## 14 Floor 1 - Kitchen

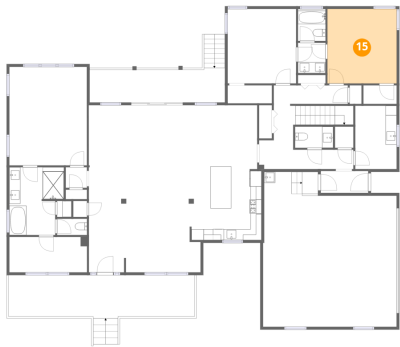


Max Dimensions: 12'9" x 13'4"  
Calculated Area: 169 sq. ft  
Included: Yes

Heated: Yes  
Finished: Yes  
Enclosed: Yes  
Contiguous: Yes  
Permitted: Yes  
Wet space: No  
Addition: No  
Conversion: No

15740 Saint Peters Church Road, Montpelier, Hanover County,  
Virginia, United States, 23192

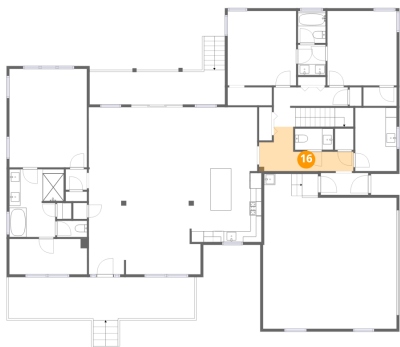
15 Floor 1 - Bedroom



Max Dimensions: 12'7" x 13'6"  
Calculated Area: 170 sq. ft  
Included: Yes

Heated: Yes  
Finished: Yes  
Enclosed: Yes  
Contiguous: Yes  
Permitted: Yes  
Wet space: No  
Addition: No  
Conversion: No

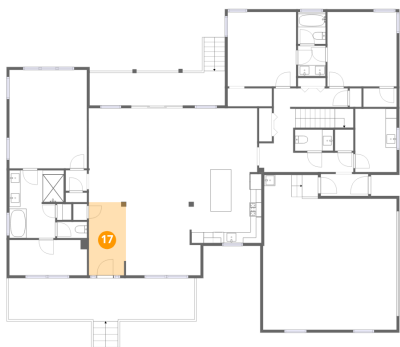
16 Floor 1 - Hall



Max Dimensions: 17'0" x 8'1"  
Calculated Area: 81 sq. ft  
Included: Yes

Heated: Yes  
Finished: Yes  
Enclosed: Yes  
Contiguous: Yes  
Permitted: Yes  
Wet space: No  
Addition: No  
Conversion: No

17 Floor 1 - Foyer

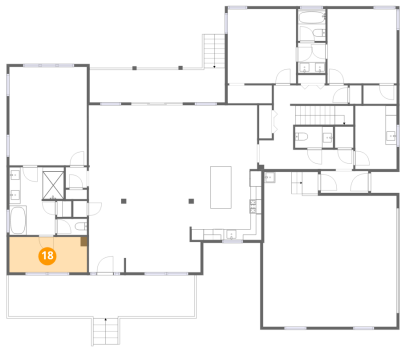


Max Dimensions: 6'9" x 13'3"  
Calculated Area: 88 sq. ft  
Included: Yes

Heated: Yes  
Finished: Yes  
Enclosed: Yes  
Contiguous: Yes  
Permitted: Yes  
Wet space: No  
Addition: No  
Conversion: No

15740 Saint Peters Church Road, Montpelier, Hanover County,  
Virginia, United States, 23192

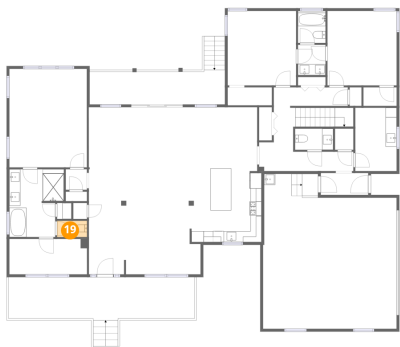
18 Floor 1 - W.I.C.



Max Dimensions: 14'1" x 6'5"  
Calculated Area: 91 sq. ft  
Included: Yes

Heated: Yes  
Finished: Yes  
Enclosed: Yes  
Contiguous: Yes  
Permitted: Yes  
Wet space: No  
Addition: No  
Conversion: No

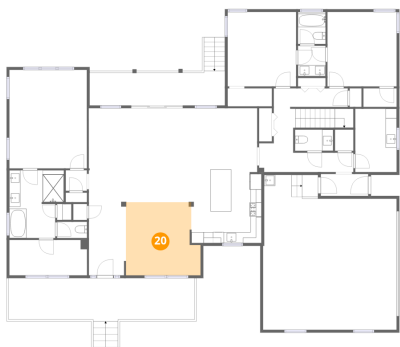
19 Floor 1 - WC



Max Dimensions: 5'5" x 2'11"  
Calculated Area: 16 sq. ft  
Included: Yes

Heated: Yes  
Finished: Yes  
Enclosed: Yes  
Contiguous: Yes  
Permitted: Yes  
Wet space: Yes  
Addition: No  
Conversion: No

20 Floor 1 - Dining Room

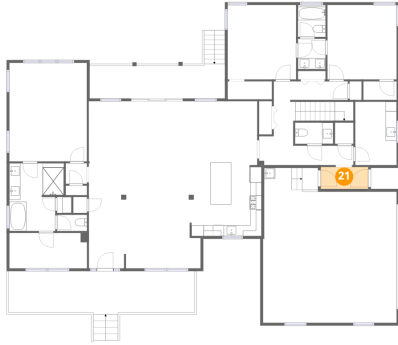


Max Dimensions: 13'7" x 13'3"  
Calculated Area: 166 sq. ft  
Included: Yes

Heated: Yes  
Finished: Yes  
Enclosed: Yes  
Contiguous: Yes  
Permitted: Yes  
Wet space: No  
Addition: No  
Conversion: No

15740 Saint Peters Church Road, Montpelier, Hanover County,  
Virginia, United States, 23192

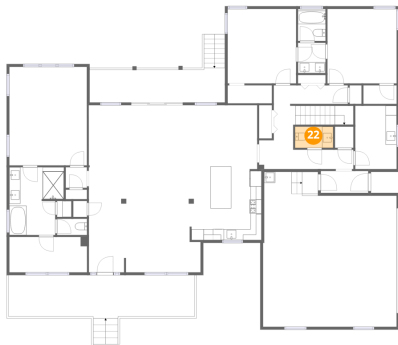
## 21 Floor 1 - Hall



Max Dimensions: 8'7" x 4'0"  
Calculated Area: 34 sq. ft  
Included: Yes

Heated: Yes  
Finished: Yes  
Enclosed: Yes  
Contiguous: Yes  
Permitted: Yes  
Wet space: No  
Addition: No  
Conversion: No

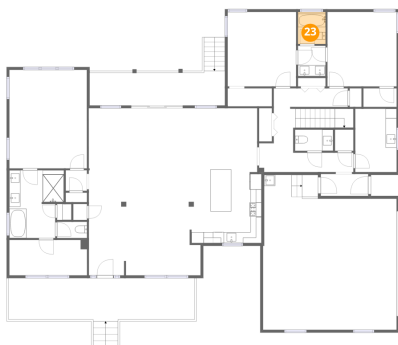
## 22 Floor 1 - WC



Max Dimensions: 6'11" x 3'10"  
Calculated Area: 27 sq. ft  
Included: Yes

Heated: Yes  
Finished: Yes  
Enclosed: Yes  
Contiguous: Yes  
Permitted: Yes  
Wet space: Yes  
Addition: No  
Conversion: No

## 23 Floor 1 - Bath

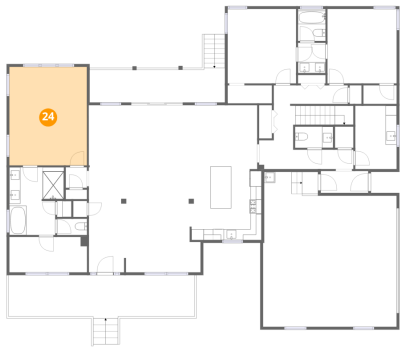


Max Dimensions: 5'0" x 5'5"  
Calculated Area: 29 sq. ft  
Included: Yes

Heated: Yes  
Finished: Yes  
Enclosed: Yes  
Contiguous: Yes  
Permitted: Yes  
Wet space: Yes  
Addition: No  
Conversion: No

15740 Saint Peters Church Road, Montpelier, Hanover County,  
Virginia, United States, 23192

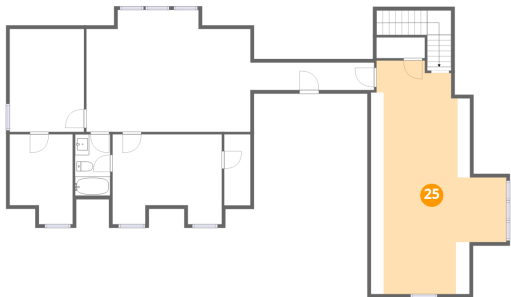
24 Floor 1 - Primary Bedroom



Max Dimensions: 14'1" x 17'10"  
Calculated Area: 252 sq. ft  
Included: Yes

Heated: Yes  
Finished: Yes  
Enclosed: Yes  
Contiguous: Yes  
Permitted: Yes  
Wet space: No  
Addition: No  
Conversion: No

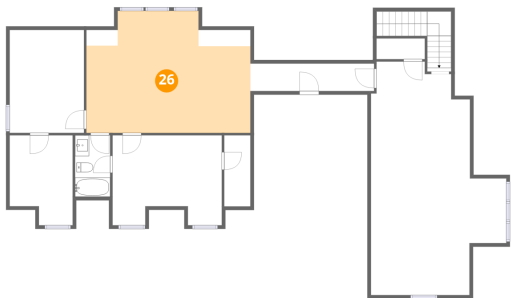
25 Floor 2 - Room



Max Dimensions: 19'2" x 32'1"  
Calculated Area: 401 sq. ft  
Included: Yes

Heated: Yes  
Finished: Yes  
Enclosed: Yes  
Contiguous: Yes  
Permitted: Yes  
Wet space: No  
Addition: No  
Conversion: No

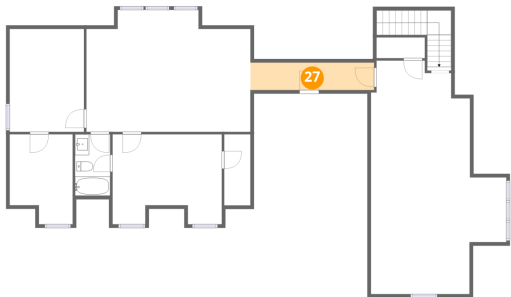
26 Floor 2 - Room



Max Dimensions: 23'3" x 17'3"  
Calculated Area: 342 sq. ft  
Included: Yes

Heated: Yes  
Finished: Yes  
Enclosed: Yes  
Contiguous: Yes  
Permitted: Yes  
Wet space: No  
Addition: No  
Conversion: No

27 Floor 2 - Hall



Max Dimensions: 17'6" x 3'11"  
Calculated Area: 68 sq. ft  
Included: Yes

Heated: Yes  
Finished: Yes  
Enclosed: Yes  
Contiguous: Yes  
Permitted: Yes  
Wet space: No  
Addition: No  
Conversion: No

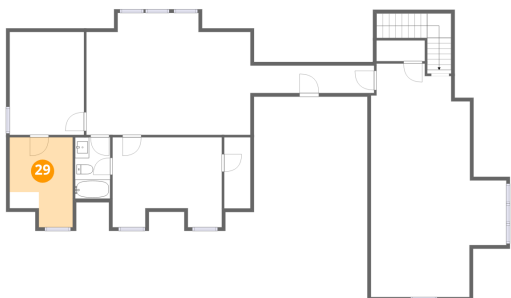
28 Floor 2 - Bath



Max Dimensions: 4'11" x 8'8"  
Calculated Area: 39 sq. ft  
Included: Yes

Heated: Yes  
Finished: Yes  
Enclosed: Yes  
Contiguous: Yes  
Permitted: Yes  
Wet space: Yes  
Addition: No  
Conversion: No

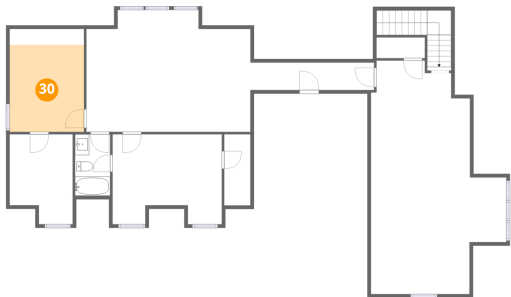
29 Floor 2 - Room



Max Dimensions: 8'11" x 12'9"  
Calculated Area: 93 sq. ft  
Included: Yes

Heated: Yes  
Finished: Yes  
Enclosed: Yes  
Contiguous: Yes  
Permitted: Yes  
Wet space: No  
Addition: No  
Conversion: No

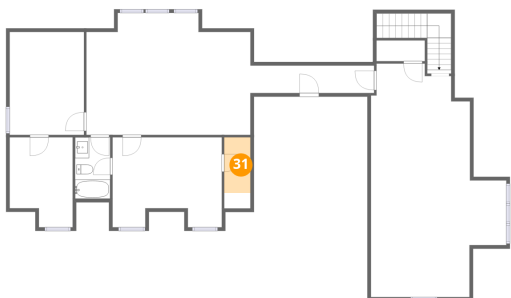
30 Floor 2 - Room



Max Dimensions: 10'6" x 14'7"  
Calculated Area: 129 sq. ft  
Included: Yes

Heated: Yes  
Finished: Yes  
Enclosed: Yes  
Contiguous: Yes  
Permitted: Yes  
Wet space: No  
Addition: No  
Conversion: No

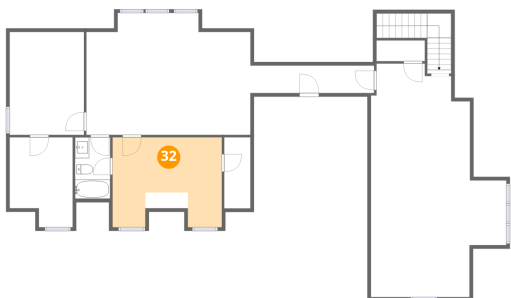
31 Floor 2 - W.I.C.



Max Dimensions: 3'9" x 10'1"  
Calculated Area: 29 sq. ft  
Included: Yes

Heated: Yes  
Finished: Yes  
Enclosed: Yes  
Contiguous: Yes  
Permitted: Yes  
Wet space: No  
Addition: No  
Conversion: No

32 Floor 2 - Bedroom



Max Dimensions: 15'5" x 12'9"  
Calculated Area: 167 sq. ft  
Included: Yes

Heated: Yes  
Finished: Yes  
Enclosed: Yes  
Contiguous: Yes  
Permitted: Yes  
Wet space: No  
Addition: No  
Conversion: No