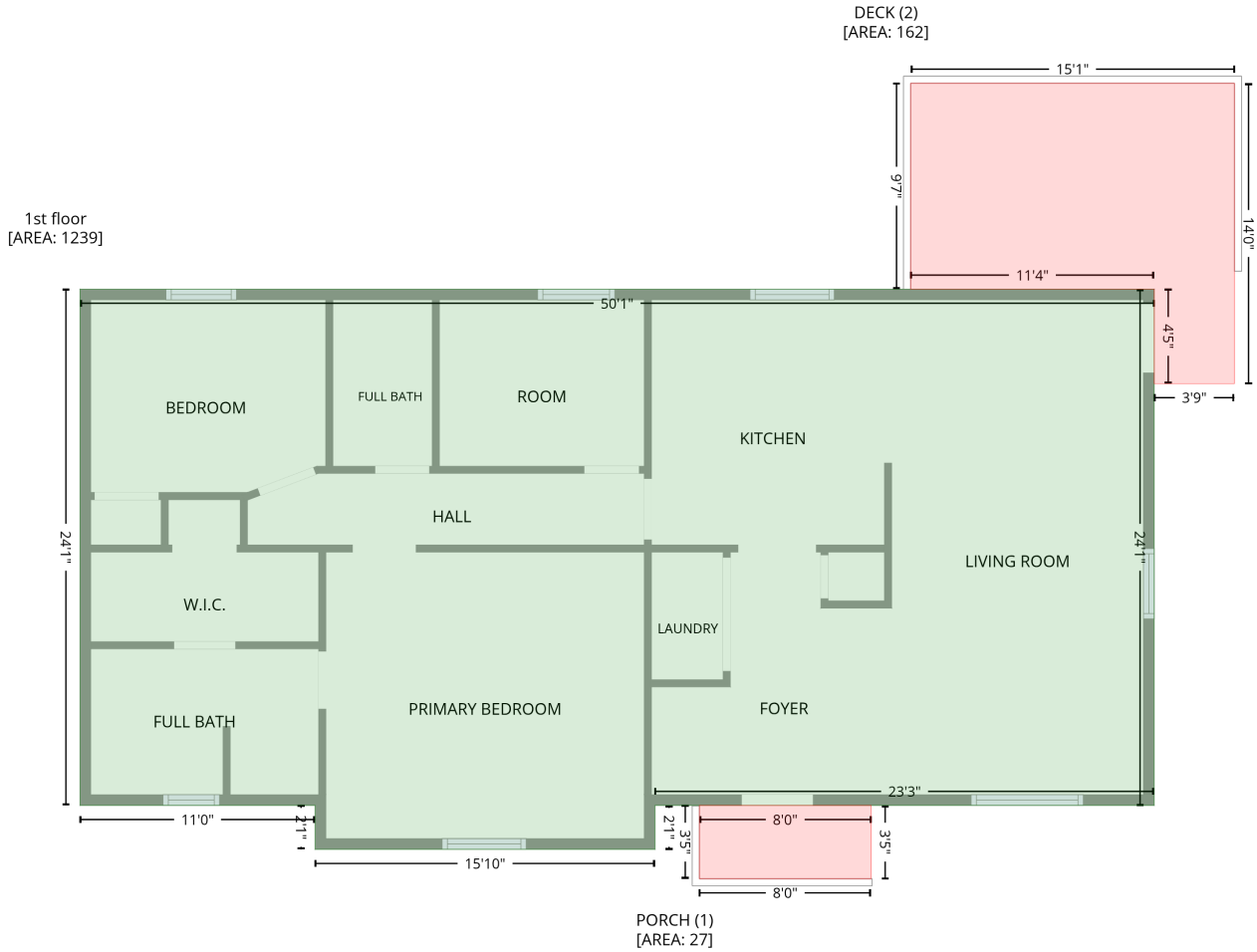


4004 75,Stem,NC,US

Gross Living Area: 1239 sq. ft

Level 1



Space	Area (sq. ft)	Calculation <small>Coordinate Polygon Area Algorithm using inches</small>
1st floor (Living area)	1239	$-((504.2 + 504.2) * (321.2 - 610.2) + (504.2 + 224.8) * (610.2 - 610.2) + (224.8 + 224.8) * (610.2 - 634.8) + (224.8 + 34.6) * (634.8 - 634.8) + (34.6 + 34.6) * (634.8 - 610.2) + (34.6 + -97) * (610.2 - 610.2) + (-97 + -97) * (610.2 - 321.2) + (-97 + 504.2) * (321.2 - 321.2)) * 0.5 + 0.00694$
PORCH (Non-living area)	27	$-((345.8 + 345.8) * (610.2 - 651.2) + (345.8 + 249.7) * (651.2 - 651.2) + (249.7 + 249.7) * (651.2 - 610.2) + (249.7 + 345.8) * (610.2 - 610.2)) * 0.5 + 0.00694$
DECK (Non-living area)	162	$-((549.2 + 549.2) * (206 - 374.1) + (549.2 + 504.2) * (374.1 - 374.1) + (504.2 + 504.2) * (374.1 - 321.2) + (504.2 + 367.9) * (321.2 - 321.2) + (367.9 + 367.9) * (321.2 - 206) + (367.9 + 549.2) * (206 - 206)) * 0.5 + 0.00694$