

# Home data report

## 23822 Seminole Trail, Novi, MI, US



### Total Area: 2144 sq. ft

Basement: 0 sq. ft, 1st Floor: 1354 sq. ft, 2nd Floor: 790 sq. ft

Excluded: Basement 1349 sq. ft, Garage 356 sq. ft, Deck 107 sq. ft, Open to below 330 sq. ft, Walls: 281 sq. ft

### Property summary


 **3** Floors

 **3** Bedrooms

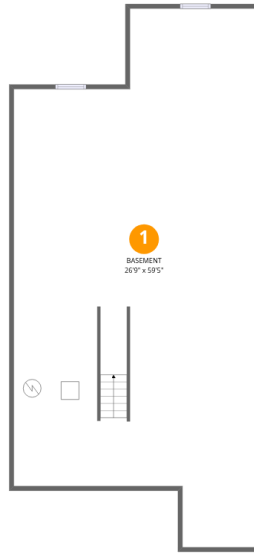
 **2** Bathrooms

Home data report

# 23822 Seminole Trail, Novi, MI, US

 **1**  
Half baths

 **1**  
Garages



## Room dimensions

Floor 1 Below grade

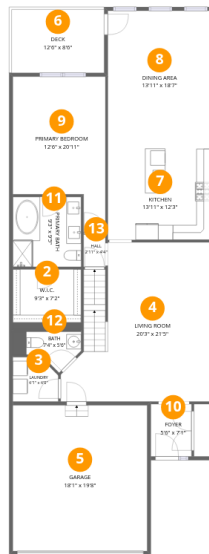
Total: 0sqft

Excluded: 1349sqft

| # |          | Dimensions    | sqft        | Counted as living area |
|---|----------|---------------|-------------|------------------------|
| 1 | Basement | 26'9" x 59'5" | 1349 sq. ft | No                     |

Home data report

23822 Seminole Trail, Novi, MI, US



Room dimensions

Floor 2

Total:1354sqft

Excluded: 463sqft

| #  |                 | Dimensions     | sqft       | Counted as living area |
|----|-----------------|----------------|------------|------------------------|
| 2  | W.I.C.          | 9'3" x 7'2"    | 74 sq. ft  | Yes                    |
| 3  | Laundry         | 6'1" x 6'0"    | 34 sq. ft  | Yes                    |
| 4  | Living Room     | 20'3" x 21'5"  | 371 sq. ft | Yes                    |
| 5  | Garage          | 18'1" x 19'8"  | 356 sq. ft | No                     |
| 6  | Deck            | 12'6" x 8'6"   | 107 sq. ft | No                     |
| 7  | Kitchen         | 13'11" x 12'3" | 171 sq. ft | Yes                    |
| 8  | Dining Area     | 13'11" x 18'7" | 259 sq. ft | Yes                    |
| 9  | Primary Bedroom | 12'6" x 20'11" | 213 sq. ft | Yes                    |
| 10 | Foyer           | 5'6" x 7'1"    | 39 sq. ft  | Yes                    |
| 11 | Primary Bath    | 9'3" x 9'5"    | 87 sq. ft  | Yes                    |
| 12 | Bath            | 7'4" x 5'6"    | 34 sq. ft  | Yes                    |

Home data report

**23822 Seminole Trail,Novi,MI,US**

| #  |      | Dimensions   | sqft      | Counted as living area |
|----|------|--------------|-----------|------------------------|
| 13 | Hall | 2'11" x 4'4" | 13 sq. ft | Yes                    |



## Room dimensions

Floor 3

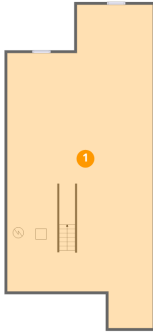
Total: 790sqft

Excluded: 330sqft

| #  |               | Dimensions     | sqft       | Counted as living area |
|----|---------------|----------------|------------|------------------------|
| 14 | Bath          | 5'6" x 8'4"    | 46 sq. ft  | Yes                    |
| 15 | Bonus Room    | 20'10" x 10'8" | 182 sq. ft | Yes                    |
| 16 | Open To Below | 17'2" x 21'5"  | 330 sq. ft | No                     |
| 17 | Bedroom       | 12'6" x 17'9"  | 198 sq. ft | Yes                    |
| 18 | Hall          | 6'7" x 15'0"   | 103 sq. ft | Yes                    |
| 19 | Bedroom       | 13'6" x 15'9"  | 156 sq. ft | Yes                    |
| 20 | W.I.C.        | 5'6" x 5'3"    | 38 sq. ft  | Yes                    |
| 21 | W.I.C.        | 9'0" x 5'8"    | 43 sq. ft  | Yes                    |

## 1 Floor 1 - Basement

---



Dimensions: 26'9" x 59'5"  
Area: 1349 sq. ft  
Counted as living area: No

Heated: Yes  
Finished: No  
Enclosed: Yes  
Contiguous: Yes  
Permitted: Yes  
Wet space: No  
Addition: No  
Conversion: No

## 2 Floor 2 - W.I.C.

---



Dimensions: 9'3" x 7'2"  
Area: 74 sq. ft  
Counted as living area: Yes

Heated: Yes  
Finished: Yes  
Enclosed: Yes  
Contiguous: Yes  
Permitted: Yes  
Wet space: No  
Addition: No  
Conversion: No

### 3 Floor 2 - Laundry



Dimensions: 6'1" x 6'0"  
Area: 34 sq. ft  
Counted as living area: Yes

Heated: Yes  
Finished: Yes  
Enclosed: Yes  
Contiguous: Yes  
Permitted: Yes  
Wet space: No  
Addition: No  
Conversion: No

### 4 Floor 2 - Living Room



Dimensions: 20'3" x 21'5"  
Area: 371 sq. ft  
Counted as living area: Yes

Heated: Yes  
Finished: Yes  
Enclosed: Yes  
Contiguous: Yes  
Permitted: Yes  
Wet space: No  
Addition: No  
Conversion: No

### 5 Floor 2 - Garage



Dimensions: 18'1" x 19'8"  
Area: 356 sq. ft  
Counted as living area: No

Heated: No  
Finished: No  
Enclosed: Yes  
Contiguous: Yes  
Permitted: Yes  
Wet space: No  
Addition: No  
Conversion: No

## 6 Floor 2 - Deck



Dimensions: 12'6" x 8'6"  
Area: 107 sq. ft  
Counted as living area: No

Heated: No  
Finished: No  
Enclosed: No  
Contiguous: Yes  
Permitted: Yes  
Wet space: No  
Addition: No  
Conversion: No

## 7 Floor 2 - Kitchen



Dimensions: 13'11" x 12'3"  
Area: 171 sq. ft  
Counted as living area: Yes

Heated: Yes  
Finished: Yes  
Enclosed: Yes  
Contiguous: Yes  
Permitted: Yes  
Wet space: No  
Addition: No  
Conversion: No

## 8 Floor 2 - Dining Area



Dimensions: 13'11" x 18'7"  
Area: 259 sq. ft  
Counted as living area: Yes

Heated: Yes  
Finished: Yes  
Enclosed: Yes  
Contiguous: Yes  
Permitted: Yes  
Wet space: No  
Addition: No  
Conversion: No

## 9 Floor 2 - Primary Bedroom



Dimensions: 12'6" x 20'11"  
Area: 213 sq. ft  
Counted as living area: Yes

Heated: Yes  
Finished: Yes  
Enclosed: Yes  
Contiguous: Yes  
Permitted: Yes  
Wet space: No  
Addition: No  
Conversion: No

## 10 Floor 2 - Foyer



Dimensions: 5'6" x 7'1"  
Area: 39 sq. ft  
Counted as living area: Yes

Heated: Yes  
Finished: Yes  
Enclosed: Yes  
Contiguous: Yes  
Permitted: Yes  
Wet space: No  
Addition: No  
Conversion: No

## 11 Floor 2 - Primary Bath



Dimensions: 9'3" x 9'5"  
Area: 87 sq. ft  
Counted as living area: Yes

Heated: Yes  
Finished: Yes  
Enclosed: Yes  
Contiguous: Yes  
Permitted: Yes  
Wet space: Yes  
Addition: No  
Conversion: No

**12** Floor 2 - Bath



Dimensions: 7'4" x 5'6"  
Area: 34 sq. ft  
Counted as living area: Yes

Heated: Yes  
Finished: Yes  
Enclosed: Yes  
Contiguous: Yes  
Permitted: Yes  
Wet space: No  
Addition: No  
Conversion: No

**13** Floor 2 - Hall



Dimensions: 2'11" x 4'4"  
Area: 13 sq. ft  
Counted as living area: Yes

Heated: Yes  
Finished: Yes  
Enclosed: Yes  
Contiguous: Yes  
Permitted: Yes  
Wet space: No  
Addition: No  
Conversion: No

**14** Floor 3 - Bath

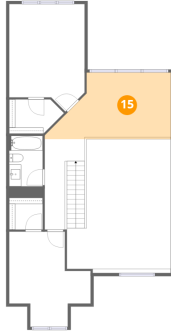


Dimensions: 5'6" x 8'4"  
Area: 46 sq. ft  
Counted as living area: Yes

Heated: Yes  
Finished: Yes  
Enclosed: Yes  
Contiguous: Yes  
Permitted: Yes  
Wet space: Yes  
Addition: No  
Conversion: No

**15** Floor 3 - Bonus Room

---

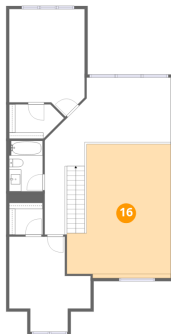


Dimensions: 20'10" x 10'8"  
Area: 182 sq. ft  
Counted as living area: Yes

Heated: Yes  
Finished: Yes  
Enclosed: Yes  
Contiguous: Yes  
Permitted: Yes  
Wet space: No  
Addition: No  
Conversion: No

**16** Floor 3 - Open To Below

---

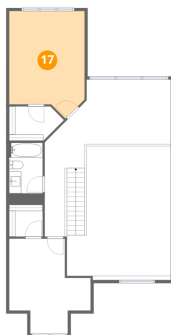


Dimensions: 17'2" x 21'5"  
Area: 330 sq. ft  
Counted as living area: No

Heated: No  
Finished: No  
Enclosed: No  
Contiguous: Yes  
Permitted: No  
Wet space: No  
Addition: No  
Conversion: No

**17** Floor 3 - Bedroom

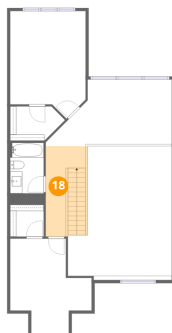
---



Dimensions: 12'6" x 17'9"  
Area: 198 sq. ft  
Counted as living area: Yes

Heated: Yes  
Finished: Yes  
Enclosed: Yes  
Contiguous: Yes  
Permitted: Yes  
Wet space: No  
Addition: No  
Conversion: No

**18** Floor 3 - Hall



Dimensions: 6'7" x 15'0"  
Area: 103 sq. ft  
Counted as living area: Yes

Heated: Yes  
Finished: Yes  
Enclosed: Yes  
Contiguous: Yes  
Permitted: Yes  
Wet space: No  
Addition: No  
Conversion: No

**19** Floor 3 - Bedroom



Dimensions: 13'6" x 15'9"  
Area: 156 sq. ft  
Counted as living area: Yes

Heated: Yes  
Finished: Yes  
Enclosed: Yes  
Contiguous: Yes  
Permitted: Yes  
Wet space: No  
Addition: No  
Conversion: No

**20** Floor 3 - W.I.C.



Dimensions: 5'6" x 5'3"  
Area: 38 sq. ft  
Counted as living area: Yes

Heated: Yes  
Finished: Yes  
Enclosed: Yes  
Contiguous: Yes  
Permitted: Yes  
Wet space: No  
Addition: No  
Conversion: No

**21** Floor 3 - W.I.C.

---



Dimensions: 9'0" x 5'8"  
Area: 43 sq. ft  
Counted as living area: Yes

Heated: Yes  
Finished: Yes  
Enclosed: Yes  
Contiguous: Yes  
Permitted: Yes  
Wet space: No  
Addition: No  
Conversion: No