

Home data report

105 Purdons Bay Road, McDonald's Corners, Lanark County,
Ontario, Canada, K0G 1M0




Total Area: 2258 sq. ft

Basement: 318 sq. ft, 1st Floor: 1249 sq. ft, 2nd Floor: 691 sq. ft

Excluded: Basement 254 sq. ft, Storage 31 sq. ft, Walls: 220 sq. ft

Property summary

 **3**
Floors

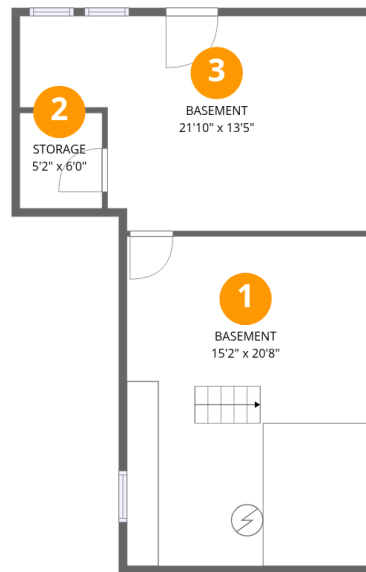
 **2**
Bedrooms

 **1**
Bathrooms

 **1**
Half baths

Home data report

105 Purdons Bay Road, McDonald's Corners, Lanark County,
Ontario, Canada, K0G 1M0



Room dimensions

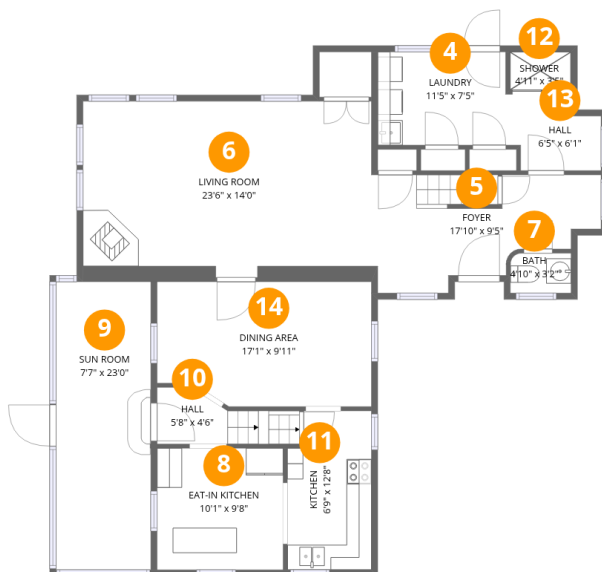
Floor 1 Below grade

Total:318sqft

Excluded: 285sqft

#		Dimensions	sqft	Counted as living area
1	Basement	15'2" x 20'8"	313 sq. ft	Yes
2	Storage	5'2" x 6'0"	31 sq. ft	No
3	Basement	21'10" x 13'5"	250 sq. ft	No

105 Purdons Bay Road, McDonald's Corners, Lanark County, Ontario, Canada, K0G 1M0



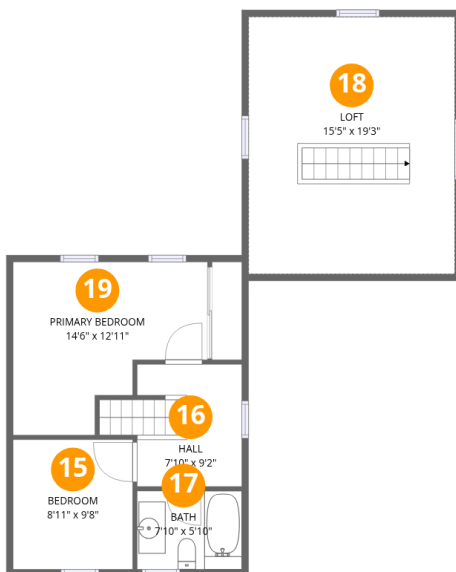
Room dimensions

Floor 2

Total:1249sqft Excluded: 0sqft

#		Dimensions	sqft	Counted as living area
4	Laundry	11'5" x 7'5"	81 sq. ft	Yes
5	Foyer	17'10" x 9'5"	129 sq. ft	Yes
6	Living Room	23'6" x 14'0"	310 sq. ft	Yes
7	Bath	4'10" x 3'2"	15 sq. ft	Yes
8	Eat-in Kitchen	10'1" x 9'8"	98 sq. ft	Yes
9	Sun Room	7'7" x 23'0"	174 sq. ft	Yes
10	Hall	5'8" x 4'6"	38 sq. ft	Yes
11	Kitchen	6'9" x 12'8"	81 sq. ft	Yes
12	Shower	4'11" x 3'5"	16 sq. ft	Yes
13	Hall	6'5" x 6'1"	35 sq. ft	Yes
14	Dining Area	17'1" x 9'11"	163 sq. ft	Yes

105 Purdons Bay Road, McDonald's Corners, Lanark County, Ontario, Canada, K0G 1M0



Room dimensions

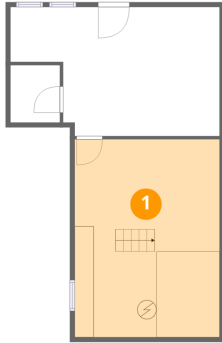
Floor 3

Total:691sqft Excluded: 0sqft

#		Dimensions	sqft	Counted as living area
15	Bedroom	8'11" x 9'8"	87 sq. ft	Yes
16	Hall	7'10" x 9'2"	78 sq. ft	Yes
17	Bath	7'10" x 5'10"	46 sq. ft	Yes
18	Loft	15'5" x 19'3"	297 sq. ft	Yes
19	Primary Bedroom	14'6" x 12'11"	148 sq. ft	Yes

105 Purdons Bay Road, McDonald's Corners, Lanark County,
Ontario, Canada, K0G 1M0

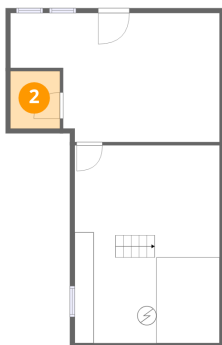
1 Floor 1 - Basement



Dimensions: 15'2" x 20'8"
Area: 313 sq. ft
Counted as living area: No

Heated: Yes
Finished: Yes
Enclosed: Yes
Contiguous: No
Permitted: Yes
Wet space: No
Addition: No
Conversion: No

2 Floor 1 - Storage

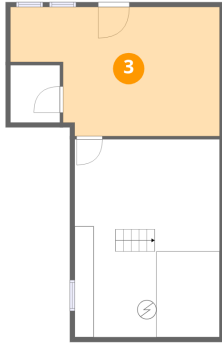


Dimensions: 5'2" x 6'0"
Area: 31 sq. ft
Counted as living area: No

Heated: No
Finished: No
Enclosed: No
Contiguous: Yes
Permitted: Yes
Wet space: No
Addition: No
Conversion: No

105 Purdons Bay Road, McDonald's Corners, Lanark County,
Ontario, Canada, K0G 1M0

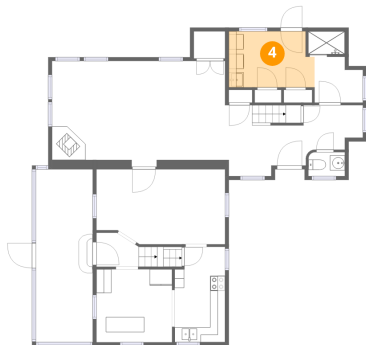
3 Floor 1 - Basement



Dimensions: 21'10" x 13'5"
Area: 250 sq. ft
Counted as living area: No

Heated: Yes
Finished: No
Enclosed: Yes
Contiguous: Yes
Permitted: Yes
Wet space: No
Addition: No
Conversion: No

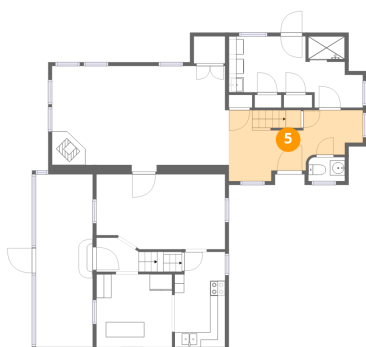
4 Floor 2 - Laundry



Dimensions: 11'5" x 7'5"
Area: 81 sq. ft
Counted as living area: Yes

Heated: Yes
Finished: Yes
Enclosed: Yes
Contiguous: Yes
Permitted: Yes
Wet space: No
Addition: No
Conversion: No

5 Floor 2 - Foyer

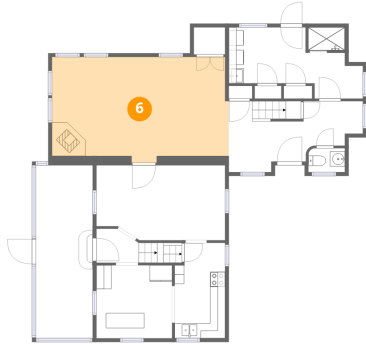


Dimensions: 17'10" x 9'5"
Area: 129 sq. ft
Counted as living area: Yes

Heated: Yes
Finished: Yes
Enclosed: Yes
Contiguous: Yes
Permitted: Yes
Wet space: No
Addition: No
Conversion: No

105 Purdons Bay Road, McDonald's Corners, Lanark County,
Ontario, Canada, K0G 1M0

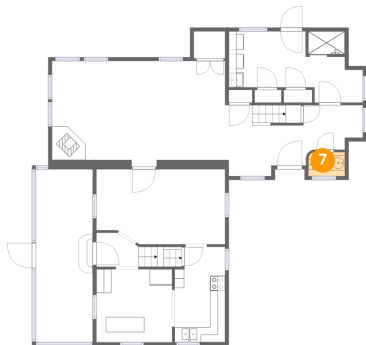
6 Floor 2 - Living Room



Dimensions: 23'6" x 14'0"
Area: 310 sq. ft
Counted as living area: Yes

Heated: Yes
Finished: Yes
Enclosed: Yes
Contiguous: Yes
Permitted: Yes
Wet space: No
Addition: No
Conversion: No

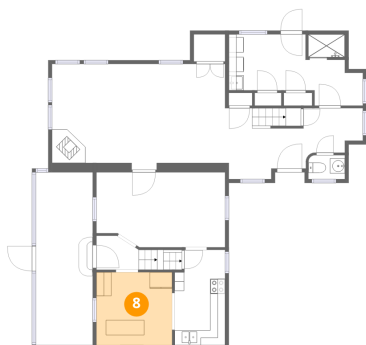
7 Floor 2 - Bath



Dimensions: 4'10" x 3'2"
Area: 15 sq. ft
Counted as living area: Yes

Heated: Yes
Finished: Yes
Enclosed: Yes
Contiguous: Yes
Permitted: Yes
Wet space: Yes
Addition: No
Conversion: No

8 Floor 2 - Eat-in Kitchen

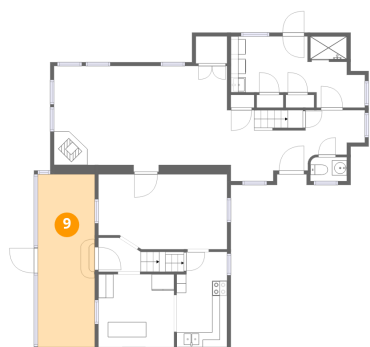


Dimensions: 10'1" x 9'8"
Area: 98 sq. ft
Counted as living area: Yes

Heated: Yes
Finished: Yes
Enclosed: Yes
Contiguous: Yes
Permitted: Yes
Wet space: No
Addition: No
Conversion: No

105 Purdons Bay Road, McDonald's Corners, Lanark County,
Ontario, Canada, K0G 1M0

9 Floor 2 - Sun Room



Dimensions: 7'7" x 23'0"
Area: 174 sq. ft
Counted as living area: Yes

Heated: Yes
Finished: Yes
Enclosed: Yes
Contiguous: Yes
Permitted: Yes
Wet space: No
Addition: No
Conversion: No

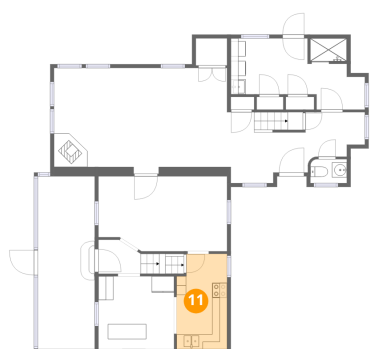
10 Floor 2 - Hall



Dimensions: 5'8" x 4'6"
Area: 38 sq. ft
Counted as living area: Yes

Heated: Yes
Finished: Yes
Enclosed: Yes
Contiguous: Yes
Permitted: Yes
Wet space: No
Addition: No
Conversion: No

11 Floor 2 - Kitchen

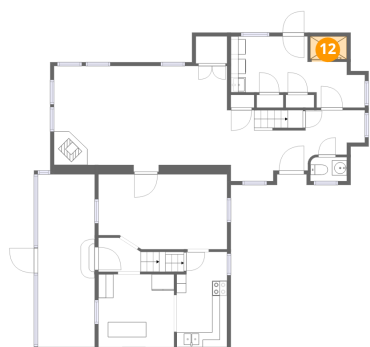


Dimensions: 6'9" x 12'8"
Area: 81 sq. ft
Counted as living area: Yes

Heated: Yes
Finished: Yes
Enclosed: Yes
Contiguous: Yes
Permitted: Yes
Wet space: No
Addition: No
Conversion: No

105 Purdons Bay Road, McDonald's Corners, Lanark County,
Ontario, Canada, K0G 1M0

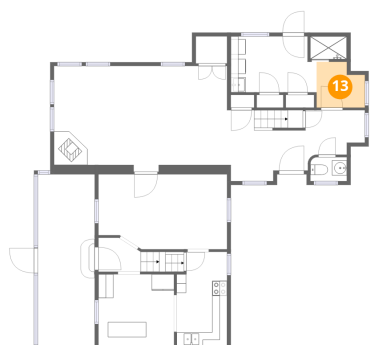
12 Floor 2 - Shower



Dimensions: 4'11" x 3'5"
Area: 16 sq. ft
Counted as living area: Yes

Heated: Yes
Finished: Yes
Enclosed: Yes
Contiguous: Yes
Permitted: Yes
Wet space: Yes
Addition: No
Conversion: No

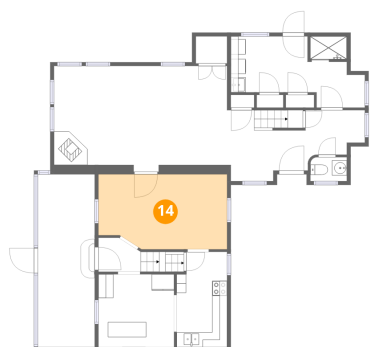
13 Floor 2 - Hall



Dimensions: 6'5" x 6'1"
Area: 35 sq. ft
Counted as living area: Yes

Heated: Yes
Finished: Yes
Enclosed: Yes
Contiguous: Yes
Permitted: Yes
Wet space: No
Addition: No
Conversion: No

14 Floor 2 - Dining Area

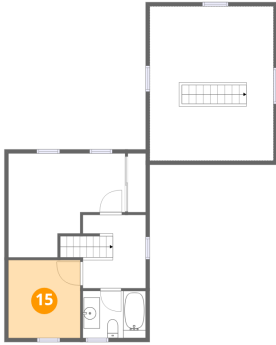


Dimensions: 17'1" x 9'11"
Area: 163 sq. ft
Counted as living area: Yes

Heated: Yes
Finished: Yes
Enclosed: Yes
Contiguous: Yes
Permitted: Yes
Wet space: No
Addition: No
Conversion: No

105 Purdons Bay Road, McDonald's Corners, Lanark County,
Ontario, Canada, K0G 1M0

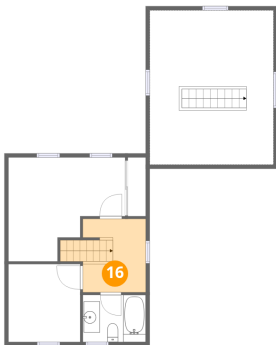
15 Floor 3 - Bedroom



Dimensions: 8'11" x 9'8"
Area: 87 sq. ft
Counted as living area: Yes

Heated: Yes
Finished: Yes
Enclosed: Yes
Contiguous: Yes
Permitted: Yes
Wet space: No
Addition: No
Conversion: No

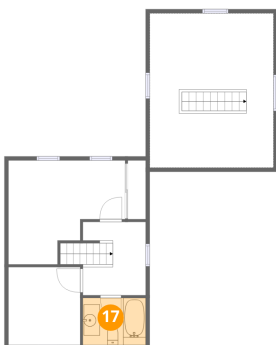
16 Floor 3 - Hall



Dimensions: 7'10" x 9'2"
Area: 78 sq. ft
Counted as living area: Yes

Heated: Yes
Finished: Yes
Enclosed: Yes
Contiguous: Yes
Permitted: Yes
Wet space: No
Addition: No
Conversion: No

17 Floor 3 - Bath

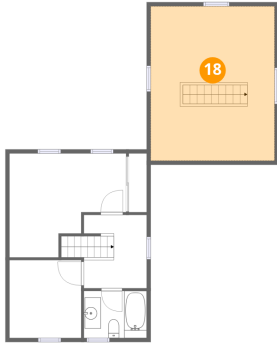


Dimensions: 7'10" x 5'10"
Area: 46 sq. ft
Counted as living area: Yes

Heated: Yes
Finished: Yes
Enclosed: Yes
Contiguous: Yes
Permitted: Yes
Wet space: Yes
Addition: No
Conversion: No

105 Purdons Bay Road, McDonald's Corners, Lanark County,
Ontario, Canada, K0G 1M0

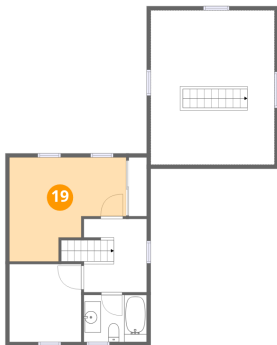
18 Floor 3 - Loft



Dimensions: 15'5" x 19'3"
Area: 297 sq. ft
Counted as living area: Yes

Heated: Yes
Finished: Yes
Enclosed: Yes
Contiguous: Yes
Permitted: Yes
Wet space: No
Addition: No
Conversion: No

19 Floor 3 - Primary Bedroom



Dimensions: 14'6" x 12'11"
Area: 148 sq. ft
Counted as living area: Yes

Heated: Yes
Finished: Yes
Enclosed: Yes
Contiguous: Yes
Permitted: Yes
Wet space: No
Addition: No
Conversion: No