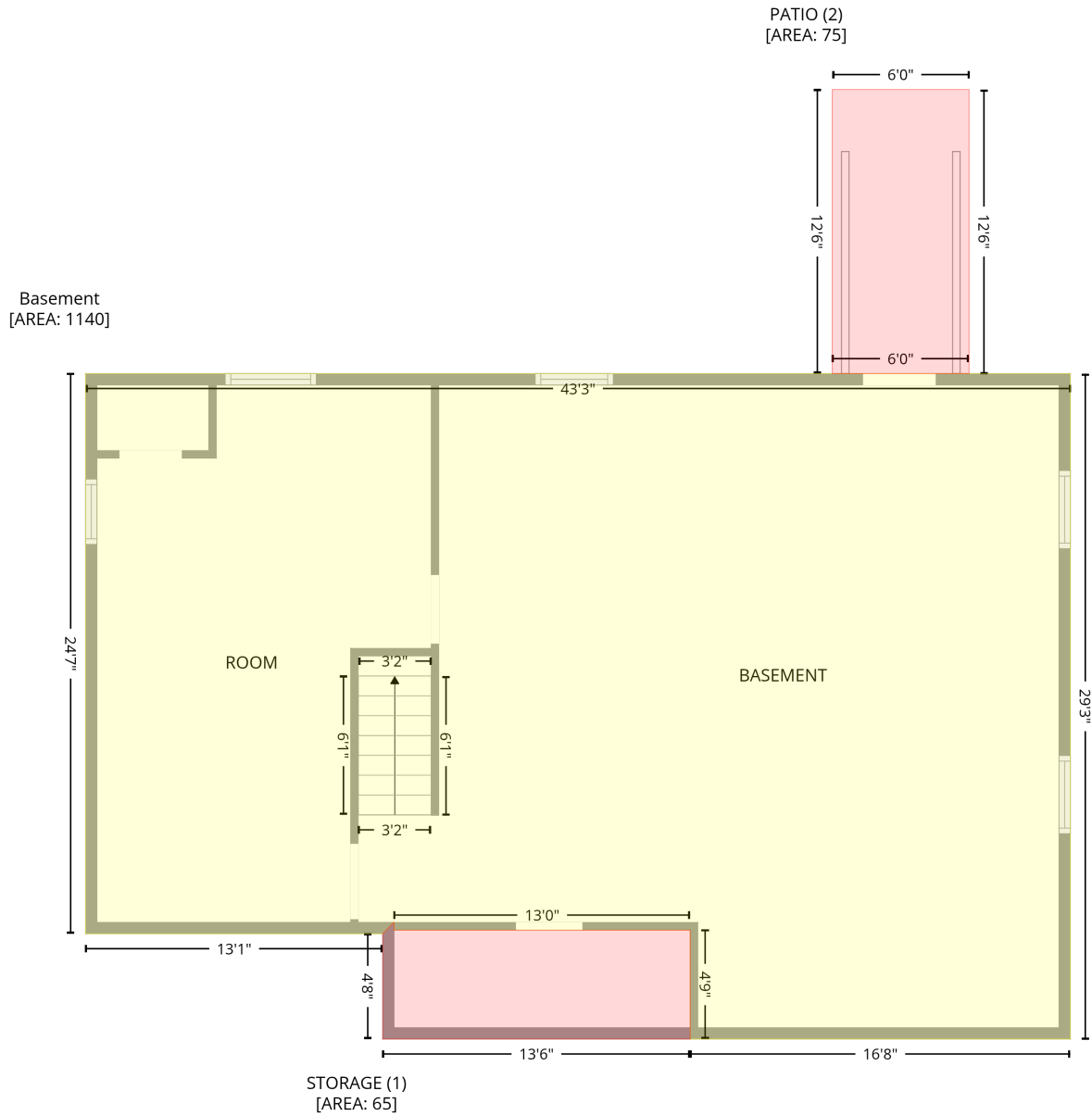


# 249 Gilbert Lane, Chase City, Lunenburg County, Virginia, United States, 23974

Gross Living Area: 1110 sq. ft

## Level 1 - Below Grade



Space	Area (sq. ft)	Calculation
Basement (Living area)	1140	Coordinate Polygon Area Algorithm using inches $-((682.5 + 682.5) * (202.7 - 553.6) + (682.5 + 482) * (553.6 - 553.6) + (482 + 482) * (553.6 - 496.1) + (482 + 325.8) * (496.1 - 496.1) + (325.8 + 325.8) * (496.1 - 492.1) + (325.8 + 325.6) * (492.1 - 492.1) + (325.6 + 319.8) * (492.1 - 498.1) + (319.8 + 163.1) * (498.1 - 498.1) + (163.1 + 163.1) * (498.1 - 202.7) + (163.1 + 682.5) * (202.7 - 202.7)) * 0.5 * 0.00694$
STORAGE (Non-living area)	65	$-((325.8 + 325.8) * (492.1 - 496.1) + (325.8 + 482) * (496.1 - 496.1) + (482 + 482) * (496.1 - 553.6) + (482 + 319.8) * (553.6 - 553.6) + (319.8 + 319.8) * (553.6 - 498.1) + (319.8 + 325.6) * (498.1 - 492.1) + (325.6 + 325.8) * (492.1 - 492.1)) * 0.5 * 0.00694$

# 249 Gilbert Lane, Chase City, Lunenburg County, Virginia, United States, 23974

Gross Living Area: 1110 sq. ft

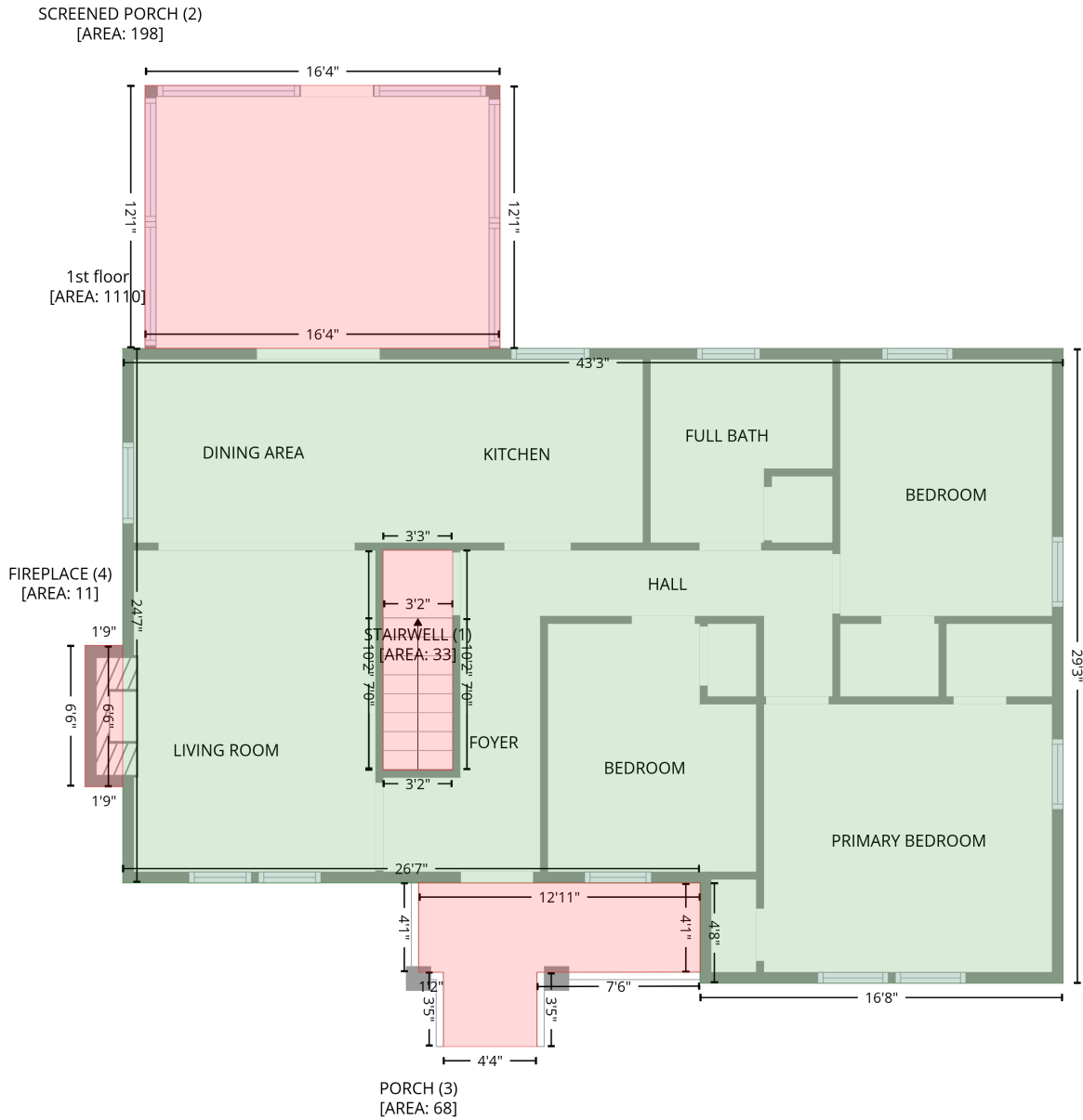
## Level 1 - Below Grade

Space	Area (sq. ft)	Calculation <small>Coordinate Polygon Area Algorithm using inches</small>
PATIO (Non-living area)	75	$-\left((629 + 629) * (52.9 - 202.7) + (629 + 556.9) * (202.7 - 202.7) + (556.9 + 556.9) * (202.7 - 52.9) + (556.9 + 629) * (52.9 - 52.9)\right) * 0.5 * 0.00694$

# 249 Gilbert Lane, Chase City, Lunenburg County, Virginia, United States, 23974

Gross Living Area: 1110 sq. ft

## Level 2



Space	Area (sq. ft)	Calculation
1st floor (Living area)	1110	Coordinate Polygon Area Algorithm using inches $-((682.5 + 682.5) * (202.7 - 553.6) + (682.5 + 482) * (553.6 - 553.6) + (482 + 482) * (553.6 - 498.1) + (482 + 163.1) * (498.1 - 498.1) + (163.1 + 163.1) * (498.1 - 202.7) + (163.1 + 682.5) * (202.7 - 202.7)) * 0.5 * 0.00694 + -((345.4 + 306.8) * (314.2 - 314.2) + (306.8 + 306.8) * (314.2 - 435.8) + (306.8 + 345.4) * (435.8 - 435.8) + (345.4 + 345.4) * (435.8 - 314.2)) * 0.5 * 0.00694$
STAIRWELL (Non-living area)	33	$-((345.4 + 345.4) * (314.2 - 435.8) + (345.4 + 306.8) * (435.8 - 435.8) + (306.8 + 306.8) * (435.8 - 314.2) + (306.8 + 345.4) * (314.2 - 314.2)) * 0.5 * 0.00694$

# 249 Gilbert Lane, Chase City, Lunenburg County, Virginia, United States, 23974

Gross Living Area: 1110 sq. ft

## Level 2

Space	Area (sq. ft)	Calculation <small>Coordinate Polygon Area Algorithm using inches</small>
SCREENED PORCH (Non-living area)	198	$-((371.4 + 371.4) * (57.5 - 202.7) + (371.4 + 175.4) * (202.7 - 202.7) + (175.4 + 175.4) * (202.7 - 57.5) + (175.4 + 371.4) * (57.5 - 57.5)) * 0.5 * 0.00694$
PORCH (Non-living area)	68	$-((482 + 482) * (498.1 - 547.3) + (482 + 391.9) * (547.3 - 547.5) + (391.9 + 391.9) * (547.5 - 588.6) + (391.9 + 340.2) * (588.6 - 588.6) + (340.2 + 340.2) * (588.6 - 547.5) + (340.2 + 326.5) * (547.5 - 547.5) + (326.5 + 326.5) * (547.5 - 498.1) + (326.5 + 482) * (498.1 - 498.1)) * 0.5 * 0.00694$
FIREPLACE (Non-living area)	11	$-((163.1 + 163.1) * (366.9 - 445) + (163.1 + 142.3) * (445 - 445) + (142.3 + 142.3) * (445 - 366.9) + (142.3 + 163.1) * (366.9 - 366.9)) * 0.5 * 0.00694$