

Home data report

1633 Sawmill Road, Ferrum, Franklin County, Virginia, United States, 24088



Total Area: 3207 sq. ft

Basement: 970 sq. ft, 1st Floor: 1334 sq. ft, 2nd Floor: 903 sq. ft

Excluded: Utility 109 sq. ft, Storage 246 sq. ft, Screened porch 221 sq. ft, Porch 370 sq. ft, Deck 864 sq. ft, Open to below 323 sq. ft, Walls: 273 sq. ft

Property summary

 **3** Floors

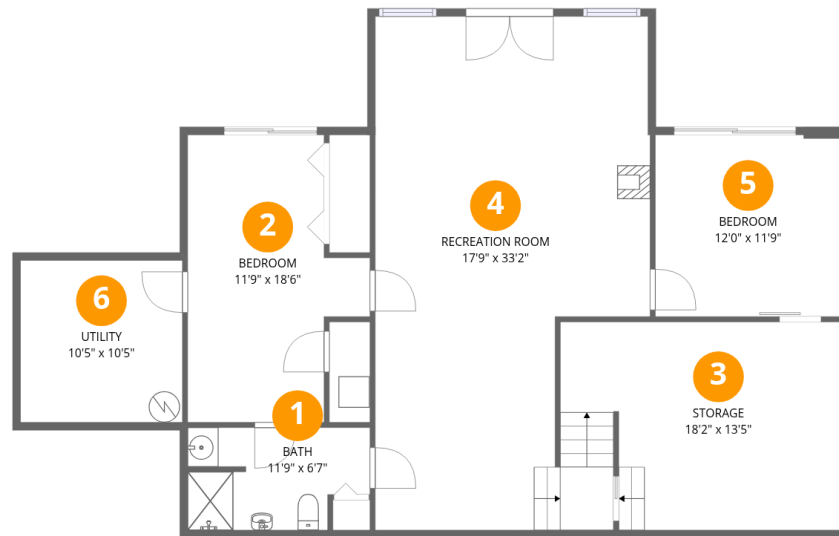
 **5** Bedrooms

 **3** Bathrooms

 **1** Half baths

Home data report

1633 Sawmill Road, Ferrum, Franklin County, Virginia, United States, 24088



Room dimensions

Floor 1 Below grade

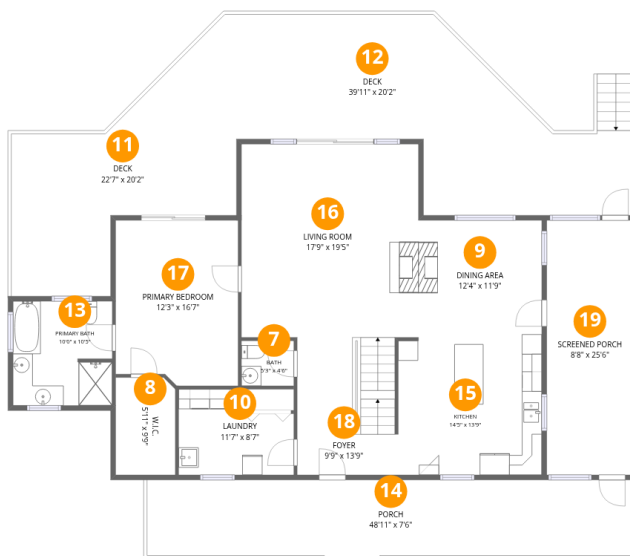
Total:970sqft

Excluded: 355sqft

#		Dimensions	sqft	Counted as living area
1	Bath	11'9" x 6'7"	70 sq. ft	Yes
2	Bedroom	11'9" x 18'6"	175 sq. ft	Yes
3	Storage	18'2" x 13'5"	243 sq. ft	No
4	Recreation Room	17'9" x 33'2"	503 sq. ft	Yes
5	Bedroom	12'0" x 11'9"	141 sq. ft	Yes
6	Utility	10'5" x 10'5"	109 sq. ft	No

Home data report

1633 Sawmill Road, Ferrum, Franklin County, Virginia, United States, 24088



Room dimensions

Floor 2

Total:1334sqft

Excluded: 1455sqft

#		Dimensions	sqft	Counted as living area
7	Bath	5'3" x 4'6"	24 sq. ft	Yes
8	W.I.C.	5'11" x 9'9"	58 sq. ft	Yes
9	Dining Area	12'4" x 11'9"	145 sq. ft	Yes
10	Laundry	11'7" x 8'7"	86 sq. ft	Yes
11	Deck	22'7" x 20'2"	351 sq. ft	No
12	Deck	39'11" x 20'2"	513 sq. ft	No
13	Primary Bath	10'0" x 10'5"	103 sq. ft	Yes
14	Porch	48'11" x 7'6"	370 sq. ft	No
15	Kitchen	14'5" x 13'9"	203 sq. ft	Yes
16	Living Room	17'9" x 19'5"	344 sq. ft	Yes
17	Primary Bedroom	12'3" x 16'7"	197 sq. ft	Yes

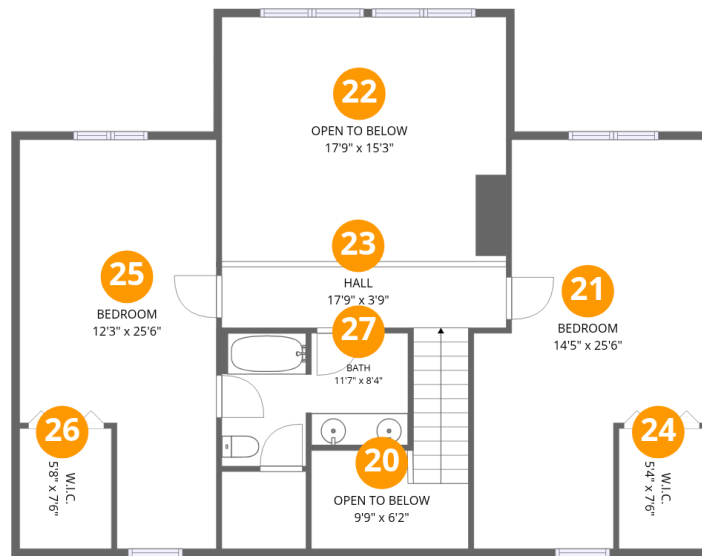
Home data report

1633 Sawmill Road, Ferrum, Franklin County, Virginia, United States, 24088

#		Dimensions	sqft	Counted as living area
18	Foyer	9'9" x 13'9"	135 sq. ft	Yes
19	Screened Porch	8'8" x 25'6"	221 sq. ft	No

Home data report

1633 Sawmill Road, Ferrum, Franklin County, Virginia, United States, 24088



Room dimensions

Floor 3

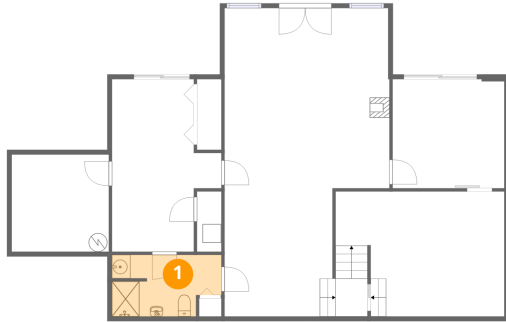
Total:903sqft

Excluded: 323sqft

#		Dimensions	sqft	Counted as living area
20	Open To Below	9'9" x 6'2"	52 sq. ft	No
21	Bedroom	14'5" x 25'6"	294 sq. ft	Yes
22	Open To Below	17'9" x 15'3"	271 sq. ft	No
23	Hall	17'9" x 3'9"	107 sq. ft	Yes
24	W.I.C.	5'4" x 7'6"	40 sq. ft	Yes
25	Bedroom	12'3" x 25'6"	266 sq. ft	Yes
26	W.I.C.	5'8" x 7'6"	43 sq. ft	Yes
27	Bath	11'7" x 8'4"	87 sq. ft	Yes

1633 Sawmill Road, Ferrum, Franklin County, Virginia, United States, 24088

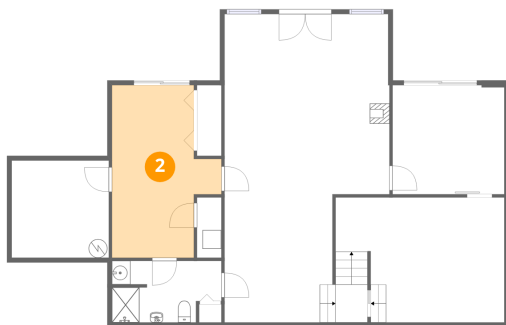
1 Floor 1 - Bath



Dimensions: 11'9" x 6'7"
Area: 70 sq. ft
Counted as living area: Yes

Heated: Yes
Finished: Yes
Enclosed: Yes
Contiguous: Yes
Permitted: Yes
Wet space: Yes
Addition: No
Conversion: No

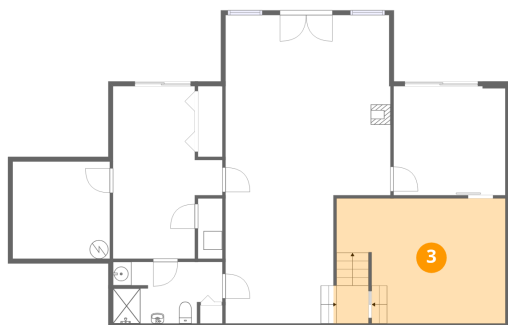
2 Floor 1 - Bedroom



Dimensions: 11'9" x 18'6"
Area: 175 sq. ft
Counted as living area: Yes

Heated: Yes
Finished: Yes
Enclosed: Yes
Contiguous: Yes
Permitted: Yes
Wet space: No
Addition: No
Conversion: No

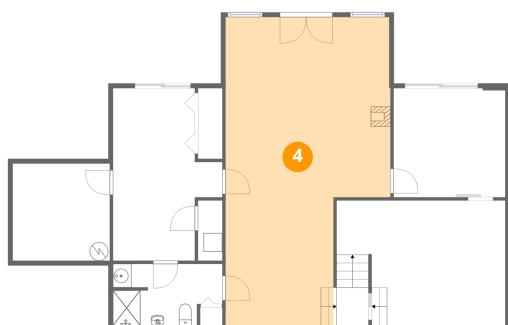
3 Floor 1 - Storage



Dimensions: 18'2" x 13'5"
Area: 243 sq. ft
Counted as living area: No

Heated: No
Finished: No
Enclosed: No
Contiguous: Yes
Permitted: Yes
Wet space: No
Addition: No
Conversion: No

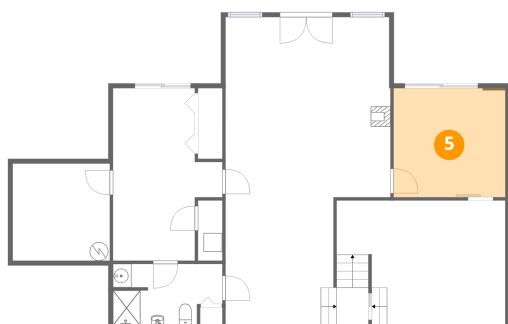
4 Floor 1 - Recreation Room



Dimensions: 17'9" x 33'2"
Area: 503 sq. ft
Counted as living area: Yes

Heated: Yes
Finished: Yes
Enclosed: Yes
Contiguous: Yes
Permitted: Yes
Wet space: No
Addition: No
Conversion: No

5 Floor 1 - Bedroom



Dimensions: 12'0" x 11'9"
Area: 141 sq. ft
Counted as living area: Yes

Heated: Yes
Finished: Yes
Enclosed: Yes
Contiguous: Yes
Permitted: Yes
Wet space: No
Addition: No
Conversion: No

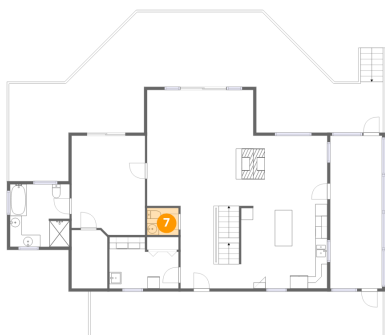
6 Floor 1 - Utility



Dimensions: 10'5" x 10'5"
Area: 109 sq. ft
Counted as living area: No

Heated: Yes
Finished: No
Enclosed: Yes
Contiguous: Yes
Permitted: Yes
Wet space: No
Addition: No
Conversion: No

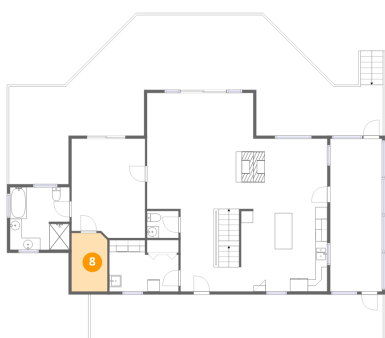
7 Floor 2 - Bath



Dimensions: 5'3" x 4'6"
Area: 24 sq. ft
Counted as living area: Yes

Heated: Yes
Finished: Yes
Enclosed: Yes
Contiguous: Yes
Permitted: Yes
Wet space: Yes
Addition: No
Conversion: No

8 Floor 2 - W.I.C.

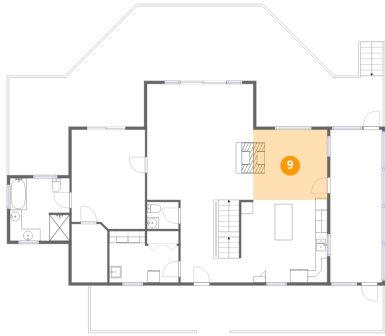


Dimensions: 5'11" x 9'9"
Area: 58 sq. ft
Counted as living area: Yes

Heated: Yes
Finished: Yes
Enclosed: Yes
Contiguous: Yes
Permitted: Yes
Wet space: No
Addition: No
Conversion: No

1633 Sawmill Road, Ferrum, Franklin County, Virginia, United States, 24088

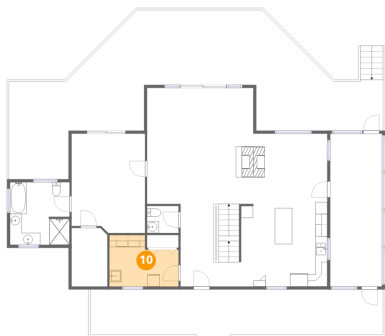
9 Floor 2 - Dining Area



Dimensions: 12'4" x 11'9"
Area: 145 sq. ft
Counted as living area: Yes

Heated: Yes
Finished: Yes
Enclosed: Yes
Contiguous: Yes
Permitted: Yes
Wet space: No
Addition: No
Conversion: No

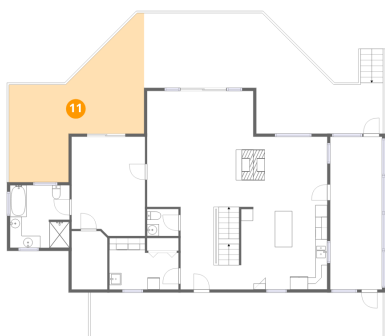
10 Floor 2 - Laundry



Dimensions: 11'7" x 8'7"
Area: 86 sq. ft
Counted as living area: Yes

Heated: Yes
Finished: Yes
Enclosed: Yes
Contiguous: Yes
Permitted: Yes
Wet space: No
Addition: No
Conversion: No

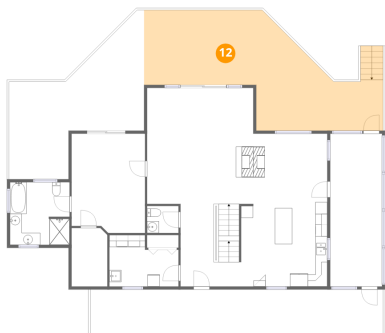
11 Floor 2 - Deck



Dimensions: 22'7" x 20'2"
Area: 351 sq. ft
Counted as living area: No

Heated: No
Finished: No
Enclosed: No
Contiguous: Yes
Permitted: Yes
Wet space: No
Addition: No
Conversion: No

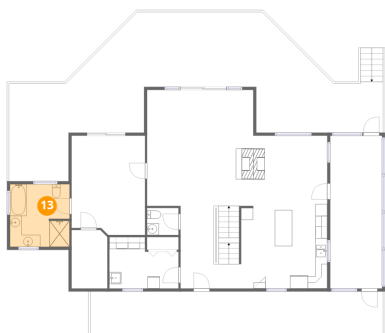
12 Floor 2 - Deck



Dimensions: 39'11" x 20'2"
Area: 513 sq. ft
Counted as living area: No

Heated: No
Finished: No
Enclosed: No
Contiguous: Yes
Permitted: Yes
Wet space: No
Addition: No
Conversion: No

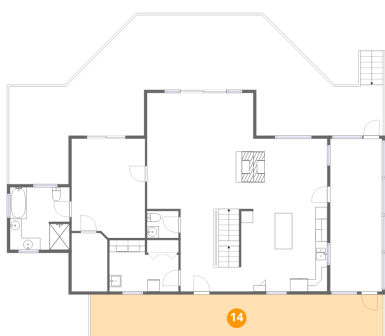
13 Floor 2 - Primary Bath



Dimensions: 10'0" x 10'5"
Area: 103 sq. ft
Counted as living area: Yes

Heated: Yes
Finished: Yes
Enclosed: Yes
Contiguous: Yes
Permitted: Yes
Wet space: Yes
Addition: No
Conversion: No

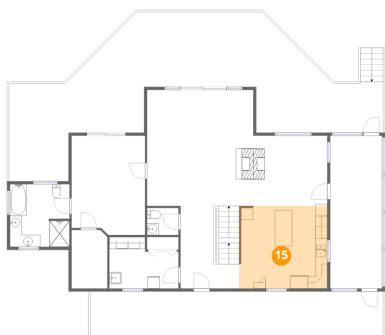
14 Floor 2 - Porch



Dimensions: 48'11" x 7'6"
Area: 370 sq. ft
Counted as living area: No

Heated: No
Finished: No
Enclosed: No
Contiguous: Yes
Permitted: Yes
Wet space: No
Addition: No
Conversion: No

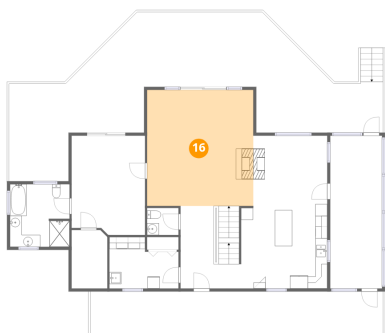
15 Floor 2 - Kitchen



Dimensions: 14'5" x 13'9"
Area: 203 sq. ft
Counted as living area: Yes

Heated: Yes
Finished: Yes
Enclosed: Yes
Contiguous: Yes
Permitted: Yes
Wet space: No
Addition: No
Conversion: No

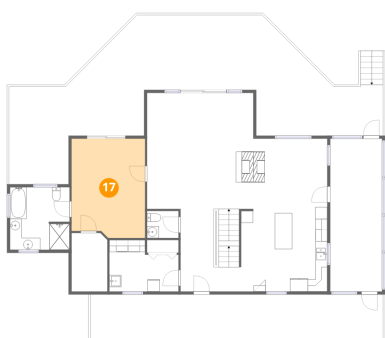
16 Floor 2 - Living Room



Dimensions: 17'9" x 19'5"
Area: 344 sq. ft
Counted as living area: Yes

Heated: Yes
Finished: Yes
Enclosed: Yes
Contiguous: Yes
Permitted: Yes
Wet space: No
Addition: No
Conversion: No

17 Floor 2 - Primary Bedroom

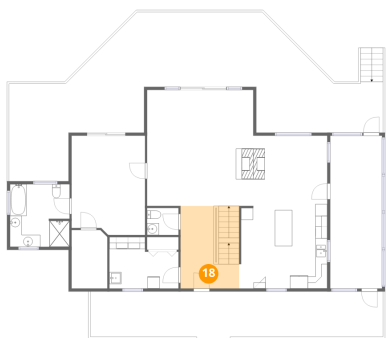


Dimensions: 12'3" x 16'7"
Area: 197 sq. ft
Counted as living area: Yes

Heated: Yes
Finished: Yes
Enclosed: Yes
Contiguous: Yes
Permitted: Yes
Wet space: No
Addition: No
Conversion: No

1633 Sawmill Road, Ferrum, Franklin County, Virginia, United States, 24088

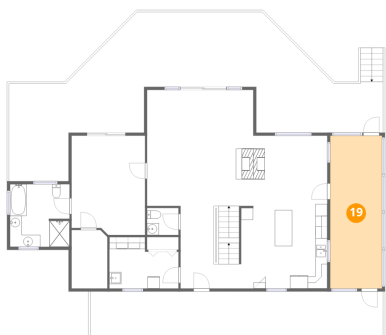
18 Floor 2 - Foyer



Dimensions: 9'9" x 13'9"
Area: 135 sq. ft
Counted as living area: Yes

Heated: Yes
Finished: Yes
Enclosed: Yes
Contiguous: Yes
Permitted: Yes
Wet space: No
Addition: No
Conversion: No

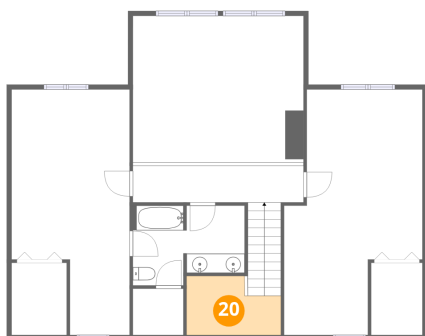
19 Floor 2 - Screened Porch



Dimensions: 8'8" x 25'6"
Area: 221 sq. ft
Counted as living area: No

Heated: No
Finished: No
Enclosed: No
Contiguous: Yes
Permitted: Yes
Wet space: No
Addition: No
Conversion: No

20 Floor 3 - Open To Below

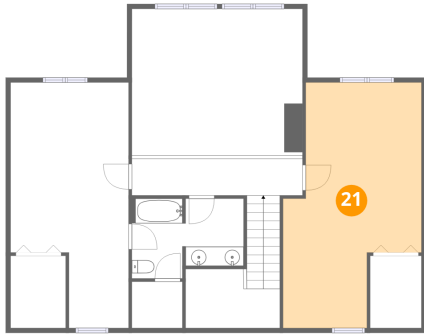


Dimensions: 9'9" x 6'2"
Area: 52 sq. ft
Counted as living area: No

Heated: No
Finished: No
Enclosed: No
Contiguous: Yes
Permitted: No
Wet space: No
Addition: No
Conversion: No

1633 Sawmill Road, Ferrum, Franklin County, Virginia, United States, 24088

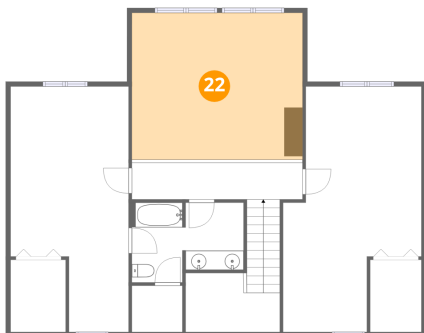
21 Floor 3 - Bedroom



Dimensions: 14'5" x 25'6"
Area: 294 sq. ft
Counted as living area: Yes

Heated: Yes
Finished: Yes
Enclosed: Yes
Contiguous: Yes
Permitted: Yes
Wet space: No
Addition: No
Conversion: No

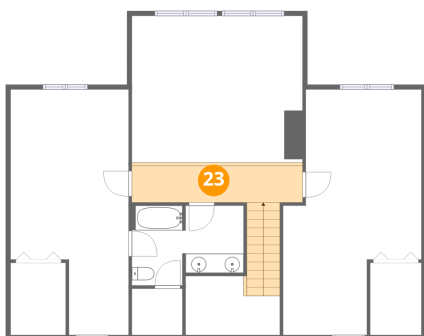
22 Floor 3 - Open To Below



Dimensions: 17'9" x 15'3"
Area: 271 sq. ft
Counted as living area: No

Heated: No
Finished: No
Enclosed: No
Contiguous: Yes
Permitted: No
Wet space: No
Addition: No
Conversion: No

23 Floor 3 - Hall

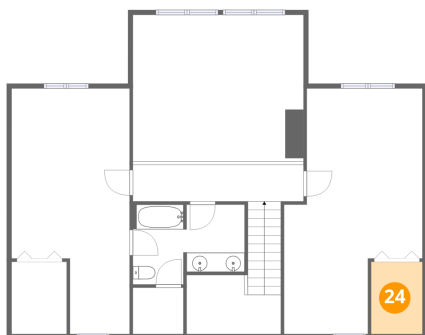


Dimensions: 17'9" x 3'9"
Area: 107 sq. ft
Counted as living area: Yes

Heated: Yes
Finished: Yes
Enclosed: Yes
Contiguous: Yes
Permitted: Yes
Wet space: No
Addition: No
Conversion: No

1633 Sawmill Road, Ferrum, Franklin County, Virginia, United States, 24088

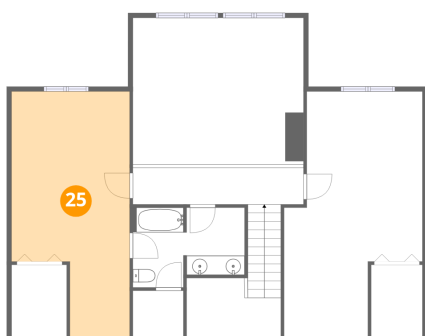
24 Floor 3 - W.I.C.



Dimensions: 5'4" x 7'6"
Area: 40 sq. ft
Counted as living area: Yes

Heated: Yes
Finished: Yes
Enclosed: Yes
Contiguous: Yes
Permitted: Yes
Wet space: No
Addition: No
Conversion: No

25 Floor 3 - Bedroom



Dimensions: 12'3" x 25'6"
Area: 266 sq. ft
Counted as living area: Yes

Heated: Yes
Finished: Yes
Enclosed: Yes
Contiguous: Yes
Permitted: Yes
Wet space: No
Addition: No
Conversion: No

26 Floor 3 - W.I.C.



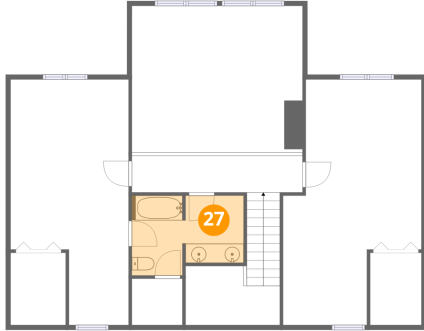
Dimensions: 5'8" x 7'6"
Area: 43 sq. ft
Counted as living area: Yes

Heated: Yes
Finished: Yes
Enclosed: Yes
Contiguous: Yes
Permitted: Yes
Wet space: No
Addition: No
Conversion: No

Home data report

1633 Sawmill Road, Ferrum, Franklin County, Virginia, United States, 24088

27 Floor 3 - Bath



Dimensions: 11'7" x 8'4"
Area: 87 sq. ft
Counted as living area: Yes

Heated: Yes
Finished: Yes
Enclosed: Yes
Contiguous: Yes
Permitted: Yes
Wet space: Yes
Addition: No
Conversion: No