

24 Foley Cres, collingwood, ON, CA



Total Area: 1231 sq. ft

Basement: 0 sq. ft, 1st Floor: 536 sq. ft, 2nd Floor: 695 sq. ft

Excluded: Basement 536 sq. ft, Garage 287 sq. ft, Deck 234 sq. ft, Walls: 182 sq. ft

Property summary



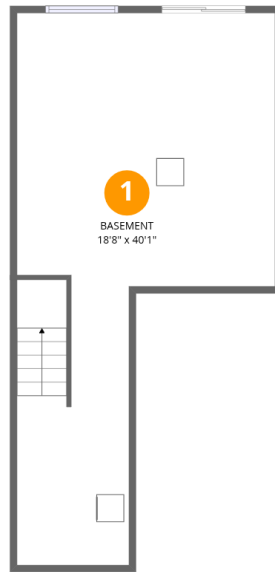
Home data report

24 Foley Cres, collingwood, ON, CA

 **1**
Half baths

 **1**
Garages

24 Foley Cres, collingwood, ON, CA



Room dimensions

Floor 1 Below grade

Total: 0sqft

Excluded: 536sqft

#		Dimensions	sqft	Counted as living area
1	Basement	18'8" x 40'1"	531 sq. ft	No

24 Foley Cres, collingwood, ON, CA



Room dimensions

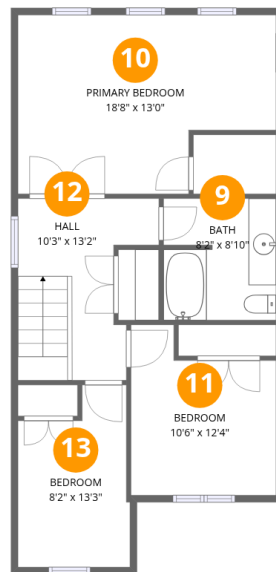
Floor 2

Total: 536 sqft

Excluded: 521 sqft

#		Dimensions	sqft	Counted as living area
2	Bath	4'3" x 5'5"	21 sq. ft	Yes
3	Deck	20'5" x 11'6"	234 sq. ft	No
4	Dining Area	8'3" x 10'1"	79 sq. ft	Yes
5	Garage	14'6" x 19'9"	287 sq. ft	No
6	Foyer	8'1" x 20'2"	134 sq. ft	Yes
7	Living Room	18'8" x 9'8"	181 sq. ft	Yes
8	Kitchen	10'6" x 10'2"	105 sq. ft	Yes

24 Foley Cres, collingwood, ON, CA



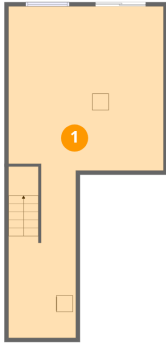
Room dimensions

Floor 3

Total:695sqft Excluded: 0sqft

#		Dimensions	sqft	Counted as living area
9	Bath	8'2" x 8'10"	71 sq. ft	Yes
10	Primary Bedroom	18'8" x 13'0"	214 sq. ft	Yes
11	Bedroom	10'6" x 12'4"	111 sq. ft	Yes
12	Hall	10'3" x 13'2"	106 sq. ft	Yes
13	Bedroom	8'2" x 13'3"	93 sq. ft	Yes

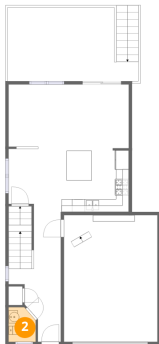
1 Floor 1 - Basement



Dimensions: 18'8" x 40'1"
Area: 531 sq. ft
Counted as living area: No

Heated: Yes
Finished: No
Enclosed: Yes
Contiguous: Yes
Permitted: Yes
Wet space: No
Addition: No
Conversion: No

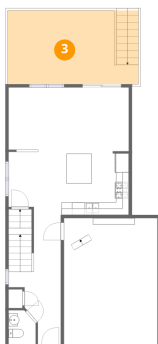
2 Floor 2 - Bath



Dimensions: 4'3" x 5'5"
Area: 21 sq. ft
Counted as living area: Yes

Heated: Yes
Finished: Yes
Enclosed: Yes
Contiguous: Yes
Permitted: Yes
Wet space: Yes
Addition: No
Conversion: No

3 Floor 2 - Deck



Dimensions: 20'5" x 11'6"
Area: 234 sq. ft
Counted as living area: No

Heated: No
Finished: No
Enclosed: No
Contiguous: Yes
Permitted: Yes
Wet space: No
Addition: No
Conversion: No

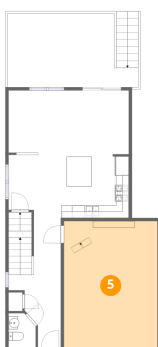
4 Floor 2 - Dining Area



Dimensions: 8'3" x 10'1"
Area: 79 sq. ft
Counted as living area: Yes

Heated: Yes
Finished: Yes
Enclosed: Yes
Contiguous: Yes
Permitted: Yes
Wet space: No
Addition: No
Conversion: No

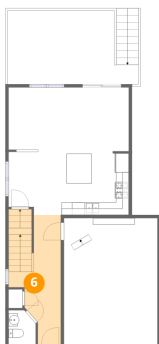
5 Floor 2 - Garage



Dimensions: 14'6" x 19'9"
Area: 287 sq. ft
Counted as living area: No

Heated: No
Finished: No
Enclosed: Yes
Contiguous: Yes
Permitted: Yes
Wet space: No
Addition: No
Conversion: No

6 Floor 2 - Foyer



Dimensions: 8'1" x 20'2"
Area: 134 sq. ft
Counted as living area: Yes

Heated: Yes
Finished: Yes
Enclosed: Yes
Contiguous: Yes
Permitted: Yes
Wet space: No
Addition: No
Conversion: No

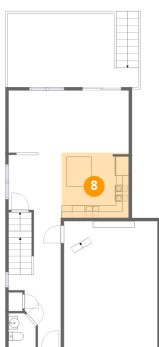
7 Floor 2 - Living Room



Dimensions: 18'8" x 9'8"
Area: 181 sq. ft
Counted as living area: Yes

Heated: Yes
Finished: Yes
Enclosed: Yes
Contiguous: Yes
Permitted: Yes
Wet space: No
Addition: No
Conversion: No

8 Floor 2 - Kitchen



Dimensions: 10'6" x 10'2"
Area: 105 sq. ft
Counted as living area: Yes

Heated: Yes
Finished: Yes
Enclosed: Yes
Contiguous: Yes
Permitted: Yes
Wet space: No
Addition: No
Conversion: No

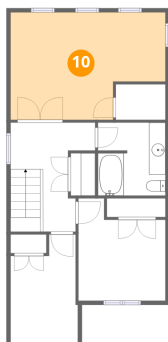
9 Floor 3 - Bath



Dimensions: 8'2" x 8'10"
Area: 71 sq. ft
Counted as living area: Yes

Heated: Yes
Finished: Yes
Enclosed: Yes
Contiguous: Yes
Permitted: Yes
Wet space: Yes
Addition: No
Conversion: No

10 Floor 3 - Primary Bedroom



Dimensions: 18'8" x 13'0"
Area: 214 sq. ft
Counted as living area: Yes

Heated: Yes
Finished: Yes
Enclosed: Yes
Contiguous: Yes
Permitted: Yes
Wet space: No
Addition: No
Conversion: No

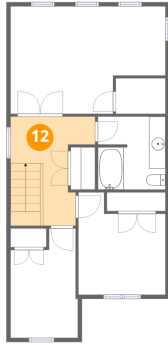
11 Floor 3 - Bedroom



Dimensions: 10'6" x 12'4"
Area: 111 sq. ft
Counted as living area: Yes

Heated: Yes
Finished: Yes
Enclosed: Yes
Contiguous: Yes
Permitted: Yes
Wet space: No
Addition: No
Conversion: No

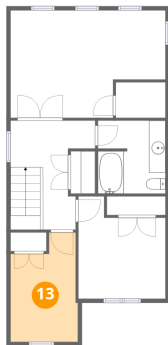
12 Floor 3 - Hall



Dimensions: 10'3" x 13'2"
Area: 106 sq. ft
Counted as living area: Yes

Heated: Yes
Finished: Yes
Enclosed: Yes
Contiguous: Yes
Permitted: Yes
Wet space: No
Addition: No
Conversion: No

13 Floor 3 - Bedroom



Dimensions: 8'2" x 13'3"
Area: 93 sq. ft
Counted as living area: Yes

Heated: Yes
Finished: Yes
Enclosed: Yes
Contiguous: Yes
Permitted: Yes
Wet space: No
Addition: No
Conversion: No