

## Home data report

**3416 Grandin Road, Greater Deyerle, Roanoke, Roanoke city, Virginia, United States, 24018**



**Total Area: 1843 sq. ft**

Basement 2: 0 sq. ft, Basement 1: 0 sq. ft, 1st Floor: 1040 sq. ft, 2nd Floor: 803 sq. ft  
Excluded: Basement 739 sq. ft, Utility 298 sq. ft, Storage 143 sq. ft, Patio 525 sq. ft, Garage 253 sq. ft, Fireplace 13 sq. ft, Walls: 254 sq. ft

## Property summary

 **4** Floors

 **4** Bedrooms

 **2** Bathrooms

Home data report

**3416 Grandin Road, Greater Deyerle, Roanoke, Roanoke city,  
Virginia, United States, 24018**



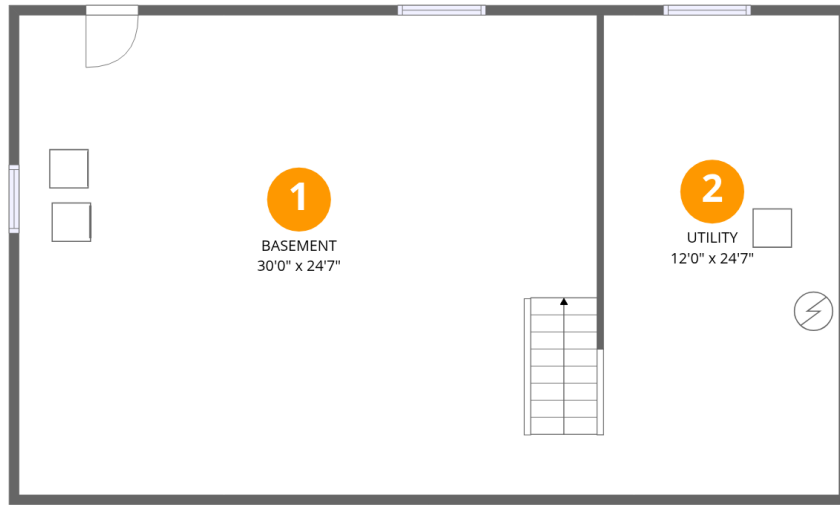
**1**  
Half baths



**1**  
Garages

Home data report

3416 Grandin Road, Greater Deyerle, Roanoke, Roanoke city, Virginia, United States, 24018



## Room dimensions

Floor 1 Below grade

Total:0sqft

Excluded: 1037sqft

#		Dimensions	sqft	Counted as living area
1	Basement	30'0" x 24'7"	733 sq. ft	No
2	Utility	12'0" x 24'7"	298 sq. ft	No

Home data report

3416 Grandin Road, Greater Deyerle, Roanoke, Roanoke city, Virginia, United States, 24018



## Room dimensions

Floor 2 Below grade

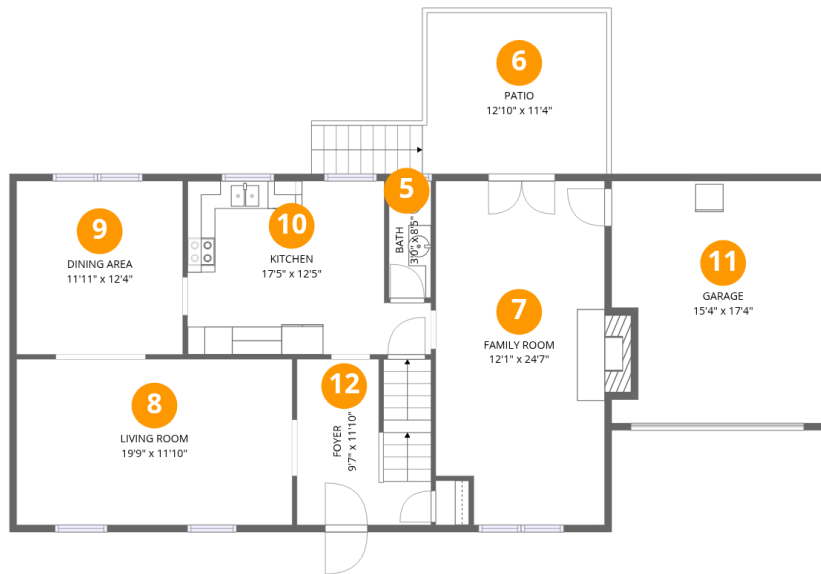
Total:0sqft

Excluded: 518sqft

#		Dimensions	sqft	Counted as living area
3	Patio	27'6" x 17'1"	375 sq. ft	No
4	Storage	12'7" x 11'5"	143 sq. ft	No

## Home data report

3416 Grandin Road, Greater Deyerle, Roanoke, Roanoke city, Virginia, United States, 24018



## Room dimensions

Floor 3

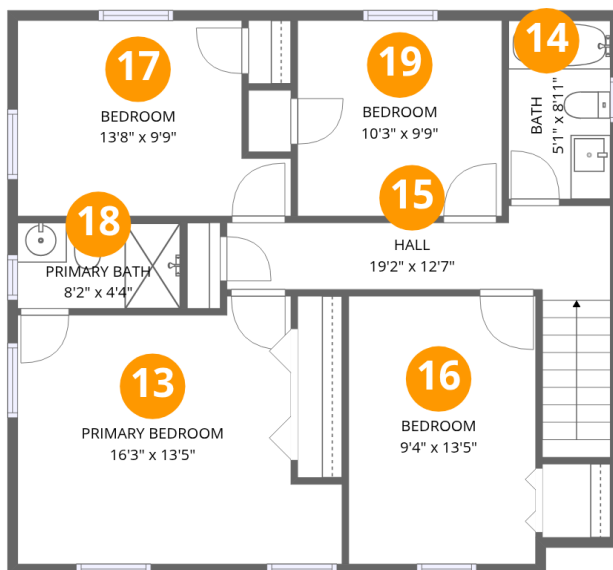
Total:1040sqft

Excluded: 416sqft

#		Dimensions	sqft	Counted as living area
5	Bath	3'0" x 8'5"	25 sq. ft	Yes
6	Patio	12'10" x 11'4"	150 sq. ft	No
7	Family Room	12'1" x 24'7"	299 sq. ft	Yes
8	Living Room	19'9" x 11'10"	234 sq. ft	Yes
9	Dining Area	11'11" x 12'4"	148 sq. ft	Yes
10	Kitchen	17'5" x 12'5"	188 sq. ft	Yes
11	Garage	15'4" x 17'4"	253 sq. ft	No
12	Foyer	9'7" x 11'10"	112 sq. ft	Yes

Home data report

3416 Grandin Road, Greater Deyerle, Roanoke, Roanoke city, Virginia, United States, 24018



## Room dimensions

Floor 4

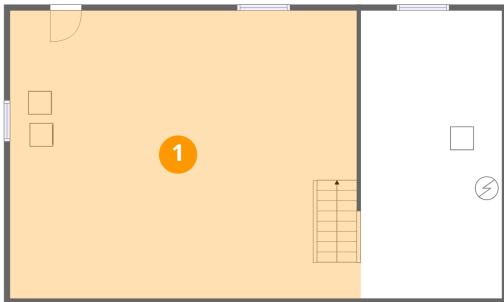
Total:803sqft Excluded: 0sqft

#		Dimensions	sqft	Counted as living area
13	Primary Bedroom	16'3" x 13'5"	184 sq. ft	Yes
14	Bath	5'1" x 8'11"	46 sq. ft	Yes
15	Hall	19'2" x 12'7"	97 sq. ft	Yes
16	Bedroom	9'4" x 13'5"	126 sq. ft	Yes
17	Bedroom	13'8" x 9'9"	117 sq. ft	Yes
18	Primary Bath	8'2" x 4'4"	35 sq. ft	Yes
19	Bedroom	10'3" x 9'9"	100 sq. ft	Yes

**3416 Grandin Road, Greater Deyerle, Roanoke, Roanoke city,  
Virginia, United States, 24018**

**1 Floor 1 - Basement**

---

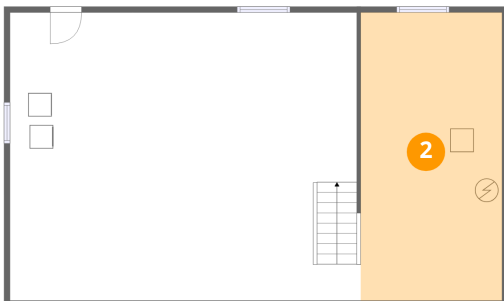


Dimensions: 30'0" x 24'7"  
Area: 733 sq. ft  
Counted as living area: No

Heated: Yes  
Finished: No  
Enclosed: Yes  
Contiguous: Yes  
Permitted: Yes  
Wet space: No  
Addition: No  
Conversion: No

**2 Floor 1 - Utility**

---

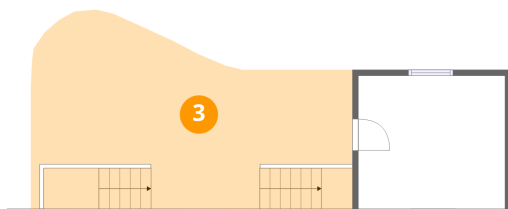


Dimensions: 12'0" x 24'7"  
Area: 298 sq. ft  
Counted as living area: No

Heated: Yes  
Finished: No  
Enclosed: Yes  
Contiguous: Yes  
Permitted: Yes  
Wet space: No  
Addition: No  
Conversion: No

3416 Grandin Road, Greater Deyerle, Roanoke, Roanoke city, Virginia, United States, 24018

### 3 Floor 2 - Patio



Dimensions: 27'6" x 17'1"  
Area: 375 sq. ft  
Counted as living area: No

Heated: No  
Finished: No  
Enclosed: No  
Contiguous: Yes  
Permitted: Yes  
Wet space: No  
Addition: No  
Conversion: No

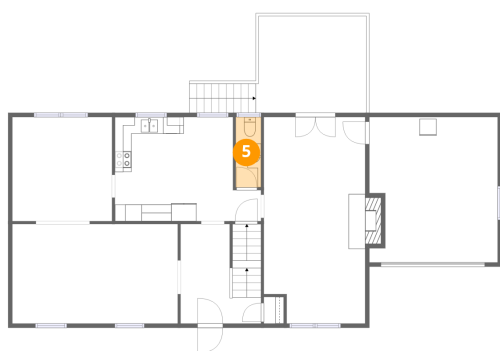
### 4 Floor 2 - Storage



Dimensions: 12'7" x 11'5"  
Area: 143 sq. ft  
Counted as living area: No

Heated: No  
Finished: No  
Enclosed: No  
Contiguous: Yes  
Permitted: Yes  
Wet space: No  
Addition: No  
Conversion: No

### 5 Floor 3 - Bath

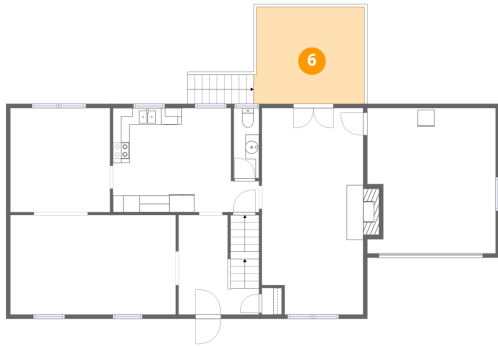


Dimensions: 3'0" x 8'5"  
Area: 25 sq. ft  
Counted as living area: Yes

Heated: Yes  
Finished: Yes  
Enclosed: Yes  
Contiguous: Yes  
Permitted: Yes  
Wet space: Yes  
Addition: No  
Conversion: No

3416 Grandin Road, Greater Deyerle, Roanoke, Roanoke city, Virginia, United States, 24018

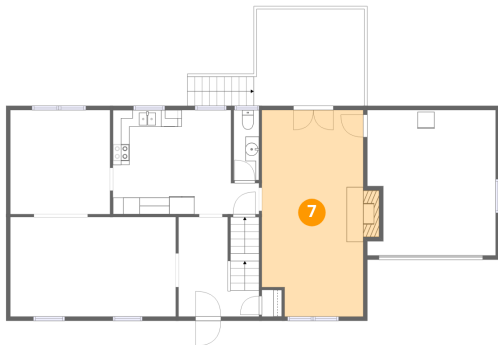
**6** Floor 3 - Patio



Dimensions: 12'10" x 11'4"  
Area: 150 sq. ft  
Counted as living area: No

Heated: No  
Finished: No  
Enclosed: No  
Contiguous: Yes  
Permitted: Yes  
Wet space: No  
Addition: No  
Conversion: No

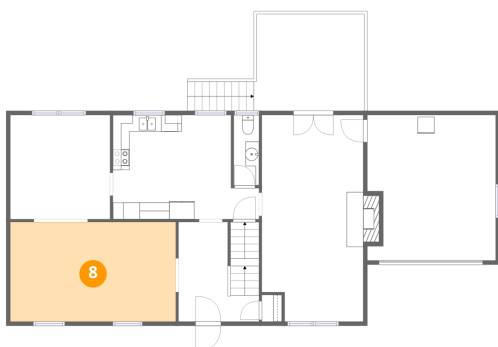
**7** Floor 3 - Family Room



Dimensions: 12'1" x 24'7"  
Area: 299 sq. ft  
Counted as living area: Yes

Heated: Yes  
Finished: Yes  
Enclosed: Yes  
Contiguous: Yes  
Permitted: Yes  
Wet space: No  
Addition: No  
Conversion: No

**8** Floor 3 - Living Room

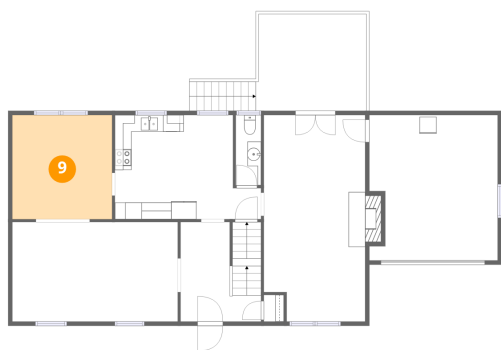


Dimensions: 19'9" x 11'10"  
Area: 234 sq. ft  
Counted as living area: Yes

Heated: Yes  
Finished: Yes  
Enclosed: Yes  
Contiguous: Yes  
Permitted: Yes  
Wet space: No  
Addition: No  
Conversion: No

3416 Grandin Road, Greater Deyerle, Roanoke, Roanoke city, Virginia, United States, 24018

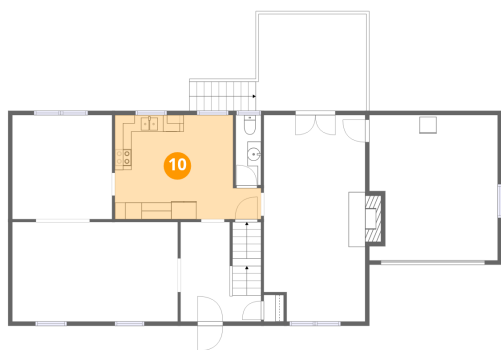
### 9 Floor 3 - Dining Area



Dimensions: 11'11" x 12'4"  
Area: 148 sq. ft  
Counted as living area: Yes

Heated: Yes  
Finished: Yes  
Enclosed: Yes  
Contiguous: Yes  
Permitted: Yes  
Wet space: No  
Addition: No  
Conversion: No

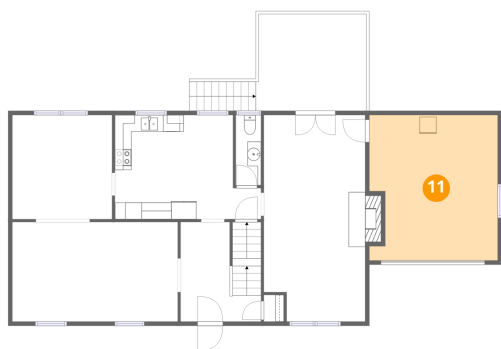
### 10 Floor 3 - Kitchen



Dimensions: 17'5" x 12'5"  
Area: 188 sq. ft  
Counted as living area: Yes

Heated: Yes  
Finished: Yes  
Enclosed: Yes  
Contiguous: Yes  
Permitted: Yes  
Wet space: No  
Addition: No  
Conversion: No

### 11 Floor 3 - Garage

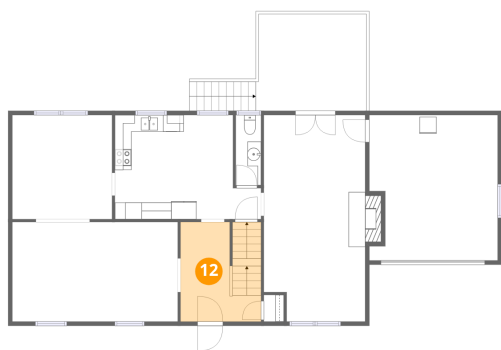


Dimensions: 15'4" x 17'4"  
Area: 253 sq. ft  
Counted as living area: No

Heated: No  
Finished: No  
Enclosed: Yes  
Contiguous: Yes  
Permitted: Yes  
Wet space: No  
Addition: No  
Conversion: No

3416 Grandin Road, Greater Deyerle, Roanoke, Roanoke city, Virginia, United States, 24018

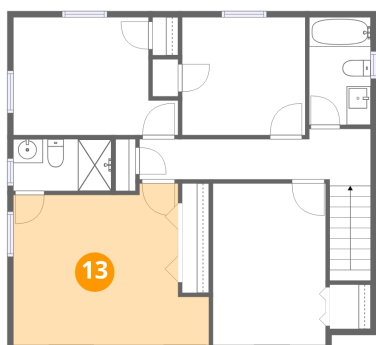
**12** Floor 3 - Foyer



Dimensions: 9'7" x 11'10"  
Area: 112 sq. ft  
Counted as living area: Yes

Heated: Yes  
Finished: Yes  
Enclosed: Yes  
Contiguous: Yes  
Permitted: Yes  
Wet space: No  
Addition: No  
Conversion: No

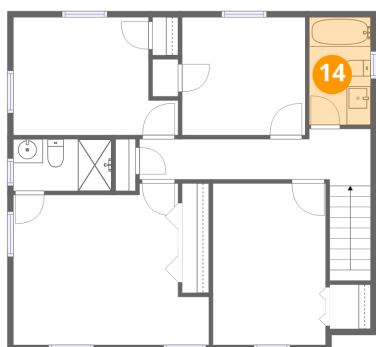
**13** Floor 4 - Primary Bedroom



Dimensions: 16'3" x 13'5"  
Area: 184 sq. ft  
Counted as living area: Yes

Heated: Yes  
Finished: Yes  
Enclosed: Yes  
Contiguous: Yes  
Permitted: Yes  
Wet space: No  
Addition: No  
Conversion: No

**14** Floor 4 - Bath

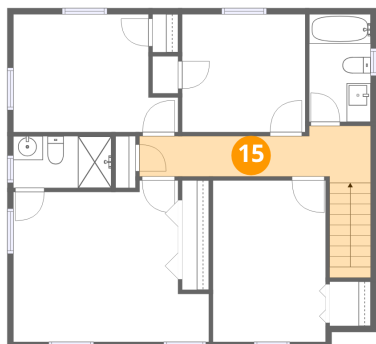


Dimensions: 5'1" x 8'11"  
Area: 46 sq. ft  
Counted as living area: Yes

Heated: Yes  
Finished: Yes  
Enclosed: Yes  
Contiguous: Yes  
Permitted: Yes  
Wet space: Yes  
Addition: No  
Conversion: No

3416 Grandin Road, Greater Deyerle, Roanoke, Roanoke city, Virginia, United States, 24018

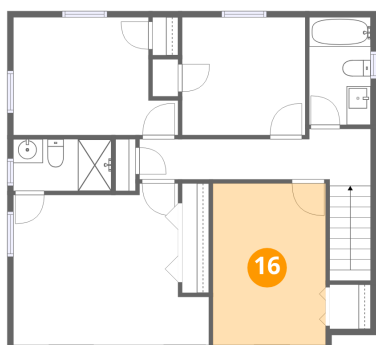
### 15 Floor 4 - Hall



Dimensions: 19'2" x 12'7"  
Area: 97 sq. ft  
Counted as living area: Yes

Heated: Yes  
Finished: Yes  
Enclosed: Yes  
Contiguous: Yes  
Permitted: Yes  
Wet space: No  
Addition: No  
Conversion: No

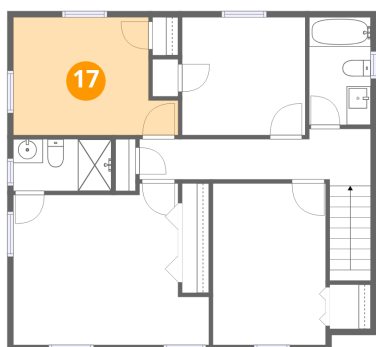
### 16 Floor 4 - Bedroom



Dimensions: 9'4" x 13'5"  
Area: 126 sq. ft  
Counted as living area: Yes

Heated: Yes  
Finished: Yes  
Enclosed: Yes  
Contiguous: Yes  
Permitted: Yes  
Wet space: No  
Addition: No  
Conversion: No

### 17 Floor 4 - Bedroom

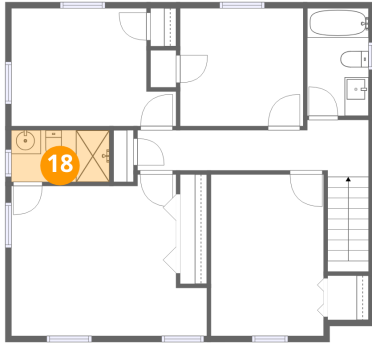


Dimensions: 13'8" x 9'9"  
Area: 117 sq. ft  
Counted as living area: Yes

Heated: Yes  
Finished: Yes  
Enclosed: Yes  
Contiguous: Yes  
Permitted: Yes  
Wet space: No  
Addition: No  
Conversion: No

3416 Grandin Road, Greater Deyerle, Roanoke, Roanoke city, Virginia, United States, 24018

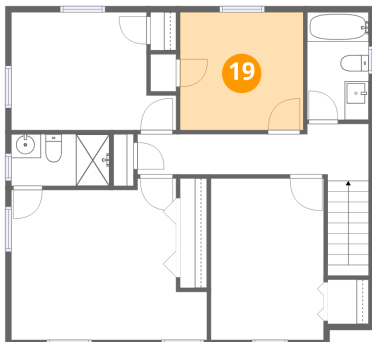
### 18 Floor 4 - Primary Bath



Dimensions: 8'2" x 4'4"  
Area: 35 sq. ft  
Counted as living area: Yes

Heated: Yes  
Finished: Yes  
Enclosed: Yes  
Contiguous: Yes  
Permitted: Yes  
Wet space: Yes  
Addition: No  
Conversion: No

### 19 Floor 4 - Bedroom



Dimensions: 10'3" x 9'9"  
Area: 100 sq. ft  
Counted as living area: Yes

Heated: Yes  
Finished: Yes  
Enclosed: Yes  
Contiguous: Yes  
Permitted: Yes  
Wet space: No  
Addition: No  
Conversion: No