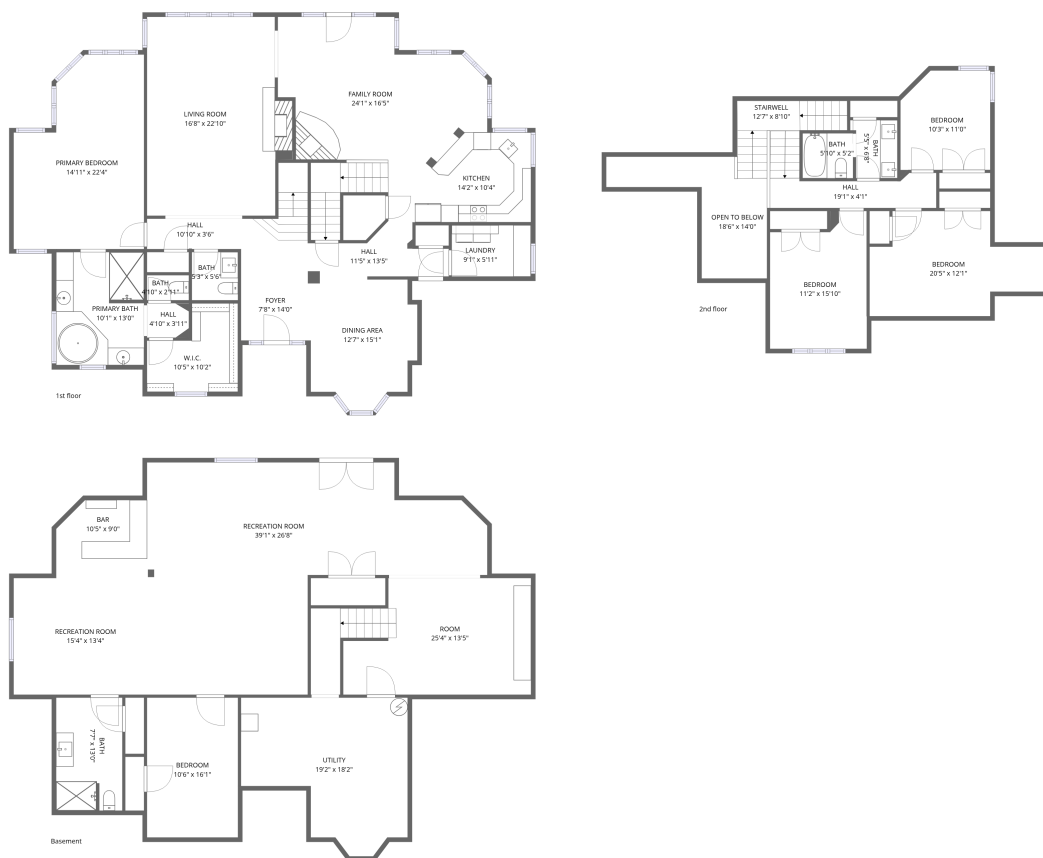


Home data report

7235 S Lodge Rd, Bloomington, IN, US



Total Area: 4358 sq. ft

Basement: 1674 sq. ft, 1st Floor: 1997 sq. ft, 2nd Floor: 687 sq. ft

Excluded: Utility 270 sq. ft, Stairwell 83 sq. ft, Open to below 134 sq. ft, Walls: 301 sq. ft

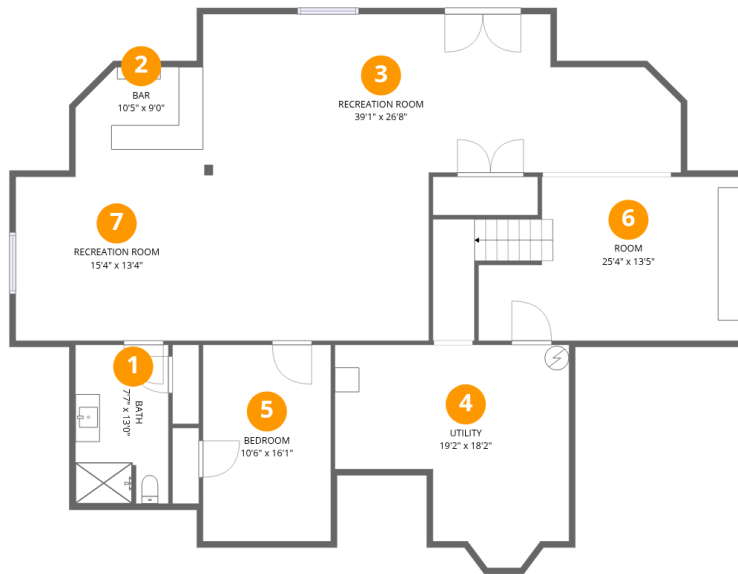
Property summary

 **3** Floors

 **5** Bedrooms

 **3** Bathrooms

 **1** Half baths



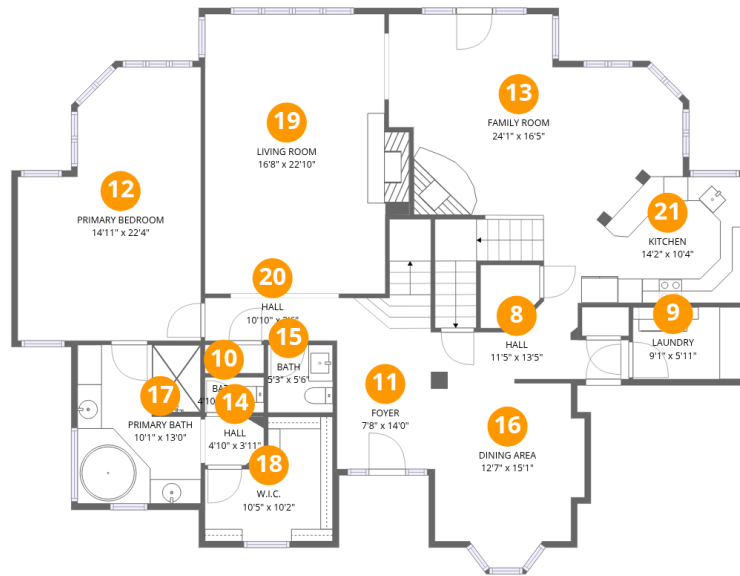
Room dimensions

Floor 1 Below grade

Total: 1674 sqft

Excluded: 270 sqft

#		Dimensions	sqft	Counted as living area
1	Bath	7'7" x 13'0"	99 sq. ft	Yes
2	Bar	10'5" x 9'0"	93 sq. ft	Yes
3	Recreation Room	39'1" x 26'8"	1044 sq. ft	Yes
4	Utility	19'2" x 18'2"	349 sq. ft	No
5	Bedroom	10'6" x 16'1"	168 sq. ft	Yes
6	Room	25'4" x 13'5"	339 sq. ft	Yes
7	Recreation Room	15'4" x 13'4"	205 sq. ft	Yes



Room dimensions

Floor 2

Total:1997sqft

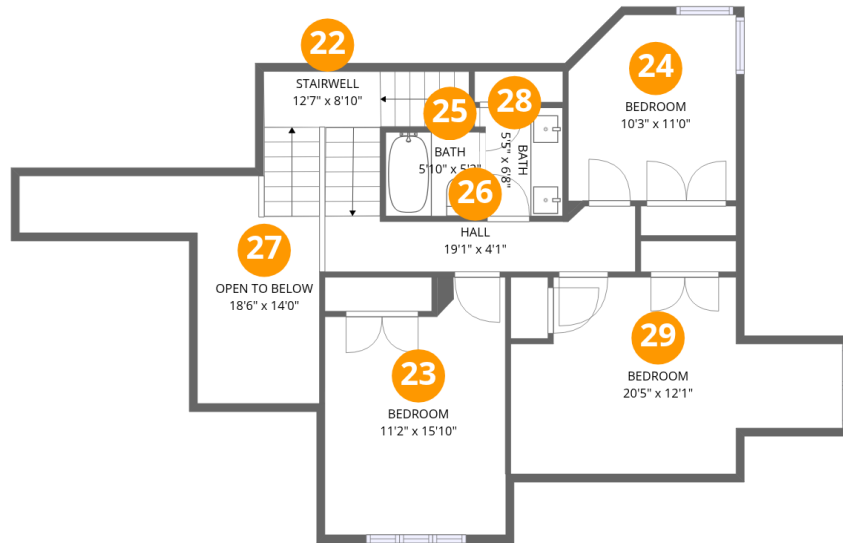
Excluded: 0sqft

#		Dimensions	sqft	Counted as living area
8	Hall	11'5" x 13'5"	153 sq. ft	Yes
9	Laundry	9'1" x 5'11"	54 sq. ft	Yes
10	Bath	4'10" x 2'11"	14 sq. ft	Yes
11	Foyer	7'8" x 14'0"	108 sq. ft	Yes
12	Primary Bedroom	14'11" x 22'4"	333 sq. ft	Yes
13	Family Room	24'1" x 16'5"	395 sq. ft	Yes
14	Hall	4'10" x 3'11"	19 sq. ft	Yes
15	Bath	5'3" x 5'6"	29 sq. ft	Yes
16	Dining Area	12'7" x 15'1"	190 sq. ft	Yes
17	Primary Bath	10'1" x 13'0"	131 sq. ft	Yes
18	W.I.C.	10'5" x 10'2"	106 sq. ft	Yes

Home data report

7235 S Lodge Rd,Bloomington,IN,US

#		Dimensions	sqft	Counted as living area
19	Living Room	16'8" x 22'10"	381 sq. ft	Yes
20	Hall	10'10" x 3'6"	38 sq. ft	Yes
21	Kitchen	14'2" x 10'4"	146 sq. ft	Yes



Room dimensions

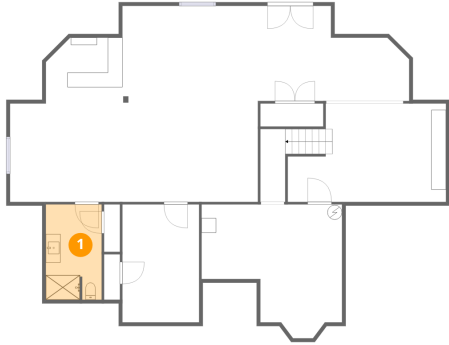
Floor 3

Total:687sqft

Excluded: 217sqft

#		Dimensions	sqft	Counted as living area
22	Stairwell	12'7" x 8'10"	111 sq. ft	No
23	Bedroom	11'2" x 15'10"	176 sq. ft	Yes
24	Bedroom	10'3" x 11'0"	113 sq. ft	Yes
25	Bath	5'10" x 5'2"	30 sq. ft	Yes
26	Hall	19'1" x 4'1"	77 sq. ft	Yes
27	Open To Below	18'6" x 14'0"	259 sq. ft	No
28	Bath	5'5" x 6'8"	36 sq. ft	Yes
29	Bedroom	20'5" x 12'1"	247 sq. ft	Yes

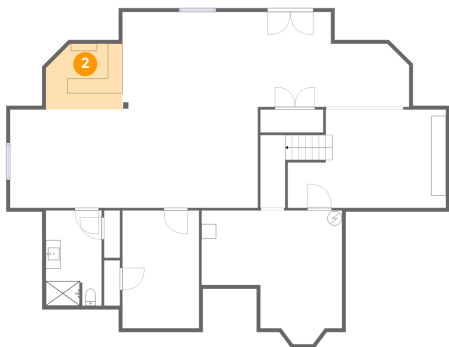
1 Floor 1 - Bath



Dimensions: 7'7" x 13'0"
Area: 99 sq. ft
Counted as living area: Yes

Heated: Yes
Finished: Yes
Enclosed: Yes
Contiguous: Yes
Permitted: Yes
Wet space: Yes
Addition: No
Conversion: No

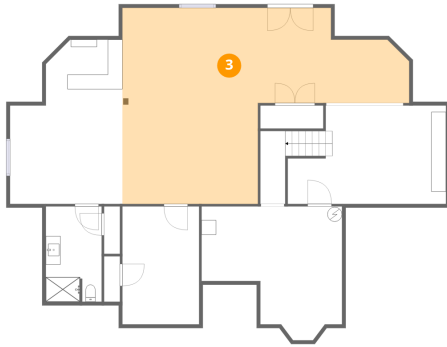
2 Floor 1 - Bar



Dimensions: 10'5" x 9'0"
Area: 93 sq. ft
Counted as living area: Yes

Heated: Yes
Finished: Yes
Enclosed: Yes
Contiguous: Yes
Permitted: Yes
Wet space: No
Addition: No
Conversion: No

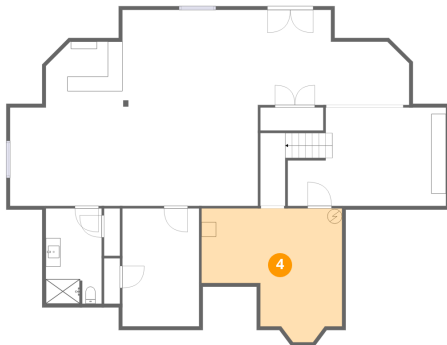
3 Floor 1 - Recreation Room



Dimensions: 39'1" x 26'8"
Area: 1044 sq. ft
Counted as living area: Yes

Heated: Yes
Finished: Yes
Enclosed: Yes
Contiguous: Yes
Permitted: Yes
Wet space: No
Addition: No
Conversion: No

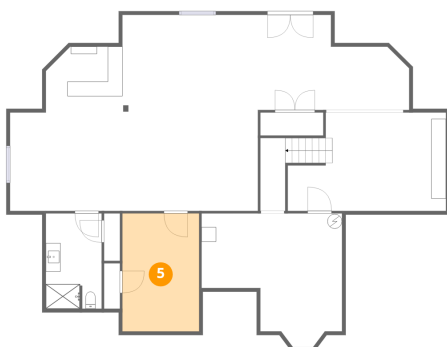
4 Floor 1 - Utility



Dimensions: 19'2" x 18'2"
Area: 349 sq. ft
Counted as living area: No

Heated: Yes
Finished: No
Enclosed: Yes
Contiguous: Yes
Permitted: Yes
Wet space: No
Addition: No
Conversion: No

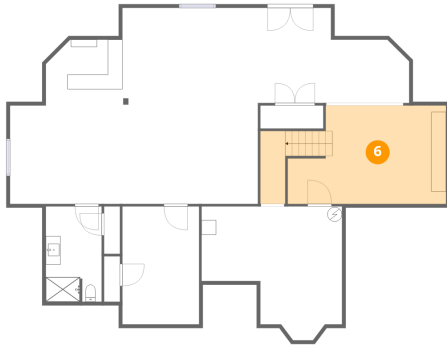
5 Floor 1 - Bedroom



Dimensions: 10'6" x 16'1"
Area: 168 sq. ft
Counted as living area: Yes

Heated: Yes
Finished: Yes
Enclosed: Yes
Contiguous: Yes
Permitted: Yes
Wet space: No
Addition: No
Conversion: No

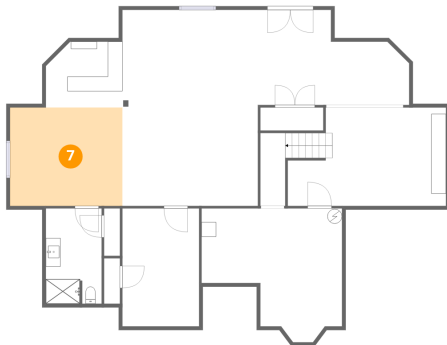
6 Floor 1 - Room



Dimensions: 25'4" x 13'5"
Area: 339 sq. ft
Counted as living area: Yes

Heated: Yes
Finished: Yes
Enclosed: Yes
Contiguous: Yes
Permitted: Yes
Wet space: No
Addition: No
Conversion: No

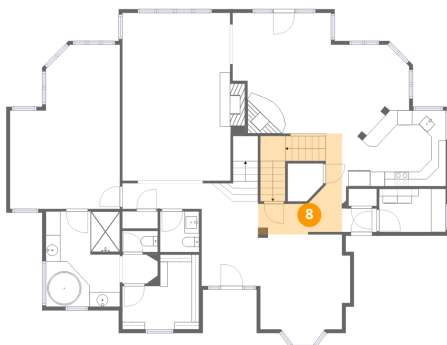
7 Floor 1 - Recreation Room



Dimensions: 15'4" x 13'4"
Area: 205 sq. ft
Counted as living area: Yes

Heated: Yes
Finished: Yes
Enclosed: Yes
Contiguous: Yes
Permitted: Yes
Wet space: No
Addition: No
Conversion: No

8 Floor 2 - Hall



Dimensions: 11'5" x 13'5"
Area: 153 sq. ft
Counted as living area: Yes

Heated: Yes
Finished: Yes
Enclosed: Yes
Contiguous: Yes
Permitted: Yes
Wet space: No
Addition: No
Conversion: No

9 Floor 2 - Laundry



Dimensions: 9'1" x 5'11"
Area: 54 sq. ft
Counted as living area: Yes

Heated: Yes
Finished: Yes
Enclosed: Yes
Contiguous: Yes
Permitted: Yes
Wet space: No
Addition: No
Conversion: No

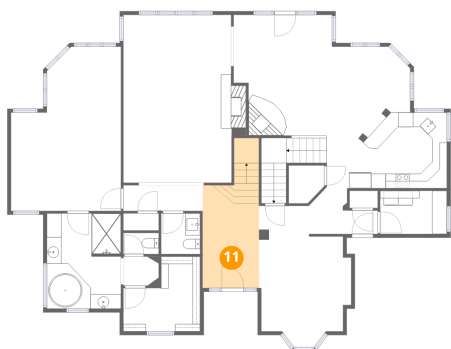
10 Floor 2 - Bath



Dimensions: 4'10" x 2'11"
Area: 14 sq. ft
Counted as living area: Yes

Heated: Yes
Finished: Yes
Enclosed: Yes
Contiguous: Yes
Permitted: Yes
Wet space: No
Addition: No
Conversion: No

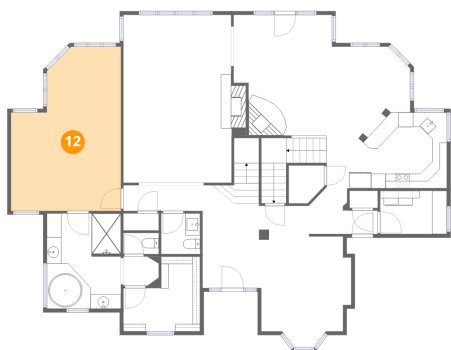
11 Floor 2 - Foyer



Dimensions: 7'8" x 14'0"
Area: 108 sq. ft
Counted as living area: Yes

Heated: Yes
Finished: Yes
Enclosed: Yes
Contiguous: Yes
Permitted: Yes
Wet space: No
Addition: No
Conversion: No

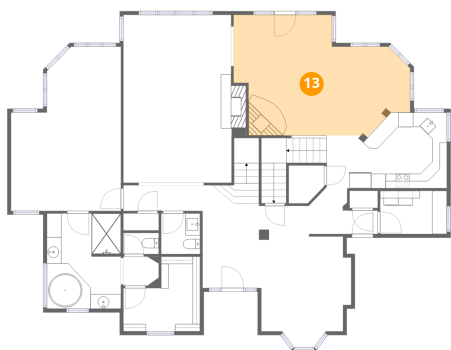
12 Floor 2 - Primary Bedroom



Dimensions: 14'11" x 22'4"
Area: 333 sq. ft
Counted as living area: Yes

Heated: Yes
Finished: Yes
Enclosed: Yes
Contiguous: Yes
Permitted: Yes
Wet space: No
Addition: No
Conversion: No

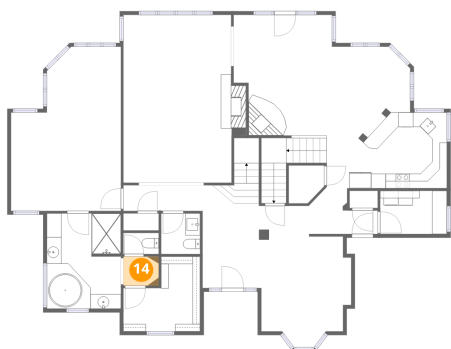
13 Floor 2 - Family Room



Dimensions: 24'1" x 16'5"
Area: 395 sq. ft
Counted as living area: Yes

Heated: Yes
Finished: Yes
Enclosed: Yes
Contiguous: Yes
Permitted: Yes
Wet space: No
Addition: No
Conversion: No

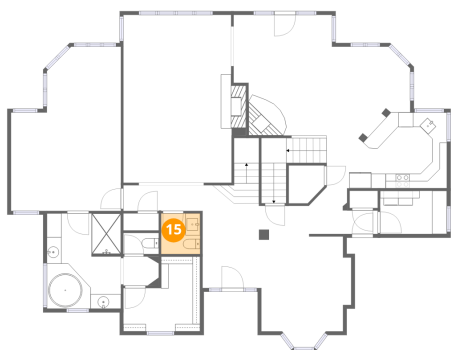
14 Floor 2 - Hall



Dimensions: 4'10" x 3'11"
Area: 19 sq. ft
Counted as living area: Yes

Heated: Yes
Finished: Yes
Enclosed: Yes
Contiguous: Yes
Permitted: Yes
Wet space: No
Addition: No
Conversion: No

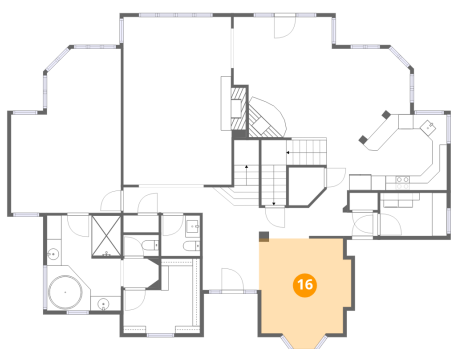
15 Floor 2 - Bath



Dimensions: 5'3" x 5'6"
Area: 29 sq. ft
Counted as living area: Yes

Heated: Yes
Finished: Yes
Enclosed: Yes
Contiguous: Yes
Permitted: Yes
Wet space: Yes
Addition: No
Conversion: No

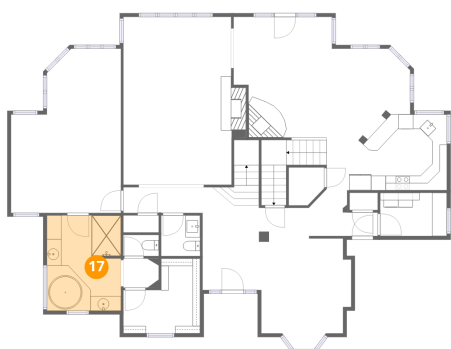
16 Floor 2 - Dining Area



Dimensions: 12'7" x 15'1"
Area: 190 sq. ft
Counted as living area: Yes

Heated: Yes
Finished: Yes
Enclosed: Yes
Contiguous: Yes
Permitted: Yes
Wet space: No
Addition: No
Conversion: No

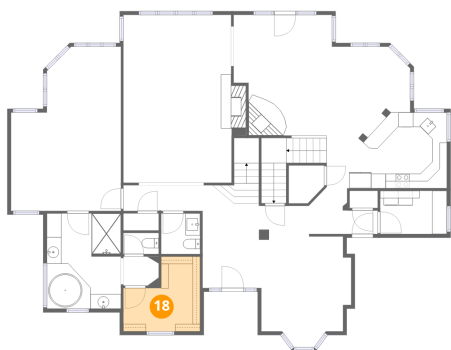
17 Floor 2 - Primary Bath



Dimensions: 10'1" x 13'0"
Area: 131 sq. ft
Counted as living area: Yes

Heated: Yes
Finished: Yes
Enclosed: Yes
Contiguous: Yes
Permitted: Yes
Wet space: Yes
Addition: No
Conversion: No

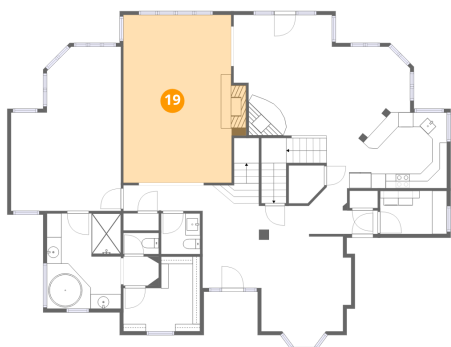
18 Floor 2 - W.I.C.



Dimensions: 10'5" x 10'2"
Area: 106 sq. ft
Counted as living area: Yes

Heated: Yes
Finished: Yes
Enclosed: Yes
Contiguous: Yes
Permitted: Yes
Wet space: No
Addition: No
Conversion: No

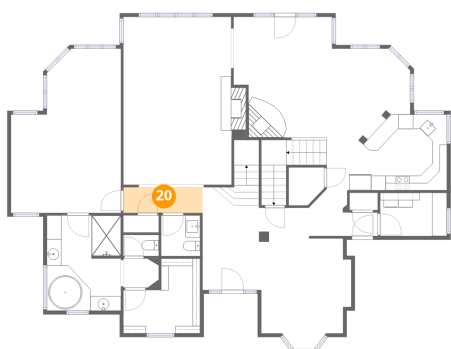
19 Floor 2 - Living Room



Dimensions: 16'8" x 22'10"
Area: 381 sq. ft
Counted as living area: Yes

Heated: Yes
Finished: Yes
Enclosed: Yes
Contiguous: Yes
Permitted: Yes
Wet space: No
Addition: No
Conversion: No

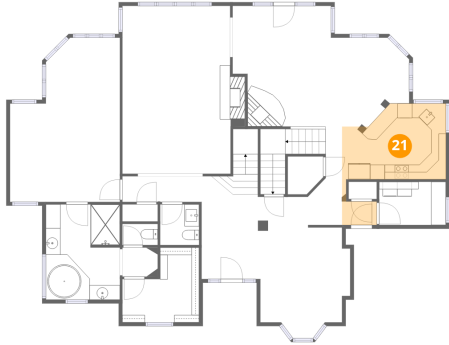
20 Floor 2 - Hall



Dimensions: 10'10" x 3'6"
Area: 38 sq. ft
Counted as living area: Yes

Heated: Yes
Finished: Yes
Enclosed: Yes
Contiguous: Yes
Permitted: Yes
Wet space: No
Addition: No
Conversion: No

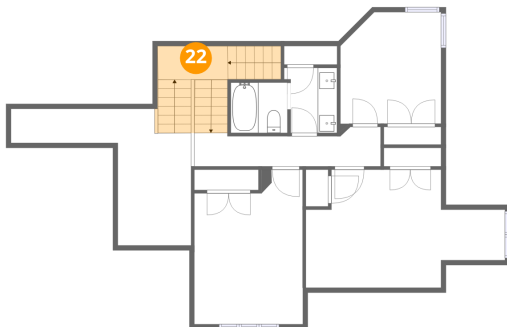
21 Floor 2 - Kitchen



Dimensions: 14'2" x 10'4"
Area: 146 sq. ft
Counted as living area: Yes

Heated: Yes
Finished: Yes
Enclosed: Yes
Contiguous: Yes
Permitted: Yes
Wet space: No
Addition: No
Conversion: No

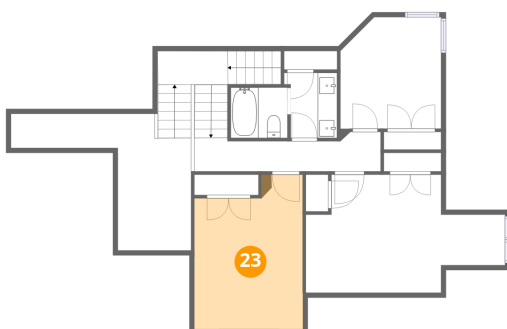
22 Floor 3 - Stairwell



Dimensions: 12'7" x 8'10"
Area: 111 sq. ft
Counted as living area: No

Heated: No
Finished: No
Enclosed: No
Contiguous: Yes
Permitted: No
Wet space: No
Addition: No
Conversion: No

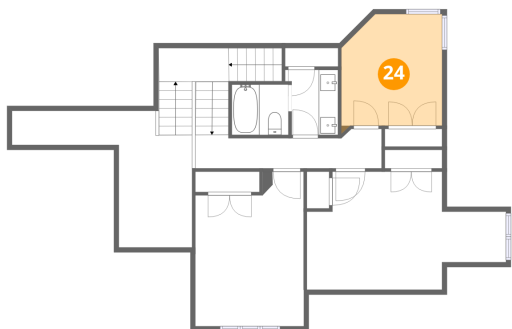
23 Floor 3 - Bedroom



Dimensions: 11'2" x 15'10"
Area: 176 sq. ft
Counted as living area: Yes

Heated: Yes
Finished: Yes
Enclosed: Yes
Contiguous: Yes
Permitted: Yes
Wet space: No
Addition: No
Conversion: No

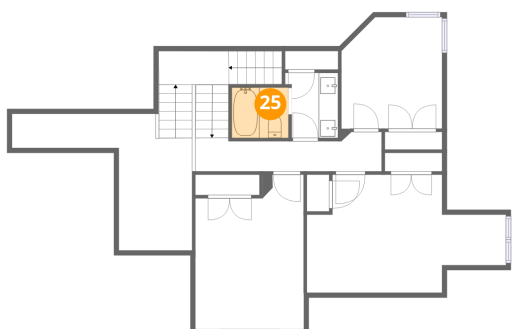
24 Floor 3 - Bedroom



Dimensions: 10'3" x 11'0"
Area: 113 sq. ft
Counted as living area: Yes

Heated: Yes
Finished: Yes
Enclosed: Yes
Contiguous: Yes
Permitted: Yes
Wet space: No
Addition: No
Conversion: No

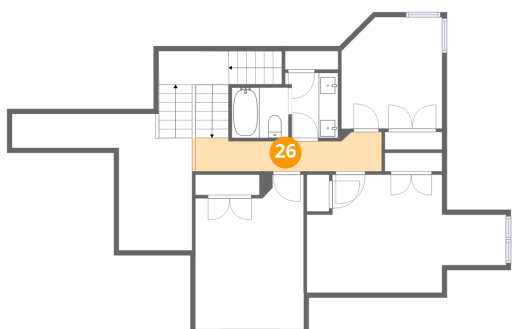
25 Floor 3 - Bath



Dimensions: 5'10" x 5'2"
Area: 30 sq. ft
Counted as living area: Yes

Heated: Yes
Finished: Yes
Enclosed: Yes
Contiguous: Yes
Permitted: Yes
Wet space: Yes
Addition: No
Conversion: No

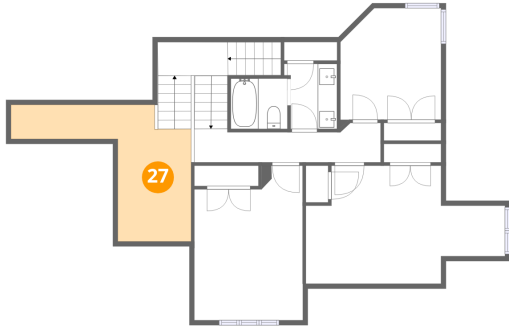
26 Floor 3 - Hall



Dimensions: 19'1" x 4'1"
Area: 77 sq. ft
Counted as living area: Yes

Heated: Yes
Finished: Yes
Enclosed: Yes
Contiguous: Yes
Permitted: Yes
Wet space: No
Addition: No
Conversion: No

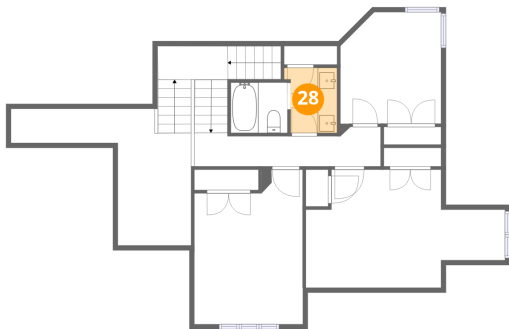
27 Floor 3 - Open To Below



Dimensions: 18'6" x 14'0"
Area: 259 sq. ft
Counted as living area: No

Heated: No
Finished: No
Enclosed: No
Contiguous: Yes
Permitted: No
Wet space: No
Addition: No
Conversion: No

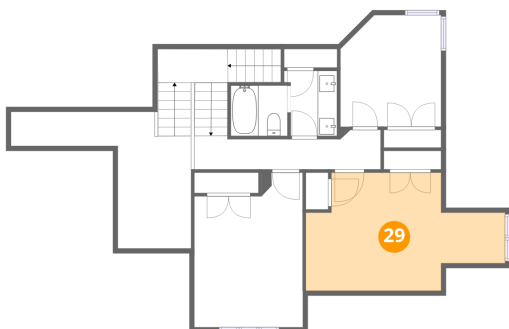
28 Floor 3 - Bath



Dimensions: 5'5" x 6'8"
Area: 36 sq. ft
Counted as living area: Yes

Heated: Yes
Finished: Yes
Enclosed: Yes
Contiguous: Yes
Permitted: Yes
Wet space: Yes
Addition: No
Conversion: No

29 Floor 3 - Bedroom



Dimensions: 20'5" x 12'1"
Area: 247 sq. ft
Counted as living area: Yes

Heated: Yes
Finished: Yes
Enclosed: Yes
Contiguous: Yes
Permitted: Yes
Wet space: No
Addition: No
Conversion: No