

# Home data report

## 8300 Fairmount Dr, Unit Y102, Denver, CO, US, Unit Y102




**Total Area: 1751 sq. ft**

1st Floor: 954 sq. ft, 2nd Floor: 797 sq. ft

Excluded: Patio 119 sq. ft, Garage 374 sq. ft, Open to below 356 sq. ft, Walls: 183 sq. ft

### Property summary

 **2** Floors

 **2** Bedrooms

 **2** Bathrooms

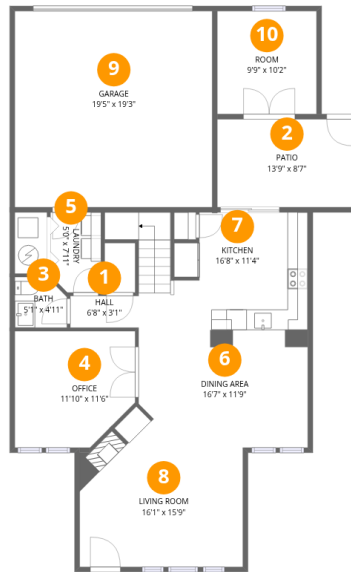
Home data report

**8300 Fairmount Dr, Unit Y102, Denver, CO, US, Unit Y102**

 **1**  
Half baths

 **1**  
Garages

# 8300 Fairmount Dr, Unit Y102, Denver, CO, US, Unit Y102



## Room dimensions

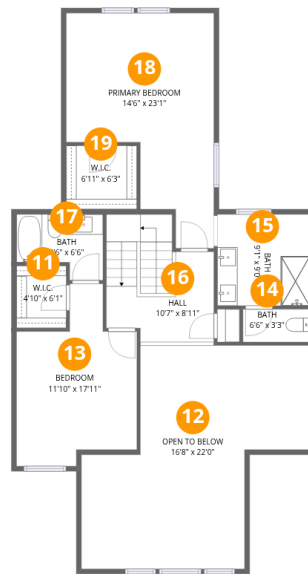
Floor 1

Total: 954 sqft

Excluded: 493 sqft

#		Dimensions	sqft	Counted as living area
1	Hall	6'8" x 3'1"	21 sq. ft	Yes
2	Patio	13'9" x 8'7"	118 sq. ft	No
3	Bath	5'1" x 4'11"	25 sq. ft	Yes
4	Office	11'10" x 11'6"	136 sq. ft	Yes
5	Laundry	5'0" x 7'11"	39 sq. ft	Yes
6	Dining Area	16'7" x 11'9"	195 sq. ft	Yes
7	Kitchen	16'8" x 11'4"	189 sq. ft	Yes
8	Living Room	16'1" x 15'9"	253 sq. ft	Yes
9	Garage	19'5" x 19'3"	374 sq. ft	No
10	Room	9'9" x 10'2"	99 sq. ft	Yes

# 8300 Fairmount Dr, Unit Y102, Denver, CO, US, Unit Y102



## Room dimensions

Floor 2

Total: 797 sqft

Excluded: 356 sqft

#		Dimensions	sqft	Counted as living area
11	W.I.C.	4'10" x 6'1"	30 sq. ft	Yes
12	Open To Below	16'8" x 22'0"	365 sq. ft	No
13	Bedroom	11'10" x 17'11"	212 sq. ft	Yes
14	Bath	6'6" x 3'3"	21 sq. ft	Yes
15	Bath	9'1" x 9'0"	82 sq. ft	Yes
16	Hall	10'7" x 8'11"	94 sq. ft	Yes
17	Bath	8'6" x 6'6"	55 sq. ft	Yes
18	Primary Bedroom	14'6" x 23'1"	336 sq. ft	Yes
19	W.I.C.	6'11" x 6'3"	43 sq. ft	Yes

## 1 Floor 1 - Hall



Dimensions: 6'8" x 3'1"  
Area: 21 sq. ft  
Counted as living area: Yes

Heated: Yes  
Finished: Yes  
Enclosed: Yes  
Contiguous: Yes  
Permitted: Yes  
Wet space: No  
Addition: No  
Conversion: No

## 2 Floor 1 - Patio



Dimensions: 13'9" x 8'7"  
Area: 118 sq. ft  
Counted as living area: No

Heated: No  
Finished: No  
Enclosed: No  
Contiguous: Yes  
Permitted: Yes  
Wet space: No  
Addition: No  
Conversion: No

### 3 Floor 1 - Bath



Dimensions: 5'1" x 4'11"  
Area: 25 sq. ft  
Counted as living area: Yes

Heated: Yes  
Finished: Yes  
Enclosed: Yes  
Contiguous: Yes  
Permitted: Yes  
Wet space: Yes  
Addition: No  
Conversion: No

### 4 Floor 1 - Office



Dimensions: 11'10" x 11'6"  
Area: 136 sq. ft  
Counted as living area: Yes

Heated: Yes  
Finished: Yes  
Enclosed: Yes  
Contiguous: Yes  
Permitted: Yes  
Wet space: No  
Addition: No  
Conversion: No

### 5 Floor 1 - Laundry



Dimensions: 5'0" x 7'11"  
Area: 39 sq. ft  
Counted as living area: Yes

Heated: Yes  
Finished: Yes  
Enclosed: Yes  
Contiguous: Yes  
Permitted: Yes  
Wet space: No  
Addition: No  
Conversion: No

### 6 Floor 1 - Dining Area



Dimensions: 16'7" x 11'9"  
Area: 195 sq. ft  
Counted as living area: Yes

Heated: Yes  
Finished: Yes  
Enclosed: Yes  
Contiguous: Yes  
Permitted: Yes  
Wet space: No  
Addition: No  
Conversion: No

### 7 Floor 1 - Kitchen



Dimensions: 16'8" x 11'4"  
Area: 189 sq. ft  
Counted as living area: Yes

Heated: Yes  
Finished: Yes  
Enclosed: Yes  
Contiguous: Yes  
Permitted: Yes  
Wet space: No  
Addition: No  
Conversion: No

### 8 Floor 1 - Living Room



Dimensions: 16'1" x 15'9"  
Area: 253 sq. ft  
Counted as living area: Yes

Heated: Yes  
Finished: Yes  
Enclosed: Yes  
Contiguous: Yes  
Permitted: Yes  
Wet space: No  
Addition: No  
Conversion: No

### 9 Floor 1 - Garage



Dimensions: 19'5" x 19'3"  
Area: 374 sq. ft  
Counted as living area: No

Heated: No  
Finished: No  
Enclosed: Yes  
Contiguous: Yes  
Permitted: Yes  
Wet space: No  
Addition: No  
Conversion: No

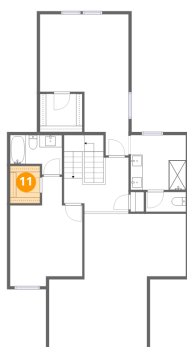
### 10 Floor 1 - Room



Dimensions: 9'9" x 10'2"  
Area: 99 sq. ft  
Counted as living area: Yes

Heated: Yes  
Finished: Yes  
Enclosed: Yes  
Contiguous: Yes  
Permitted: Yes  
Wet space: No  
Addition: No  
Conversion: No

### 11 Floor 2 - W.I.C.



Dimensions: 4'10" x 6'1"  
Area: 30 sq. ft  
Counted as living area: Yes

Heated: Yes  
Finished: Yes  
Enclosed: Yes  
Contiguous: Yes  
Permitted: Yes  
Wet space: No  
Addition: No  
Conversion: No

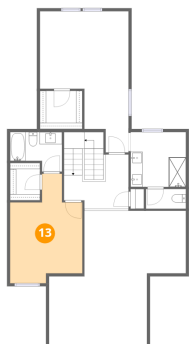
## 12 Floor 2 - Open To Below



Dimensions: 16'8" x 22'0"  
Area: 365 sq. ft  
Counted as living area: No

Heated: No  
Finished: No  
Enclosed: No  
Contiguous: Yes  
Permitted: No  
Wet space: No  
Addition: No  
Conversion: No

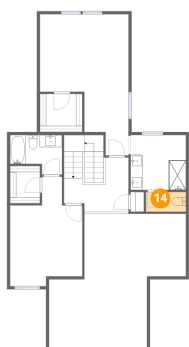
## 13 Floor 2 - Bedroom



Dimensions: 11'10" x 17'11"  
Area: 212 sq. ft  
Counted as living area: Yes

Heated: Yes  
Finished: Yes  
Enclosed: Yes  
Contiguous: Yes  
Permitted: Yes  
Wet space: No  
Addition: No  
Conversion: No

## 14 Floor 2 - Bath



Dimensions: 6'6" x 3'3"  
Area: 21 sq. ft  
Counted as living area: Yes

Heated: Yes  
Finished: Yes  
Enclosed: Yes  
Contiguous: Yes  
Permitted: Yes  
Wet space: Yes  
Addition: No  
Conversion: No

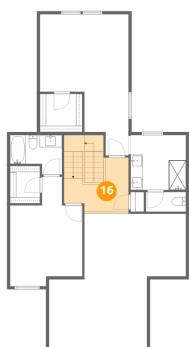
**15** Floor 2 - Bath



Dimensions: 9'1" x 9'0"  
Area: 82 sq. ft  
Counted as living area: Yes

Heated: Yes  
Finished: Yes  
Enclosed: Yes  
Contiguous: Yes  
Permitted: Yes  
Wet space: Yes  
Addition: No  
Conversion: No

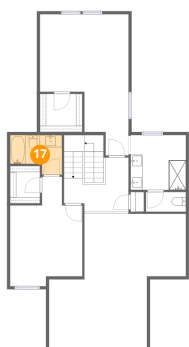
**16** Floor 2 - Hall



Dimensions: 10'7" x 8'11"  
Area: 94 sq. ft  
Counted as living area: Yes

Heated: Yes  
Finished: Yes  
Enclosed: Yes  
Contiguous: Yes  
Permitted: Yes  
Wet space: No  
Addition: No  
Conversion: No

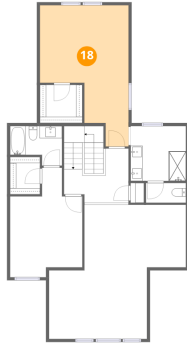
**17** Floor 2 - Bath



Dimensions: 8'6" x 6'6"  
Area: 55 sq. ft  
Counted as living area: Yes

Heated: Yes  
Finished: Yes  
Enclosed: Yes  
Contiguous: Yes  
Permitted: Yes  
Wet space: Yes  
Addition: No  
Conversion: No

## 18 Floor 2 - Primary Bedroom



Dimensions: 14'6" x 23'1"  
Area: 336 sq. ft  
Counted as living area: Yes

Heated: Yes  
Finished: Yes  
Enclosed: Yes  
Contiguous: Yes  
Permitted: Yes  
Wet space: No  
Addition: No  
Conversion: No

## 19 Floor 2 - W.I.C.



Dimensions: 6'11" x 6'3"  
Area: 43 sq. ft  
Counted as living area: Yes

Heated: Yes  
Finished: Yes  
Enclosed: Yes  
Contiguous: Yes  
Permitted: Yes  
Wet space: No  
Addition: No  
Conversion: No