

Home data report

8214 Winterwood Trail, Roanoke, Roanoke County, Virginia,
United States, 24018



Total Area: 2566 sq. ft

Basement: 0 sq. ft, 1st Floor: 1893 sq. ft, 2nd Floor: 673 sq. ft

Excluded: Utility 225 sq. ft, Garage 1025 sq. ft, Basement 957 sq. ft, Fireplace 21 sq. ft,
Porch 59 sq. ft, Deck 348 sq. ft, Open to below 608 sq. ft, Walls: 339 sq. ft

Property summary

 **3** Floors

 **3** Bedrooms

 **2** Bathrooms

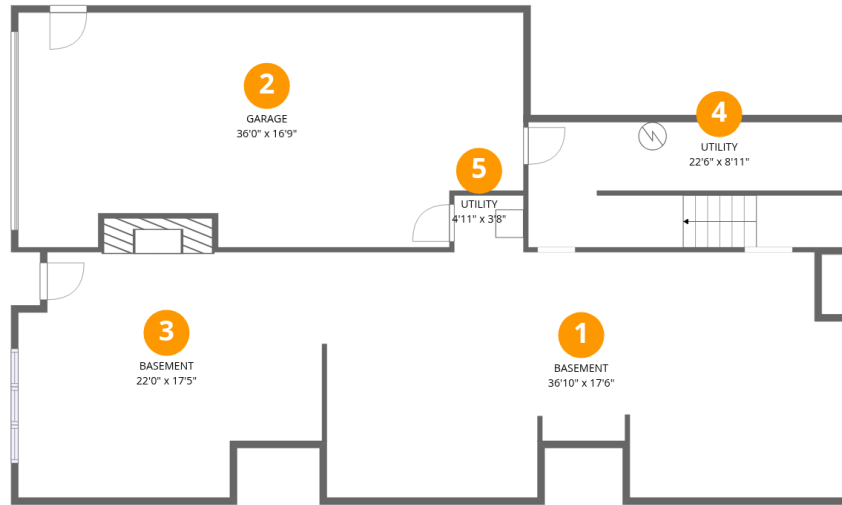
Home data report

**8214 Winterwood Trail, Roanoke, Roanoke County, Virginia,
United States, 24018**

 **1**
Half baths

 **2**
Garages

8214 Winterwood Trail, Roanoke, Roanoke County, Virginia, United States, 24018



Room dimensions

Floor 1 Below grade

Total:0sqft

Excluded: 1763sqft

#		Dimensions	sqft	Counted as living area
1	Basement	36'10" x 17'6"	606 sq. ft	No
2	Garage	36'0" x 16'9"	560 sq. ft	No
3	Basement	22'0" x 17'5"	364 sq. ft	No
4	Utility	22'6" x 8'11"	195 sq. ft	No
5	Utility	4'11" x 3'8"	18 sq. ft	No

Home data report

8214 Winterwood Trail, Roanoke, Roanoke County, Virginia, United States, 24018



Room dimensions

Floor 2

Total:1893sqft Excluded: 872sqft

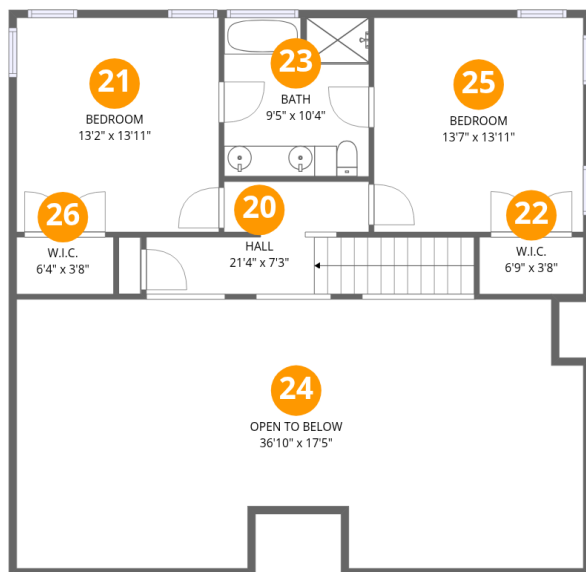
#		Dimensions	sqft	Counted as living area
6	Kitchen	16'10" x 20'0"	260 sq. ft	Yes
7	Bath	8'10" x 10'6"	92 sq. ft	Yes
8	Deck	27'7" x 16'11"	348 sq. ft	No
9	Garage	23'2" x 21'2"	465 sq. ft	No
10	Hall	7'10" x 6'2"	41 sq. ft	Yes
11	Family Room	21'8" x 17'6"	343 sq. ft	Yes
12	W.I.C.	8'10" x 7'1"	63 sq. ft	Yes
13	Bath	5'2" x 6'2"	32 sq. ft	Yes
14	Porch	8'2" x 9'3"	59 sq. ft	No
15	Laundry	7'2" x 6'2"	44 sq. ft	Yes
16	Primary Bedroom	15'6" x 18'3"	281 sq. ft	Yes

Home data report

**8214 Winterwood Trail, Roanoke, Roanoke County, Virginia,
United States, 24018**

#		Dimensions	sqft	Counted as living area
17	Living Room	15'3" x 21'6"	308 sq. ft	Yes
18	Foyer	6'3" x 13'5"	83 sq. ft	Yes
19	Dining Area	15'0" x 17'6"	263 sq. ft	Yes

8214 Winterwood Trail, Roanoke, Roanoke County, Virginia, United States, 24018



Room dimensions

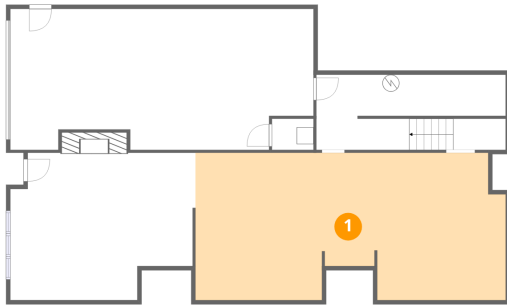
Floor 3

Total:673sqft Excluded: 608sqft

#		Dimensions	sqft	Counted as living area
20	Hall	21'4" x 7'3"	118 sq. ft	Yes
21	Bedroom	13'2" x 13'11"	183 sq. ft	Yes
22	W.I.C.	6'9" x 3'8"	25 sq. ft	Yes
23	Bath	9'5" x 10'4"	96 sq. ft	Yes
24	Open To Below	36'10" x 17'5"	608 sq. ft	No
25	Bedroom	13'7" x 13'11"	189 sq. ft	Yes
26	W.I.C.	6'4" x 3'8"	23 sq. ft	Yes

8214 Winterwood Trail, Roanoke, Roanoke County, Virginia,
United States, 24018

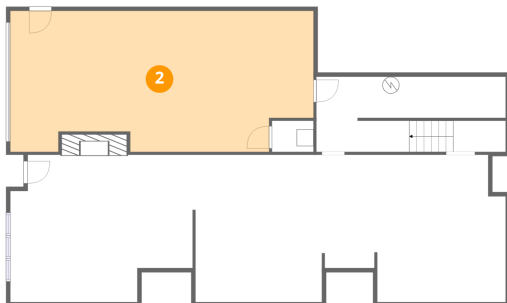
1 Floor 1 - Basement



Dimensions: 36'10" x 17'6"
Area: 606 sq. ft
Counted as living area: No

Heated: Yes
Finished: No
Enclosed: Yes
Contiguous: Yes
Permitted: Yes
Wet space: No
Addition: No
Conversion: No

2 Floor 1 - Garage

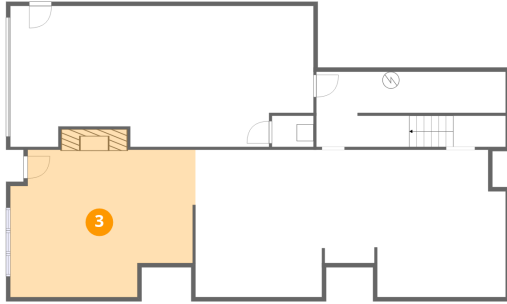


Dimensions: 36'0" x 16'9"
Area: 560 sq. ft
Counted as living area: No

Heated: No
Finished: No
Enclosed: Yes
Contiguous: Yes
Permitted: Yes
Wet space: No
Addition: No
Conversion: No

8214 Winterwood Trail, Roanoke, Roanoke County, Virginia,
United States, 24018

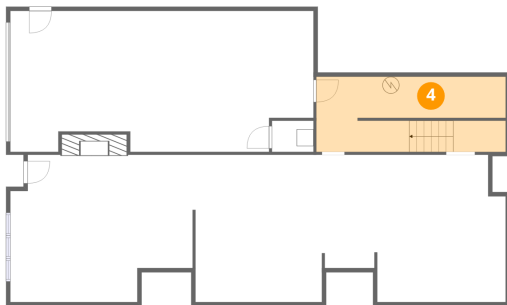
3 Floor 1 - Basement



Dimensions: 22'0" x 17'5"
Area: 364 sq. ft
Counted as living area: No

Heated: Yes
Finished: No
Enclosed: Yes
Contiguous: Yes
Permitted: Yes
Wet space: No
Addition: No
Conversion: No

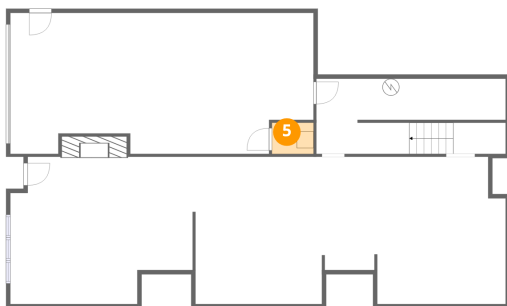
4 Floor 1 - Utility



Dimensions: 22'6" x 8'11"
Area: 195 sq. ft
Counted as living area: No

Heated: Yes
Finished: No
Enclosed: Yes
Contiguous: Yes
Permitted: Yes
Wet space: No
Addition: No
Conversion: No

5 Floor 1 - Utility



Dimensions: 4'11" x 3'8"
Area: 18 sq. ft
Counted as living area: No

Heated: Yes
Finished: No
Enclosed: Yes
Contiguous: Yes
Permitted: Yes
Wet space: No
Addition: No
Conversion: No

8214 Winterwood Trail, Roanoke, Roanoke County, Virginia,
United States, 24018

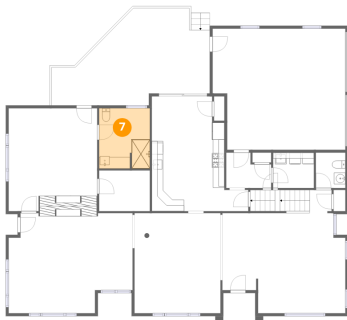
6 Floor 2 - Kitchen



Dimensions: 16'10" x 20'0"
Area: 260 sq. ft
Counted as living area: Yes

Heated: Yes
Finished: Yes
Enclosed: Yes
Contiguous: Yes
Permitted: Yes
Wet space: No
Addition: No
Conversion: No

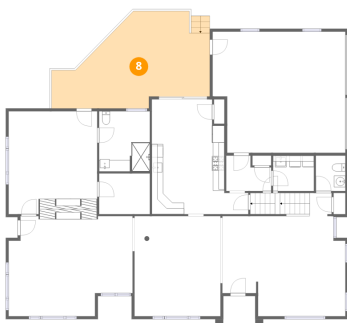
7 Floor 2 - Bath



Dimensions: 8'10" x 10'6"
Area: 92 sq. ft
Counted as living area: Yes

Heated: Yes
Finished: Yes
Enclosed: Yes
Contiguous: Yes
Permitted: Yes
Wet space: Yes
Addition: No
Conversion: No

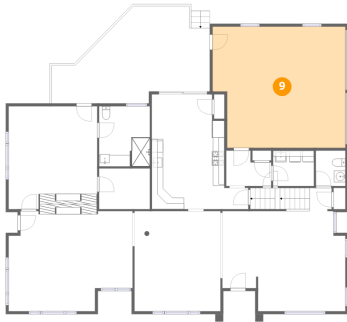
8 Floor 2 - Deck



Dimensions: 27'7" x 16'11"
Area: 348 sq. ft
Counted as living area: No

Heated: No
Finished: No
Enclosed: No
Contiguous: Yes
Permitted: Yes
Wet space: No
Addition: No
Conversion: No

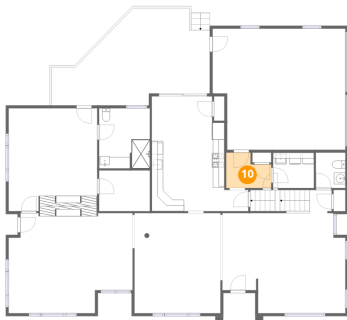
9 Floor 2 - Garage



Dimensions: 23'2" x 21'2"
Area: 465 sq. ft
Counted as living area: No

Heated: No
Finished: No
Enclosed: Yes
Contiguous: Yes
Permitted: Yes
Wet space: No
Addition: No
Conversion: No

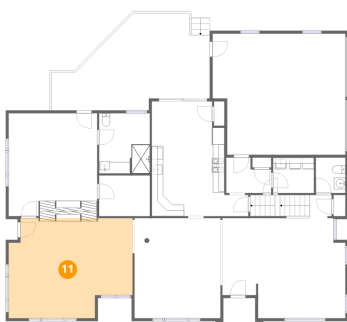
10 Floor 2 - Hall



Dimensions: 7'10" x 6'2"
Area: 41 sq. ft
Counted as living area: Yes

Heated: Yes
Finished: Yes
Enclosed: Yes
Contiguous: Yes
Permitted: Yes
Wet space: No
Addition: No
Conversion: No

11 Floor 2 - Family Room



Dimensions: 21'8" x 17'6"
Area: 343 sq. ft
Counted as living area: Yes

Heated: Yes
Finished: Yes
Enclosed: Yes
Contiguous: Yes
Permitted: Yes
Wet space: No
Addition: No
Conversion: No

8214 Winterwood Trail, Roanoke, Roanoke County, Virginia,
United States, 24018

12 Floor 2 - W.I.C.



Dimensions: 8'10" x 7'1"
Area: 63 sq. ft
Counted as living area: Yes

Heated: Yes
Finished: Yes
Enclosed: Yes
Contiguous: Yes
Permitted: Yes
Wet space: No
Addition: No
Conversion: No

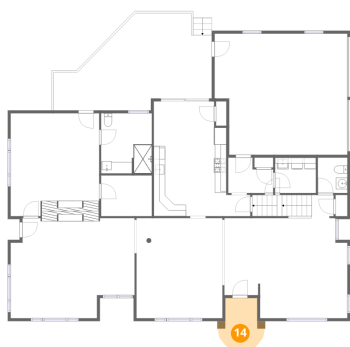
13 Floor 2 - Bath



Dimensions: 5'2" x 6'2"
Area: 32 sq. ft
Counted as living area: Yes

Heated: Yes
Finished: Yes
Enclosed: Yes
Contiguous: Yes
Permitted: Yes
Wet space: Yes
Addition: No
Conversion: No

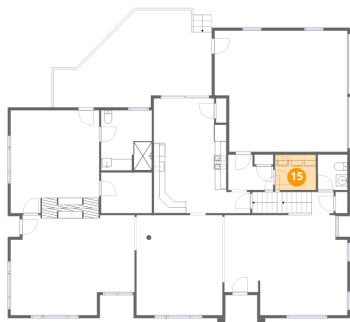
14 Floor 2 - Porch



Dimensions: 8'2" x 9'3"
Area: 59 sq. ft
Counted as living area: No

Heated: No
Finished: No
Enclosed: No
Contiguous: Yes
Permitted: Yes
Wet space: No
Addition: No
Conversion: No

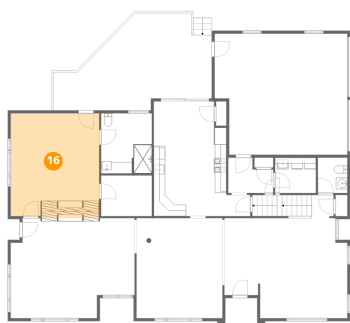
15 Floor 2 - Laundry



Dimensions: 7'2" x 6'2"
Area: 44 sq. ft
Counted as living area: Yes

Heated: Yes
Finished: Yes
Enclosed: Yes
Contiguous: Yes
Permitted: Yes
Wet space: No
Addition: No
Conversion: No

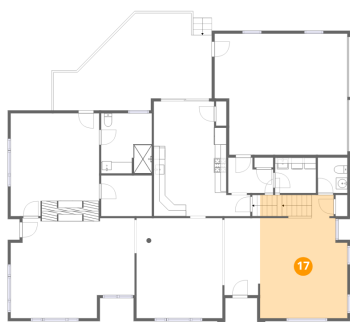
16 Floor 2 - Primary Bedroom



Dimensions: 15'6" x 18'3"
Area: 281 sq. ft
Counted as living area: Yes

Heated: Yes
Finished: Yes
Enclosed: Yes
Contiguous: Yes
Permitted: Yes
Wet space: No
Addition: No
Conversion: No

17 Floor 2 - Living Room

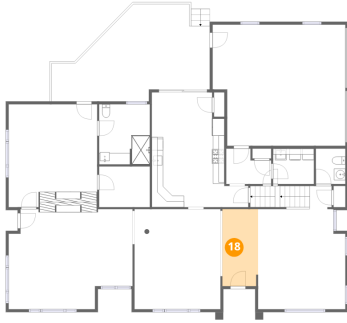


Dimensions: 15'3" x 21'6"
Area: 308 sq. ft
Counted as living area: Yes

Heated: Yes
Finished: Yes
Enclosed: Yes
Contiguous: Yes
Permitted: Yes
Wet space: No
Addition: No
Conversion: No

8214 Winterwood Trail, Roanoke, Roanoke County, Virginia,
United States, 24018

18 Floor 2 - Foyer



Dimensions: 6'3" x 13'5"
Area: 83 sq. ft
Counted as living area: Yes

Heated: Yes
Finished: Yes
Enclosed: Yes
Contiguous: Yes
Permitted: Yes
Wet space: No
Addition: No
Conversion: No

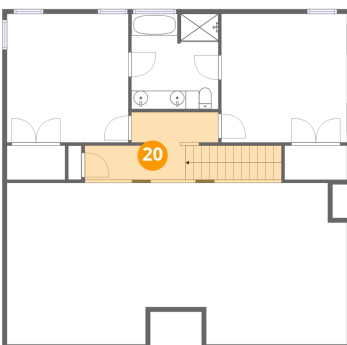
19 Floor 2 - Dining Area



Dimensions: 15'0" x 17'6"
Area: 263 sq. ft
Counted as living area: Yes

Heated: Yes
Finished: Yes
Enclosed: Yes
Contiguous: Yes
Permitted: Yes
Wet space: No
Addition: No
Conversion: No

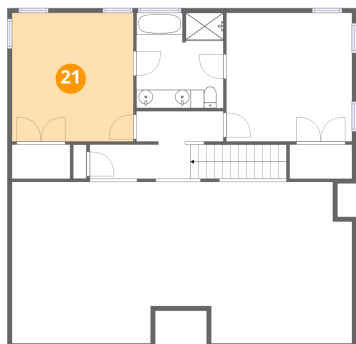
20 Floor 3 - Hall



Dimensions: 21'4" x 7'3"
Area: 118 sq. ft
Counted as living area: Yes

Heated: Yes
Finished: Yes
Enclosed: Yes
Contiguous: Yes
Permitted: Yes
Wet space: No
Addition: No
Conversion: No

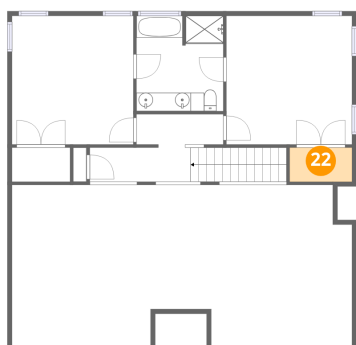
21 Floor 3 - Bedroom



Dimensions: 13'2" x 13'11"
Area: 183 sq. ft
Counted as living area: Yes

Heated: Yes
Finished: Yes
Enclosed: Yes
Contiguous: Yes
Permitted: Yes
Wet space: No
Addition: No
Conversion: No

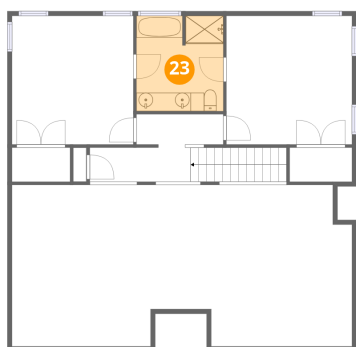
22 Floor 3 - W.I.C.



Dimensions: 6'9" x 3'8"
Area: 25 sq. ft
Counted as living area: Yes

Heated: Yes
Finished: Yes
Enclosed: Yes
Contiguous: Yes
Permitted: Yes
Wet space: No
Addition: No
Conversion: No

23 Floor 3 - Bath

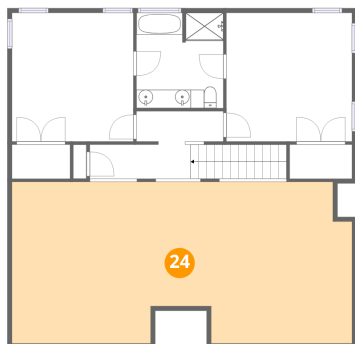


Dimensions: 9'5" x 10'4"
Area: 96 sq. ft
Counted as living area: Yes

Heated: Yes
Finished: Yes
Enclosed: Yes
Contiguous: Yes
Permitted: Yes
Wet space: Yes
Addition: No
Conversion: No

8214 Winterwood Trail, Roanoke, Roanoke County, Virginia,
United States, 24018

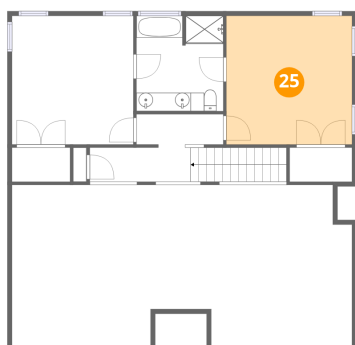
24 Floor 3 - Open To Below



Dimensions: 36'10" x 17'5"
Area: 608 sq. ft
Counted as living area: No

Heated: No
Finished: No
Enclosed: No
Contiguous: Yes
Permitted: No
Wet space: No
Addition: No
Conversion: No

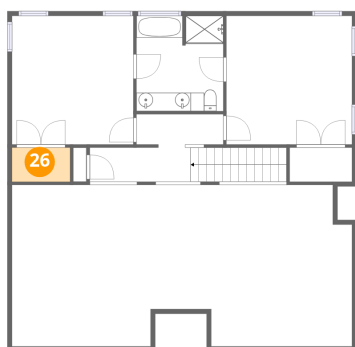
25 Floor 3 - Bedroom



Dimensions: 13'7" x 13'11"
Area: 189 sq. ft
Counted as living area: Yes

Heated: Yes
Finished: Yes
Enclosed: Yes
Contiguous: Yes
Permitted: Yes
Wet space: No
Addition: No
Conversion: No

26 Floor 3 - W.I.C.



Dimensions: 6'4" x 3'8"
Area: 23 sq. ft
Counted as living area: Yes

Heated: Yes
Finished: Yes
Enclosed: Yes
Contiguous: Yes
Permitted: Yes
Wet space: No
Addition: No
Conversion: No