

Home data report

3457 N Harvest Moon Wy, Eagle, ID, US




Total Area: 3902 sq. ft

1st Floor: 2689 sq. ft, 2nd Floor: 1213 sq. ft

Excluded: Garage 1060 sq. ft, Undefined 63 sq. ft, Terrace 546 sq. ft, Balcony 171 sq. ft, Open to below 66 sq. ft, Walls: 336 sq. ft

Property summary

 **2** Floors

 **4** Bedrooms

 **4** Bathrooms

Home data report

3457 N Harvest Moon Wy,Eagle,ID,US

 **1**
Half baths

 **2**
Garages

Home data report

3457 N Harvest Moon Wy,Eagle,ID,US



Room dimensions

Floor 1

Total:2689sqft

Excluded: 1123sqft

#		Dimensions	sqft	Counted as living area
1	Hall	6'5" x 11'4"	73 sq. ft	Yes
2	Bath	6'11" x 3'5"	24 sq. ft	Yes
3	Office	12'0" x 11'11"	143 sq. ft	Yes
4	Bath	9'10" x 13'0"	128 sq. ft	Yes
5	Bath	6'0" x 3'3"	19 sq. ft	Yes
6	Hall	6'5" x 11'4"	73 sq. ft	Yes
7	W.I.C.	10'7" x 8'7"	91 sq. ft	Yes
8	Living Room	25'6" x 30'0"	765 sq. ft	Yes
9	W.I.C.	10'7" x 10'0"	106 sq. ft	Yes
10	Bath	5'3" x 5'8"	30 sq. ft	Yes
11	Hall	3'11" x 9'1"	35 sq. ft	Yes

Home data report

3457 N Harvest Moon Wy,Eagle,ID,US

#		Dimensions	sqft	Counted as living area
12	Primary Bedroom	17'10" x 23'1"	412 sq. ft	Yes
13	Garage	23'11" x 24'3"	579 sq. ft	No
14	Hall	4'7" x 8'4"	38 sq. ft	Yes
15	Dining Area	13'10" x 10'7"	146 sq. ft	Yes
16	Kitchen	13'10" x 23'9"	328 sq. ft	Yes
17	Primary Bath	14'7" x 15'10"	231 sq. ft	Yes
18	Garage	11'11" x 44'9"	532 sq. ft	No
19	Bedroom	14'1" x 15'8"	221 sq. ft	Yes
20	Laundry	10'7" x 8'8"	92 sq. ft	Yes



Room dimensions

Floor 2

Total:1213sqft

Excluded: 783sqft

#		Dimensions	sqft	Counted as living area
21	Hall	3'7" x 7'4"	26 sq. ft	Yes
22	Bedroom	14'6" x 14'3"	207 sq. ft	Yes
23	Balcony	13'10" x 12'4"	171 sq. ft	No
24	Bedroom	16'7" x 14'1"	233 sq. ft	Yes
25	Bath	10'7" x 7'4"	78 sq. ft	Yes
26	Bath	8'1" x 5'10"	47 sq. ft	Yes
27	Terrace	23'11" x 24'2"	579 sq. ft	No
28	Family Room	16'10" x 23'7"	398 sq. ft	Yes
29	Open To Below	17'0" x 10'5"	177 sq. ft	No
30	Hall	9'9" x 20'1"	196 sq. ft	Yes

1 Floor 1 - Hall



Dimensions: 6'5" x 11'4"
Area: 73 sq. ft
Counted as living area: Yes

Heated: Yes
Finished: Yes
Enclosed: Yes
Contiguous: Yes
Permitted: Yes
Wet space: No
Addition: No
Conversion: No

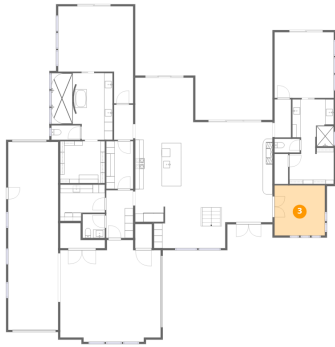
2 Floor 1 - Bath



Dimensions: 6'11" x 3'5"
Area: 24 sq. ft
Counted as living area: Yes

Heated: Yes
Finished: Yes
Enclosed: Yes
Contiguous: Yes
Permitted: Yes
Wet space: Yes
Addition: No
Conversion: No

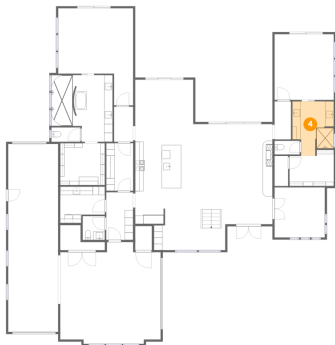
3 Floor 1 - Office



Dimensions: 12'0" x 11'11"
Area: 143 sq. ft
Counted as living area: Yes

Heated: Yes
Finished: Yes
Enclosed: Yes
Contiguous: Yes
Permitted: Yes
Wet space: No
Addition: No
Conversion: No

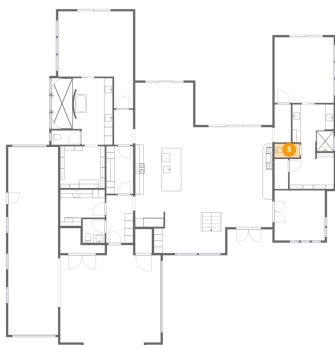
4 Floor 1 - Bath



Dimensions: 9'10" x 13'0"
Area: 128 sq. ft
Counted as living area: Yes

Heated: Yes
Finished: Yes
Enclosed: Yes
Contiguous: Yes
Permitted: Yes
Wet space: Yes
Addition: No
Conversion: No

5 Floor 1 - Bath



Dimensions: 6'0" x 3'3"
Area: 19 sq. ft
Counted as living area: Yes

Heated: Yes
Finished: Yes
Enclosed: Yes
Contiguous: Yes
Permitted: Yes
Wet space: Yes
Addition: No
Conversion: No

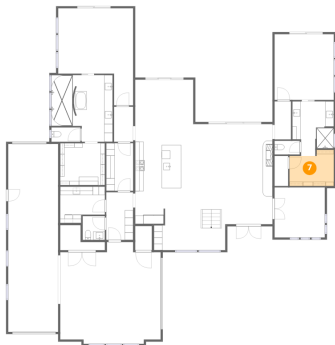
6 Floor 1 - Hall



Dimensions: 6'5" x 11'4"
Area: 73 sq. ft
Counted as living area: Yes

Heated: Yes
Finished: Yes
Enclosed: Yes
Contiguous: Yes
Permitted: Yes
Wet space: No
Addition: No
Conversion: No

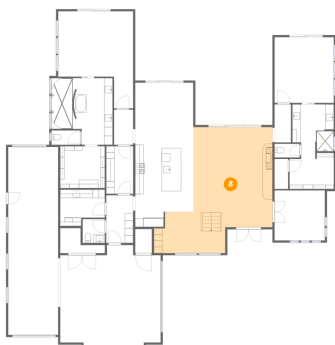
7 Floor 1 - W.I.C.



Dimensions: 10'7" x 8'7"
Area: 91 sq. ft
Counted as living area: Yes

Heated: Yes
Finished: Yes
Enclosed: Yes
Contiguous: Yes
Permitted: Yes
Wet space: No
Addition: No
Conversion: No

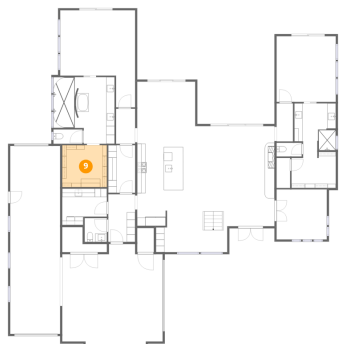
8 Floor 1 - Living Room



Dimensions: 25'6" x 30'0"
Area: 765 sq. ft
Counted as living area: Yes

Heated: Yes
Finished: Yes
Enclosed: Yes
Contiguous: Yes
Permitted: Yes
Wet space: No
Addition: No
Conversion: No

9 Floor 1 - W.I.C.



Dimensions: 10'7" x 10'0"
Area: 106 sq. ft
Counted as living area: Yes

Heated: Yes
Finished: Yes
Enclosed: Yes
Contiguous: Yes
Permitted: Yes
Wet space: No
Addition: No
Conversion: No

10 Floor 1 - Bath



Dimensions: 5'3" x 5'8"
Area: 30 sq. ft
Counted as living area: Yes

Heated: Yes
Finished: Yes
Enclosed: Yes
Contiguous: Yes
Permitted: Yes
Wet space: Yes
Addition: No
Conversion: No

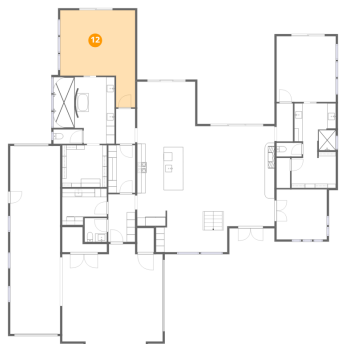
11 Floor 1 - Hall



Dimensions: 3'11" x 9'1"
Area: 35 sq. ft
Counted as living area: Yes

Heated: Yes
Finished: Yes
Enclosed: Yes
Contiguous: Yes
Permitted: Yes
Wet space: No
Addition: No
Conversion: No

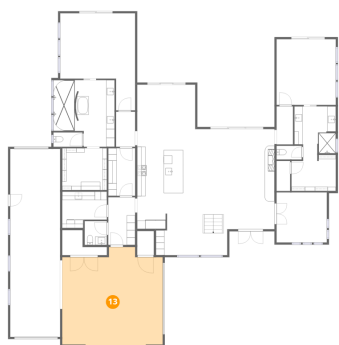
12 Floor 1 - Primary Bedroom



Dimensions: 17'10" x 23'1"
Area: 412 sq. ft
Counted as living area: Yes

Heated: Yes
Finished: Yes
Enclosed: Yes
Contiguous: Yes
Permitted: Yes
Wet space: No
Addition: No
Conversion: No

13 Floor 1 - Garage



Dimensions: 23'11" x 24'3"
Area: 579 sq. ft
Counted as living area: No

Heated: No
Finished: No
Enclosed: Yes
Contiguous: Yes
Permitted: Yes
Wet space: No
Addition: No
Conversion: No

14 Floor 1 - Hall



Dimensions: 4'7" x 8'4"
Area: 38 sq. ft
Counted as living area: Yes

Heated: Yes
Finished: Yes
Enclosed: Yes
Contiguous: Yes
Permitted: Yes
Wet space: No
Addition: No
Conversion: No

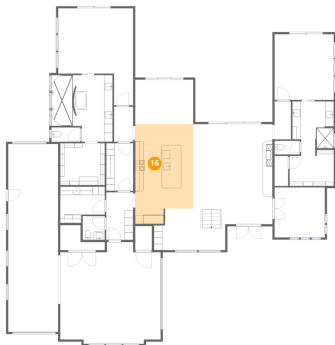
15 Floor 1 - Dining Area



Dimensions: 13'10" x 10'7"
Area: 146 sq. ft
Counted as living area: Yes

Heated: Yes
Finished: Yes
Enclosed: Yes
Contiguous: Yes
Permitted: Yes
Wet space: No
Addition: No
Conversion: No

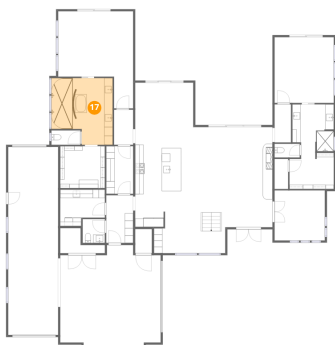
16 Floor 1 - Kitchen



Dimensions: 13'10" x 23'9"
Area: 328 sq. ft
Counted as living area: Yes

Heated: Yes
Finished: Yes
Enclosed: Yes
Contiguous: Yes
Permitted: Yes
Wet space: No
Addition: No
Conversion: No

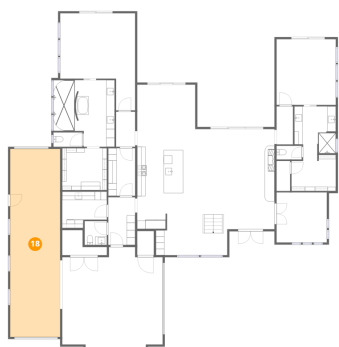
17 Floor 1 - Primary Bath



Dimensions: 14'7" x 15'10"
Area: 231 sq. ft
Counted as living area: Yes

Heated: Yes
Finished: Yes
Enclosed: Yes
Contiguous: Yes
Permitted: Yes
Wet space: Yes
Addition: No
Conversion: No

18 Floor 1 - Garage



Dimensions: 11'11" x 44'9"

Area: 532 sq. ft

Counted as living area: No

Heated: No

Finished: No

Enclosed: Yes

Contiguous: Yes

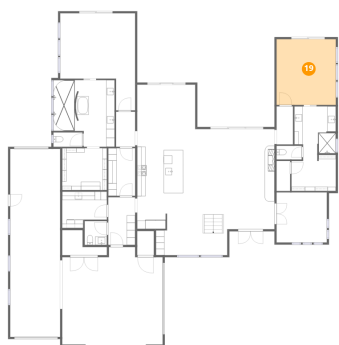
Permitted: Yes

Wet space: No

Addition: No

Conversion: No

19 Floor 1 - Bedroom



Dimensions: 14'1" x 15'8"

Area: 221 sq. ft

Counted as living area: Yes

Heated: Yes

Finished: Yes

Enclosed: Yes

Contiguous: Yes

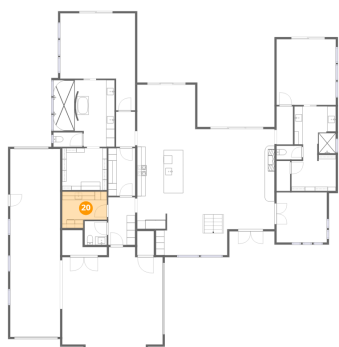
Permitted: Yes

Wet space: No

Addition: No

Conversion: No

20 Floor 1 - Laundry



Dimensions: 10'7" x 8'8"

Area: 92 sq. ft

Counted as living area: Yes

Heated: Yes

Finished: Yes

Enclosed: Yes

Contiguous: Yes

Permitted: Yes

Wet space: No

Addition: No

Conversion: No

21 Floor 2 - Hall



Dimensions: 3'7" x 7'4"
Area: 26 sq. ft
Counted as living area: Yes

Heated: Yes
Finished: Yes
Enclosed: Yes
Contiguous: Yes
Permitted: Yes
Wet space: No
Addition: No
Conversion: No

22 Floor 2 - Bedroom



Dimensions: 14'6" x 14'3"
Area: 207 sq. ft
Counted as living area: Yes

Heated: Yes
Finished: Yes
Enclosed: Yes
Contiguous: Yes
Permitted: Yes
Wet space: No
Addition: No
Conversion: No

23 Floor 2 - Balcony



Dimensions: 13'10" x 12'4"
Area: 171 sq. ft
Counted as living area: No

Heated: No
Finished: No
Enclosed: No
Contiguous: Yes
Permitted: Yes
Wet space: No
Addition: No
Conversion: No

24 Floor 2 - Bedroom



Dimensions: 16'7" x 14'1"
Area: 233 sq. ft
Counted as living area: Yes

Heated: Yes
Finished: Yes
Enclosed: Yes
Contiguous: Yes
Permitted: Yes
Wet space: No
Addition: No
Conversion: No

25 Floor 2 - Bath



Dimensions: 10'7" x 7'4"
Area: 78 sq. ft
Counted as living area: Yes

Heated: Yes
Finished: Yes
Enclosed: Yes
Contiguous: Yes
Permitted: Yes
Wet space: Yes
Addition: No
Conversion: No

26 Floor 2 - Bath



Dimensions: 8'1" x 5'10"
Area: 47 sq. ft
Counted as living area: Yes

Heated: Yes
Finished: Yes
Enclosed: Yes
Contiguous: Yes
Permitted: Yes
Wet space: Yes
Addition: No
Conversion: No

27 Floor 2 - Terrace



Dimensions: 23'11" x 24'2"
Area: 579 sq. ft
Counted as living area: No

Heated: No
Finished: No
Enclosed: No
Contiguous: Yes
Permitted: No
Wet space: No
Addition: No
Conversion: No

28 Floor 2 - Family Room



Dimensions: 16'10" x 23'7"
Area: 398 sq. ft
Counted as living area: Yes

Heated: Yes
Finished: Yes
Enclosed: Yes
Contiguous: Yes
Permitted: Yes
Wet space: No
Addition: No
Conversion: No

29 Floor 2 - Open To Below



Dimensions: 17'0" x 10'5"
Area: 177 sq. ft
Counted as living area: No

Heated: No
Finished: No
Enclosed: No
Contiguous: Yes
Permitted: No
Wet space: No
Addition: No
Conversion: No

30 Floor 2 - Hall



Dimensions: 9'9" x 20'1"
Area: 196 sq. ft
Counted as living area: Yes

Heated: Yes
Finished: Yes
Enclosed: Yes
Contiguous: Yes
Permitted: Yes
Wet space: No
Addition: No
Conversion: No