

120 Point Comfort Lane, Cary, Wake County, North Carolina, United States, 27519

Gross Living Area: 1567 sq. ft

Level 1



| Space | Area (sq. ft) | Calculation |
|----------------------------|---------------|--|
| 1ST FLOOR (Living area) | 754 | Coordinate Polygon Area Algorithm using inches $-((455.3 + 461.3) * (-36.2 - -34.2) + (461.3 + 506.1) * (-34.2 - -34.2) + (506.1 + 506.1) * (-34.2 - 499.7) + (506.1 + 478.2) * (499.7 - 499.7) + (478.2 + 478.2) * (499.7 - 512.3) + (478.2 + 380.5) * (512.3 - 512.3) + (380.5 + 380.5) * (512.3 - 499.7) + (380.5 + 356.4) * (499.7 - 499.7) + (356.4 + 356.4) * (499.7 - 381.2) + (356.4 + 297.1) * (381.2 - 381.2) + (297.1 + 297.1) * (381.2 - 375.2) + (297.1 + 291.1) * (375.2 - 375.2) + (291.1 + 291.1) * (375.2 - -30.2) + (291.1 + 297.1) * (-30.2 - -30.2) + (297.1 + 297.1) * (-30.2 - -36.2) + (297.1 + 455.3) * (-36.2 - -36.2)) * 0.5 * 0.00694$ |

120 Point Comfort Lane, Cary, Wake County, North Carolina, United States, 27519

Gross Living Area: 1567 sq. ft

Level 1

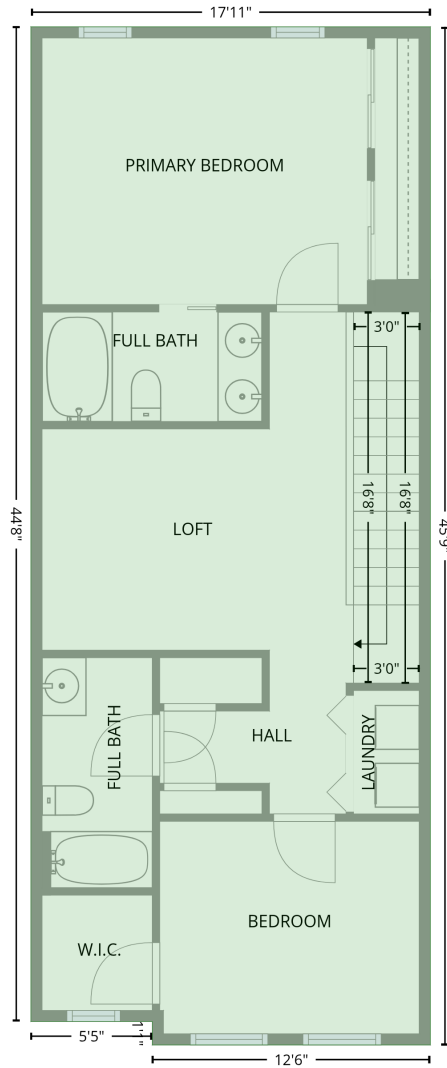
| Space | Area (sq. ft) | Calculation <small>Coordinate Polygon Area Algorithm using inches</small> |
|------------------------------------|---------------|---|
| PORCH (Non-living area) | 49 | $-\left((356.4 + 356.4) * (381.2 - 499.7) + (356.4 + 297.3) * (499.7 - 499.7) + (297.3 + 297.3) * (499.7 - 381.2) + (297.3 + 356.4) * (381.2 - 381.2)\right) * 0.5 * 0.00694$ |
| COVERED PATIO (Non-living area) | 79 | $-\left((455.3 + 455.3) * (-107.9 - -36.2) + (455.3 + 297.3) * (-36.2 - -36.2) + (297.3 + 297.3) * (-36.2 - -107.9) + (297.3 + 455.3) * (-107.9 - -107.9)\right) * 0.5 * 0.00694$ |
| UTILITY (Non-living area) | 26 | $-\left((506.1 + 506.1) * (-107.9 - -34.2) + (506.1 + 461.3) * (-34.2 - -34.2) + (461.3 + 455.3) * (-34.2 - -36.2) + (455.3 + 455.3) * (-36.2 - -107.9) + (455.3 + 506.1) * (-107.9 - -107.9)\right) * 0.5 * 0.00694$ |

120 Point Comfort Lane, Cary, Wake County, North Carolina, United States, 27519

Gross Living Area: 1567 sq. ft

Level 2

2ND FLOOR
[AREA: 813]



| Space | Area (sq. ft) | Calculation <small>Coordinate Polygon Area Algorithm using inches</small> |
|----------------------------|---------------|--|
| 2ND FLOOR (Living area) | 813 | $-((506.1 + 506.1) * (-36.2 - 512.3) + (506.1 + 356.4) * (512.3 - 512.3) + (356.4 + 356.4) * (512.3 - 499.7) + (356.4 + 291.1) * (499.7 - 499.7) + (291.1 + 291.1) * (499.7 - -36.2) + (291.1 + 506.1) * (-36.2 - -36.2)) * 0.5 * 0.00694$ |