

Home data report

2 Commons Drive, Carver, Plymouth County, Massachusetts, United States, 02330



Total Area: 3436 sq. ft

1st Floor: 2000 sq. ft, 2nd Floor: 1436 sq. ft


Excluded: Garage 542 sq. ft, Covered deck 142 sq. ft, Deck 376 sq. ft, Fireplace 11 sq. ft, Open to below 89 sq. ft, Walls: 267 sq. ft

Property summary



Home data report

**2 Commons Drive, Carver, Plymouth County, Massachusetts,
United States, 02330**

 **1**
Half baths

 **1**
Garages

Home data report

2 Commons Drive, Carver, Plymouth County, Massachusetts, United States, 02330



Room dimensions

Floor 1

Total:2000sqft Excluded: 1071sqft

#		Dimensions	sqft	Counted as living area
1	Covered Deck	24'4" x 10'1"	246 sq. ft	No
2	Sun Room	11'5" x 13'1"	150 sq. ft	Yes
3	Garage	23'1" x 23'6"	542 sq. ft	No
4	Deck	12'5" x 8'5"	105 sq. ft	No
5	Living Room	12'6" x 12'4"	154 sq. ft	Yes
6	Pantry	4'10" x 8'11"	43 sq. ft	Yes
7	Deck	26'3" x 13'7"	356 sq. ft	No
8	Dining Room	12'4" x 12'6"	153 sq. ft	Yes
9	Family Room	15'10" x 17'8"	280 sq. ft	Yes
10	Foyer	9'9" x 14'10"	145 sq. ft	Yes
11	Hall	12'11" x 3'6"	45 sq. ft	Yes

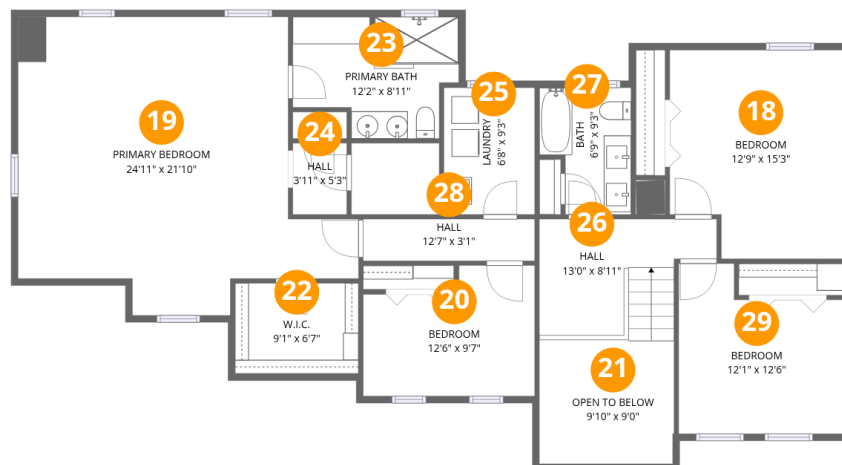
Home data report

**2 Commons Drive, Carver, Plymouth County, Massachusetts,
United States, 02330**

#		Dimensions	sqft	Counted as living area
12	Bedroom	13'0" x 10'6"	137 sq. ft	Yes
13	Eat-in Kitchen	22'6" x 12'10"	288 sq. ft	Yes
14	Living Room	14'4" x 8'11"	128 sq. ft	Yes
15	Bath	13'0" x 6'3"	81 sq. ft	Yes
16	Kitchen	14'4" x 15'5"	221 sq. ft	Yes
17	Bath	7'5" x 8'11"	66 sq. ft	Yes

Home data report

2 Commons Drive, Carver, Plymouth County, Massachusetts,
United States, 02330



Room dimensions

Floor 2

Total:1436sqft Excluded: 89sqft

#		Dimensions	sqft	Counted as living area
18	Bedroom	12'9" x 15'3"	195 sq. ft	Yes
19	Primary Bedroom	24'11" x 21'10"	544 sq. ft	Yes
20	Bedroom	12'6" x 9'7"	120 sq. ft	Yes
21	Open To Below	9'10" x 9'0"	89 sq. ft	No
22	W.I.C.	9'1" x 6'7"	60 sq. ft	Yes
23	Primary Bath	12'2" x 8'11"	108 sq. ft	Yes
24	Hall	3'11" x 5'3"	21 sq. ft	Yes
25	Laundry	6'8" x 9'3"	62 sq. ft	Yes
26	Hall	13'0" x 8'11"	116 sq. ft	Yes
27	Bath	6'9" x 9'3"	62 sq. ft	Yes
28	Hall	12'7" x 3'1"	38 sq. ft	Yes

Home data report

**2 Commons Drive, Carver, Plymouth County, Massachusetts,
United States, 02330**

#		Dimensions	sqft	Counted as living area
29	Bedroom	12'1" x 12'6"	150 sq. ft	Yes

**2 Commons Drive, Carver, Plymouth County, Massachusetts,
United States, 02330**

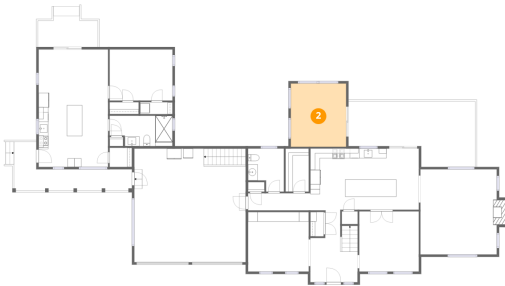
1 Floor 1 - Covered Deck



Dimensions: 24'4" x 10'1"
Area: 246 sq. ft
Counted as living area: No

Heated: No
Finished: No
Enclosed: No
Contiguous: Yes
Permitted: Yes
Wet space: No
Addition: No
Conversion: No

2 Floor 1 - Sun Room

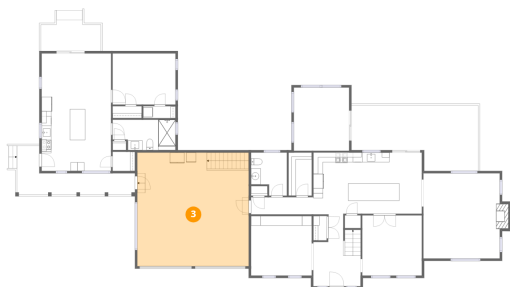


Dimensions: 11'5" x 13'1"
Area: 150 sq. ft
Counted as living area: Yes

Heated: Yes
Finished: Yes
Enclosed: Yes
Contiguous: Yes
Permitted: Yes
Wet space: No
Addition: No
Conversion: No

2 Commons Drive, Carver, Plymouth County, Massachusetts,
United States, 02330

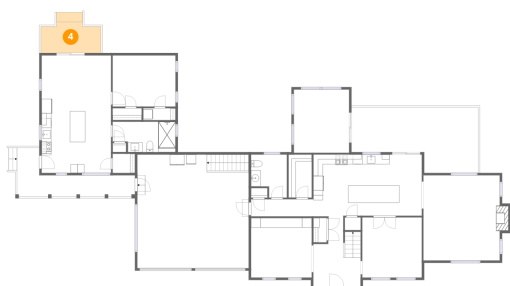
3 Floor 1 - Garage



Dimensions: 23'1" x 23'6"
Area: 542 sq. ft
Counted as living area: No

Heated: No
Finished: No
Enclosed: Yes
Contiguous: Yes
Permitted: Yes
Wet space: No
Addition: No
Conversion: No

4 Floor 1 - Deck



Dimensions: 12'5" x 8'5"
Area: 105 sq. ft
Counted as living area: No

Heated: No
Finished: No
Enclosed: No
Contiguous: Yes
Permitted: Yes
Wet space: No
Addition: No
Conversion: No

5 Floor 1 - Living Room



Dimensions: 12'6" x 12'4"
Area: 154 sq. ft
Counted as living area: Yes

Heated: Yes
Finished: Yes
Enclosed: Yes
Contiguous: Yes
Permitted: Yes
Wet space: No
Addition: No
Conversion: No

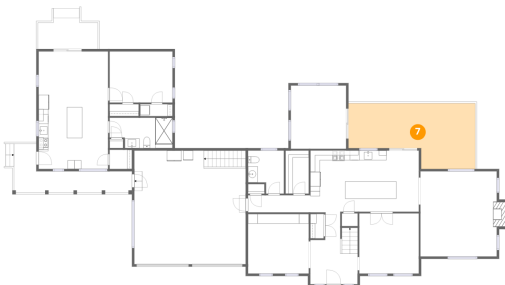
6 Floor 1 - Pantry



Dimensions: 4'10" x 8'11"
Area: 43 sq. ft
Counted as living area: Yes

Heated: Yes
Finished: Yes
Enclosed: Yes
Contiguous: Yes
Permitted: Yes
Wet space: No
Addition: No
Conversion: No

7 Floor 1 - Deck



Dimensions: 26'3" x 13'7"
Area: 356 sq. ft
Counted as living area: No

Heated: No
Finished: No
Enclosed: No
Contiguous: Yes
Permitted: Yes
Wet space: No
Addition: No
Conversion: No

8 Floor 1 - Dining Room



Dimensions: 12'4" x 12'6"
Area: 153 sq. ft
Counted as living area: Yes

Heated: Yes
Finished: Yes
Enclosed: Yes
Contiguous: Yes
Permitted: Yes
Wet space: No
Addition: No
Conversion: No

2 Commons Drive, Carver, Plymouth County, Massachusetts,
United States, 02330

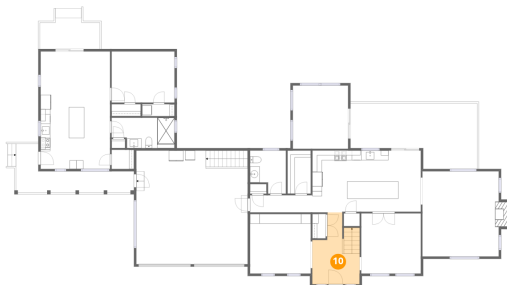
9 Floor 1 - Family Room



Dimensions: 15'10" x 17'8"
Area: 280 sq. ft
Counted as living area: Yes

Heated: Yes
Finished: Yes
Enclosed: Yes
Contiguous: Yes
Permitted: Yes
Wet space: No
Addition: No
Conversion: No

10 Floor 1 - Foyer



Dimensions: 9'9" x 14'10"
Area: 145 sq. ft
Counted as living area: Yes

Heated: Yes
Finished: Yes
Enclosed: Yes
Contiguous: Yes
Permitted: Yes
Wet space: No
Addition: No
Conversion: No

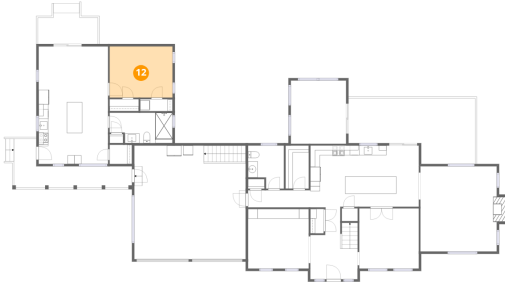
11 Floor 1 - Hall



Dimensions: 12'11" x 3'6"
Area: 45 sq. ft
Counted as living area: Yes

Heated: Yes
Finished: Yes
Enclosed: Yes
Contiguous: Yes
Permitted: Yes
Wet space: No
Addition: No
Conversion: No

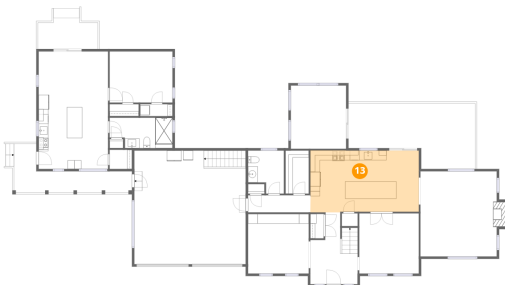
12 Floor 1 - Bedroom



Dimensions: 13'0" x 10'6"
Area: 137 sq. ft
Counted as living area: Yes

Heated: Yes
Finished: Yes
Enclosed: Yes
Contiguous: Yes
Permitted: Yes
Wet space: No
Addition: No
Conversion: No

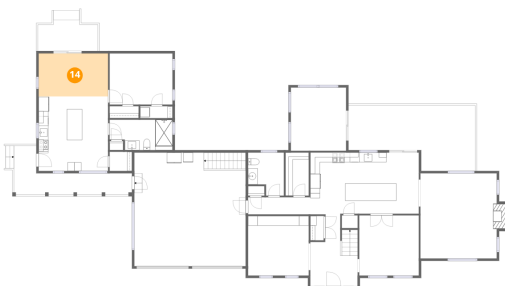
13 Floor 1 - Eat-in Kitchen



Dimensions: 22'6" x 12'10"
Area: 288 sq. ft
Counted as living area: Yes

Heated: Yes
Finished: Yes
Enclosed: Yes
Contiguous: Yes
Permitted: Yes
Wet space: No
Addition: No
Conversion: No

14 Floor 1 - Living Room



Dimensions: 14'4" x 8'11"
Area: 128 sq. ft
Counted as living area: Yes

Heated: Yes
Finished: Yes
Enclosed: Yes
Contiguous: Yes
Permitted: Yes
Wet space: No
Addition: No
Conversion: No

2 Commons Drive, Carver, Plymouth County, Massachusetts,
United States, 02330

15 Floor 1 - Bath



Dimensions: 13'0" x 6'3"
Area: 81 sq. ft
Counted as living area: Yes

Heated: Yes
Finished: Yes
Enclosed: Yes
Contiguous: Yes
Permitted: Yes
Wet space: Yes
Addition: No
Conversion: No

16 Floor 1 - Kitchen



Dimensions: 14'4" x 15'5"
Area: 221 sq. ft
Counted as living area: Yes

Heated: Yes
Finished: Yes
Enclosed: Yes
Contiguous: Yes
Permitted: Yes
Wet space: No
Addition: No
Conversion: No

17 Floor 1 - Bath



Dimensions: 7'5" x 8'11"
Area: 66 sq. ft
Counted as living area: Yes

Heated: Yes
Finished: Yes
Enclosed: Yes
Contiguous: Yes
Permitted: Yes
Wet space: Yes
Addition: No
Conversion: No

2 Commons Drive, Carver, Plymouth County, Massachusetts,
United States, 02330

18 Floor 2 - Bedroom



Dimensions: 12'9" x 15'3"
Area: 195 sq. ft
Counted as living area: Yes

Heated: Yes
Finished: Yes
Enclosed: Yes
Contiguous: Yes
Permitted: Yes
Wet space: No
Addition: No
Conversion: No

19 Floor 2 - Primary Bedroom



Dimensions: 24'11" x 21'10"
Area: 544 sq. ft
Counted as living area: Yes

Heated: Yes
Finished: Yes
Enclosed: Yes
Contiguous: Yes
Permitted: Yes
Wet space: No
Addition: No
Conversion: No

20 Floor 2 - Bedroom

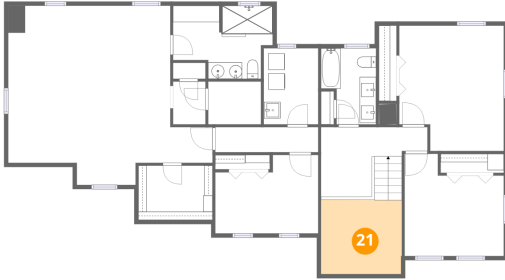


Dimensions: 12'6" x 9'7"
Area: 120 sq. ft
Counted as living area: Yes

Heated: Yes
Finished: Yes
Enclosed: Yes
Contiguous: Yes
Permitted: Yes
Wet space: No
Addition: No
Conversion: No

2 Commons Drive, Carver, Plymouth County, Massachusetts,
United States, 02330

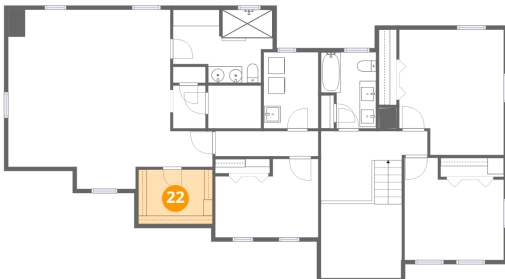
21 Floor 2 - Open To Below



Dimensions: 9'10" x 9'0"
Area: 89 sq. ft
Counted as living area: No

Heated: No
Finished: No
Enclosed: No
Contiguous: Yes
Permitted: No
Wet space: No
Addition: No
Conversion: No

22 Floor 2 - W.I.C.



Dimensions: 9'1" x 6'7"
Area: 60 sq. ft
Counted as living area: Yes

Heated: Yes
Finished: Yes
Enclosed: Yes
Contiguous: Yes
Permitted: Yes
Wet space: No
Addition: No
Conversion: No

23 Floor 2 - Primary Bath



Dimensions: 12'2" x 8'11"
Area: 108 sq. ft
Counted as living area: Yes

Heated: Yes
Finished: Yes
Enclosed: Yes
Contiguous: Yes
Permitted: Yes
Wet space: Yes
Addition: No
Conversion: No

24 Floor 2 - Hall



Dimensions: 3'11" x 5'3"
Area: 21 sq. ft
Counted as living area: Yes

Heated: Yes
Finished: Yes
Enclosed: Yes
Contiguous: Yes
Permitted: Yes
Wet space: No
Addition: No
Conversion: No

25 Floor 2 - Laundry



Dimensions: 6'8" x 9'3"
Area: 62 sq. ft
Counted as living area: Yes

Heated: Yes
Finished: Yes
Enclosed: Yes
Contiguous: Yes
Permitted: Yes
Wet space: No
Addition: No
Conversion: No

26 Floor 2 - Hall



Dimensions: 13'0" x 8'11"
Area: 116 sq. ft
Counted as living area: Yes

Heated: Yes
Finished: Yes
Enclosed: Yes
Contiguous: Yes
Permitted: Yes
Wet space: No
Addition: No
Conversion: No

2 Commons Drive, Carver, Plymouth County, Massachusetts,
United States, 02330

27 Floor 2 - Bath



Dimensions: 6'9" x 9'3"
Area: 62 sq. ft
Counted as living area: Yes

Heated: Yes
Finished: Yes
Enclosed: Yes
Contiguous: Yes
Permitted: Yes
Wet space: Yes
Addition: No
Conversion: No

28 Floor 2 - Hall



Dimensions: 12'7" x 3'1"
Area: 38 sq. ft
Counted as living area: Yes

Heated: Yes
Finished: Yes
Enclosed: Yes
Contiguous: Yes
Permitted: Yes
Wet space: No
Addition: No
Conversion: No

29 Floor 2 - Bedroom



Dimensions: 12'1" x 12'6"
Area: 150 sq. ft
Counted as living area: Yes

Heated: Yes
Finished: Yes
Enclosed: Yes
Contiguous: Yes
Permitted: Yes
Wet space: No
Addition: No
Conversion: No