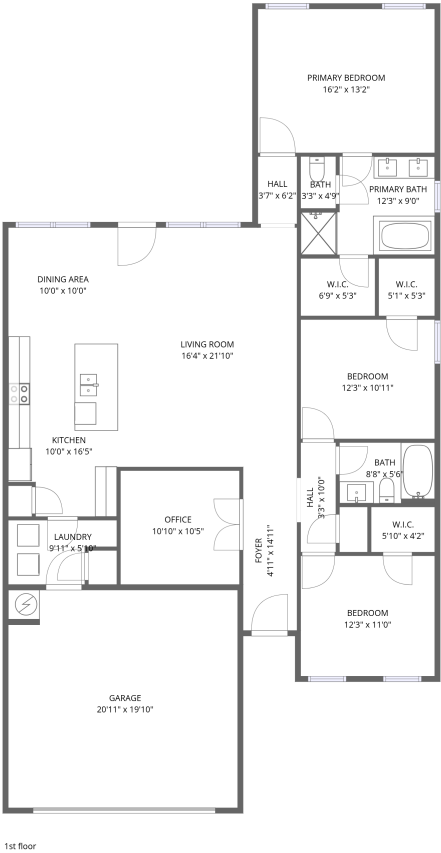


Home data report

14684 Demarie Lane, Athens, Limestone County, Alabama,
United States, 35613




Total Area: 1785 sq. ft

1st Floor: 1785 sq. ft

Excluded: Garage 414 sq. ft

Property summary

 1 Floors

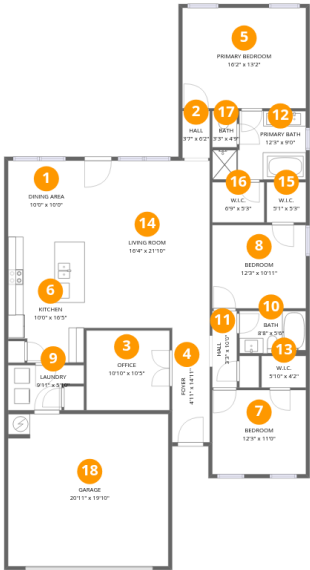
 3 Bedrooms

 2 Bathrooms

 1 Garages

Home data report

14684 Demarie Lane, Athens, Limestone County, Alabama,
United States, 35613



Room dimensions

Floor 1 Total:1785sqft Excluded: 414sqft

#		Dimensions	sqft	Counted as living area
1	Dining Area	10'0" x 10'0"	100 sq. ft	Yes
2	Hall	3'7" x 6'2"	22 sq. ft	Yes
3	Office	10'10" x 10'5"	112 sq. ft	Yes
4	Foyer	4'11" x 14'11"	73 sq. ft	Yes
5	Primary Bedroom	16'2" x 13'2"	212 sq. ft	Yes
6	Kitchen	10'0" x 16'5"	164 sq. ft	Yes
7	Bedroom	12'3" x 11'0"	134 sq. ft	Yes
8	Bedroom	12'3" x 10'11"	133 sq. ft	Yes
9	Laundry	9'11" x 5'10"	58 sq. ft	Yes
10	Bath	8'8" x 5'6"	48 sq. ft	Yes
11	Hall	3'3" x 10'0"	32 sq. ft	Yes

Home data report

**14684 Demarie Lane, Athens, Limestone County, Alabama,
United States, 35613**

#		Dimensions	sqft	Counted as living area
12	Primary Bath	12'3" x 9'0"	110 sq. ft	Yes
13	W.I.C.	5'10" x 4'2"	24 sq. ft	Yes
14	Living Room	16'4" x 21'10"	357 sq. ft	Yes
15	W.I.C.	5'1" x 5'3"	27 sq. ft	Yes
16	W.I.C.	6'9" x 5'3"	36 sq. ft	Yes
17	Bath	3'3" x 4'9"	15 sq. ft	Yes
18	Garage	20'11" x 19'10"	416 sq. ft	No

1 Floor 1 - Dining Area



Dimensions: 10'0" x 10'0"
Area: 100 sq. ft
Counted as living area: Yes

Heated: Yes
Finished: Yes
Enclosed: Yes
Contiguous: Yes
Permitted: Yes
Wet space: No
Addition: No
Conversion: No

2 Floor 1 - Hall



Dimensions: 3'7" x 6'2"
Area: 22 sq. ft
Counted as living area: Yes

Heated: Yes
Finished: Yes
Enclosed: Yes
Contiguous: Yes
Permitted: Yes
Wet space: No
Addition: No
Conversion: No

14684 Demarie Lane, Athens, Limestone County, Alabama,
United States, 35613

3 Floor 1 - Office



Dimensions: 10'10" x 10'5"
Area: 112 sq. ft
Counted as living area: Yes

Heated: Yes
Finished: Yes
Enclosed: Yes
Contiguous: Yes
Permitted: Yes
Wet space: No
Addition: No
Conversion: No

4 Floor 1 - Foyer



Dimensions: 4'11" x 14'11"
Area: 73 sq. ft
Counted as living area: Yes

Heated: Yes
Finished: Yes
Enclosed: Yes
Contiguous: Yes
Permitted: Yes
Wet space: No
Addition: No
Conversion: No

5 Floor 1 - Primary Bedroom



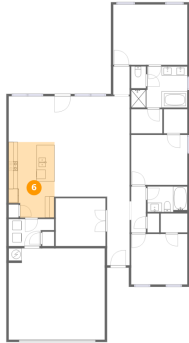
Dimensions: 16'2" x 13'2"
Area: 212 sq. ft
Counted as living area: Yes

Heated: Yes
Finished: Yes
Enclosed: Yes
Contiguous: Yes
Permitted: Yes
Wet space: No
Addition: No
Conversion: No

Home data report

14684 Demarie Lane, Athens, Limestone County, Alabama,
United States, 35613

6 Floor 1 - Kitchen



Dimensions: 10'0" x 16'5"
Area: 164 sq. ft
Counted as living area: Yes

Heated: Yes
Finished: Yes
Enclosed: Yes
Contiguous: Yes
Permitted: Yes
Wet space: No
Addition: No
Conversion: No

7 Floor 1 - Bedroom



Dimensions: 12'3" x 11'0"
Area: 134 sq. ft
Counted as living area: Yes

Heated: Yes
Finished: Yes
Enclosed: Yes
Contiguous: Yes
Permitted: Yes
Wet space: No
Addition: No
Conversion: No

8 Floor 1 - Bedroom



Dimensions: 12'3" x 10'11"
Area: 133 sq. ft
Counted as living area: Yes

Heated: Yes
Finished: Yes
Enclosed: Yes
Contiguous: Yes
Permitted: Yes
Wet space: No
Addition: No
Conversion: No

Home data report

14684 Demarie Lane, Athens, Limestone County, Alabama,
United States, 35613

9 Floor 1 - Laundry



Dimensions: 9'11" x 5'10"
Area: 58 sq. ft
Counted as living area: Yes

Heated: Yes
Finished: Yes
Enclosed: Yes
Contiguous: Yes
Permitted: Yes
Wet space: No
Addition: No
Conversion: No

10 Floor 1 - Bath



Dimensions: 8'8" x 5'6"
Area: 48 sq. ft
Counted as living area: Yes

Heated: Yes
Finished: Yes
Enclosed: Yes
Contiguous: Yes
Permitted: Yes
Wet space: Yes
Addition: No
Conversion: No

11 Floor 1 - Hall



Dimensions: 3'3" x 10'0"
Area: 32 sq. ft
Counted as living area: Yes

Heated: Yes
Finished: Yes
Enclosed: Yes
Contiguous: Yes
Permitted: Yes
Wet space: No
Addition: No
Conversion: No

12 Floor 1 - Primary Bath



Dimensions: 12'3" x 9'0"
Area: 110 sq. ft
Counted as living area: Yes

Heated: Yes
Finished: Yes
Enclosed: Yes
Contiguous: Yes
Permitted: Yes
Wet space: Yes
Addition: No
Conversion: No

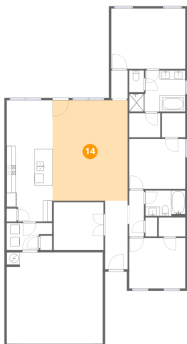
13 Floor 1 - W.I.C.



Dimensions: 5'10" x 4'2"
Area: 24 sq. ft
Counted as living area: Yes

Heated: Yes
Finished: Yes
Enclosed: Yes
Contiguous: Yes
Permitted: Yes
Wet space: No
Addition: No
Conversion: No

14 Floor 1 - Living Room



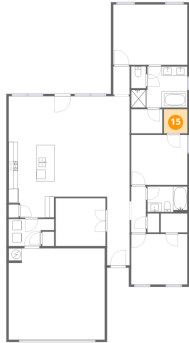
Dimensions: 16'4" x 21'10"
Area: 357 sq. ft
Counted as living area: Yes

Heated: Yes
Finished: Yes
Enclosed: Yes
Contiguous: Yes
Permitted: Yes
Wet space: No
Addition: No
Conversion: No

Home data report

14684 Demarie Lane, Athens, Limestone County, Alabama,
United States, 35613

15 Floor 1 - W.I.C.



Dimensions: 5'1" x 5'3"
Area: 27 sq. ft
Counted as living area: Yes

Heated: Yes
Finished: Yes
Enclosed: Yes
Contiguous: Yes
Permitted: Yes
Wet space: No
Addition: No
Conversion: No

16 Floor 1 - W.I.C.



Dimensions: 6'9" x 5'3"
Area: 36 sq. ft
Counted as living area: Yes

Heated: Yes
Finished: Yes
Enclosed: Yes
Contiguous: Yes
Permitted: Yes
Wet space: No
Addition: No
Conversion: No

17 Floor 1 - Bath



Dimensions: 3'3" x 4'9"
Area: 15 sq. ft
Counted as living area: Yes

Heated: Yes
Finished: Yes
Enclosed: Yes
Contiguous: Yes
Permitted: Yes
Wet space: Yes
Addition: No
Conversion: No

14684 Demarie Lane, Athens, Limestone County, Alabama,
United States, 35613

18 Floor 1 - Garage



Dimensions: 20'11" x 19'10"
Area: 416 sq. ft
Counted as living area: No

Heated: No
Finished: No
Enclosed: Yes
Contiguous: Yes
Permitted: Yes
Wet space: No
Addition: No
Conversion: No