

# Home data report

## 219 Lariat Dr, Spearfish, SD, US



**Total Area: 1413 sq. ft**

Basement: 0 sq. ft, 1st Floor: 1413 sq. ft

Excluded: Basement 478 sq. ft, Storage 107 sq. ft, Utility 761 sq. ft, Garage 382 sq. ft, Undefined 11 sq. ft, Walls: 210 sq. ft

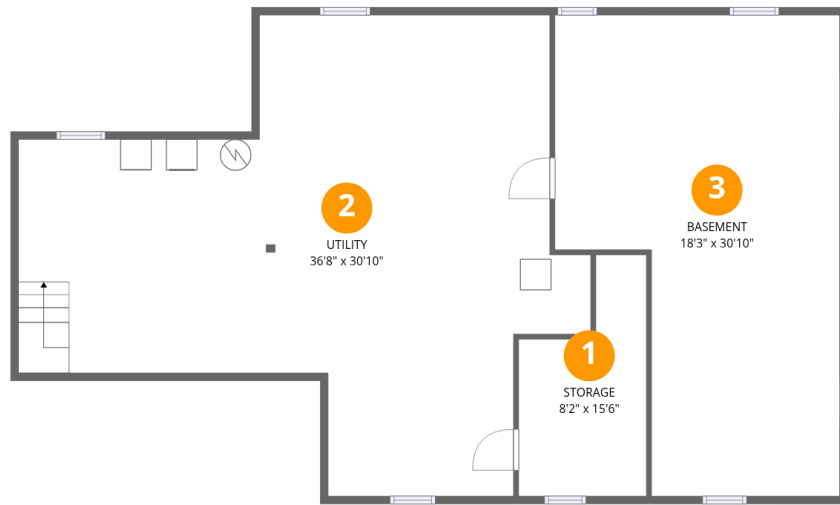
### Property summary

 **2** Floors

 **3** Bedrooms

 **2** Bathrooms

 **1** Garages



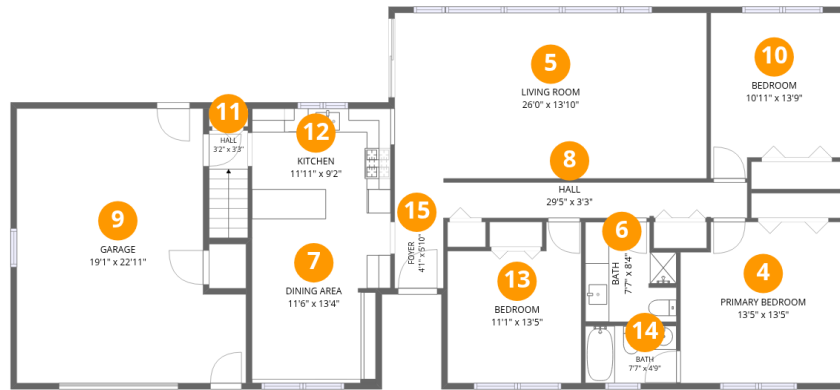
## Room dimensions

Floor 1 Below grade

Total: 0sqft

Excluded: 1346sqft

#		Dimensions	sqft	Counted as living area
1	Storage	8'2" x 15'6"	100 sq. ft	No
2	Utility	36'8" x 30'10"	761 sq. ft	No
3	Basement	18'3" x 30'10"	466 sq. ft	No



## Room dimensions

Floor 2

Total: 1413 sqft Excluded: 393 sqft

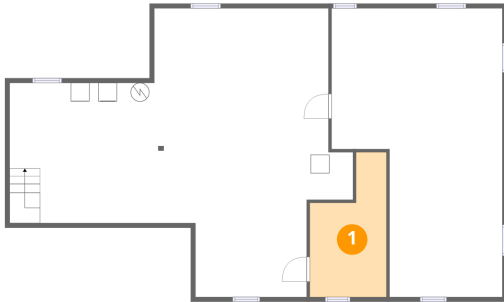
#		Dimensions	sqft	Counted as living area
4	Primary Bedroom	13'5" x 13'5"	174 sq. ft	Yes
5	Living Room	26'0" x 13'10"	359 sq. ft	Yes
6	Bath	7'7" x 8'4"	57 sq. ft	Yes
7	Dining Area	11'6" x 13'4"	148 sq. ft	Yes
8	Hall	29'5" x 3'3"	88 sq. ft	Yes
9	Garage	19'1" x 22'11"	382 sq. ft	No
10	Bedroom	10'11" x 13'9"	137 sq. ft	Yes
11	Hall	3'2" x 3'3"	29 sq. ft	Yes
12	Kitchen	11'11" x 9'2"	107 sq. ft	Yes
13	Bedroom	11'1" x 13'5"	130 sq. ft	Yes
14	Bath	7'7" x 4'9"	36 sq. ft	Yes

Home data report

**219 Lariat Dr,Spearfish,SD,US**

#		Dimensions	sqft	Counted as living area
15	Foyer	4'1" x 5'10"	24 sq. ft	Yes

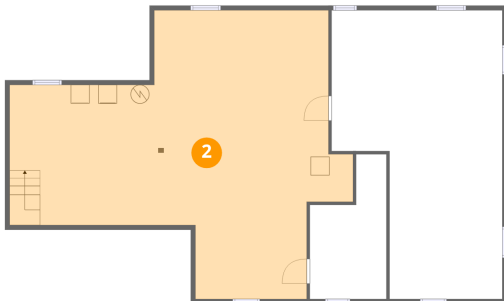
## 1 Floor 1 - Storage



Dimensions: 8'2" x 15'6"  
Area: 100 sq. ft  
Counted as living area: No

Heated: No  
Finished: No  
Enclosed: No  
Contiguous: Yes  
Permitted: Yes  
Wet space: No  
Addition: No  
Conversion: No

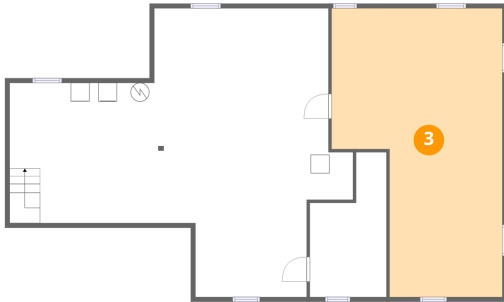
## 2 Floor 1 - Utility



Dimensions: 36'8" x 30'10"  
Area: 761 sq. ft  
Counted as living area: No

Heated: Yes  
Finished: No  
Enclosed: Yes  
Contiguous: Yes  
Permitted: Yes  
Wet space: No  
Addition: No  
Conversion: No

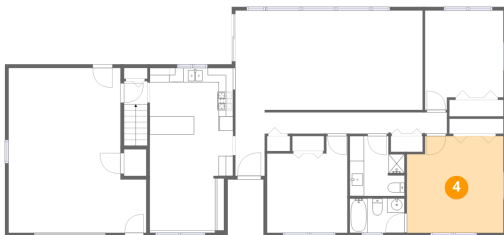
### 3 Floor 1 - Basement



Dimensions: 18'3" x 30'10"  
Area: 466 sq. ft  
Counted as living area: No

Heated: Yes  
Finished: No  
Enclosed: Yes  
Contiguous: Yes  
Permitted: Yes  
Wet space: No  
Addition: No  
Conversion: No

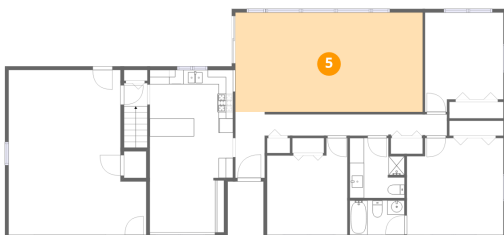
### 4 Floor 2 - Primary Bedroom



Dimensions: 13'5" x 13'5"  
Area: 174 sq. ft  
Counted as living area: Yes

Heated: Yes  
Finished: Yes  
Enclosed: Yes  
Contiguous: Yes  
Permitted: Yes  
Wet space: No  
Addition: No  
Conversion: No

### 5 Floor 2 - Living Room



Dimensions: 26'0" x 13'10"  
Area: 359 sq. ft  
Counted as living area: Yes

Heated: Yes  
Finished: Yes  
Enclosed: Yes  
Contiguous: Yes  
Permitted: Yes  
Wet space: No  
Addition: No  
Conversion: No

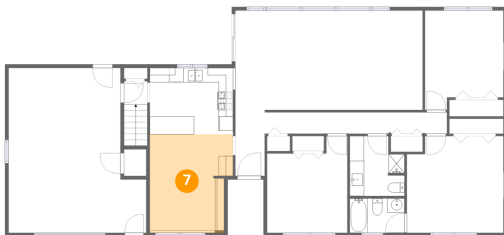
## 6 Floor 2 - Bath



Dimensions: 7'7" x 8'4"  
Area: 57 sq. ft  
Counted as living area: Yes

Heated: Yes  
Finished: Yes  
Enclosed: Yes  
Contiguous: Yes  
Permitted: Yes  
Wet space: Yes  
Addition: No  
Conversion: No

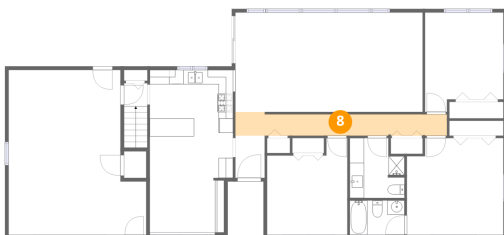
## 7 Floor 2 - Dining Area



Dimensions: 11'6" x 13'4"  
Area: 148 sq. ft  
Counted as living area: Yes

Heated: Yes  
Finished: Yes  
Enclosed: Yes  
Contiguous: Yes  
Permitted: Yes  
Wet space: No  
Addition: No  
Conversion: No

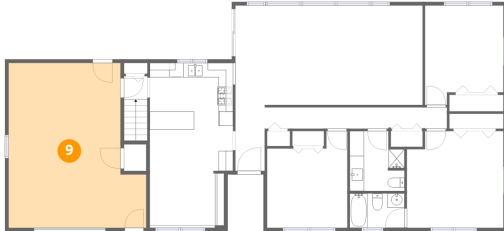
## 8 Floor 2 - Hall



Dimensions: 29'5" x 3'3"  
Area: 88 sq. ft  
Counted as living area: Yes

Heated: Yes  
Finished: Yes  
Enclosed: Yes  
Contiguous: Yes  
Permitted: Yes  
Wet space: No  
Addition: No  
Conversion: No

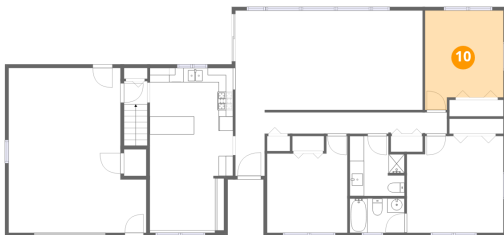
## 9 Floor 2 - Garage



Dimensions: 19'1" x 22'11"  
Area: 382 sq. ft  
Counted as living area: No

Heated: No  
Finished: No  
Enclosed: Yes  
Contiguous: Yes  
Permitted: Yes  
Wet space: No  
Addition: No  
Conversion: No

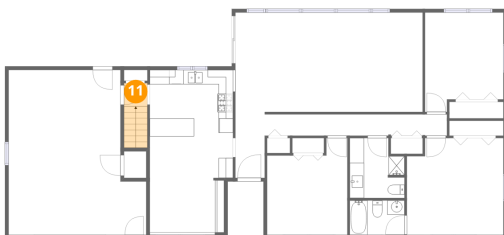
## 10 Floor 2 - Bedroom



Dimensions: 10'11" x 13'9"  
Area: 137 sq. ft  
Counted as living area: Yes

Heated: Yes  
Finished: Yes  
Enclosed: Yes  
Contiguous: Yes  
Permitted: Yes  
Wet space: No  
Addition: No  
Conversion: No

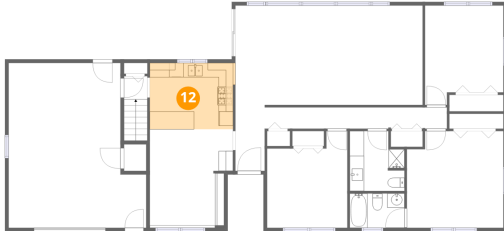
## 11 Floor 2 - Hall



Dimensions: 3'2" x 3'3"  
Area: 29 sq. ft  
Counted as living area: Yes

Heated: Yes  
Finished: Yes  
Enclosed: Yes  
Contiguous: Yes  
Permitted: Yes  
Wet space: No  
Addition: No  
Conversion: No

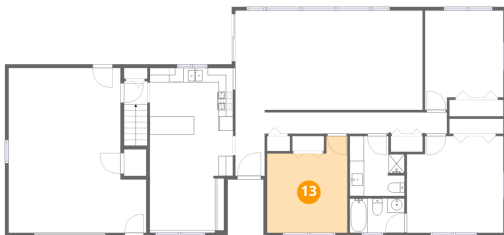
## 12 Floor 2 - Kitchen



Dimensions: 11'11" x 9'2"  
Area: 107 sq. ft  
Counted as living area: Yes

Heated: Yes  
Finished: Yes  
Enclosed: Yes  
Contiguous: Yes  
Permitted: Yes  
Wet space: No  
Addition: No  
Conversion: No

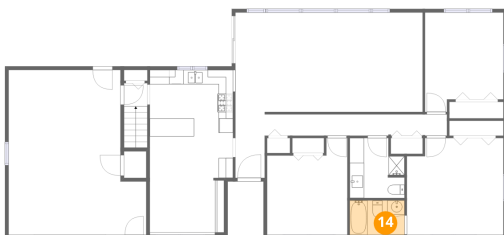
## 13 Floor 2 - Bedroom



Dimensions: 11'1" x 13'5"  
Area: 130 sq. ft  
Counted as living area: Yes

Heated: Yes  
Finished: Yes  
Enclosed: Yes  
Contiguous: Yes  
Permitted: Yes  
Wet space: No  
Addition: No  
Conversion: No

## 14 Floor 2 - Bath

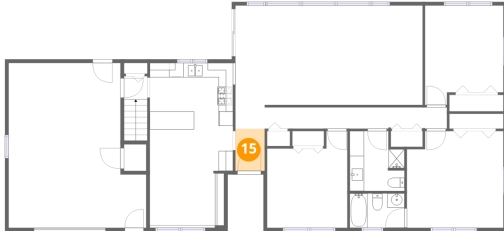


Dimensions: 7'7" x 4'9"  
Area: 36 sq. ft  
Counted as living area: Yes

Heated: Yes  
Finished: Yes  
Enclosed: Yes  
Contiguous: Yes  
Permitted: Yes  
Wet space: Yes  
Addition: No  
Conversion: No

**15** Floor 2 - Foyer

---



Dimensions: 4'1" x 5'10"  
Area: 24 sq. ft  
Counted as living area: Yes

Heated: Yes  
Finished: Yes  
Enclosed: Yes  
Contiguous: Yes  
Permitted: Yes  
Wet space: No  
Addition: No  
Conversion: No