

Home data report

225 Hillcrest Drive, Rocky Mount, Franklin County, Virginia,
United States, 24151



Total Area: 1882 sq. ft

1st Floor: 497 sq. ft, 2nd Floor: 1385 sq. ft

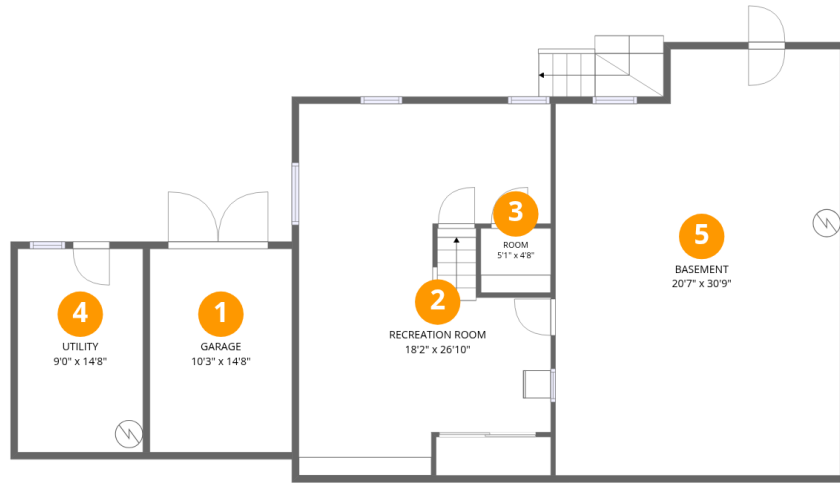
Excluded: Garage 151 sq. ft, Utility 133 sq. ft, Basement 600 sq. ft, Fireplace 9 sq. ft,
Walls: 201 sq. ft

Property summary



Home data report

225 Hillcrest Drive, Rocky Mount, Franklin County, Virginia,
United States, 24151



Room dimensions

Floor 1

Total:497sqft

Excluded: 884sqft

| # | | Dimensions | sqft | Counted as living area |
|---|-----------------|----------------|------------|------------------------|
| 1 | Garage | 10'3" x 14'8" | 151 sq. ft | No |
| 2 | Recreation Room | 18'2" x 26'10" | 431 sq. ft | Yes |
| 3 | Room | 5'1" x 4'8" | 24 sq. ft | Yes |
| 4 | Utility | 9'0" x 14'8" | 133 sq. ft | No |
| 5 | Basement | 20'7" x 30'9" | 600 sq. ft | No |

Home data report

225 Hillcrest Drive, Rocky Mount, Franklin County, Virginia,
United States, 24151



Room dimensions

Floor 2

Total:1385sqft Excluded: 9sqft

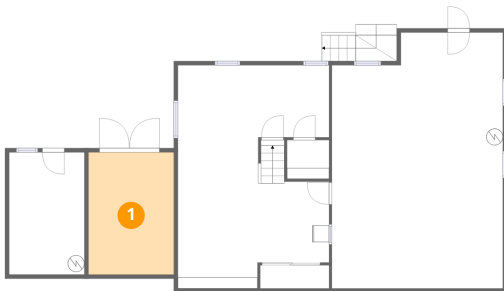
| # | | Dimensions | sqft | Counted as living area |
|----|-----------------|---------------|------------|------------------------|
| 6 | Family Room | 10'5" x 14'1" | 147 sq. ft | Yes |
| 7 | W.I.C. | 4'2" x 5'3" | 22 sq. ft | Yes |
| 8 | Room | 9'8" x 12'5" | 120 sq. ft | Yes |
| 9 | Hall | 3'5" x 9'8" | 33 sq. ft | Yes |
| 10 | Bath | 8'6" x 6'8" | 47 sq. ft | Yes |
| 11 | Bath | 10'1" x 4'11" | 49 sq. ft | Yes |
| 12 | Living Room | 15'9" x 14'1" | 229 sq. ft | Yes |
| 13 | Eat-in Kitchen | 16'6" x 12'5" | 162 sq. ft | Yes |
| 14 | Primary Bedroom | 20'0" x 9'5" | 171 sq. ft | Yes |
| 15 | Bedroom | 12'3" x 11'3" | 138 sq. ft | Yes |
| 16 | Pantry | 2'5" x 5'0" | 12 sq. ft | Yes |

Home data report

**225 Hillcrest Drive, Rocky Mount, Franklin County, Virginia,
United States, 24151**

| # | | Dimensions | sqft | Counted as living area |
|----|---------|---------------|------------|------------------------|
| 17 | Bedroom | 12'3" x 10'7" | 131 sq. ft | Yes |

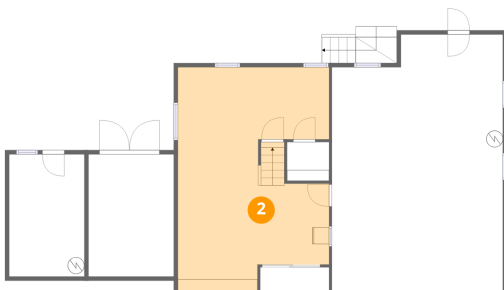
1 Floor 1 - Garage



Dimensions: 10'3" x 14'8"
Area: 151 sq. ft
Counted as living area: No

Heated: No
Finished: No
Enclosed: Yes
Contiguous: Yes
Permitted: Yes
Wet space: No
Addition: No
Conversion: No

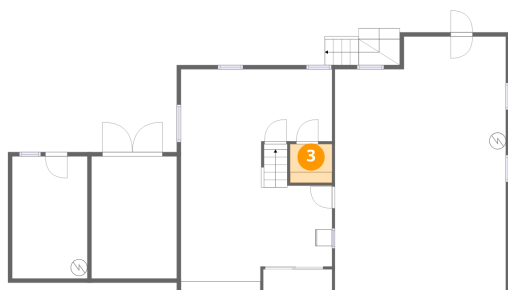
2 Floor 1 - Recreation Room



Dimensions: 18'2" x 26'10"
Area: 431 sq. ft
Counted as living area: Yes

Heated: Yes
Finished: Yes
Enclosed: Yes
Contiguous: Yes
Permitted: Yes
Wet space: No
Addition: No
Conversion: No

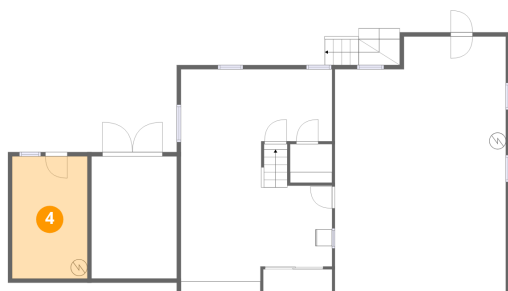
3 Floor 1 - Room



Dimensions: 5'1" x 4'8"
Area: 24 sq. ft
Counted as living area: Yes

Heated: Yes
Finished: Yes
Enclosed: Yes
Contiguous: Yes
Permitted: Yes
Wet space: No
Addition: No
Conversion: No

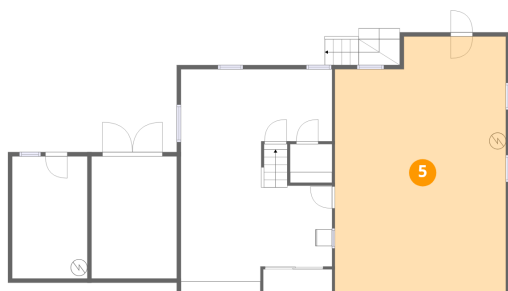
4 Floor 1 - Utility



Dimensions: 9'0" x 14'8"
Area: 133 sq. ft
Counted as living area: No

Heated: Yes
Finished: No
Enclosed: Yes
Contiguous: Yes
Permitted: Yes
Wet space: No
Addition: No
Conversion: No

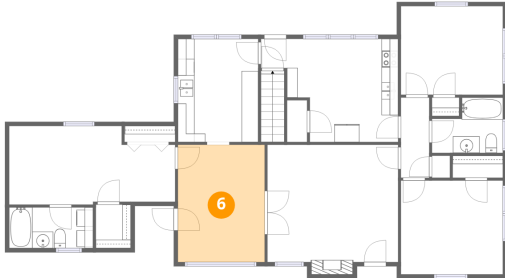
5 Floor 1 - Basement



Dimensions: 20'7" x 30'9"
Area: 600 sq. ft
Counted as living area: No

Heated: Yes
Finished: No
Enclosed: Yes
Contiguous: Yes
Permitted: Yes
Wet space: No
Addition: No
Conversion: No

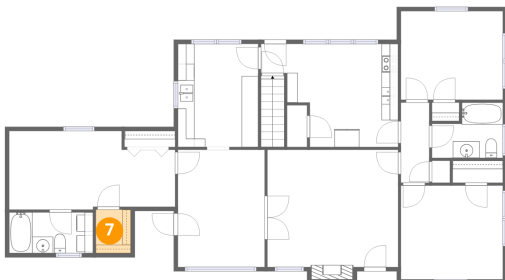
6 Floor 2 - Family Room



Dimensions: 10'5" x 14'1"
Area: 147 sq. ft
Counted as living area: Yes

Heated: Yes
Finished: Yes
Enclosed: Yes
Contiguous: Yes
Permitted: Yes
Wet space: No
Addition: No
Conversion: No

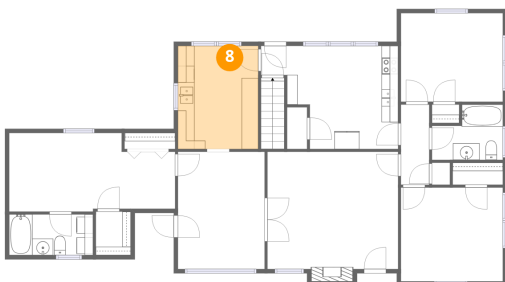
7 Floor 2 - W.I.C.



Dimensions: 4'2" x 5'3"
Area: 22 sq. ft
Counted as living area: Yes

Heated: Yes
Finished: Yes
Enclosed: Yes
Contiguous: Yes
Permitted: Yes
Wet space: No
Addition: No
Conversion: No

8 Floor 2 - Room



Dimensions: 9'8" x 12'5"
Area: 120 sq. ft
Counted as living area: Yes

Heated: Yes
Finished: Yes
Enclosed: Yes
Contiguous: Yes
Permitted: Yes
Wet space: No
Addition: No
Conversion: No

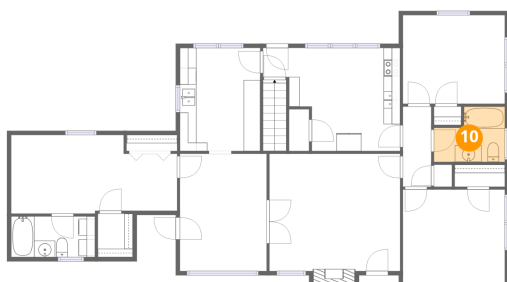
9 Floor 2 - Hall



Dimensions: 3'5" x 9'8"
Area: 33 sq. ft
Counted as living area: Yes

Heated: Yes
Finished: Yes
Enclosed: Yes
Contiguous: Yes
Permitted: Yes
Wet space: No
Addition: No
Conversion: No

10 Floor 2 - Bath



Dimensions: 8'6" x 6'8"
Area: 47 sq. ft
Counted as living area: Yes

Heated: Yes
Finished: Yes
Enclosed: Yes
Contiguous: Yes
Permitted: Yes
Wet space: Yes
Addition: No
Conversion: No

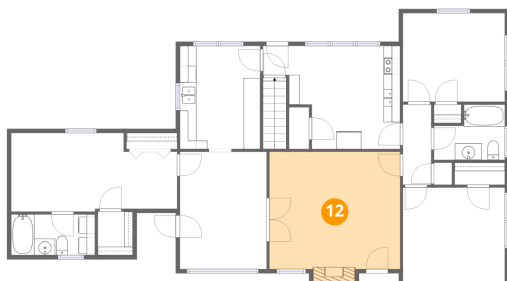
11 Floor 2 - Bath



Dimensions: 10'1" x 4'11"
Area: 49 sq. ft
Counted as living area: Yes

Heated: Yes
Finished: Yes
Enclosed: Yes
Contiguous: Yes
Permitted: Yes
Wet space: Yes
Addition: No
Conversion: No

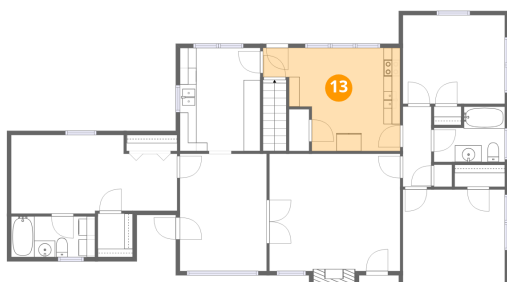
12 Floor 2 - Living Room



Dimensions: 15'9" x 14'1"
Area: 229 sq. ft
Counted as living area: Yes

Heated: Yes
Finished: Yes
Enclosed: Yes
Contiguous: Yes
Permitted: Yes
Wet space: No
Addition: No
Conversion: No

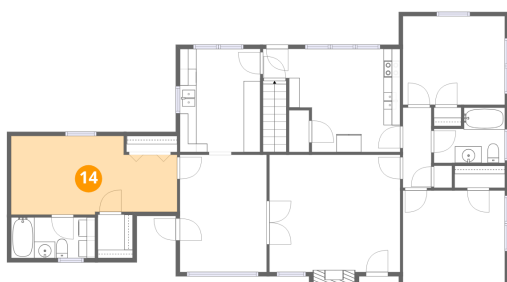
13 Floor 2 - Eat-in Kitchen



Dimensions: 16'6" x 12'5"
Area: 162 sq. ft
Counted as living area: Yes

Heated: Yes
Finished: Yes
Enclosed: Yes
Contiguous: Yes
Permitted: Yes
Wet space: No
Addition: No
Conversion: No

14 Floor 2 - Primary Bedroom



Dimensions: 20'0" x 9'5"
Area: 171 sq. ft
Counted as living area: Yes

Heated: Yes
Finished: Yes
Enclosed: Yes
Contiguous: Yes
Permitted: Yes
Wet space: No
Addition: No
Conversion: No

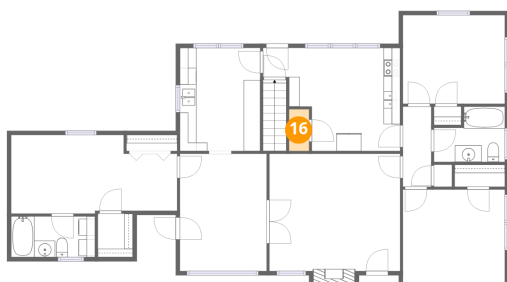
15 Floor 2 - Bedroom



Dimensions: 12'3" x 11'3"
Area: 138 sq. ft
Counted as living area: Yes

Heated: Yes
Finished: Yes
Enclosed: Yes
Contiguous: Yes
Permitted: Yes
Wet space: No
Addition: No
Conversion: No

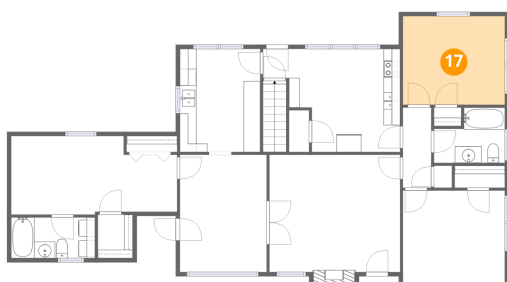
16 Floor 2 - Pantry



Dimensions: 2'5" x 5'0"
Area: 12 sq. ft
Counted as living area: Yes

Heated: Yes
Finished: Yes
Enclosed: Yes
Contiguous: Yes
Permitted: Yes
Wet space: No
Addition: No
Conversion: No

17 Floor 2 - Bedroom



Dimensions: 12'3" x 10'7"
Area: 131 sq. ft
Counted as living area: Yes

Heated: Yes
Finished: Yes
Enclosed: Yes
Contiguous: Yes
Permitted: Yes
Wet space: No
Addition: No
Conversion: No