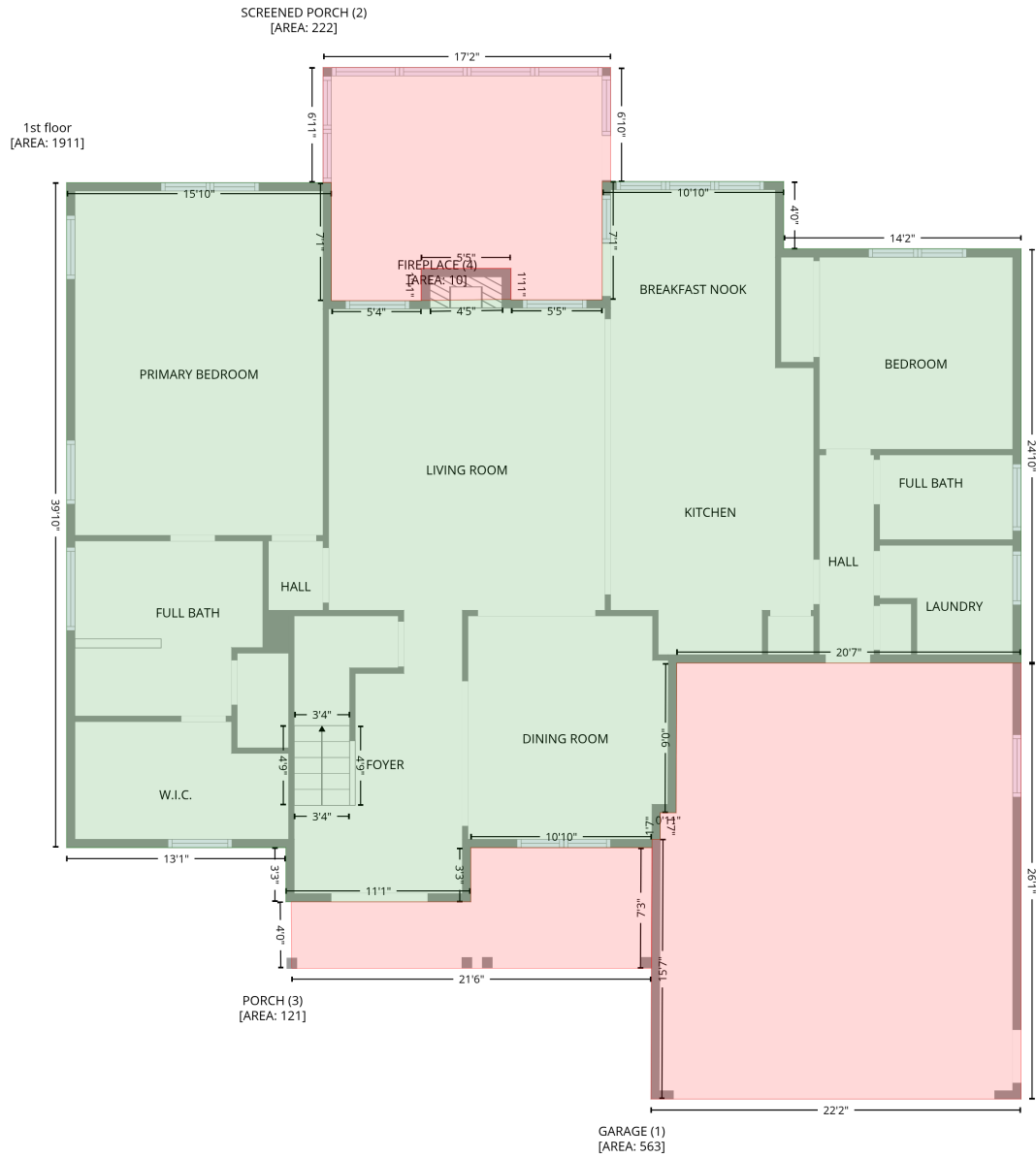


# 4821 Sweet Chestnut Ln, Raleigh, NC, US

Gross Living Area: 3642 sq. ft

## Level 1



# 4821 Sweet Chestnut Ln,Raleigh,NC,US

Gross Living Area: 3642 sq. ft

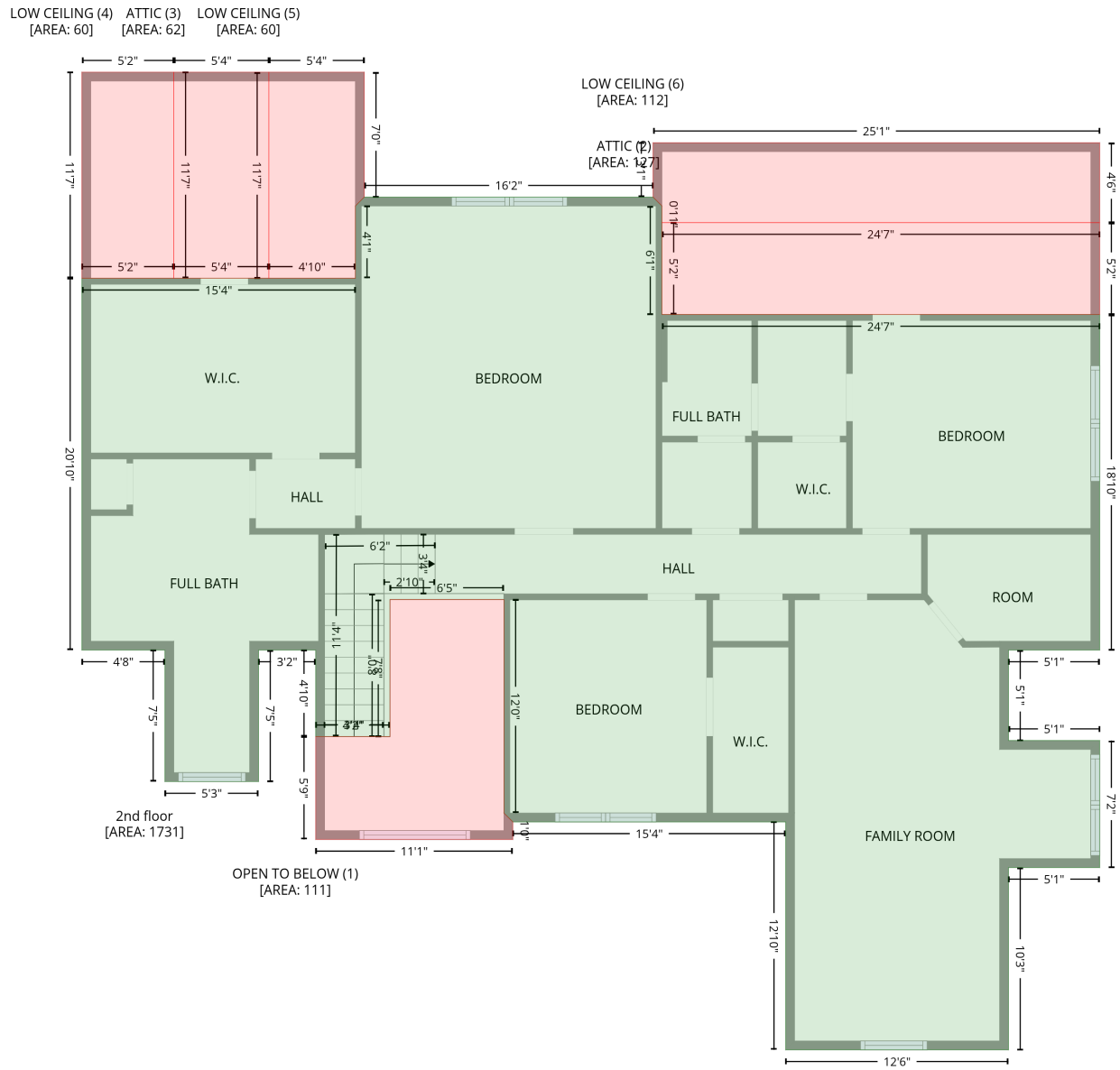
## Level 1

Space	Area (sq. ft)	Calculation <small>Coordinate Polygon Area Algorithm using inches</small>
1st floor (Living area)	1911	$-\left((524.5 + 524.5) * (123.5 - 172) + (524.5 + 694.9) * (172 - 172) + (694.9 + 694.9) * (172 - 469.7) + (694.9 + 447.6) * (469.7 - 469.7) + (447.6 + 447.2) * (469.7 - 577.3) + (447.2 + 435.9) * (577.3 - 577.2) + (435.9 + 435.8) * (577.2 - 596.4) + (435.8 + 429.9) * (596.4 - 596.4) + (429.9 + 429.9) * (596.4 - 602.4) + (429.9 + 299.7) * (602.4 - 602.4) + (299.7 + 299.7) * (602.4 - 641.3) + (299.7 + 166.9) * (641.3 - 641.3) + (166.9 + 166.9) * (641.3 - 602.4) + (166.9 + 9.4) * (602.4 - 602.4) + (9.4 + 9.4) * (602.4 - 124.4) + (9.4 + 199.6) * (124.4 - 124.4) + (199.6 + 199.6) * (124.4 - 209.2) + (199.6 + 264.1) * (209.2 - 209.2) + (264.1 + 264.1) * (209.2 - 209.1) + (264.1 + 270.1) * (209.1 - 209.1) + (270.1 + 322.6) * (209.1 - 208.3) + (322.6 + 328.6) * (208.3 - 208.3) + (328.6 + 328.6) * (208.3 - 208.6) + (328.6 + 394.1) * (208.6 - 208.6) + (394.1 + 394.1) * (208.6 - 123.5) + (394.1 + 524.5) * (123.5 - 123.5)) * 0.5 * 0.00694$
GARAGE (Non-living area)	563	$-\left((694.9 + 694.9) * (469.7 - 783.1) + (694.9 + 429.1) * (783.1 - 783.1) + (429.1 + 429.9) * (783.1 - 596.4) + (429.9 + 435.8) * (596.4 - 596.4) + (435.8 + 435.8) * (596.4 - 577.2) + (435.8 + 447.2) * (577.2 - 577.3) + (447.2 + 447.6) * (577.3 - 469.7) + (447.6 + 694.9) * (469.7 - 469.7)) * 0.5 * 0.00694$
SCREENED PORCH (Non-living area)	222	$-\left((400.1 + 400.1) * (41.6 - 123.5) + (400.1 + 394.1) * (123.5 - 123.5) + (394.1 + 394.1) * (123.5 - 208.6) + (394.1 + 328.6) * (208.6 - 208.6) + (328.6 + 328.6) * (208.6 - 186) + (328.6 + 264.1) * (186 - 186) + (264.1 + 264.1) * (186 - 209.2) + (264.1 + 199.6) * (209.2 - 209.2) + (199.6 + 199.6) * (209.2 - 124.4) + (199.6 + 193.6) * (124.4 - 124.4) + (193.6 + 193.6) * (124.4 - 41.6) + (193.6 + 400.1) * (41.6 - 41.6)) * 0.5 * 0.00694$
PORCH (Non-living area)	121	$-\left((429.9 + 429.5) * (602.4 - 689) + (429.5 + 171.1) * (689 - 689) + (171.1 + 170.7) * (689 - 641.3) + (170.7 + 299.7) * (641.3 - 641.3) + (299.7 + 299.7) * (641.3 - 602.4) + (299.7 + 429.9) * (602.4 - 602.4)) * 0.5 * 0.00694$
FIREPLACE (Non-living area)	10	$-\left((328.6 + 328.6) * (186 - 208.3) + (328.6 + 322.6) * (208.3 - 208.3) + (322.6 + 270.1) * (208.3 - 209.1) + (270.1 + 264.1) * (209.1 - 209.1) + (264.1 + 264.1) * (209.1 - 186) + (264.1 + 328.6) * (186 - 186)) * 0.5 * 0.00694$

# 4821 Sweet Chestnut Ln, Raleigh, NC, US

Gross Living Area: 3642 sq. ft

## Level 2



# 4821 Sweet Chestnut Ln,Raleigh,NC,US

Gross Living Area: 3642 sq. ft

## Level 2

Space	Area (sq. ft)	Calculation <small>Coordinate Polygon Area Algorithm using inches</small>
2nd floor (Living area)	1731	$-\left((394.1 + 400.1) * (208.6 - 214.6) + (400.1 + 400.1) * (214.6 - 287.7) + (400.1 + 694.9) * (287.7 - 287.7) + (694.9 + 694.9) * (287.7 - 513.8) + (694.9 + 633.5) * (513.8 - 513.8) + (633.5 + 633.5) * (513.8 - 574.7) + (633.5 + 694.9) * (574.7 - 574.7) + (694.9 + 694.9) * (574.7 - 660.2) + (694.9 + 633.5) * (660.2 - 660.2) + (633.5 + 633.5) * (660.2 - 783.1) + (633.5 + 483.4) * (783.1 - 783.1) + (483.4 + 483.4) * (783.1 - 629.5) + (483.4 + 299.7) * (629.5 - 629.5) + (299.7 + 293.7) * (629.5 - 623.5) + (293.7 + 293.7) * (623.5 - 479.7) + (293.7 + 216.9) * (479.7 - 479.7) + (216.9 + 216.9) * (479.7 - 572.1) + (216.9 + 166.9) * (572.1 - 572.1) + (166.9 + 166.9) * (572.1 - 513.8) + (166.9 + 128.4) * (513.8 - 513.8) + (128.4 + 128.4) * (513.8 - 602.4) + (128.4 + 65.3) * (602.4 - 602.4) + (65.3 + 65.3) * (602.4 - 513.8) + (65.3 + 9.4) * (513.8 - 513.8) + (9.4 + 9.4) * (513.8 - 263.3) + (9.4 + 193.6) * (263.3 - 263.3) + (193.6 + 193.6) * (263.3 - 214.6) + (193.6 + 199.6) * (214.6 - 208.6) + (199.6 + 394.1) * (208.6 - 208.6)) * 0.5 * 0.00694$
OPEN TO BELOW (Non-living area)	111	$-\left((293.7 + 293.7) * (479.7 - 623.5) + (293.7 + 299.7) * (623.5 - 629.5) + (299.7 + 299.7) * (629.5 - 641.3) + (299.7 + 166.9) * (641.3 - 641.3) + (166.9 + 166.9) * (641.3 - 572.1) + (166.9 + 216.9) * (572.1 - 572.1) + (216.9 + 216.9) * (572.1 - 479.7) + (216.9 + 293.7) * (479.7 - 479.7)) * 0.5 * 0.00694$
ATTIC (Non-living area)	127	$-\left((694.9 + 694.9) * (225.8 - 287.7) + (694.9 + 400.1) * (287.7 - 287.7) + (400.1 + 400.1) * (287.7 - 225.8) + (400.1 + 694.9) * (225.8 - 225.8)) * 0.5 * 0.00694$
ATTIC (Non-living area)	62	$-\left((135.4 + 135.4) * (124.4 - 263.3) + (135.4 + 71.4) * (263.3 - 263.3) + (71.4 + 71.4) * (263.3 - 124.4) + (71.4 + 135.4) * (124.4 - 124.4)) * 0.5 * 0.00694$
LOW CEILING (Non-living area)	60	$-\left((71.4 + 71.4) * (124.4 - 263.3) + (71.4 + 9.4) * (263.3 - 263.3) + (9.4 + 9.4) * (263.3 - 124.4) + (9.4 + 71.4) * (124.4 - 124.4)) * 0.5 * 0.00694$
LOW CEILING (Non-living area)	60	$-\left((199.6 + 199.6) * (124.4 - 208.6) + (199.6 + 193.6) * (208.6 - 214.6) + (193.6 + 193.6) * (214.6 - 263.3) + (193.6 + 135.4) * (263.3 - 263.3) + (135.4 + 135.4) * (263.3 - 124.4) + (135.4 + 199.6) * (124.4 - 124.4)) * 0.5 * 0.00694$
LOW CEILING (Non-living area)	112	$-\left((694.9 + 694.9) * (172 - 225.8) + (694.9 + 400.1) * (225.8 - 225.8) + (400.1 + 400.1) * (225.8 - 214.6) + (400.1 + 394.1) * (214.6 - 208.6) + (394.1 + 394.1) * (208.6 - 172) + (394.1 + 694.9) * (172 - 172)) * 0.5 * 0.00694$