

104-32025 Tims Ave

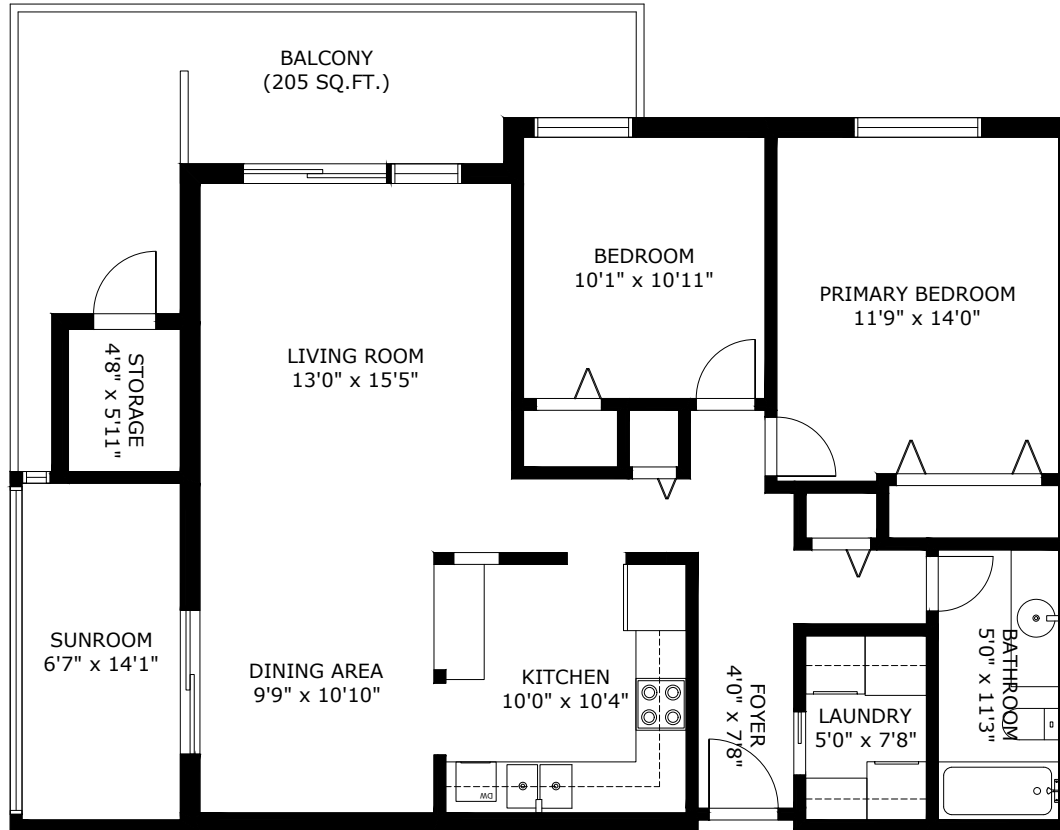
Abbotsford BC V2T 2H3

Total Area 1,100 SQ.FT.
Balcony Area: 205 SQ.FT.
Ceiling Height 8'0"

2
BEDROOMS

1
BATHROOMS

1,100
TOTAL SQ.FT.



104-32025 TIMS AVE ABBOTSFORD BC V2T 2H3

Measurements are approximate and may not be to scale. Gross measurements provided by agent.
The floor plan illustration is not suitable for construction/architectural purposes.
This communication is not intended to cause or induce breach of an existing agency agreement