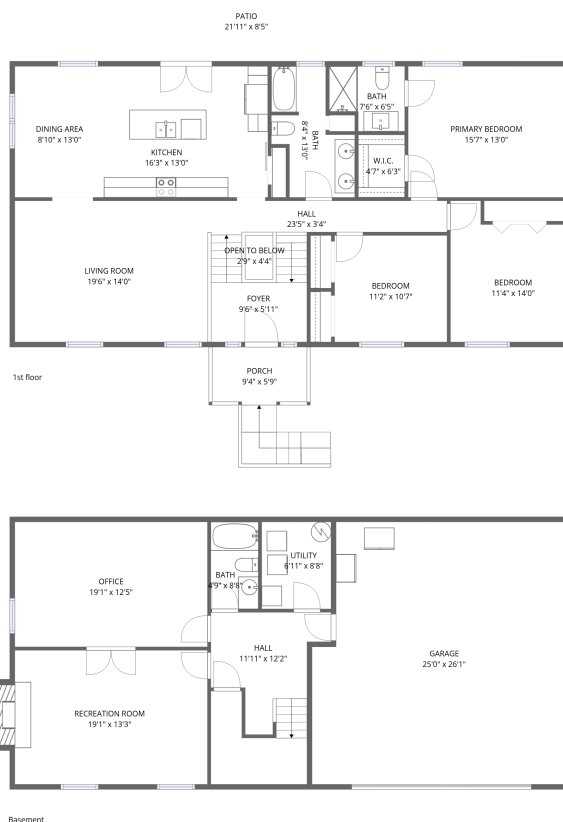


Home data report

**2738 Bobwhite Drive, Meadowlark, Cave Spring, Roanoke,
Roanoke County, Virginia, United States, 24018**



Total Area: 2270 sq. ft

Basement: 788 sq. ft, 1st Floor: 1482 sq. ft

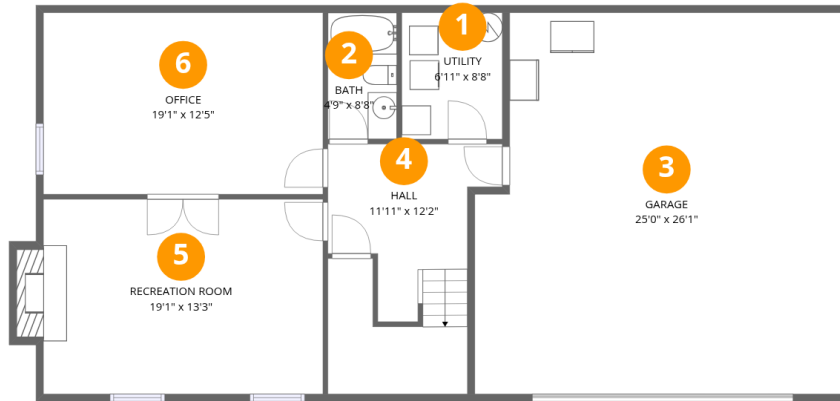
Excluded: Garage 624 sq. ft, Fireplace 13 sq. ft, Open to below 12 sq. ft, Patio 184 sq. ft,
Porch 52 sq. ft, Walls: 175 sq. ft

Property summary



Home data report

2738 Bobwhite Drive, Meadowlark, Cave Spring, Roanoke,
Roanoke County, Virginia, United States, 24018



Room dimensions

Floor 1 Below grade

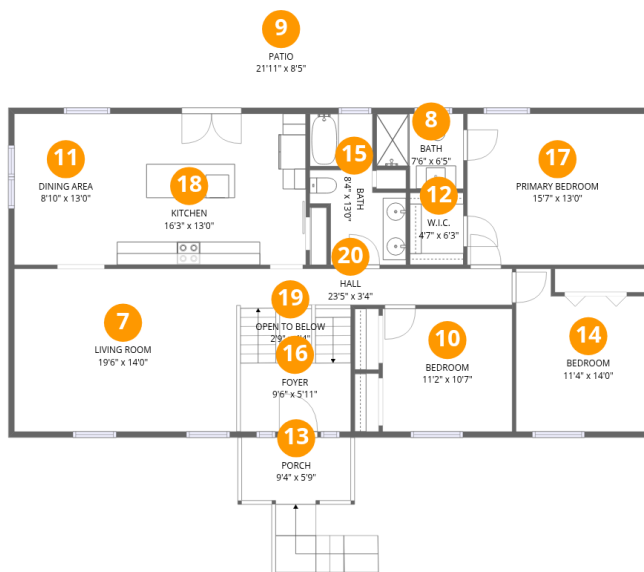
Total:788sqft

Excluded: 637sqft

#		Dimensions	sqft	Counted as living area
1	Utility	6'11" x 8'8"	59 sq. ft	Yes
2	Bath	4'9" x 8'8"	41 sq. ft	Yes
3	Garage	25'0" x 26'1"	652 sq. ft	No
4	Hall	11'11" x 12'2"	145 sq. ft	Yes
5	Recreation Room	19'1" x 13'3"	254 sq. ft	Yes
6	Office	19'1" x 12'5"	237 sq. ft	Yes

Home data report

2738 Bobwhite Drive, Meadowlark, Cave Spring, Roanoke, Roanoke County, Virginia, United States, 24018



Room dimensions

Floor 2

Total:1482sqft

Excluded: 248sqft

#		Dimensions	sqft	Counted as living area
7	Living Room	19'6" x 14'0"	273 sq. ft	Yes
8	Bath	7'6" x 6'5"	48 sq. ft	Yes
9	Patio	21'11" x 8'5"	184 sq. ft	No
10	Bedroom	11'2" x 10'7"	118 sq. ft	Yes
11	Dining Area	8'10" x 13'0"	115 sq. ft	Yes
12	W.I.C.	4'7" x 6'3"	29 sq. ft	Yes
13	Porch	9'4" x 5'9"	54 sq. ft	No
14	Bedroom	11'4" x 14'0"	159 sq. ft	Yes
15	Bath	8'4" x 13'0"	108 sq. ft	Yes
16	Foyer	9'6" x 5'11"	56 sq. ft	Yes
17	Primary Bedroom	15'7" x 13'0"	202 sq. ft	Yes

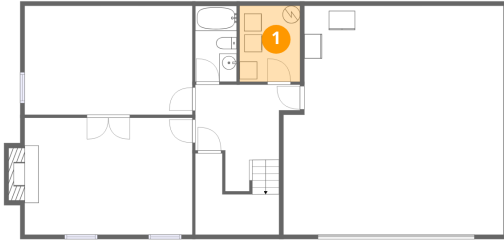
Home data report

**2738 Bobwhite Drive, Meadowlark, Cave Spring, Roanoke,
Roanoke County, Virginia, United States, 24018**

#		Dimensions	sqft	Counted as living area
18	Kitchen	16'3" x 13'0"	212 sq. ft	Yes
19	Open To Below	2'9" x 4'4"	12 sq. ft	No
20	Hall	23'5" x 3'4"	78 sq. ft	Yes

2738 Bobwhite Drive, Meadowlark, Cave Spring, Roanoke,
Roanoke County, Virginia, United States, 24018

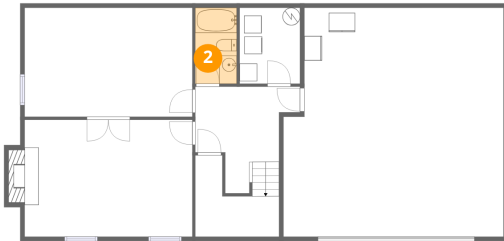
1 Floor 1 - Utility



Dimensions: 6'11" x 8'8"
Area: 59 sq. ft
Counted as living area: Yes

Heated: Yes
Finished: Yes
Enclosed: Yes
Contiguous: Yes
Permitted: Yes
Wet space: No
Addition: No
Conversion: No

2 Floor 1 - Bath

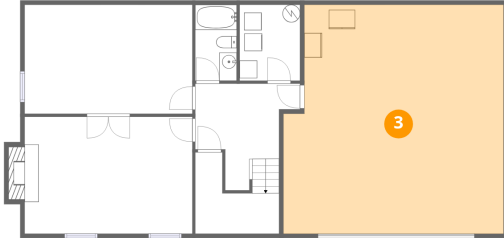


Dimensions: 4'9" x 8'8"
Area: 41 sq. ft
Counted as living area: Yes

Heated: Yes
Finished: Yes
Enclosed: Yes
Contiguous: Yes
Permitted: Yes
Wet space: Yes
Addition: No
Conversion: No

2738 Bobwhite Drive, Meadowlark, Cave Spring, Roanoke,
Roanoke County, Virginia, United States, 24018

3 Floor 1 - Garage



Dimensions: 25'0" x 26'1"
Area: 652 sq. ft
Counted as living area: No

Heated: No
Finished: No
Enclosed: Yes
Contiguous: Yes
Permitted: Yes
Wet space: No
Addition: No
Conversion: No

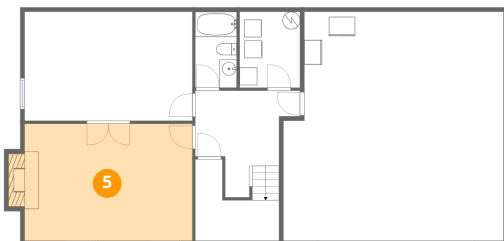
4 Floor 1 - Hall



Dimensions: 11'11" x 12'2"
Area: 145 sq. ft
Counted as living area: Yes

Heated: Yes
Finished: Yes
Enclosed: Yes
Contiguous: Yes
Permitted: Yes
Wet space: No
Addition: No
Conversion: No

5 Floor 1 - Recreation Room

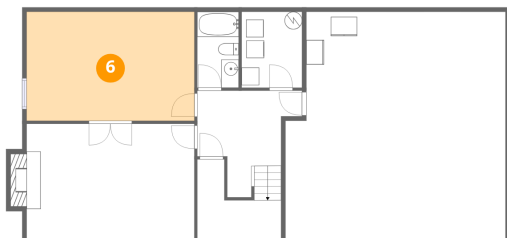


Dimensions: 19'1" x 13'3"
Area: 254 sq. ft
Counted as living area: Yes

Heated: Yes
Finished: Yes
Enclosed: Yes
Contiguous: Yes
Permitted: Yes
Wet space: No
Addition: No
Conversion: No

2738 Bobwhite Drive, Meadowlark, Cave Spring, Roanoke,
Roanoke County, Virginia, United States, 24018

6 Floor 1 - Office



Dimensions: 19'1" x 12'5"
Area: 237 sq. ft
Counted as living area: Yes

Heated: Yes
Finished: Yes
Enclosed: Yes
Contiguous: Yes
Permitted: Yes
Wet space: No
Addition: No
Conversion: No

7 Floor 2 - Living Room



Dimensions: 19'6" x 14'0"
Area: 273 sq. ft
Counted as living area: Yes

Heated: Yes
Finished: Yes
Enclosed: Yes
Contiguous: Yes
Permitted: Yes
Wet space: No
Addition: No
Conversion: No

8 Floor 2 - Bath



Dimensions: 7'6" x 6'5"
Area: 48 sq. ft
Counted as living area: Yes

Heated: Yes
Finished: Yes
Enclosed: Yes
Contiguous: Yes
Permitted: Yes
Wet space: Yes
Addition: No
Conversion: No

2738 Bobwhite Drive, Meadowlark, Cave Spring, Roanoke,
Roanoke County, Virginia, United States, 24018

9 Floor 2 - Patio



Dimensions: 21'11" x 8'5"
Area: 184 sq. ft
Counted as living area: No

Heated: No
Finished: No
Enclosed: No
Contiguous: Yes
Permitted: Yes
Wet space: No
Addition: No
Conversion: No

10 Floor 2 - Bedroom



Dimensions: 11'2" x 10'7"
Area: 118 sq. ft
Counted as living area: Yes

Heated: Yes
Finished: Yes
Enclosed: Yes
Contiguous: Yes
Permitted: Yes
Wet space: No
Addition: No
Conversion: No

11 Floor 2 - Dining Area



Dimensions: 8'10" x 13'0"
Area: 115 sq. ft
Counted as living area: Yes

Heated: Yes
Finished: Yes
Enclosed: Yes
Contiguous: Yes
Permitted: Yes
Wet space: No
Addition: No
Conversion: No

2738 Bobwhite Drive, Meadowlark, Cave Spring, Roanoke,
Roanoke County, Virginia, United States, 24018

12 Floor 2 - W.I.C.



Dimensions: 4'7" x 6'3"
Area: 29 sq. ft
Counted as living area: Yes

Heated: Yes
Finished: Yes
Enclosed: Yes
Contiguous: Yes
Permitted: Yes
Wet space: No
Addition: No
Conversion: No

13 Floor 2 - Porch



Dimensions: 9'4" x 5'9"
Area: 54 sq. ft
Counted as living area: No

Heated: No
Finished: No
Enclosed: No
Contiguous: Yes
Permitted: Yes
Wet space: No
Addition: No
Conversion: No

14 Floor 2 - Bedroom



Dimensions: 11'4" x 14'0"
Area: 159 sq. ft
Counted as living area: Yes

Heated: Yes
Finished: Yes
Enclosed: Yes
Contiguous: Yes
Permitted: Yes
Wet space: No
Addition: No
Conversion: No

2738 Bobwhite Drive, Meadowlark, Cave Spring, Roanoke,
Roanoke County, Virginia, United States, 24018

15 Floor 2 - Bath



Dimensions: 8'4" x 13'0"
Area: 108 sq. ft
Counted as living area: Yes

Heated: Yes
Finished: Yes
Enclosed: Yes
Contiguous: Yes
Permitted: Yes
Wet space: Yes
Addition: No
Conversion: No

16 Floor 2 - Foyer



Dimensions: 9'6" x 5'11"
Area: 56 sq. ft
Counted as living area: Yes

Heated: Yes
Finished: Yes
Enclosed: Yes
Contiguous: Yes
Permitted: Yes
Wet space: No
Addition: No
Conversion: No

17 Floor 2 - Primary Bedroom



Dimensions: 15'7" x 13'0"
Area: 202 sq. ft
Counted as living area: Yes

Heated: Yes
Finished: Yes
Enclosed: Yes
Contiguous: Yes
Permitted: Yes
Wet space: No
Addition: No
Conversion: No

2738 Bobwhite Drive, Meadowlark, Cave Spring, Roanoke,
Roanoke County, Virginia, United States, 24018

18 Floor 2 - Kitchen



Dimensions: 16'3" x 13'0"
Area: 212 sq. ft
Counted as living area: Yes

Heated: Yes
Finished: Yes
Enclosed: Yes
Contiguous: Yes
Permitted: Yes
Wet space: No
Addition: No
Conversion: No

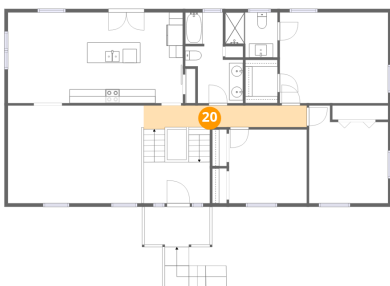
19 Floor 2 - Open To Below



Dimensions: 2'9" x 4'4"
Area: 12 sq. ft
Counted as living area: No

Heated: No
Finished: No
Enclosed: No
Contiguous: Yes
Permitted: No
Wet space: No
Addition: No
Conversion: No

20 Floor 2 - Hall



Dimensions: 23'5" x 3'4"
Area: 78 sq. ft
Counted as living area: Yes

Heated: Yes
Finished: Yes
Enclosed: Yes
Contiguous: Yes
Permitted: Yes
Wet space: No
Addition: No
Conversion: No