

Home data report

373 Hatfield Crescent, Queenswood Heights, Orléans, Ontario, Canada, K1E 1M6



Total Area: 1488 sq. ft

Basement: 0 sq. ft, 1st Floor: 486 sq. ft, 2nd Floor: 531 sq. ft, 3rd Floor: 471 sq. ft

Excluded: Utility 521 sq. ft, Embedded window 18 sq. ft, Walls: 210 sq. ft

Property summary

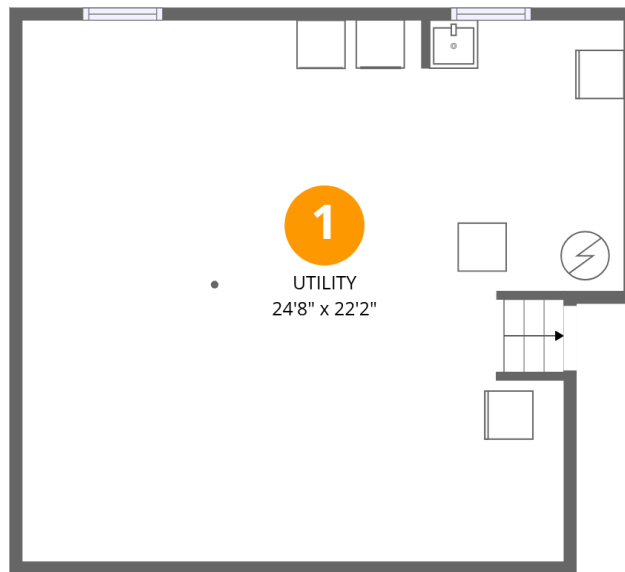
 **4** Floors

 **3** Bedrooms

 **2** Bathrooms

Home data report

373 Hatfield Crescent, Queenswood Heights, Orléans, Ontario, Canada, K1E 1M6



Room dimensions

Floor 1 Below grade

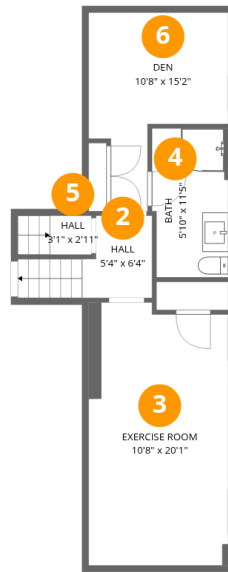
Total:0sqft

Excluded: 521sqft

#		Dimensions	sqft	Counted as living area
1	Utility	24'8" x 22'2"	548 sq. ft	No

Home data report

373 Hatfield Crescent, Queenswood Heights, Orléans, Ontario, Canada, K1E 1M6



Room dimensions

Floor 2

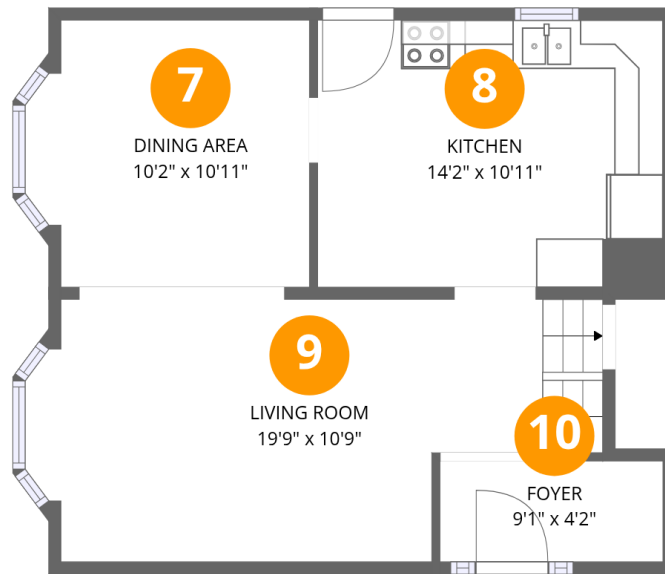
Total:486sqft

Excluded: 0sqft

#		Dimensions	sqft	Counted as living area
2	Hall	5'4" x 6'4"	34 sq. ft	Yes
3	Exercise Room	10'8" x 20'1"	215 sq. ft	Yes
4	Bath	5'10" x 11'5"	67 sq. ft	Yes
5	Hall	3'1" x 2'11"	9 sq. ft	Yes
6	Den	10'8" x 15'2"	162 sq. ft	Yes

Home data report

373 Hatfield Crescent, Queenswood Heights, Orléans, Ontario, Canada, K1E 1M6



Room dimensions

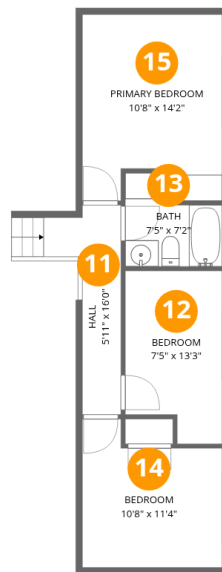
Floor 3

Total:531sqft Excluded: 18sqft

#		Dimensions	sqft	Counted as living area
7	Dining Area	10'2" x 10'11"	112 sq. ft	Yes
8	Kitchen	14'2" x 10'11"	155 sq. ft	Yes
9	Living Room	19'9" x 10'9"	212 sq. ft	Yes
10	Foyer	9'1" x 4'2"	38 sq. ft	Yes

Home data report

373 Hatfield Crescent, Queenswood Heights, Orléans, Ontario, Canada, K1E 1M6



Room dimensions

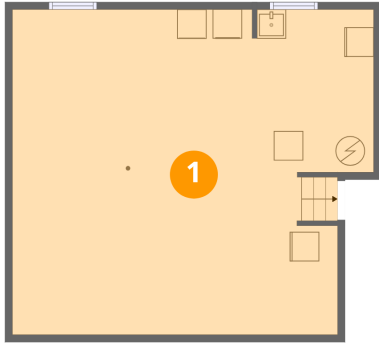
Floor 4

Total:471sqft Excluded: 0sqft

#		Dimensions	sqft	Counted as living area
11	Hall	5'11" x 16'0"	94 sq. ft	Yes
12	Bedroom	7'5" x 13'3"	98 sq. ft	Yes
13	Bath	7'5" x 7'2"	53 sq. ft	Yes
14	Bedroom	10'8" x 11'4"	121 sq. ft	Yes
15	Primary Bedroom	10'8" x 14'2"	152 sq. ft	Yes

373 Hatfield Crescent, Queenswood Heights, Orléans, Ontario,
Canada, K1E 1M6

1 Floor 1 - Utility



Dimensions: 24'8" x 22'2"
Area: 548 sq. ft
Counted as living area: No

Heated: Yes
Finished: No
Enclosed: Yes
Contiguous: Yes
Permitted: Yes
Wet space: No
Addition: No
Conversion: No

2 Floor 2 - Hall



Dimensions: 5'4" x 6'4"
Area: 34 sq. ft
Counted as living area: Yes

Heated: Yes
Finished: Yes
Enclosed: Yes
Contiguous: Yes
Permitted: Yes
Wet space: No
Addition: No
Conversion: No

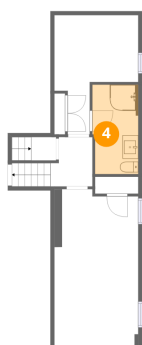
3 Floor 2 - Exercise Room



Dimensions: 10'8" x 20'1"
Area: 215 sq. ft
Counted as living area: Yes

Heated: Yes
Finished: Yes
Enclosed: Yes
Contiguous: Yes
Permitted: Yes
Wet space: No
Addition: No
Conversion: No

4 Floor 2 - Bath



Dimensions: 5'10" x 11'5"
Area: 67 sq. ft
Counted as living area: Yes

Heated: Yes
Finished: Yes
Enclosed: Yes
Contiguous: Yes
Permitted: Yes
Wet space: Yes
Addition: No
Conversion: No

5 Floor 2 - Hall



Dimensions: 3'1" x 2'11"
Area: 9 sq. ft
Counted as living area: Yes

Heated: Yes
Finished: Yes
Enclosed: Yes
Contiguous: Yes
Permitted: Yes
Wet space: No
Addition: No
Conversion: No

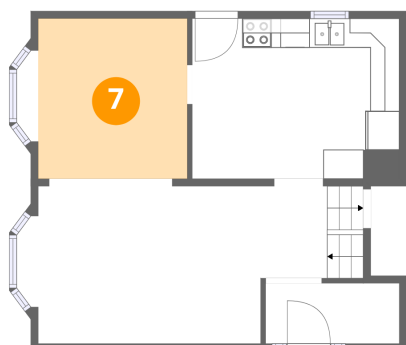
6 Floor 2 - Den



Dimensions: 10'8" x 15'2"
Area: 162 sq. ft
Counted as living area: Yes

Heated: Yes
Finished: Yes
Enclosed: Yes
Contiguous: Yes
Permitted: Yes
Wet space: No
Addition: No
Conversion: No

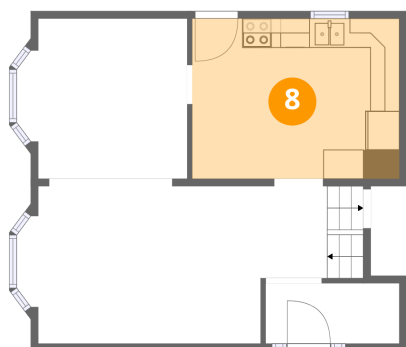
7 Floor 3 - Dining Area



Dimensions: 10'2" x 10'11"
Area: 112 sq. ft
Counted as living area: Yes

Heated: Yes
Finished: Yes
Enclosed: Yes
Contiguous: Yes
Permitted: Yes
Wet space: No
Addition: No
Conversion: No

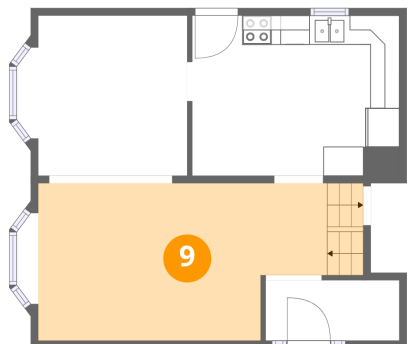
8 Floor 3 - Kitchen



Dimensions: 14'2" x 10'11"
Area: 155 sq. ft
Counted as living area: Yes

Heated: Yes
Finished: Yes
Enclosed: Yes
Contiguous: Yes
Permitted: Yes
Wet space: No
Addition: No
Conversion: No

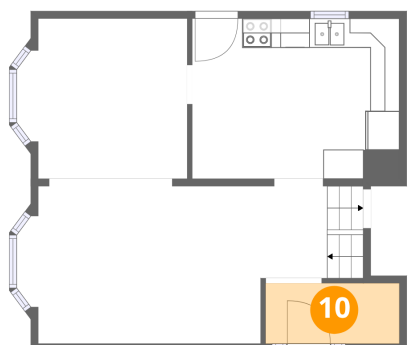
9 Floor 3 - Living Room



Dimensions: 19'9" x 10'9"
Area: 212 sq. ft
Counted as living area: Yes

Heated: Yes
Finished: Yes
Enclosed: Yes
Contiguous: Yes
Permitted: Yes
Wet space: No
Addition: No
Conversion: No

10 Floor 3 - Foyer



Dimensions: 9'1" x 4'2"
Area: 38 sq. ft
Counted as living area: Yes

Heated: Yes
Finished: Yes
Enclosed: Yes
Contiguous: Yes
Permitted: Yes
Wet space: No
Addition: No
Conversion: No

11 Floor 4 - Hall



Dimensions: 5'11" x 16'0"
Area: 94 sq. ft
Counted as living area: Yes

Heated: Yes
Finished: Yes
Enclosed: Yes
Contiguous: Yes
Permitted: Yes
Wet space: No
Addition: No
Conversion: No

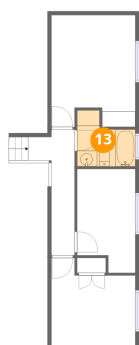
12 Floor 4 - Bedroom



Dimensions: 7'5" x 13'3"
Area: 98 sq. ft
Counted as living area: Yes

Heated: Yes
Finished: Yes
Enclosed: Yes
Contiguous: Yes
Permitted: Yes
Wet space: No
Addition: No
Conversion: No

13 Floor 4 - Bath



Dimensions: 7'5" x 7'2"
Area: 53 sq. ft
Counted as living area: Yes

Heated: Yes
Finished: Yes
Enclosed: Yes
Contiguous: Yes
Permitted: Yes
Wet space: Yes
Addition: No
Conversion: No

14 Floor 4 - Bedroom



Dimensions: 10'8" x 11'4"
Area: 121 sq. ft
Counted as living area: Yes

Heated: Yes
Finished: Yes
Enclosed: Yes
Contiguous: Yes
Permitted: Yes
Wet space: No
Addition: No
Conversion: No

373 Hatfield Crescent, Queenswood Heights, Orléans, Ontario,
Canada, K1E 1M6

15 Floor 4 - Primary Bedroom



Dimensions: 10'8" x 14'2"
Area: 152 sq. ft
Counted as living area: Yes

Heated: Yes
Finished: Yes
Enclosed: Yes
Contiguous: Yes
Permitted: Yes
Wet space: No
Addition: No
Conversion: No