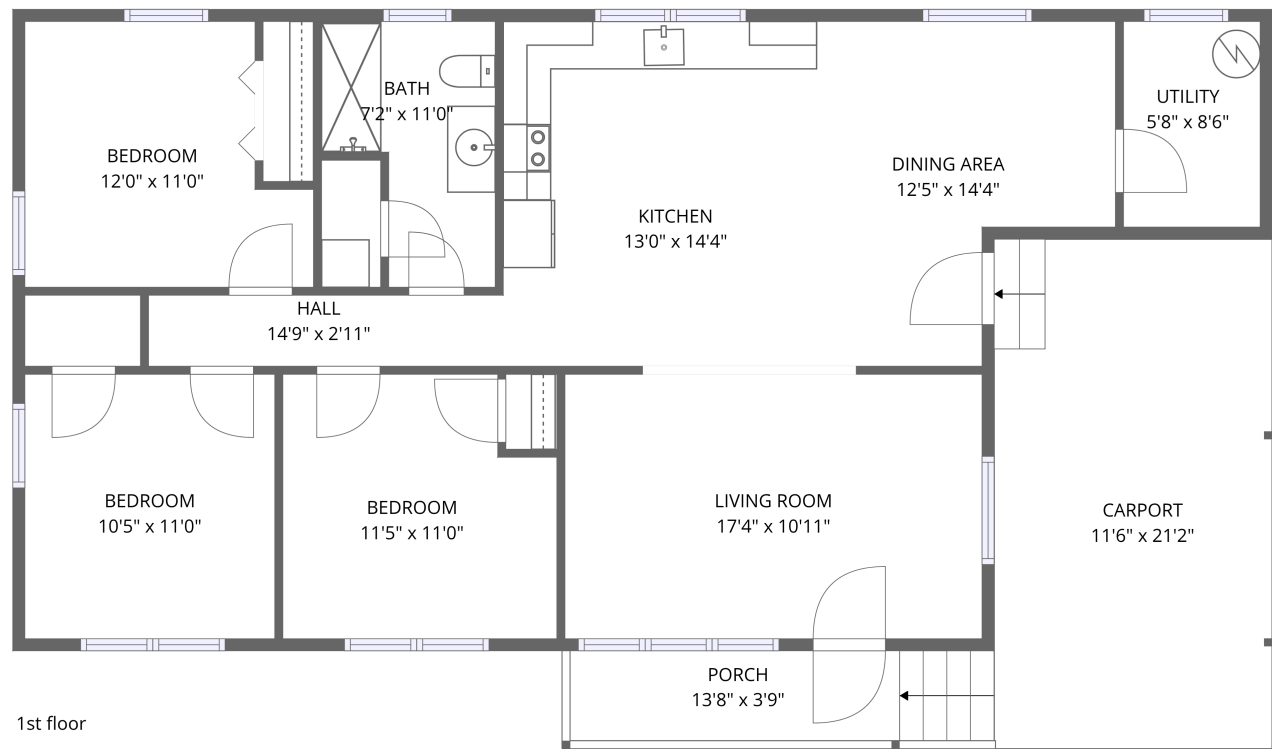


476 Cedar Ridge Drive, Union Grove, Alabama 35175, United States




Total Area: 1118 sq. ft

1st Floor: 1118 sq. ft

Excluded: Porch 51 sq. ft, Carport 244 sq. ft, Walls: 78 sq. ft

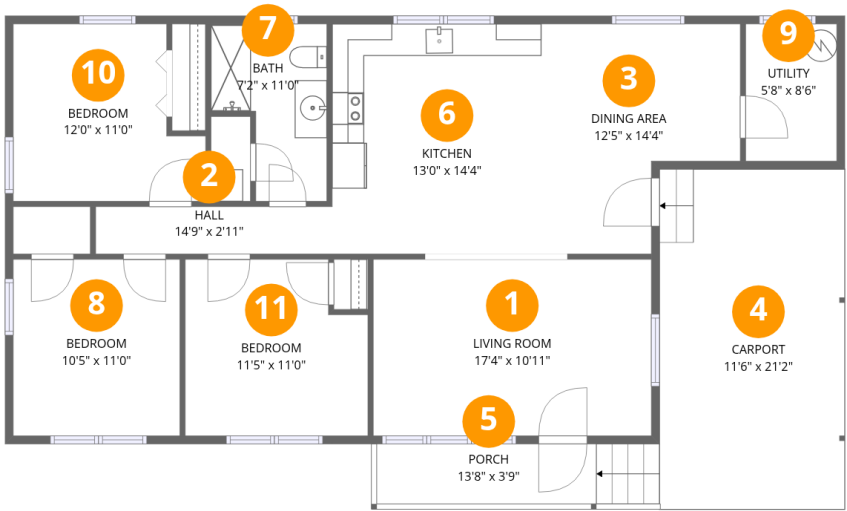
Property summary

 1 Floors

 3 Bedrooms

 1 Bathrooms

476 Cedar Ridge Drive, Union Grove, Alabama 35175, United States



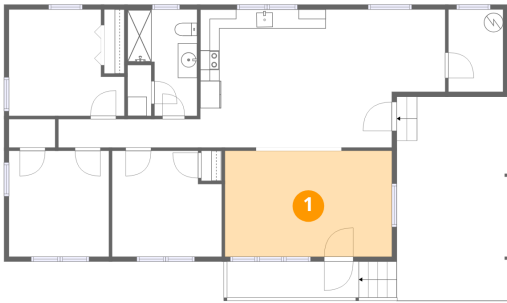
Room dimensions

Floor 1 Total:1118sqft Excluded: 295sqft

#		Dimensions	sqft	Counted as living area
1	Living Room	17'4" x 10'11"	190 sq. ft	Yes
2	Hall	14'9" x 2'11"	43 sq. ft	Yes
3	Dining Area	12'5" x 14'4"	178 sq. ft	Yes
4	Carport	11'6" x 21'2"	243 sq. ft	No
5	Porch	13'8" x 3'9"	51 sq. ft	No
6	Kitchen	13'0" x 14'4"	187 sq. ft	Yes
7	Bath	7'2" x 11'0"	80 sq. ft	Yes
8	Bedroom	10'5" x 11'0"	114 sq. ft	Yes
9	Utility	5'8" x 8'6"	48 sq. ft	Yes
10	Bedroom	12'0" x 11'0"	132 sq. ft	Yes
11	Bedroom	11'5" x 11'0"	125 sq. ft	Yes

476 Cedar Ridge Drive, Union Grove, Alabama 35175, United States

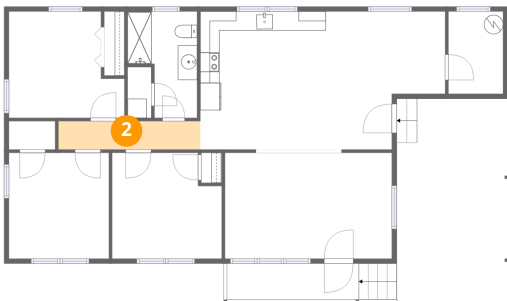
1 Floor 1 - Living Room



Dimensions: 17'4" x 10'11"
Area: 190 sq. ft
Counted as living area: Yes

Heated: Yes
Finished: Yes
Enclosed: Yes
Contiguous: Yes
Permitted: Yes
Wet space: No
Addition: No
Conversion: No

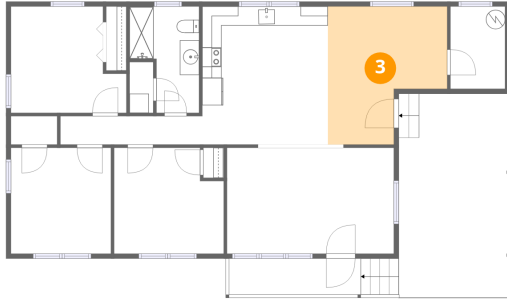
2 Floor 1 - Hall



Dimensions: 14'9" x 2'11"
Area: 43 sq. ft
Counted as living area: Yes

Heated: Yes
Finished: Yes
Enclosed: Yes
Contiguous: Yes
Permitted: Yes
Wet space: No
Addition: No
Conversion: No

3 Floor 1 - Dining Area



Dimensions: 12'5" x 14'4"
Area: 178 sq. ft
Counted as living area: Yes

Heated: Yes
Finished: Yes
Enclosed: Yes
Contiguous: Yes
Permitted: Yes
Wet space: No
Addition: No
Conversion: No

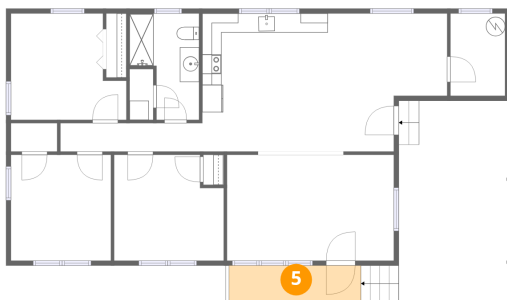
4 Floor 1 - Carport



Dimensions: 11'6" x 21'2"
Area: 243 sq. ft
Counted as living area: No

Heated: No
Finished: Yes
Enclosed: No
Contiguous: Yes
Permitted: Yes
Wet space: No
Addition: No
Conversion: No

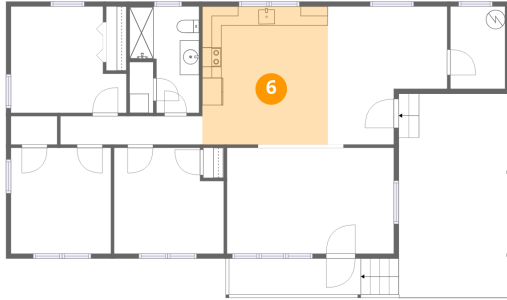
5 Floor 1 - Porch



Dimensions: 13'8" x 3'9"
Area: 51 sq. ft
Counted as living area: No

Heated: No
Finished: No
Enclosed: No
Contiguous: Yes
Permitted: Yes
Wet space: No
Addition: No
Conversion: No

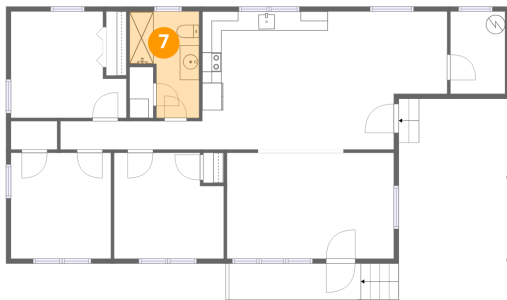
6 Floor 1 - Kitchen



Dimensions: 13'0" x 14'4"
Area: 187 sq. ft
Counted as living area: Yes

Heated: Yes
Finished: Yes
Enclosed: Yes
Contiguous: Yes
Permitted: Yes
Wet space: No
Addition: No
Conversion: No

7 Floor 1 - Bath



Dimensions: 7'2" x 11'0"
Area: 80 sq. ft
Counted as living area: Yes

Heated: Yes
Finished: Yes
Enclosed: Yes
Contiguous: Yes
Permitted: Yes
Wet space: Yes
Addition: No
Conversion: No

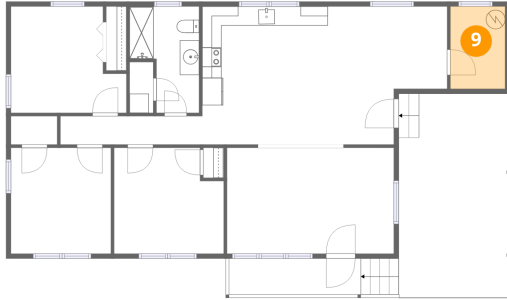
8 Floor 1 - Bedroom



Dimensions: 10'5" x 11'0"
Area: 114 sq. ft
Counted as living area: Yes

Heated: Yes
Finished: Yes
Enclosed: Yes
Contiguous: Yes
Permitted: Yes
Wet space: No
Addition: No
Conversion: No

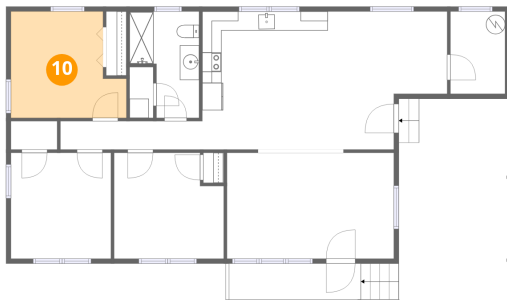
9 Floor 1 - Utility



Dimensions: 5'8" x 8'6"
Area: 48 sq. ft
Counted as living area: Yes

Heated: Yes
Finished: Yes
Enclosed: Yes
Contiguous: Yes
Permitted: Yes
Wet space: No
Addition: No
Conversion: No

10 Floor 1 - Bedroom



Dimensions: 12'0" x 11'0"
Area: 132 sq. ft
Counted as living area: Yes

Heated: Yes
Finished: Yes
Enclosed: Yes
Contiguous: Yes
Permitted: Yes
Wet space: No
Addition: No
Conversion: No

11 Floor 1 - Bedroom



Dimensions: 11'5" x 11'0"
Area: 125 sq. ft
Counted as living area: Yes

Heated: Yes
Finished: Yes
Enclosed: Yes
Contiguous: Yes
Permitted: Yes
Wet space: No
Addition: No
Conversion: No