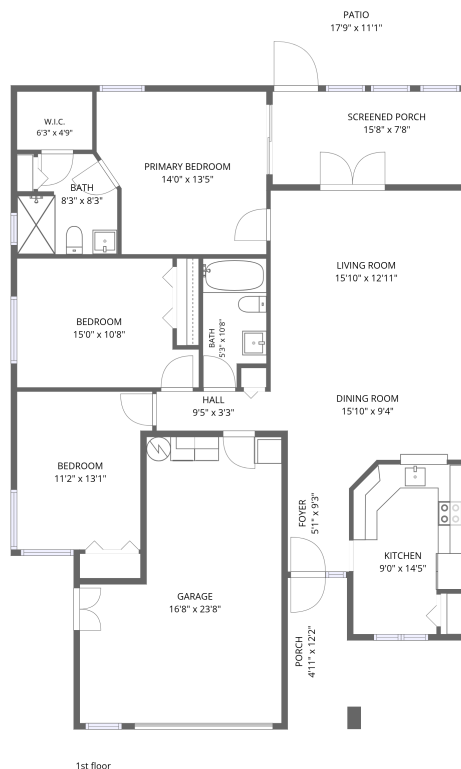


Home data report

11614 Rose Tree Drive, Summertree, New Port Richey, Pasco County, Florida, United States, 34654



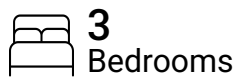
Total Area: 1223 sq. ft

1st Floor: 1223 sq. ft

Excluded: Garage 327 sq. ft, Screened porch 120 sq. ft, Porch 60 sq. ft, Patio 198 sq. ft,

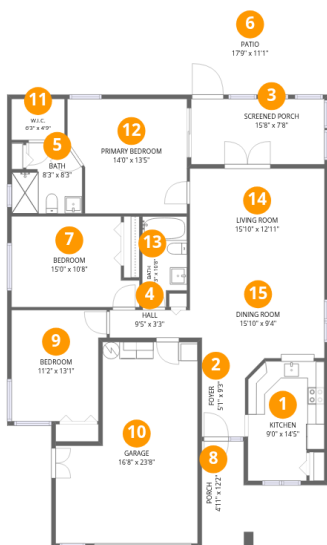
Walls: 127 sq. ft

Property summary



Home data report

11614 Rose Tree Drive, Summertree, New Port Richey, Pasco County, Florida, United States, 34654



Room dimensions

Floor 1

Total:1223sqft Excluded: 705sqft

#		Dimensions	sqft	Counted as living area
1	Kitchen	9'0" x 14'5"	117 sq. ft	Yes
2	Foyer	5'1" x 9'3"	50 sq. ft	Yes
3	Screened Porch	15'8" x 7'8"	120 sq. ft	No
4	Hall	9'5" x 3'3"	31 sq. ft	Yes
5	Bath	8'3" x 8'3"	59 sq. ft	Yes
6	Patio	17'9" x 11'1"	198 sq. ft	No
7	Bedroom	15'0" x 10'8"	144 sq. ft	Yes
8	Porch	4'11" x 12'2"	60 sq. ft	No
9	Bedroom	11'2" x 13'1"	136 sq. ft	Yes
10	Garage	16'8" x 23'8"	327 sq. ft	No
11	W.I.C.	6'3" x 4'9"	30 sq. ft	Yes

Home data report

**11614 Rose Tree Drive, Summertree, New Port Richey, Pasco
County, Florida, United States, 34654**

#		Dimensions	sqft	Counted as living area
12	Primary Bedroom	14'0" x 13'5"	174 sq. ft	Yes
13	Bath	5'3" x 10'8"	51 sq. ft	Yes
14	Living Room	15'10" x 12'11"	204 sq. ft	Yes
15	Dining Room	15'10" x 9'4"	144 sq. ft	Yes

11614 Rose Tree Drive, Summertree, New Port Richey, Pasco County, Florida, United States, 34654

1 Floor 1 - Kitchen



Dimensions: 9'0" x 14'5"
Area: 117 sq. ft
Counted as living area: Yes

Heated: Yes
Finished: Yes
Enclosed: Yes
Contiguous: Yes
Permitted: Yes
Wet space: No
Addition: No
Conversion: No

2 Floor 1 - Foyer



Dimensions: 5'1" x 9'3"
Area: 50 sq. ft
Counted as living area: Yes

Heated: Yes
Finished: Yes
Enclosed: Yes
Contiguous: Yes
Permitted: Yes
Wet space: No
Addition: No
Conversion: No

11614 Rose Tree Drive, Summertree, New Port Richey, Pasco County, Florida, United States, 34654

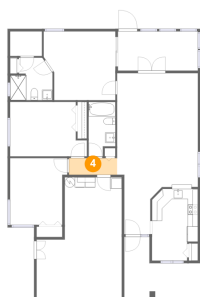
3 Floor 1 - Screened Porch



Dimensions: 15'8" x 7'8"
Area: 120 sq. ft
Counted as living area: No

Heated: No
Finished: No
Enclosed: No
Contiguous: Yes
Permitted: Yes
Wet space: No
Addition: No
Conversion: No

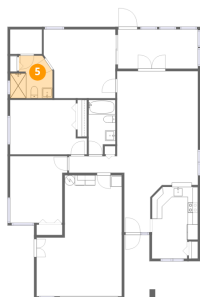
4 Floor 1 - Hall



Dimensions: 9'5" x 3'3"
Area: 31 sq. ft
Counted as living area: Yes

Heated: Yes
Finished: Yes
Enclosed: Yes
Contiguous: Yes
Permitted: Yes
Wet space: No
Addition: No
Conversion: No

5 Floor 1 - Bath

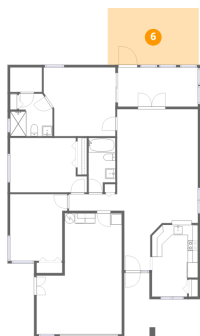


Dimensions: 8'3" x 8'3"
Area: 59 sq. ft
Counted as living area: Yes

Heated: Yes
Finished: Yes
Enclosed: Yes
Contiguous: Yes
Permitted: Yes
Wet space: Yes
Addition: No
Conversion: No

11614 Rose Tree Drive, Summertree, New Port Richey, Pasco County, Florida, United States, 34654

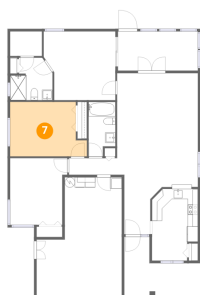
6 Floor 1 - Patio



Dimensions: 17'9" x 11'1"
Area: 198 sq. ft
Counted as living area: No

Heated: No
Finished: No
Enclosed: No
Contiguous: Yes
Permitted: Yes
Wet space: No
Addition: No
Conversion: No

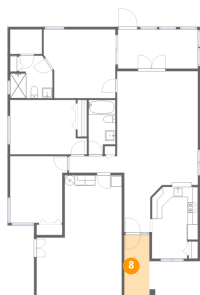
7 Floor 1 - Bedroom



Dimensions: 15'0" x 10'8"
Area: 144 sq. ft
Counted as living area: Yes

Heated: Yes
Finished: Yes
Enclosed: Yes
Contiguous: Yes
Permitted: Yes
Wet space: No
Addition: No
Conversion: No

8 Floor 1 - Porch

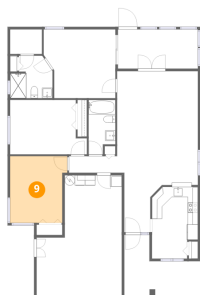


Dimensions: 4'11" x 12'2"
Area: 60 sq. ft
Counted as living area: No

Heated: No
Finished: No
Enclosed: No
Contiguous: Yes
Permitted: Yes
Wet space: No
Addition: No
Conversion: No

11614 Rose Tree Drive, Summertree, New Port Richey, Pasco County, Florida, United States, 34654

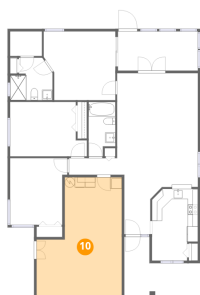
9 Floor 1 - Bedroom



Dimensions: 11'2" x 13'1"
Area: 136 sq. ft
Counted as living area: Yes

Heated: Yes
Finished: Yes
Enclosed: Yes
Contiguous: Yes
Permitted: Yes
Wet space: No
Addition: No
Conversion: No

10 Floor 1 - Garage



Dimensions: 16'8" x 23'8"
Area: 327 sq. ft
Counted as living area: No

Heated: No
Finished: No
Enclosed: Yes
Contiguous: Yes
Permitted: Yes
Wet space: No
Addition: No
Conversion: No

11 Floor 1 - W.I.C.

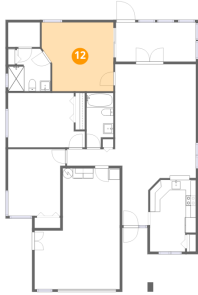


Dimensions: 6'3" x 4'9"
Area: 30 sq. ft
Counted as living area: Yes

Heated: Yes
Finished: Yes
Enclosed: Yes
Contiguous: Yes
Permitted: Yes
Wet space: No
Addition: No
Conversion: No

11614 Rose Tree Drive, Summertree, New Port Richey, Pasco County, Florida, United States, 34654

12 Floor 1 - Primary Bedroom



Dimensions: 14'0" x 13'5"
Area: 174 sq. ft
Counted as living area: Yes

Heated: Yes
Finished: Yes
Enclosed: Yes
Contiguous: Yes
Permitted: Yes
Wet space: No
Addition: No
Conversion: No

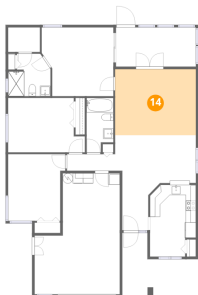
13 Floor 1 - Bath



Dimensions: 5'3" x 10'8"
Area: 51 sq. ft
Counted as living area: Yes

Heated: Yes
Finished: Yes
Enclosed: Yes
Contiguous: Yes
Permitted: Yes
Wet space: Yes
Addition: No
Conversion: No

14 Floor 1 - Living Room



Dimensions: 15'10" x 12'11"
Area: 204 sq. ft
Counted as living area: Yes

Heated: Yes
Finished: Yes
Enclosed: Yes
Contiguous: Yes
Permitted: Yes
Wet space: No
Addition: No
Conversion: No

Home data report

**11614 Rose Tree Drive, Summertree, New Port Richey, Pasco
County, Florida, United States, 34654**

15 Floor 1 - Dining Room



Dimensions: 15'10" x 9'4"
Area: 144 sq. ft
Counted as living area: Yes

Heated: Yes
Finished: Yes
Enclosed: Yes
Contiguous: Yes
Permitted: Yes
Wet space: No
Addition: No
Conversion: No