

24033 106 Ave

Maple Ridge BC V2W 2B1

Lower Level Area: 1,182 SQ.FT.
Main Level Area: 1,182 SQ.FT.
Upper Level Area: 1,175 SQ.FT.
Total Area 3,539 SQ.FT.
Garage Area: 431 SQ.FT.
Total Combined Area: 3,846 SQ.FT.

5



BEDROOMS

4

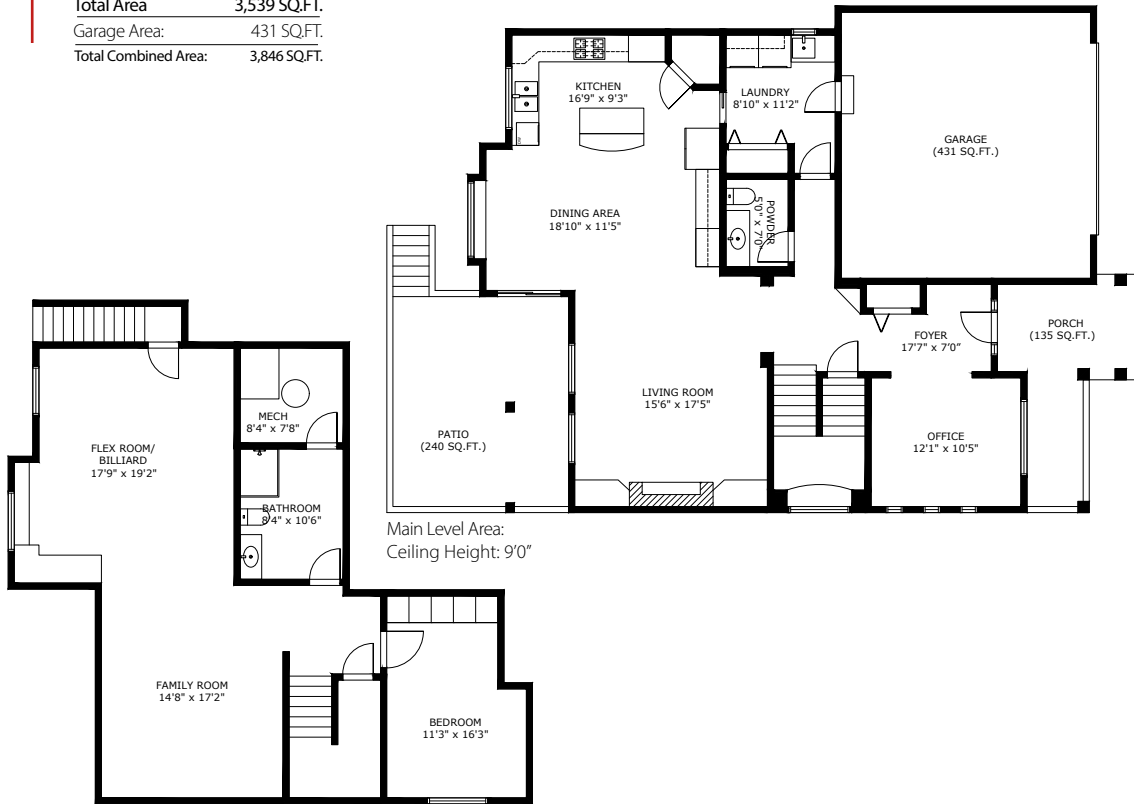


BATHROOMS

3,539

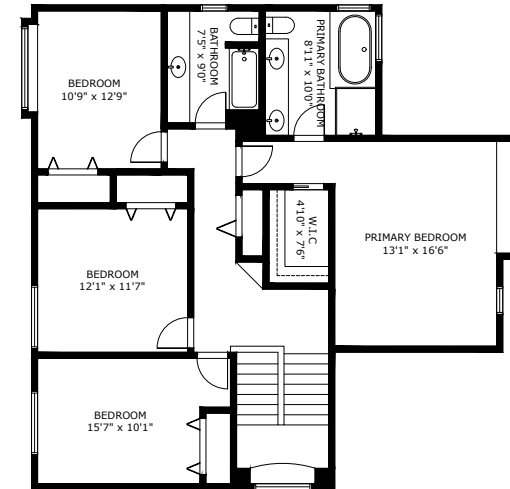


TOTAL SQ.FT.



Main Level Area:
Ceiling Height: 9'0"

Lower Level Area:
Ceiling Height: 7'8"



Upper Level Area:
Ceiling Height: 8'0"

24033 106 Avenue Maple Ridge, BC V2W 2B1

Measurements are approximate and may not be to scale. Gross measurements provided by agent.
The floor plan illustration is not suitable for construction/architectural purposes.
This communication is not intended to cause or induce breach of an existing agency agreement

3D IMMERSIVE
Tours Photos Floor Plans

Professionally measured by 3D Immersive Marketing Ltd.
Lead Floor Planner: *Simon Alexander*
Quality Assurance: *Denise Graham*