

# Home data report

## 1462 Mulberry Ln, St. Joseph, MI, US



**Total Area: 3729 sq. ft**

Basement: 1165 sq. ft, 1st Floor: 1461 sq. ft, 2nd Floor: 1103 sq. ft

Excluded: Basement 294 sq. ft, Garage 484 sq. ft, Deck 548 sq. ft, Fireplace 15 sq. ft, Embedded window 10 sq. ft, Walls: 278 sq. ft

### Property summary

 **3** Floors

 **4** Bedrooms

 **2** Bathrooms

Home data report

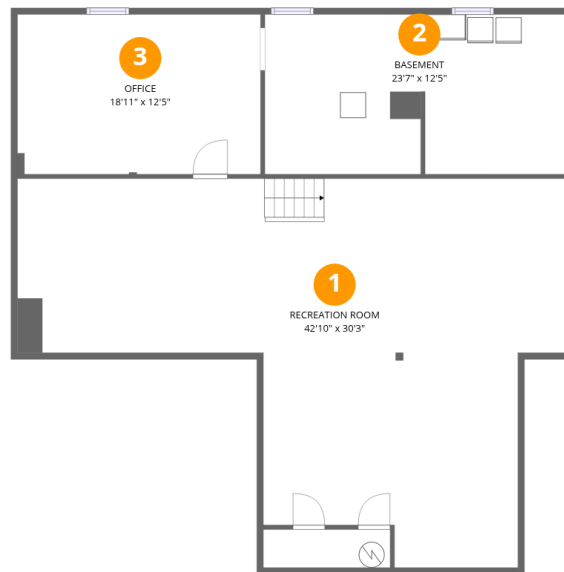
**1462 Mulberry Ln, St. Joseph, MI, US**

 **1**  
Half baths

 **1**  
Garages

Home data report

1462 Mulberry Ln, St. Joseph, MI, US



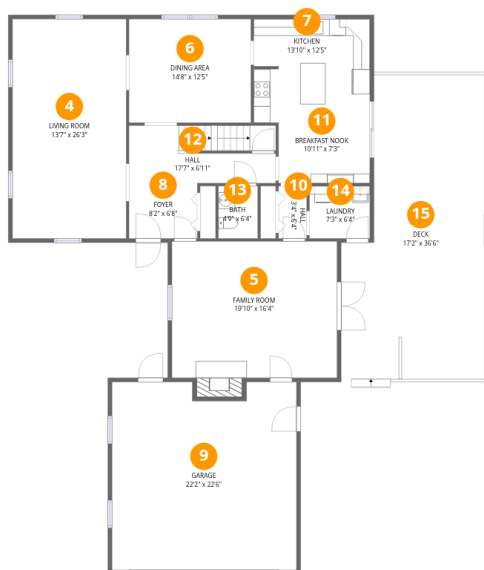
## Room dimensions

Floor 1 Below grade

Total: 1165sqft

Excluded: 294sqft

#		Dimensions	sqft	Counted as living area
1	Recreation Room	42'10" x 30'3"	1296 sq. ft	Yes
2	Basement	23'7" x 12'5"	292 sq. ft	No
3	Office	18'11" x 12'5"	235 sq. ft	Yes



## Room dimensions

Floor 2

Total: 1461 sqft

Excluded: 1047 sqft

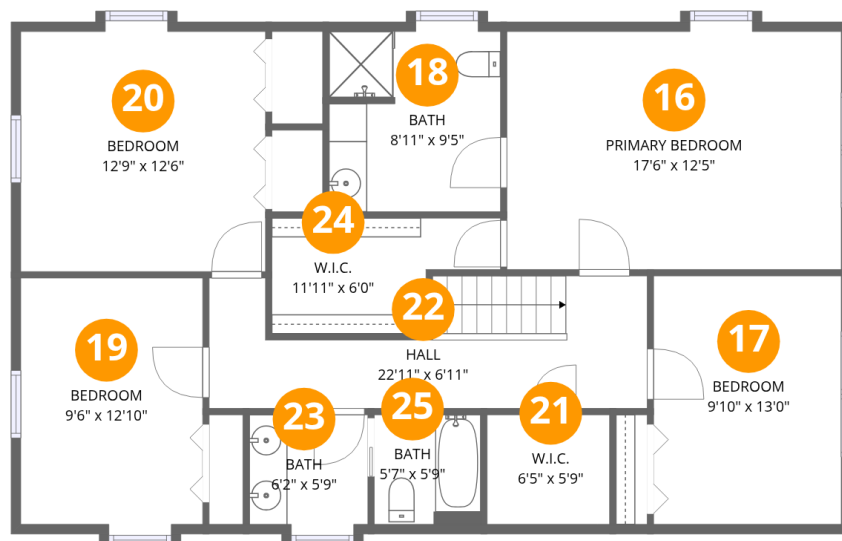
#		Dimensions	sqft	Counted as living area
4	Living Room	13'7" x 26'3"	358 sq. ft	Yes
5	Family Room	19'10" x 16'4"	324 sq. ft	Yes
6	Dining Area	14'8" x 12'5"	182 sq. ft	Yes
7	Kitchen	13'10" x 12'5"	172 sq. ft	Yes
8	Foyer	8'2" x 6'8"	54 sq. ft	Yes
9	Garage	22'2" x 22'6"	499 sq. ft	No
10	Hall	3'4" x 6'4"	21 sq. ft	Yes
11	Breakfast Nook	10'11" x 7'3"	79 sq. ft	Yes
12	Hall	17'7" x 6'11"	122 sq. ft	Yes
13	Bath	4'9" x 6'4"	30 sq. ft	Yes
14	Laundry	7'3" x 6'4"	46 sq. ft	Yes

Home data report

**1462 Mulberry Ln, St. Joseph, MI, US**

#		Dimensions	sqft	Counted as living area
15	Deck	17'2" x 36'6"	627 sq. ft	No

# 1462 Mulberry Ln, St. Joseph, MI, US



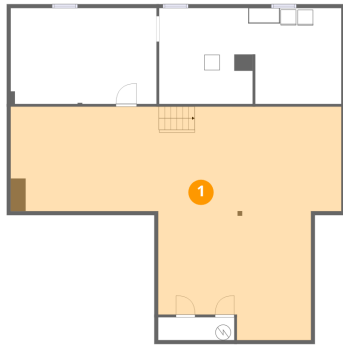
## Room dimensions

Floor 3

Total: 1103 sqft Excluded: 10 sqft

#		Dimensions	sqft	Counted as living area
16	Primary Bedroom	17'6" x 12'5"	217 sq. ft	Yes
17	Bedroom	9'10" x 13'0"	127 sq. ft	Yes
18	Bath	8'11" x 9'5"	84 sq. ft	Yes
19	Bedroom	9'6" x 12'10"	122 sq. ft	Yes
20	Bedroom	12'9" x 12'6"	159 sq. ft	Yes
21	W.I.C.	6'5" x 5'9"	37 sq. ft	Yes
22	Hall	22'11" x 6'11"	158 sq. ft	Yes
23	Bath	6'2" x 5'9"	35 sq. ft	Yes
24	W.I.C.	11'11" x 6'0"	72 sq. ft	Yes
25	Bath	5'7" x 5'9"	32 sq. ft	Yes

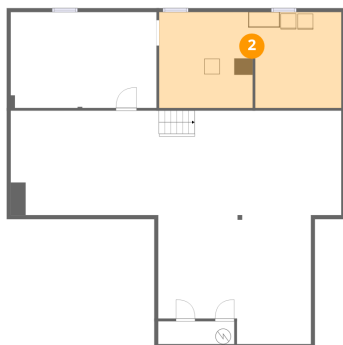
## 1 Floor 1 - Recreation Room



Dimensions: 42'10" x 30'3"  
Area: 1296 sq. ft  
Counted as living area: Yes

Heated: Yes  
Finished: Yes  
Enclosed: Yes  
Contiguous: Yes  
Permitted: Yes  
Wet space: No  
Addition: No  
Conversion: No

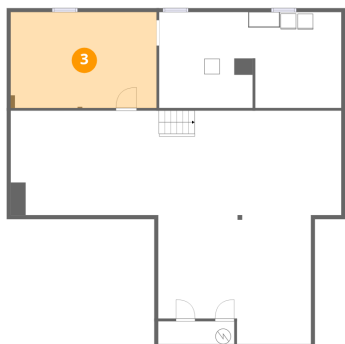
## 2 Floor 1 - Basement



Dimensions: 23'7" x 12'5"  
Area: 292 sq. ft  
Counted as living area: No

Heated: Yes  
Finished: No  
Enclosed: Yes  
Contiguous: Yes  
Permitted: Yes  
Wet space: No  
Addition: No  
Conversion: No

### 3 Floor 1 - Office



Dimensions: 18'11" x 12'5"  
Area: 235 sq. ft  
Counted as living area: Yes

Heated: Yes  
Finished: Yes  
Enclosed: Yes  
Contiguous: Yes  
Permitted: Yes  
Wet space: No  
Addition: No  
Conversion: No

### 4 Floor 2 - Living Room



Dimensions: 13'7" x 26'3"  
Area: 358 sq. ft  
Counted as living area: Yes

Heated: Yes  
Finished: Yes  
Enclosed: Yes  
Contiguous: Yes  
Permitted: Yes  
Wet space: No  
Addition: No  
Conversion: No

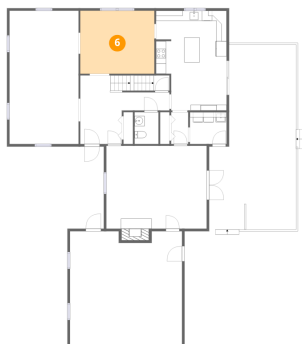
### 5 Floor 2 - Family Room



Dimensions: 19'10" x 16'4"  
Area: 324 sq. ft  
Counted as living area: Yes

Heated: Yes  
Finished: Yes  
Enclosed: Yes  
Contiguous: Yes  
Permitted: Yes  
Wet space: No  
Addition: No  
Conversion: No

## 6 Floor 2 - Dining Area



Dimensions: 14'8" x 12'5"  
Area: 182 sq. ft  
Counted as living area: Yes

Heated: Yes  
Finished: Yes  
Enclosed: Yes  
Contiguous: Yes  
Permitted: Yes  
Wet space: No  
Addition: No  
Conversion: No

## 7 Floor 2 - Kitchen



Dimensions: 13'10" x 12'5"  
Area: 172 sq. ft  
Counted as living area: Yes

Heated: Yes  
Finished: Yes  
Enclosed: Yes  
Contiguous: Yes  
Permitted: Yes  
Wet space: No  
Addition: No  
Conversion: No

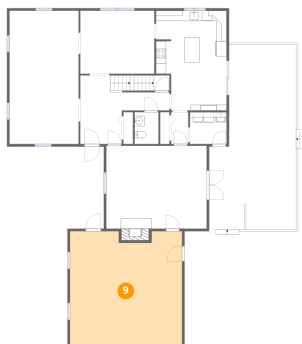
## 8 Floor 2 - Foyer



Dimensions: 8'2" x 6'8"  
Area: 54 sq. ft  
Counted as living area: Yes

Heated: Yes  
Finished: Yes  
Enclosed: Yes  
Contiguous: Yes  
Permitted: Yes  
Wet space: No  
Addition: No  
Conversion: No

## 9 Floor 2 - Garage



Dimensions: 22'2" x 22'6"  
Area: 499 sq. ft  
Counted as living area: No

Heated: No  
Finished: No  
Enclosed: Yes  
Contiguous: Yes  
Permitted: Yes  
Wet space: No  
Addition: No  
Conversion: No

## 10 Floor 2 - Hall



Dimensions: 3'4" x 6'4"  
Area: 21 sq. ft  
Counted as living area: Yes

Heated: Yes  
Finished: Yes  
Enclosed: Yes  
Contiguous: Yes  
Permitted: Yes  
Wet space: No  
Addition: No  
Conversion: No

## 11 Floor 2 - Breakfast Nook



Dimensions: 10'11" x 7'3"  
Area: 79 sq. ft  
Counted as living area: Yes

Heated: Yes  
Finished: Yes  
Enclosed: Yes  
Contiguous: Yes  
Permitted: Yes  
Wet space: No  
Addition: No  
Conversion: No

## 12 Floor 2 - Hall



Dimensions: 17'7" x 6'11"  
Area: 122 sq. ft  
Counted as living area: Yes

Heated: Yes  
Finished: Yes  
Enclosed: Yes  
Contiguous: Yes  
Permitted: Yes  
Wet space: No  
Addition: No  
Conversion: No

## 13 Floor 2 - Bath



Dimensions: 4'9" x 6'4"  
Area: 30 sq. ft  
Counted as living area: Yes

Heated: Yes  
Finished: Yes  
Enclosed: Yes  
Contiguous: Yes  
Permitted: Yes  
Wet space: Yes  
Addition: No  
Conversion: No

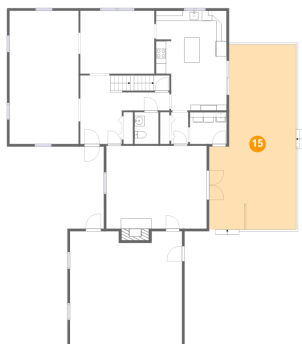
## 14 Floor 2 - Laundry



Dimensions: 7'3" x 6'4"  
Area: 46 sq. ft  
Counted as living area: Yes

Heated: Yes  
Finished: Yes  
Enclosed: Yes  
Contiguous: Yes  
Permitted: Yes  
Wet space: No  
Addition: No  
Conversion: No

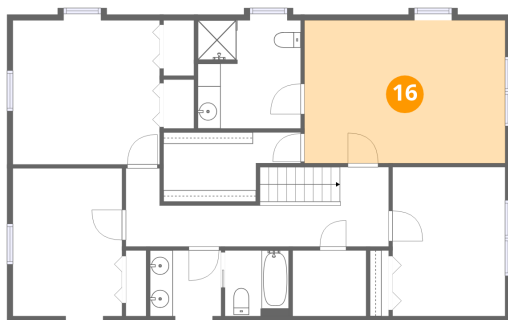
### 15 Floor 2 - Deck



Dimensions: 17'2" x 36'6"  
Area: 627 sq. ft  
Counted as living area: No

Heated: No  
Finished: No  
Enclosed: No  
Contiguous: Yes  
Permitted: Yes  
Wet space: No  
Addition: No  
Conversion: No

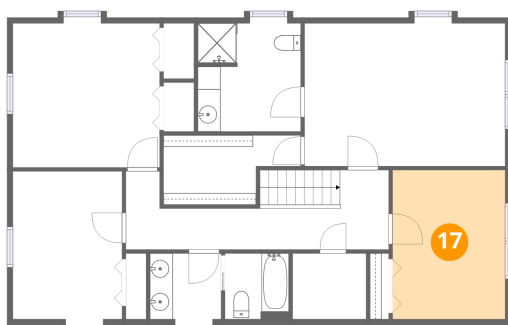
### 16 Floor 3 - Primary Bedroom



Dimensions: 17'6" x 12'5"  
Area: 217 sq. ft  
Counted as living area: Yes

Heated: Yes  
Finished: Yes  
Enclosed: Yes  
Contiguous: Yes  
Permitted: Yes  
Wet space: No  
Addition: No  
Conversion: No

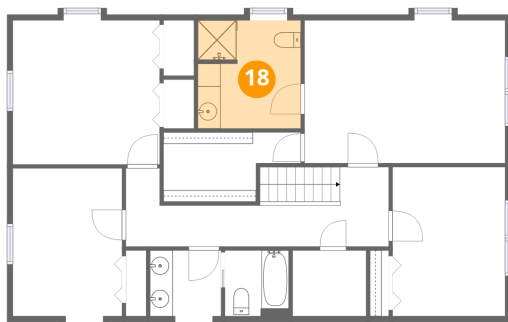
### 17 Floor 3 - Bedroom



Dimensions: 9'10" x 13'0"  
Area: 127 sq. ft  
Counted as living area: Yes

Heated: Yes  
Finished: Yes  
Enclosed: Yes  
Contiguous: Yes  
Permitted: Yes  
Wet space: No  
Addition: No  
Conversion: No

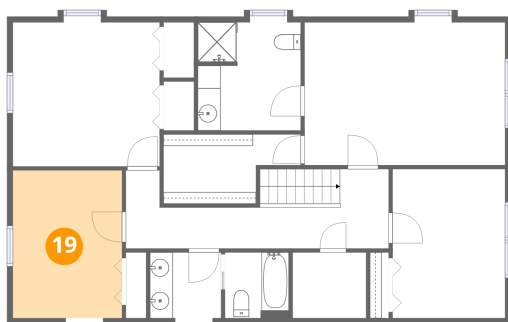
**18** Floor 3 - Bath



Dimensions: 8'11" x 9'5"  
Area: 84 sq. ft  
Counted as living area: Yes

Heated: Yes  
Finished: Yes  
Enclosed: Yes  
Contiguous: Yes  
Permitted: Yes  
Wet space: Yes  
Addition: No  
Conversion: No

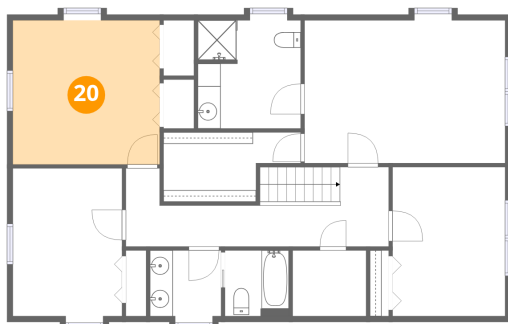
**19** Floor 3 - Bedroom



Dimensions: 9'6" x 12'10"  
Area: 122 sq. ft  
Counted as living area: Yes

Heated: Yes  
Finished: Yes  
Enclosed: Yes  
Contiguous: Yes  
Permitted: Yes  
Wet space: No  
Addition: No  
Conversion: No

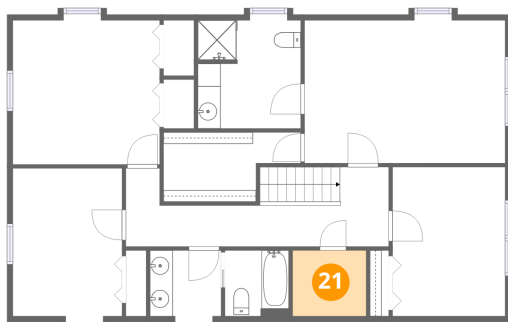
**20** Floor 3 - Bedroom



Dimensions: 12'9" x 12'6"  
Area: 159 sq. ft  
Counted as living area: Yes

Heated: Yes  
Finished: Yes  
Enclosed: Yes  
Contiguous: Yes  
Permitted: Yes  
Wet space: No  
Addition: No  
Conversion: No

**21** Floor 3 - W.I.C.



Dimensions: 6'5" x 5'9"  
Area: 37 sq. ft  
Counted as living area: Yes

Heated: Yes  
Finished: Yes  
Enclosed: Yes  
Contiguous: Yes  
Permitted: Yes  
Wet space: No  
Addition: No  
Conversion: No

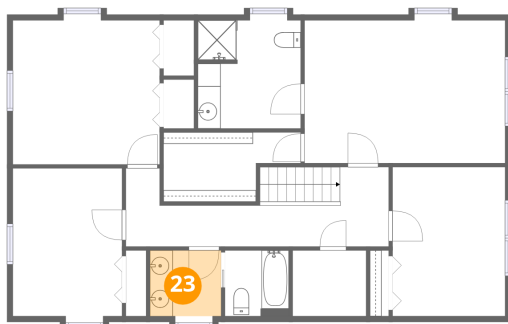
**22** Floor 3 - Hall



Dimensions: 22'11" x 6'11"  
Area: 158 sq. ft  
Counted as living area: Yes

Heated: Yes  
Finished: Yes  
Enclosed: Yes  
Contiguous: Yes  
Permitted: Yes  
Wet space: No  
Addition: No  
Conversion: No

**23** Floor 3 - Bath



Dimensions: 6'2" x 5'9"  
Area: 35 sq. ft  
Counted as living area: Yes

Heated: Yes  
Finished: Yes  
Enclosed: Yes  
Contiguous: Yes  
Permitted: Yes  
Wet space: Yes  
Addition: No  
Conversion: No

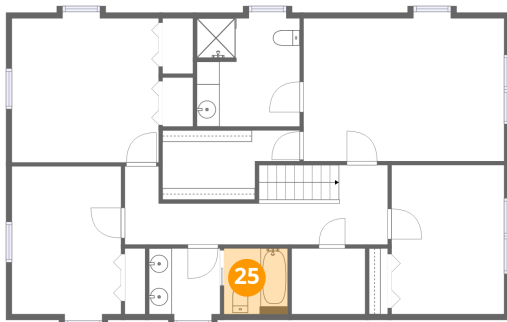
**24** Floor 3 - W.I.C.



Dimensions: 11'11" x 6'0"  
Area: 72 sq. ft  
Counted as living area: Yes

Heated: Yes  
Finished: Yes  
Enclosed: Yes  
Contiguous: Yes  
Permitted: Yes  
Wet space: No  
Addition: No  
Conversion: No

**25** Floor 3 - Bath



Dimensions: 5'7" x 5'9"  
Area: 32 sq. ft  
Counted as living area: Yes

Heated: Yes  
Finished: Yes  
Enclosed: Yes  
Contiguous: Yes  
Permitted: Yes  
Wet space: Yes  
Addition: No  
Conversion: No