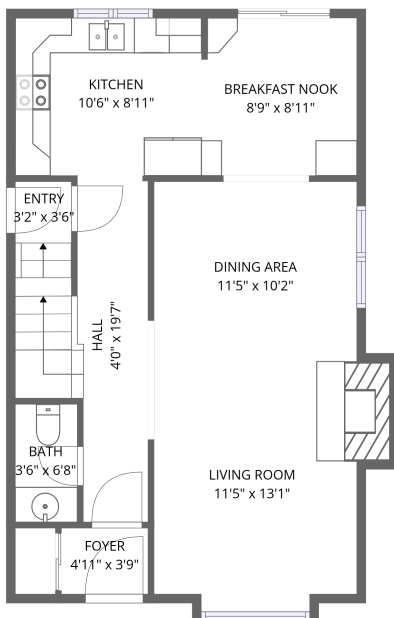
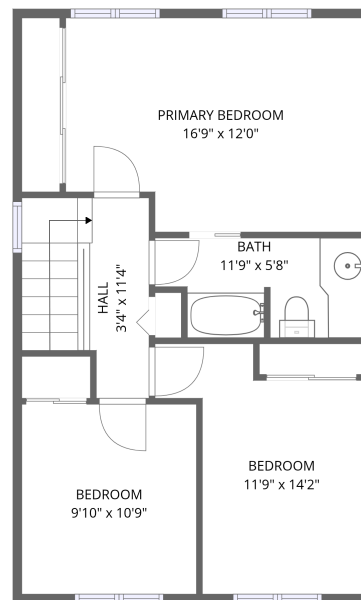


Basement



1st floor



2nd floor

## Total Area: 1807 sq. ft

Basement: 550 sq. ft, 1st Floor: 630 sq. ft, 2nd Floor: 627 sq. ft

Excluded: Embedded window 7 sq. ft, Fireplace 12 sq. ft, Walls: 153 sq. ft

## Property summary



3 Floors



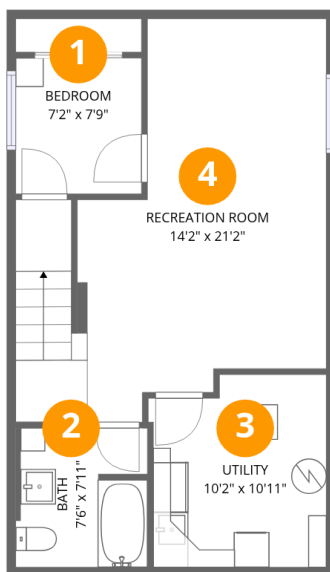
4 Bedrooms



2 Bathrooms



1 Half baths

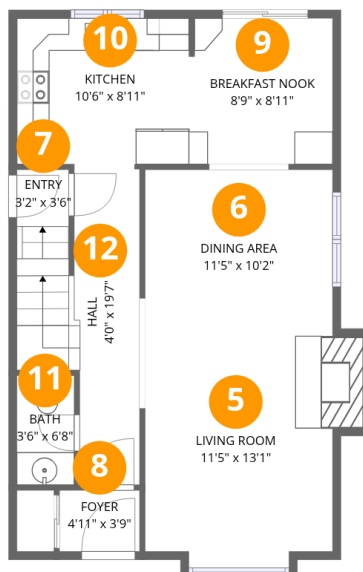


## Room dimensions

Floor 1 Below grade

Total:550sqft Excluded: 0sqft

#		Dimensions	sqft	Counted as living area
1	Bedroom	7'2" x 7'9"	55 sq. ft	Yes
2	Bath	7'6" x 7'11"	58 sq. ft	Yes
3	Utility	10'2" x 10'11"	103 sq. ft	Yes
4	Recreation Room	14'2" x 21'2"	299 sq. ft	Yes

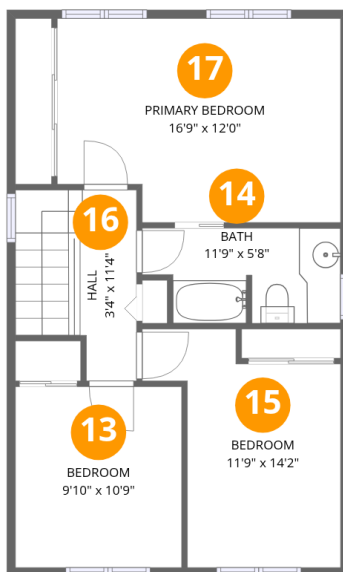


## Room dimensions

Floor 2

Total:630sqft Excluded: 19sqft

#		Dimensions	sqft	Counted as living area
5	Living Room	11'5" x 13'1"	160 sq. ft	Yes
6	Dining Area	11'5" x 10'2"	117 sq. ft	Yes
7	Entry	3'2" x 3'6"	20 sq. ft	Yes
8	Foyer	4'11" x 3'9"	18 sq. ft	Yes
9	Breakfast Nook	8'9" x 8'11"	77 sq. ft	Yes
10	Kitchen	10'6" x 8'11"	94 sq. ft	Yes
11	Bath	3'6" x 6'8"	23 sq. ft	Yes
12	Hall	4'0" x 19'7"	96 sq. ft	Yes



## Room dimensions

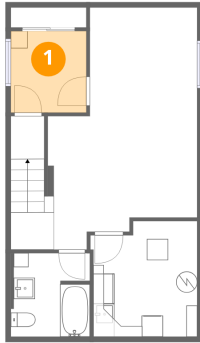
Floor 3

Total:627sqft Excluded: 0sqft

#		Dimensions	sqft	Counted as living area
13	Bedroom	9'10" x 10'9"	106 sq. ft	Yes
14	Bath	11'9" x 5'8"	60 sq. ft	Yes
15	Bedroom	11'9" x 14'2"	124 sq. ft	Yes
16	Hall	3'4" x 11'4"	70 sq. ft	Yes
17	Primary Bedroom	16'9" x 12'0"	192 sq. ft	Yes



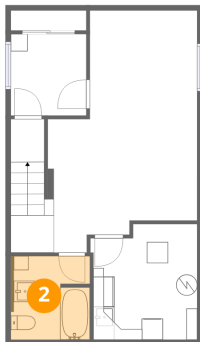
## 1 Floor 1 - Bedroom



Dimensions: 7'2" x 7'9"  
Area: 55 sq. ft  
Counted as living area: Yes

Heated: Yes  
Finished: Yes  
Enclosed: Yes  
Contiguous: Yes  
Permitted: Yes  
Wet space: No  
Addition: No  
Conversion: No

## 2 Floor 1 - Bath

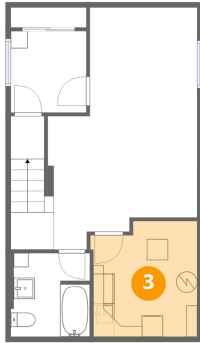


Dimensions: 7'6" x 7'11"  
Area: 58 sq. ft  
Counted as living area: Yes

Heated: Yes  
Finished: Yes  
Enclosed: Yes  
Contiguous: Yes  
Permitted: Yes  
Wet space: Yes  
Addition: No  
Conversion: No



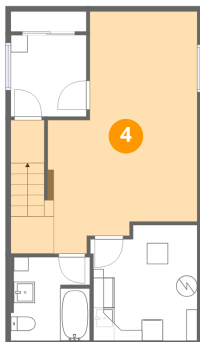
### 3 Floor 1 - Utility



Dimensions: 10'2" x 10'11"  
Area: 103 sq. ft  
Counted as living area: Yes

Heated: Yes  
Finished: Yes  
Enclosed: Yes  
Contiguous: Yes  
Permitted: Yes  
Wet space: No  
Addition: No  
Conversion: No

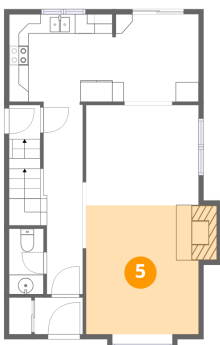
### 4 Floor 1 - Recreation Room



Dimensions: 14'2" x 21'2"  
Area: 299 sq. ft  
Counted as living area: Yes

Heated: Yes  
Finished: Yes  
Enclosed: Yes  
Contiguous: Yes  
Permitted: Yes  
Wet space: No  
Addition: No  
Conversion: No

### 5 Floor 2 - Living Room

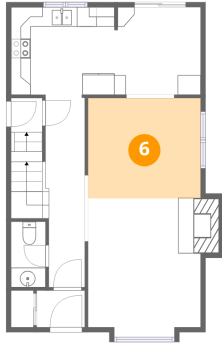


Dimensions: 11'5" x 13'1"  
Area: 160 sq. ft  
Counted as living area: Yes

Heated: Yes  
Finished: Yes  
Enclosed: Yes  
Contiguous: Yes  
Permitted: Yes  
Wet space: No  
Addition: No  
Conversion: No



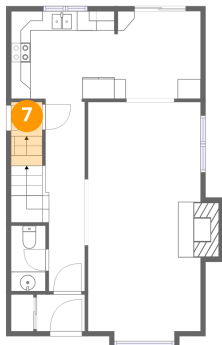
## 6 Floor 2 - Dining Area



Dimensions: 11'5" x 10'2"  
Area: 117 sq. ft  
Counted as living area: Yes

Heated: Yes  
Finished: Yes  
Enclosed: Yes  
Contiguous: Yes  
Permitted: Yes  
Wet space: No  
Addition: No  
Conversion: No

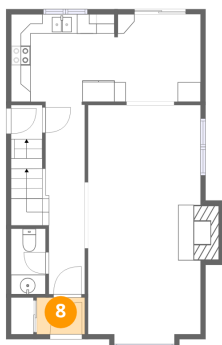
## 7 Floor 2 - Entry



Dimensions: 3'2" x 3'6"  
Area: 20 sq. ft  
Counted as living area: Yes

Heated: Yes  
Finished: Yes  
Enclosed: Yes  
Contiguous: Yes  
Permitted: Yes  
Wet space: No  
Addition: No  
Conversion: No

## 8 Floor 2 - Foyer

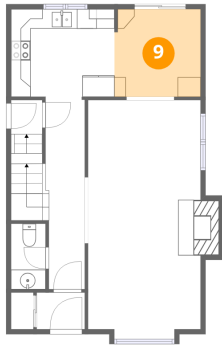


Dimensions: 4'11" x 3'9"  
Area: 18 sq. ft  
Counted as living area: Yes

Heated: Yes  
Finished: Yes  
Enclosed: Yes  
Contiguous: Yes  
Permitted: Yes  
Wet space: No  
Addition: No  
Conversion: No



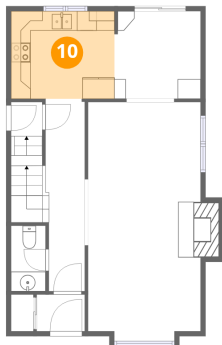
## 9 Floor 2 - Breakfast Nook



Dimensions: 8'9" x 8'11"  
Area: 77 sq. ft  
Counted as living area: Yes

Heated: Yes  
Finished: Yes  
Enclosed: Yes  
Contiguous: Yes  
Permitted: Yes  
Wet space: No  
Addition: No  
Conversion: No

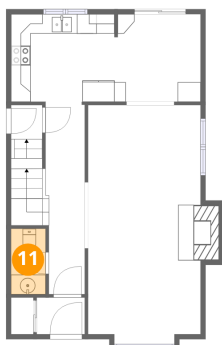
## 10 Floor 2 - Kitchen



Dimensions: 10'6" x 8'11"  
Area: 94 sq. ft  
Counted as living area: Yes

Heated: Yes  
Finished: Yes  
Enclosed: Yes  
Contiguous: Yes  
Permitted: Yes  
Wet space: No  
Addition: No  
Conversion: No

## 11 Floor 2 - Bath

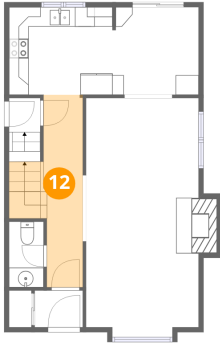


Dimensions: 3'6" x 6'8"  
Area: 23 sq. ft  
Counted as living area: Yes

Heated: Yes  
Finished: Yes  
Enclosed: Yes  
Contiguous: Yes  
Permitted: Yes  
Wet space: Yes  
Addition: No  
Conversion: No



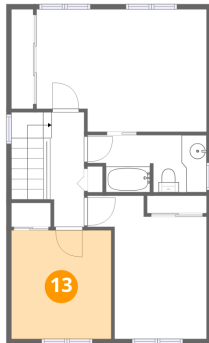
**12** Floor 2 - Hall



Dimensions: 4'0" x 19'7"  
Area: 96 sq. ft  
Counted as living area: Yes

Heated: Yes  
Finished: Yes  
Enclosed: Yes  
Contiguous: Yes  
Permitted: Yes  
Wet space: No  
Addition: No  
Conversion: No

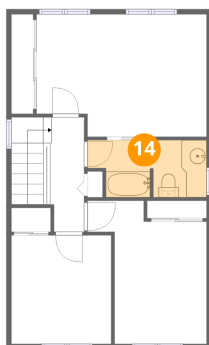
**13** Floor 3 - Bedroom



Dimensions: 9'10" x 10'9"  
Area: 106 sq. ft  
Counted as living area: Yes

Heated: Yes  
Finished: Yes  
Enclosed: Yes  
Contiguous: Yes  
Permitted: Yes  
Wet space: No  
Addition: No  
Conversion: No

**14** Floor 3 - Bath

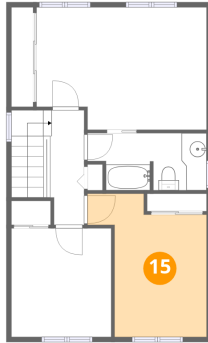


Dimensions: 11'9" x 5'8"  
Area: 60 sq. ft  
Counted as living area: Yes

Heated: Yes  
Finished: Yes  
Enclosed: Yes  
Contiguous: Yes  
Permitted: Yes  
Wet space: Yes  
Addition: No  
Conversion: No



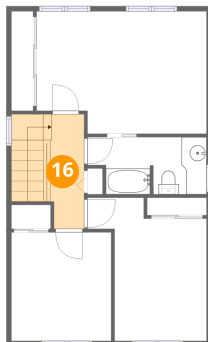
### 15 Floor 3 - Bedroom



Dimensions: 11'9" x 14'2"  
Area: 124 sq. ft  
Counted as living area: Yes

Heated: Yes  
Finished: Yes  
Enclosed: Yes  
Contiguous: Yes  
Permitted: Yes  
Wet space: No  
Addition: No  
Conversion: No

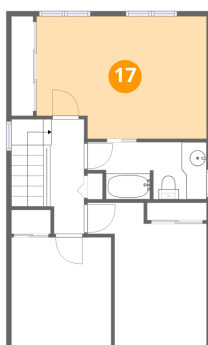
### 16 Floor 3 - Hall



Dimensions: 3'4" x 11'4"  
Area: 70 sq. ft  
Counted as living area: Yes

Heated: Yes  
Finished: Yes  
Enclosed: Yes  
Contiguous: Yes  
Permitted: Yes  
Wet space: No  
Addition: No  
Conversion: No

### 17 Floor 3 - Primary Bedroom



Dimensions: 16'9" x 12'0"  
Area: 192 sq. ft  
Counted as living area: Yes

Heated: Yes  
Finished: Yes  
Enclosed: Yes  
Contiguous: Yes  
Permitted: Yes  
Wet space: No  
Addition: No  
Conversion: No